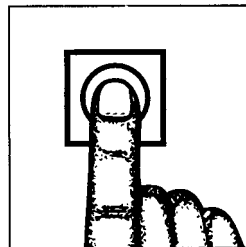
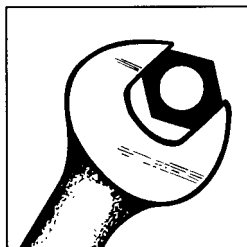




E6414 and E6128 Potato Peeler.

INSTALLATION
INSTALLATION
INSTALLATION

OPERATION
FONCTIONNEMENT
BETRIEB



INSTALLATION AND OPERATION MANUAL.

PLE200505 A- 12-09



PLEASE KEEP THIS MANUAL IN A SAFE PLACE FOR FUTURE REFERENCE

English / CONTENTS.

	Section	Page
Safety information	1	3
Safety guidelines	1.1	3
Warning symbols	1.2	4
Liability	1.3	4
Definitions	1.4	4
Environmental responsibility	1.5	4
RoHS compliance	1.5.1	4
WEEE directive	1.5.2	5
Packaging recycling	1.5.3	5
Foreword	2	5
General information	3	5
Features and benefits	4	5
Safety instructions	5	6
Never	5.1	6
Always	5.2	6
Operating the peeler	6	7
E6414 component identification	Figure 1	7
E6128 component identification	Figure 2	7
Instructions for use	6.1	8
General care and cleaning	7	9
Cleaning	7.1	9
Technical information.	Table 1	11
E6414 overall dimensions.	Figure 3	12
E6128 overall dimensions.	Figure 4	13
Installation	8	13
Unpacking and handling	8.1	13
Location	8.2	14
Water supply quality	8.3	14
Water connection requirements	8.4	14
Water supply hose connection	Figure 4	15
Drain connection requirements	8.5	15
Electrical installation	8.6	15
Electrical connection	8.7	16
Commissioning	9	16
Peeler maintenance	10	16
PAT testing	11	17
Fault finding	12	17
Spares and accessories	13	18
Notes		18
Service information and addresses		19

1. SAFETY INFORMATION.

The procedures and precautions contained in this manual are understood to apply to the peeler only when it is used in the prescribed manner.

If the machinery is used other than in the recommended manner, the operator will be responsible for his/her own safety and for the safety of the other persons who may be involved.

The information in this manual has been prepared to assist the operator to understand, maintain, and operate the peeler. In order to prevent accidents, read, understand and follow all the precautions and warnings contained in this manual before installation or operating for the first time. This manual must be studied to obtain a clear understanding of the peeler and its capabilities.

Water and electricity are dangerous and may cause injury if sufficient precautions are not taken prior to operating or servicing the appliance.

Ensure the electrical supply has been isolated and all liquid has been drained before attempting to service the unit.

1.1 SAFETY GUIDELINES.

Ensure sufficient precautions are observed during manually handling of the peeler particularly when moving into position on installation. Reference must be made to manual handling regulations. The weights of the peeler are given in table 1. Refer to section 4 for operating safety instructions.

- Do not hose or pressure clean this appliance. It is vital to adhere to the cleaning instructions detailed in section 7 of this manual.
- Do not remove any covers or loosen any fittings whilst the machine is operating.
- Ensure this manual is kept in an easily accessible place for future reference near the peeler.
- All operators must have had appropriate training in the safe operation of the peeler.
- All operators must be over 16 years of age. Those below 18 years of age must be supervised by a competent person of 18 years or over.
- Ensure the electrical supply has been isolated before attempting to service or move the peeler.
- Rotating machinery and electricity are potentially hazardous and may cause injury if sufficient precautions are not taken prior to operating or servicing the machine.
- Always have your peeler regularly serviced; at least twice a year, depending on frequency of use.
- If a fault occurs with the appliance turn off the power supply to the machine using the on/off switch and isolate the electrical supply using the main switch. Isolate the water supply.

- This appliance is not intended for use by persons (including children) if their physical, sensory or mental capabilities, or lack of experience and knowledge prevent them from using it safely.
- Children should be supervised to ensure that they do not play with the appliance.
- Operators must be over the age of 16 and adequately trained.

1.2 WARNING SYMBOLS.



The "Warning" symbol is found primarily where the corresponding warnings are important for the safe use of the machinery.



This symbol is used when there are risks of an electrical nature (Prior to servicing the machinery, always disconnect the power cable from the mains supply)

This equipment should only be transported and stored in an environment with an ambient temperature above 5°C and not exceeding 55°C.

1.3 LIABILITY.

Installations and repairs which are not carried out by **Authorised technicians** or the use of other than original spare parts, and any **technical alterations** to the machine, **may affect the warranty set out in the standard conditions of sale.**

1.4 DEFINITIONS.

Qualified operators. The Peeler is only intended for professional use by qualified operators. Qualified operators are those personnel who have received training in the operation of the appliance from a suitable qualified person and have carefully read the information in this manual and are familiar with the equipment's function or had previous experience with the operation of peelers.

Qualified installation personnel. Any 'work' performed on the peeler including installation and servicing must be by personnel who are experienced and familiar with precautions required, have complied with all requirements of state and local authorities having jurisdiction. In the EU installation must comply with national or local requirements of the country of destination of the appliance.

Qualified Service Personnel: Those who are familiar with Hobart peelers, competent, trained and approved by Hobart UK. All service personnel are required to be equipped with a complete set of manuals and original service parts.

1.5 ENVIRONMENTAL RESPONSIBILITY.

1.5.1 RoHS COMPLIANCE.

This peeler product complies with the requirements of the RoHS directive (2002/95/EC) that came into force on 1 July 2006.

The RoHS Directive stands for "the restriction of the use of certain hazardous substances in electrical and electronic equipment". This Directive bans the placing on the EU market of new electrical and electronic equipment containing more than agreed levels of lead,



cadmium, mercury, hexavalent chromium, polybrominated biphenyl (PBB) and polybrominated diphenyl ether (PBDE) flame retardants.

1.5.2 WEEE DIRECTIVE.

The aim of the Waste Electrical and Electronic Equipment Directive (WEEE Directive 2002/96/EC) is to minimise the impact of electrical and electronic goods on the environment, by increasing re-use and recycling and reducing the amount of WEEE going to landfill.

The WEEE directive became effective on 1st July 2007.

If this peeler is replacing an existing appliance make sure it is disposed of in the correct manner. Contact your local Hobart UK sales office for disposal of your old appliance.

1.5.3 PACKAGING RECYCLING.

Ensure the cardboard carton and wooden pallet is correctly recycled.



2. FORWARD

Hobart reserves the right to alter the design of their products without prior notice. Whilst every effort is made to ensure this publication reflects the latest design, the Company cannot guarantee full compliance.

Take pride in your peeler - keep it clean and in good mechanical and electrical condition

3. GENERAL INFORMATION

The information and instructions contained in this manual may not cover all details or variations in the equipment, nor provide for every eventuality to arise with installation, operation, or maintenance. If additional information is required please contact your local Hobart office.

The Hobart peeler range, are designed to peel potatoes but may be used with other root vegetables. The peelers are designed as bench or 'stand' mounted machines. They are manufactured from a cast aluminium alloy housing and carburundum abrasive disk and hopper lining (E6128 only). The peeler is painted with a metallic steel grey finish. The standard machine is rated to operate on a nominal 230 volts/50 Hz/single phase, or 400 volts/50 Hz/3 phase supply, and is fitted with a no volt release safety feature to prevent automatic restarting after a supply failure/disconnection from the mains. The single-phase motors are fitted with an auto-resetting thermal cut out. Potatoes are introduced into the top hopper opening and discharged through the hinged door once complete. A water supply is required to flush away peeling debris via a suitable drain outlet. The E6128 peeler incorporates a removable peel trap.

4. FEATURES AND BENEFITS.

- Profiled funnel shape to the hopper lid ensures easy loading of the peeler.
- Both models are available for either a single or 3 phase electrical supply.
- Powerful motor to provide maximum performance.
- Simple and easy to use controls.
- Robust cast aluminium alloy housing.
- Heavy-duty carbarundum abrasive disk ensures optimum peeling.
- Smooth easy to clean internal hopper surfaces.
- 'Bull nose' on the door ensures effective turning of the vegetables.
- Built in peel trap for the E6128 appliance.
- Two peel trap options available for the E6414.
- Optional extension legs available for the E6128 peeler.

- Stainless steel tubular stand available for the E6414 peeler.
- Both models can be used to peel other root vegetables.
- Peelers feature an AB air gap to ensure WRAS approval.

5. **SAFETY INSTRUCTIONS**

A FULLY TRAINED AND COMPETENT PERSON MUST ONLY USE THE PEELER.

The following instructions must be observed when using the peeler.

Note: The peeler must only be used for the purpose it was design and inline with the supplied operating instructions.



5.1 **NEVER**

- Operate the peeler if a fault develops or if it is unsafe.
- Wear loose clothing.
- Overload the peeler. Refer to table 1 for the maximum capacity of the machine.
- Attempt to reach inside the appliance when peeling.
- Access rotating parts.
- Leave the machine running after use.
- Use excessive force when operating which could affect the stability of the peeler.
- Operate the peeler if parts are disassembled.
- Over ride the safety switches fitted to the machine.
- Use the peeler in an unsafe condition.
- Clean the machine with scouring powder or a scouring pad.
- Make any adjustments to the peeler whilst it is operating.

5.2 **ALWAYS**

- Use the peeler in a well-lit area.
- Use the correct manual handling techniques.
- Ensure waste material is properly managed and not allowed to build up.
- Turn off if the machine stop unexpectedly and remove the obstruction.
- Ensure the rubber lid, hopper and door are correctly fitted to the peeler.
- Disconnect the mains electricity supply before cleaning the appliance.
- Clean the peeler daily.
- Use the stop button to stop machine.
- Remove any stones or hard objects before peeling.
- Clean the abrasive disk, peel trap and hopper after use.
- Clean the peeler using mild soap and water and rinse well afterwards.
- Report any machine faults to your supervisor.
- Service the peeler and attachments at least twice a year depending on the frequency of use.
- Use the peeler as intended and inline with the operating instructions.
- Immobilise the peeler to prevent unauthorised use when left unattended.

The machine should only be used for the design purposes and inline with the supplied operating instructions

6. OPERATING THE PEELER.



This potato peeler is only for professional use by suitably trained persons. Ensure operators have read and understood this manual and have received adequate training.

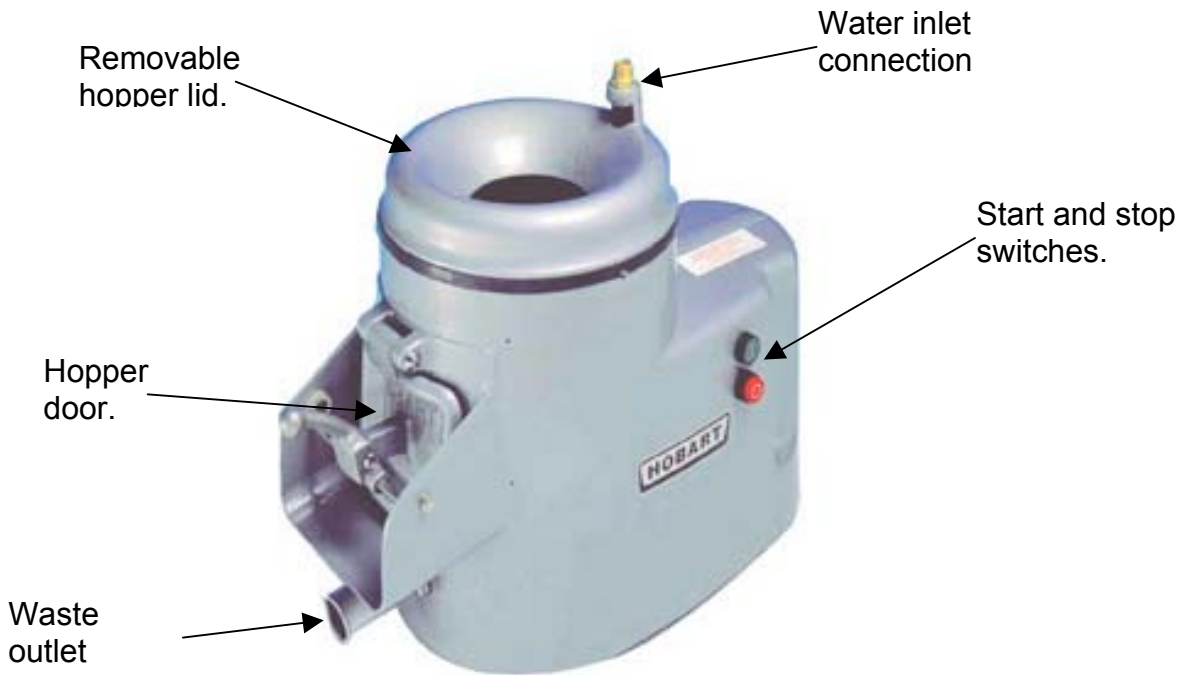


FIGURE 1. E6414 COMPONENT IDENTIFICATION.



FIGURE 2. E6128 COMPONENT IDENTIFICATION.

6.1 INSTRUCTIONS FOR USE.

1. Remove the rubber splash protector lid.



2. Ensure the abrasive disk is in position. If not remove the hopper lid (E6414) or hopper assembly (E6128) and align the slot in the disk with the drive shaft.

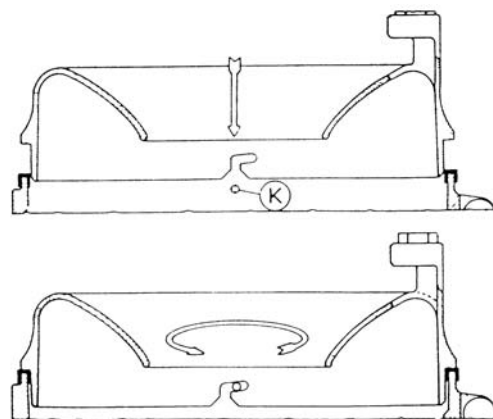


E6414 under side of the abrasive disk showing the drive slot.



E6128 under side of the abrasive disk showing the drive slot.

3. Re-fit the hopper lid (E6414) by aligning the bayonet pin and slot and turning the lid anti-clockwise.



- Lift the hopper assembly (E6128) onto the base and secure in place using the clamp handles. Use extreme caution and observe manual handling guidelines when lifting the hopper.

Hopper assembly.

Clamp handle.



- Check the hinged outlet door is tightly closed shut.



- Fill the hopper with the correct weight of potatoes.
- Replace the rubber splash protector lid.
- Switch on the electricity supply.
- Turn on the water supply and adjust to approximately 1 litre per minute.
- Press the green 'ON/I' switch and allow the potatoes to be peeled. This may take up to 4 minutes depending on the type and size of potato. If the machine stalls or stops during peeling press the 'OFF/O' switch at once and remove the obstruction or some of the potatoes to reduce the load. This must only be done with the machine switched off.
- Switch off the peeler by pressing the red 'off/O' switch.
- Remove the rubber lid and check the potatoes are correctly peeled.
- Re-start the machine and slowly open the door to allow the potatoes to discharge into a suitable container placed under the outlet.
- Switch off the peeler and isolate the water supply.

7. GENERAL CARE AND CLEANING

7.1 CLEANING.

Before cleaning disconnect the electrical supply by using the isolating switch or remove the supply plug from the socket. For safety do not rely on the stop switch fitted to the machine.

The outside of the peeler should be cleaned daily with a soft damp cloth and hot soapy water.

Abrasive materials should not be used.

To ensure a long working life from your peeler, have it serviced regularly - **DO NOT WAIT UNTIL IT STOPS WORKING!** The interval between service visits will depend on usage.

DO NOT HOSE OR PRESSURE CLEAN THIS APPLIANCE.

- Ensure the hopper door is closed.
- Turn on the water supply and adjust to approximately 5 litre per minute.
- Operate the peeler for approximately 2 minutes to flush out waste peelings.
- Stop the machine and isolate the electricity supply.
- Remove the rubber lid, the hopper lid (E6414) by turning clockwise and lifting, and the abrasive disk.
- Wash in hot soapy water using a stiff scrubbing brush.
- Wash the inside of the hopper using hot soapy water and a stiff scrubbing brush, rinse with warm water.
- Re-assembly the abrasive disk, hopper lid and rubber lid.
- Check that everything has been replaced correctly and the peeler is safe to leave for the next use.

Table 1. Technical information.

Description	Units	E6414	E6128
Electrical information.			
Motor power single phase	kW/(hp)	0.250/(1/3)	0.370/ (1/2)
Motor power three phase	kW/(hp)	0.180/(1/4)	0.370/ (1/2)
Capacity (potatoes)	Kg (Lbs)	6.35 (14)	12.70 (28)
Speed of abrasive disc (50Hz)	rpm	375	230
Speed of abrasive disc (60Hz)	rpm	450	278
Nominal electrical supply	1ph Volts/Hz	230/50	230/50 115/60
Nominal electrical supply	3 ph Volts/Hz	400/50	400/50 440/60
Full load current at above voltage	1 ph Amps	230v/50Hz = 3.5 115v/60Hz= 6.8	230V= 4.7 115V= 8.0
Full load current at above voltage	3 ph Amps	400v/50Hz= 0.8 230v/50 Hz= 1.3	400V= 1.3 440V= 1.5
Recommended fuse size 230v/1 ph/50hz	amps	13 amps	13 amps
Recommended fuse size 230v/1 ph/60hz	amps	16 amps	16 amps
Recommended fuse size 400v/3 ph/50hz	amps	6 amps	6 amps
Recommended fuse size 440v/3 ph/60hz	amps	6 amps	6 amps
Class of appliance		Class I	Class I
Enclosure IP rating		IP33	IP33
Wiring conductor size; single phase/3 phase	mm ²	1.5/1.0	1.5/1.0
Installation information.			
Minimum and maximum ambient temperature	°C	+5 to +40	+5 to +40
Minimum and maximum water inlet temperature	°C	+5 to +25	+5 to +25
Drain connection size (recommended)	mm	40*	50 (2" BSP)
Water inlet pressure	Bar g	0.2 to 10	0.2 to 10
Recommended securing bolt size	mm	M6 (4 off)	M10 (3 off)
Length of external water inlet hose	mm	1500	1500
Nominal water flow rate	Litres/minute	Peeling 0.5-1 Flushing 5.0	Peeling 0.5-1 Flushing 5.0
Water inlet hose connection size		13 mm	13 mm
Drain capacity (minimum)	Litres/minute	5.0	5.0
Peeler weight including strainer (empty)	Kg (Lbs)		
Noise level	dB (A)	less than 70	less than 70
Shipping information.			
Operating weight (not including potatoes)	kg (Lbs)	37	82
Shipping weight	kg (Lbs)	43	93
Shipping dimensions (carton)	LxWxH cm	77 x 44 x 55	75 x 63 x 116
Shipping volume	M ³	0.186	0.548
Storage conditions. Temperature and humidity.	°C, % RH	+5 to +38, 85	+5 to +38, 85

* Outlet spout to suit 45mm bore rubber hose if required.

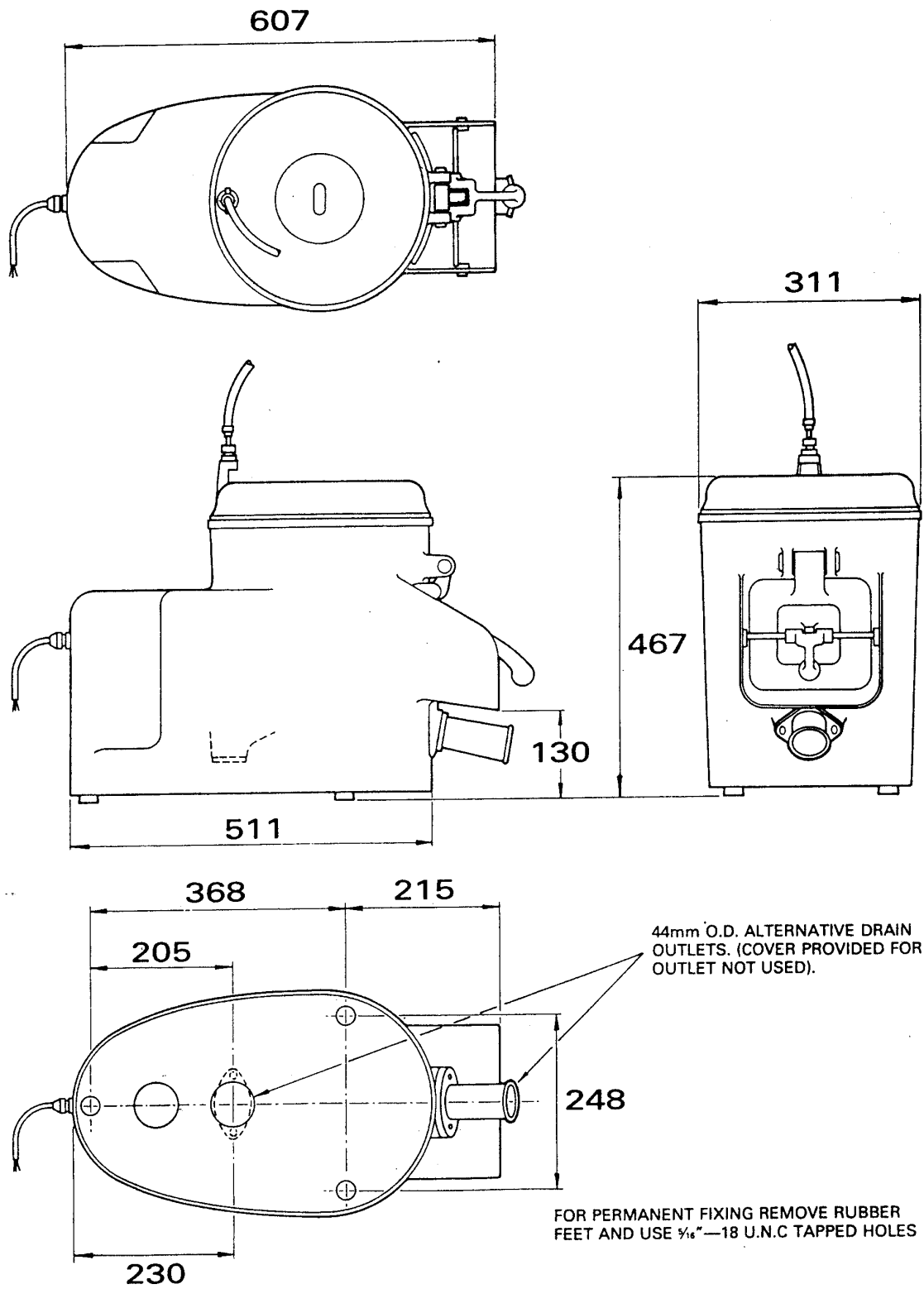


FIGURE 3. 6414 OVERALL DIMENSIONS.

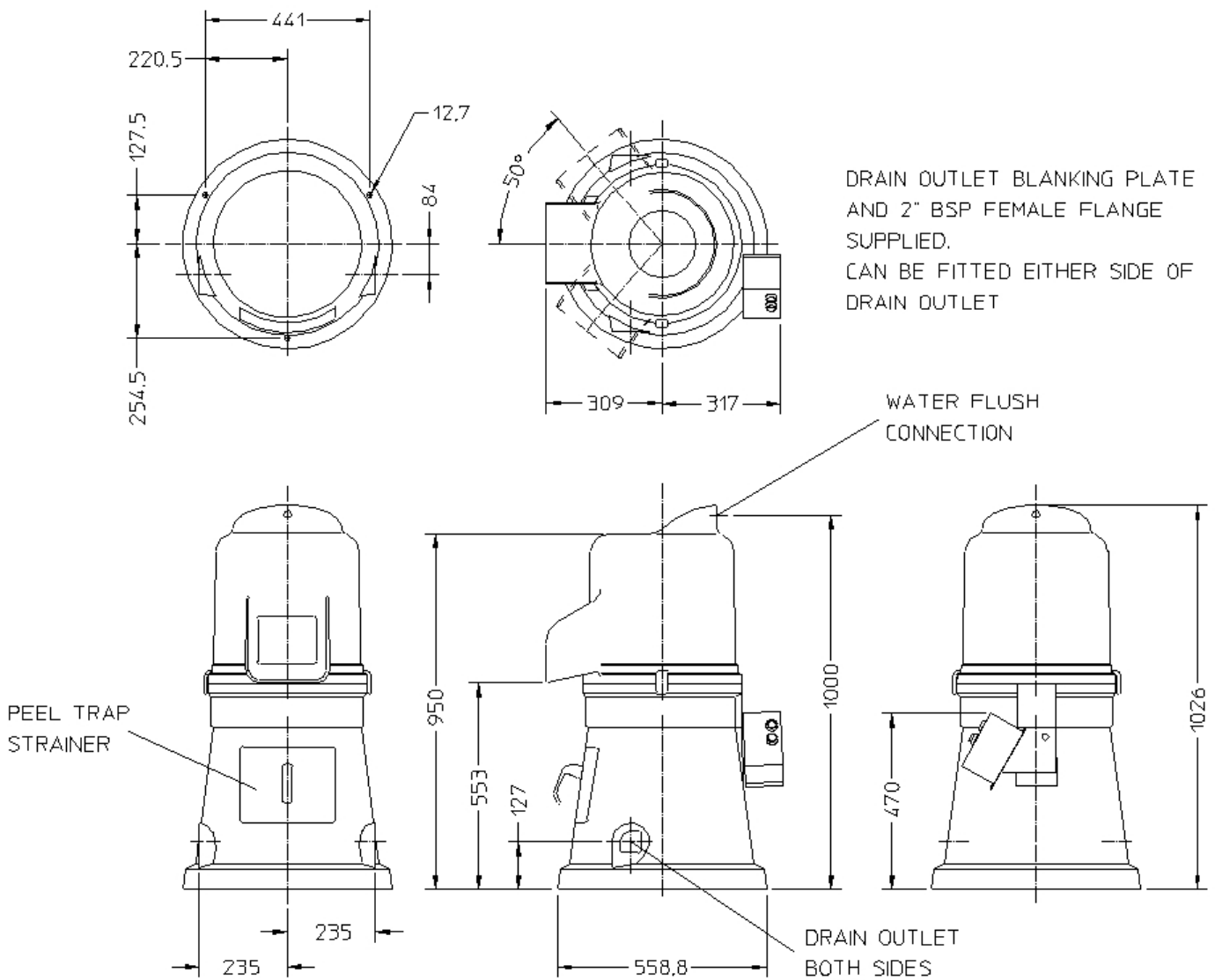


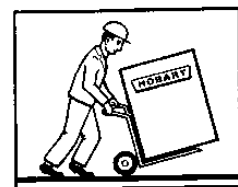
FIGURE 4. 6128 OVERALL DIMENSIONS.

8 INSTALLATION

A qualified person must install this machine in accordance with current regulations.

8.1 UNPACKING AND HANDLING.

Where ever possible the peeler should be transported to the installation position in the packaging provided to avoid damage. Do not use a sharp knife to cut into the box as damage to the machine may occur. Check for possible shipping damage. If the unit is found to be damaged, save the packaging material and contact your nearest Hobart sales office.



Caution: The peeler is a heavy object and must be correctly handled and lifted to avoid personal injury.

With the machine in the vicinity of its final position remove from the transportation pallet following the instructions provided with the packaging. The machine is affixed to the pallet by three retaining bolts through the pallet into the threaded feet. Care must be taken during this operation to ensure: -

- All required safety measures are taken to ensure correct lifting and handling to avoid risk of injury, through dropping, falling or tilting.
- No damage to the machine which could impair the normal operation

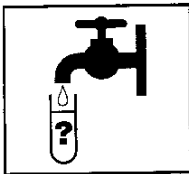
8.2 LOCATION.

The peeler is not suitable for outdoor installation and must not be installed where a water jet could be used for cleaning. The peeler must only be operated by trained staff and must be installed in an area where the use and maintenance is restricted to trained personnel.

Select a suitable flat level surface that can support the weight of the peeler and contents when full (refer to table 1 for weights and dimensions). In areas where stability may be an issue, the machine should be secured in position. A fabricated stainless steel stand is available for the E6414 peeler model. Refer to the spare parts listed in section 13.

Ensure there is sufficient space around the peeler to enable safe operation. Servicing may be more difficult because of reduced clearances and you should always check that equipment specifications permit the close proximity of other equipment. Service access is required to the underside of the peeler.

8.3 WATER SUPPLY QUALITY.



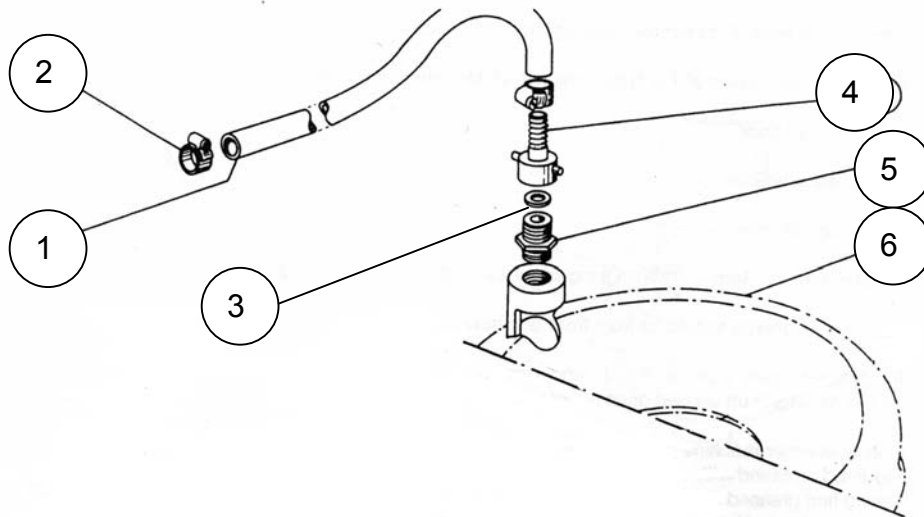
The installation must conform to the requirements of the local water authority and be carried out by an authorised technician. The water supply pressure must be between **0.2 and 10 bar** when supplying a minimum flow rate of 5 litres/minute (during flushing) and at an inlet temperature between **5 and 25°C**.

If a water filter is installed in the supply to the peeler ensure there is adequate water pressure available at the required flow rate. Some water filters require a minimum pressure in excess of 2-bar g (30-psi g). Table 1 details the water supply requirements to the appliance.

8.4 WATER CONNECTION REQUIREMENTS.



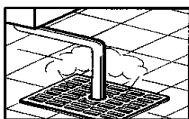
A manual shut off valve must be installed in the water supply line in an accessible position adjacent to the boiler and must terminate with a 3/4" BSP male fitting (G3/4A to ISO7/1). Care must be taken to ensure the flexible water supply hose supplied with the peeler is correctly routed and not crushed when the appliance is moved into position. If the hose is routed through the counter or tabling all sharp edges and burrs must be removed and a suitable grommet fitted. Ensure there is free length of hose to enable the peeler to be withdrawn if necessary for servicing. Before connecting the peeler, the water supply line must be checked to ensure it is free from any foreign matter and flushed out if necessary.



Item	Description	Part number	Quantity
1	Hose	142277	1.5 metres (E6414), 1.8 metres (E6128)
2	Clamp	CL-E-2-10	2
3	Rubber washer	Supplied with item 4	
4	Hose tail fitting	PF-E-11-10	1
5	Connector	Supplied with item 4	
6	Hopper lid	58556-R (E6414) 51780-R (E6128)	1 1

FIGURE 4. WATER SUPPLY HOSE CONNECTION.

8.5 DRAIN CONNECTION REQUIREMENTS.



The E6414 is supplied with a 40mm diameter outlet spout that can be positioned either for a front or bottom discharge. Refer to figure 1 for the connection position. Most installations use the front discharge into a sink or other suitable container. The E6128 peeler must be connected to a suitable 50mm diameter drain outlet. The drain system must be capable of operating with a minimum flow rate of 5 litres/minute.

8.6. ELECTRICAL INSTALLATION.

The electrical installation of the peeler must conform to the local electricity board regulations. When installed in the United Kingdom the installation must be in accordance with the current edition of the IEE Regulations for electrical equipment in buildings and the Electricity at work act.



A competent person must carry out the electrical installation. Ensure that the electrical supply agrees with the machine specification, prior to connection.

The E6414 and E6128 peelers are 'class I' appliances where the protection against electric shock does not rely solely on basic insulation. An external electrical isolator and MCB/fuses (both items supplied by others) must be fitted to the incoming electrical supply to the machine. In addition a 30mA residual current device is strongly recommended to provide extra protection.

8.7 ELECTRICAL CONNECTION.

Refer to the wiring diagram supplied with the peeler and enclosed in the document envelope.

Perform the necessary electrical safety checks on the peeler and record the values. Check the earth continuity is less than 0.1 Ω and the insulation resistance is greater than 1 M Ω .

9. COMMISSIONING.



This potato peeler is only for professional use by suitably trained persons. Ensure operators have read and understood this manual and have received adequate training.

1. Verify the electrical, water and waste connections are all sound and comply with current regulations and Bylaws.
2. Check the electrical isolator is switched off and turn on the water supply. Inspect the water supply connections for leaks.
3. Switch on the electrical supply and press the green 'on' button.
4. Check direction of rotation.
5. Check the operation of unit.

If machine fails to operate, check the following points: -

- The control fuse accessible from the underside of the appliance (E6414 only).
- The main electrical isolator is turned on.
- There is an electrical supply to the peeler.

10. PEELER MAINTENANCE



A HOBART TRAINED AND COMPETENT PERSON SHOULD CARRY OUT SERVICING.

Hobart recommend a complete inspection of the appliance every 1000 hours of operation or every 6 months whichever comes first.



Do not remove any covers or loosen any fittings while the peeler is operating. Ensure the electrical supply has been isolated before attempting to service or move the appliance. The motor and transmission are packed with special lubricant, which will last for several years. When replacement is needed, contact your local service centre.

Spare Parts Manuals (E6414 peeler manual part number: PLE200274, E6128 peeler manual part number: PLE200398) are available on request from Hobart National Parts Distribution Centre.

For continued safe and reliable operation of this peeler, it is recommended that servicing is only carried out by Hobart trained service personnel.

11. PAT TESTING.

To meet the requirements of the 1989 "electricity at work regulations it is recommended to implement a programme of planned inspection and testing of portable appliances. Usually an appliance that is subject to PAT testing is defined as equipment that is connected to the supply via a plug and socket, however it is not a requirement for electrical equipment to be deemed portable or transportable. If equipment is permanently connected to the fixed installation, e.g. by a flex outlet or other accessory, the accessory will need to be detached from its box or enclosure so that the connections can be inspected. Such work should only be carried out by a competent person.

The IEE Code of Practice states, those carrying out the inspection and testing must be competent to undertake the inspection and, where appropriate, testing of electrical equipment and appliances

12. FAULT FINDING

Fault	Inspect/action	Remedy
Machine fails to start	Check fuses	If faulty replace fuses
	Check the main electrical isolator is turned on	Switch on
	Check the RCB is switched on.	Check the trip function and reset
	Machine still fails to operate	Call local service centre

13. SPARES AND ACCESSORIES

Description	E6414	E6128
	Part Number	Part Number
13" extension legs	Not available	52517
15" extension legs	Not available	57910
Abrasive disk	135092	51188
Adhesive for door seal -tube	SU-E-16-10	SU-E-16-10
Ball –black (abrasive disk)	SU-E-9-2	Not applicable
Blanking flange	135013	52200
Cam-door	53042	51697
Clamp plate-hopper	Not applicable	135466
D type Sink Basket	53891	Not available
Door assembly incl. handle, rod and seal	141438	142062
Drive belt	VB-E-2-2	Not applicable
E type Peel Trap	53844	Not available
Foot-rubber	53917	Not applicable
Fuse -2 amp	140869-19	140869-19
Gasket -blanking flange	135777	51298
Hopper clamp handle	Not applicable	136907
Hose connector	PF-E-11-10	PF-E-11-10
Outlet spout/drain outlet	135012	54047
Peel Ejector Unit	Not available	54093
Rubber lid-hopper	51132	144789
Seal-door (610 mm long)	GS-E-2-22	GS-E-2-22
Sealing ring	53722	51211
Spare parts manual	PLE200274	PLE200398
Stand-tubular without castors	M-L36487	Not available
Strainer basket assembly	137548	137548
Stud-abrasive disk	52495	Not applicable
Timer for wall mounting (single phase)	Not available	144602-3
Water supply hose	142277 (1.5 metres)	142277 (1.8 metres)
Wiring diagram (230v/50Hz/1 ph)	141416-1	00-738232
Wiring diagram (400v/50Hz/3 ph)	141416-4	00-738232

NOTES:-

SERVICE CONTACTS

Hobart trained service technicians strategically located at the listed Hobart branches are prepared to give you fast, efficient and reliable service. Protect your investment by having a Hobart inspection contract, which assures the continued, efficient operation of your Hobart machines, spares and accessories.

For further detail contact: -

**SALES, SERVICE AND SPARES:
0844 888 7777**

Continued product improvement is a Hobart policy, specifications may change without notice.



**Hobart UK.
Hobart House,
51 The Bourne,
Southgate,
London
N14 6RT**

**Tel: 0844 888 7777
Fax 0208 886 0450
www.hobartuk.com**

PLE200505 A EU8292