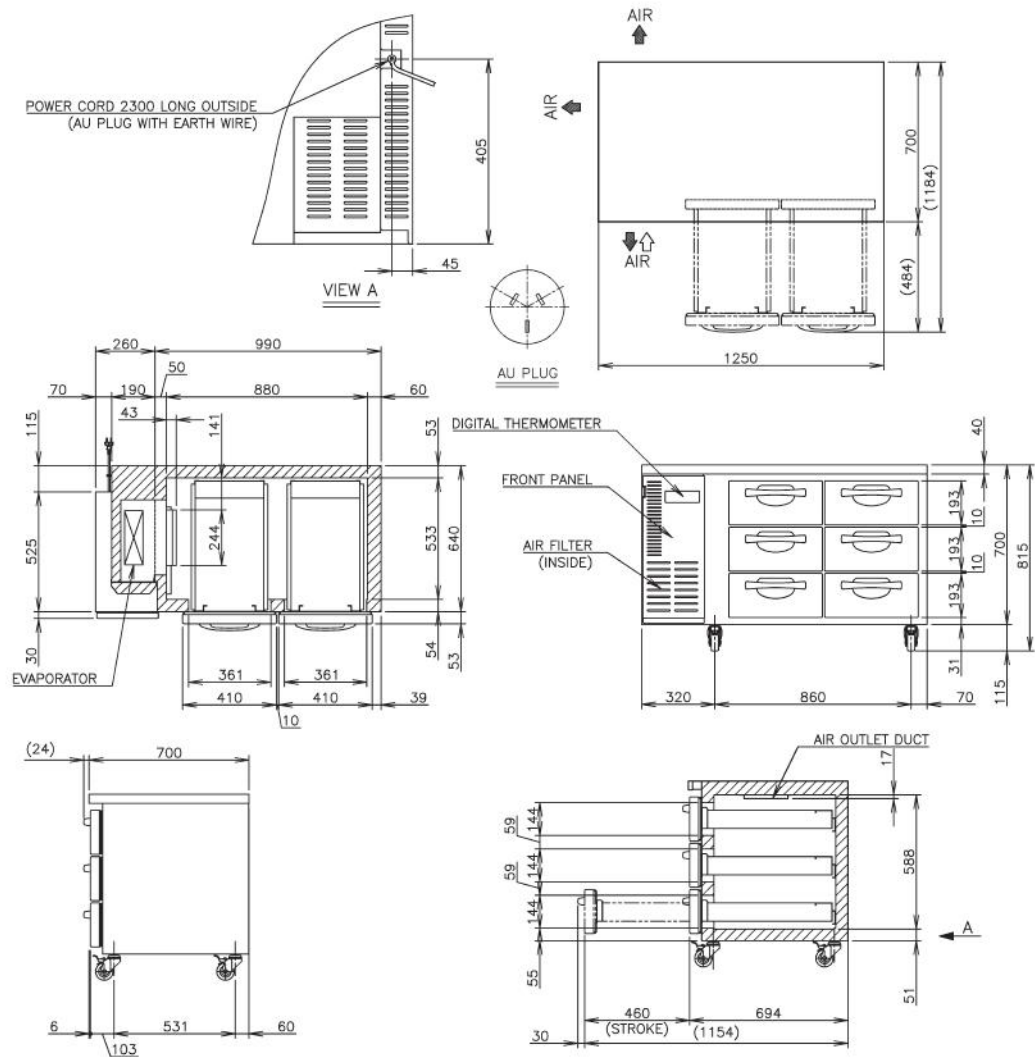




## PRODUCT FEATURES

- Stainless steel interior and exterior.
- Programmable Digital controller and display.
- 6 x Auto closing drawers
- Fits GN pans 100mm Deep
- Compact slide out refrigeration unit for quick maintenance.
- 2 years parts and labour warranty.
- Comes standard with 115mm lockable castors (not legs).
- Optional Adjustable legs 150 - 180mm (Sold separately).

## TECHNICAL DRAWING



## PRODUCT SPECIFICATION



<b>Exterior</b>	Stainless Steel, Galvanized Steel (Rear /Bottom)
<b>Interior</b>	Stainless Steel, ABS Plastic
<b>Max Storage Capacity</b>	270L
<b>Temperature Control</b>	Microprocessor controlled Adjustable from -25 to -7°C
<b>Drain Evaporator Pan</b>	Fin & Tube type
<b>Outside Dimensions</b>	1250mm (W) x 700mm (D) x 815mm (H)
<b>Inside Dimensions</b>	880mm (W) x 533mm (D) x 588mm (H)
<b>Refrigeration System</b>	Forced Air Cooling
<b>Weight Net/Gross (kg)</b>	117
<b>AC Supply Voltage</b>	1 PHASE 220-240V 50Hz /10amp Plug
<b>Amperage</b>	Rated: 3.9A
<b>Refrigerant</b>	R404A / 190g
<b>Operating Conditions</b>	Ambient Temp.: 5-43°C Voltage Range: Rated Voltage ±6%



Descriptions and specifications are subject to change at any time, without notice. Illustrations for demonstration purposes.

Copyright © 2020 Hoshizaki Lancer Pty Ltd. All rights reserved. E&OE Date: Sept 2020