

# WBS-MATT-PB

## RUGGED, DURABLE AND RELIABLE

Each TacMed Solutions™ product is designed from the ground up for ruggedness and durability with careful consideration of materials and manufacturing processes to create products that last. They are water resistant and can be used in nearly any weather condition or environment, and can be transported in any vehicle to ensure the most authentic training experience.

## REMOTE CONTROLLED WITH REAL-TIME SENSOR DATA

All TacMed Solutions™ high-fidelity simulators are operated with a long-range touchscreen remote controller which includes real-time telemetry to monitor medical interventions. Easy to use software takes only minutes to learn and sensor data is immediately displayed on the main control screen for quick reference. The display shows key vitals and provides instructors with instant data on the effectiveness of student interventions such as tourniquet application, wound hemostasis, airway intervention, needle decompression, and chest tube placement.

## REMOTE CONTROL & SENSOR FEATURES

The remote control offers a color touchscreen for ease of operations. It provides full system operation from up to 200 yards away and includes real-time telemetry for sensor feedback and vitals data.



Color touchscreen remote control



2-way communication audio system (speak and hear through simulator)

- Respiratory status (regular, tension pneumothorax, stopped)
- Respiration rate
- Airway status
- Alert, conscious, unconscious, anxious
- Intubation sensor (tracheal, esophageal, RMS, time)
- Inguinal crease wound (bleeding status, pressure applied, and time)
- Amputation bleeding/occluded (proper tourniquet application)
- Blood loss (volume)
- Heart rate
- Blood pressure
- Patient alive/expired

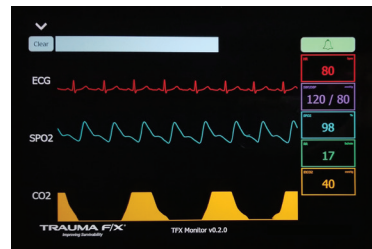
## TACMED SOLUTIONS™ MULTIPLE AMPUTATION TRAUMA TRAINER® (MATT™) AWARDS

AMSO Award

SBIR Award

Governors Award

Modeling & Simulation Training Team Award



Optional Vital Signs Monitor



# WHOLE BODY SIMULATOR HEMOSTATIC-PB

## WBS-MATT-PB

RUGGED HIGH-FIDELITY SIMULATOR FOR TRAUMA TRAINING IN ANY ENVIRONMENT.

### PRODUCT SPECIFICATIONS

PRODUCT #	CAUCASIAN		AFRICAN AMERICAN		
	TFX-WBS-MPB-1		TFX-MPB-AA-1		
DIMENSIONS	LENGTH	WIDTH	CHEST	NECK	SHOULDERS
	55in 139.7cm	23in 58.4cm	45in 114.3cm	17.5in 44.5cm	51in 129.5cm
WEIGHT	FULL - 163lbs / 73.9kg			EMPTY - 155lbs / 70.3kg	
POWER SUPPLY	Four (4) 18V Li-ion batteries			BLOOD RESERVOIR -2 liters	

### CONTRACT VEHICLES

GSA	GS-07F-063DA
DLA ECAT	SPE2DH-18-D-0008
PEO STRI TATT II	W900KK-19-D-0005
PEO STRI VPSS	W900KK-18-D-0012
NATO Logistics Stock Exchange	LB-KGS-01N

#### Confidentiality Notice:

TacMed Solutions™ and Multiple Amputation Trauma Trainer® (MATT™) are registered trademarks of TacMed Solutions™ Solutions, Inc. This document contains protected information and its contents constitute Confidential and Proprietary Information. Any unauthorized use, disclosure or distribution is strictly prohibited without prior written consent by an authorized TacMed Solutions™ associate.

# WBS-MATT-PB

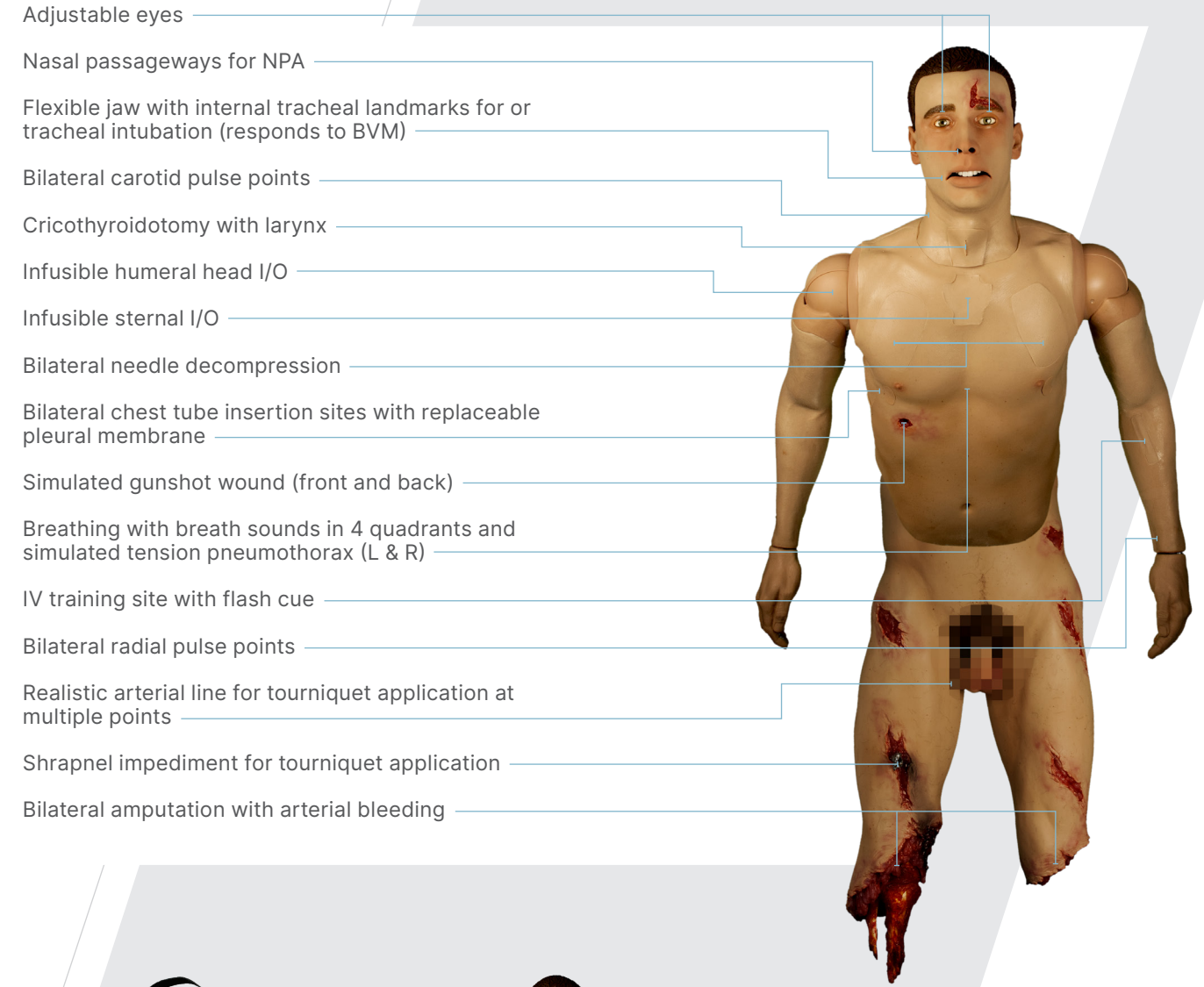
The TacMed Solutions™ Whole-Body Simulator (WBS) MATT-PB is a rugged, realistic full body trainer for the treatment of severe trauma. Purposebuilt for field exercises and for use in any weather or environment, the WBS MATT-PB offers realistic leg movement and lifelike arterial bleeding that deliver ultra-high-fidelity training for a truly immersive learning experience. It also incorporates pulses, breathing, and real-time feedback through our long-range remote control. Students can physically locate both radial and carotid pulses, assess breathing patterns and use this information to perform appropriate interventions.



## KEY BENEFITS

- ▶ Advanced sensor technology provides trainers/learners with instantaneous feedback of applied pressure, time to occlude bleeding, and volume of blood loss for after action reporting
- ▶ Simulated breathing and coordinated breath sounds in 4 quadrants with palpable radial and carotid pulse points
- ▶ Simulated tension pneumothorax on either side with appropriate physiologic cues
- ▶ 2-way communication audio system allows trainer to speak and hear through the simulator
- ▶ Bilateral chest tube insertion sites with replaceable, multiple use skin plugs
- ▶ Flexible jaw with internal tracheal landmarks for orotracheal intubation
- ▶ Eyes can be manually rotated to simulate a dilated or pinpoint pupil
- ▶ Sensored oral airway cavity (with teeth and tongue) for oropharyngeal intubation
- ▶ Nasal passageways for nasopharyngeal intubation
- ▶ Realistic manubrium allows intraosseous (I/O) training with fluid infusion
- ▶ Simulated cricothyroidotomy with larynx and replaceable skin plugs
- ▶ Needle decompression (full size 3.25" 14 gauge needle) with air release and sensor feedback with replaceable multi-use skin plugs and pleural membranes
- ▶ Double amputation with multiple tourniquet points that accurately simulate pulse and arterial bleeding
- ▶ Amputations require proper tourniquet application or manual pressure to occlude bleeding
- ▶ 90-degree waist adapter allows simulator to be placed in a sitting position
- ▶ Lifelike leg movement, remote controlled using practical and durable special effects animatronics technology
- ▶ Specially formulated synthetic tissue with unparalleled realism and durability providing visual and tactile stimuli
- ▶ Instantaneous feedback provided through proprietary remote control (RC) transmitter with extended operating range
- ▶ Can be used with human actors placement
- ▶ Responds to direct femoral artery pressure for immediate bleeding control
- ▶ Crepitus to cue for crushed pelvis injury
- ▶ Specially formulated synthetic tissue with unparalleled realism and durability providing visual and tactile stimuli
- ▶ Optional bleeding amputation arm and interchangeable priapism
- ▶ Scrotal Avulsion
- ▶ Water resistant
- ▶ Easy to clean and maintain after use

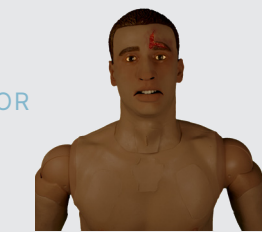
## FEATURES GUIDE



ADDITIONAL OPTIONS



ECG SIMULATOR



AFRICAN AMERICAN VERSION  
TFX-MPB-AA-1

### OPTIONAL FEATURES

- Optional bleeding amputation arm
- Optional priapism