

# APL-PB

## RUGGED, DURABLE AND RELIABLE

Each TacMed Simulation™ product is designed from the ground up for ruggedness and durability with careful consideration of materials and manufacturing processes to create products that last. They are water resistant and can be used in nearly any weather condition or environment, and can be transported in any vehicle to ensure the most authentic training experience.

## REMOTE CONTROLLED WITH REAL-TIME SENSOR DATA

All TacMed Simulation™ high-fidelity simulators are operated with a long-range touchscreen remote controller which includes real-time telemetry to monitor medical interventions. Easy to use software takes only minutes to learn and sensor data is immediately displayed on the main control screen for quick reference. The display shows key vitals and provides instructors with instant data on the effectiveness of student interventions such as tourniquet application, wound hemostasis, airway intervention, needle decompression, and chest tube placement.

## REMOTE CONTROL & SENSOR FEATURES

The remote control offers a color touchscreen for ease of operations. It provides full system operation from up to 200 yards away and includes real-time telemetry for sensor feedback and vitals data.



Color touchscreen remote control



2-way communication audio system (speak and hear through simulator)

- Respiratory status (regular, tension pneumothorax, stopped)
- Respiration rate
- Airway status
- Alert, conscious, unconscious, anxious
- Intubation sensor (tracheal, esophageal, RMS, time)
- NPA insertion
- Chest tube placement
- Needle decompression
- Teeth pressure
- Heart rate
- Blood pressure
- Patient alive/expired

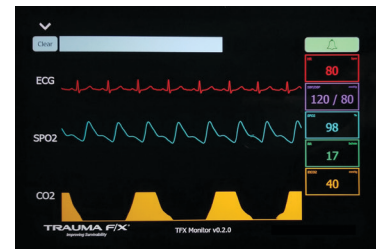
## TACMED SIMULATION™ MULTIPLE AMPUTATION TRAUMA TRAINER® (MATT™) AWARDS

AMSO Award

SBIR Award

Governors Award

Modeling & Simulation Training Team Award



Optional Vital Signs Monitor



# AIRWAYPLUS LIFECAST PULSES/BREATHING

## APL-PB

MEDICAL SIMULATOR TO ADDRESS THE TREATMENT OF TRAUMATIC UPPER BODY INJURIES, INCORPORATING PULSES, BREATHING, AND REAL-TIME FEEDBACK.

### PRODUCT SPECIFICATIONS

PRODUCT #	CAUCASIAN		AFRICAN AMERICAN		
	TFX-APLPB-1		TFX-APLPB-AA-1		
DIMENSIONS	LENGTH	WIDTH	CHEST	NECK	SHOULDERS
	36in 91.4cm	23in 58.4cm	45in 114.3cm	17.5in 44.5cm	51in 129.5cm
WEIGHT	FULL - 83lbs / 37.6kg		EMPTY - 80lbs / 36.3kg		
POWER SUPPLY	Two (2) 18V Li-ion batteries				
CASE DIMENSIONS	51" x 26" x 12"; 153 lbs.   129.5cm x 66cm x 30.5cm; 69.4kg				

### CONTRACT VEHICLES

GSA	GS-07F-063DA
DLA ECAT	SPE2DH-18-D-0008
PEO STRI TATT II	W900KK-19-D-0005
PEO STRI VPSS	W900KK-18-D-0012
NATO Logistics Stock Exchange	LB-KGS-01N

#### Confidentiality Notice:

TacMed Simulation™ and Multiple Amputation Trauma Trainer® (MATT™) are registered trademarks of TacMed Simulation™, Inc. This document contains protected information and its contents constitute Confidential and Proprietary Information. Any unauthorized use, disclosure or distribution is strictly prohibited without prior written consent by an authorized TacMed Simulation™ associate.

# APL-PB

The TacMed Simulation™ **AirwayPlus Lifecast - Pulses/Breathing (APL-PB)** medical simulator was created specifically to address the treatment of traumatic upper-body injuries and incorporates pulses, breathing, and real-time feedback to create a uniquely realistic training experience for medics and first responders.

The **APL-PB** is constructed with a durable urethane core and specially formulated, life-like silicone skin, and is designed to operate in inhospitable conditions and tough, outdoor scenarios. It is an extremely effective multi-purpose training tool allowing learners to perform critical life-saving tasks that include maintaining an airway, needle decompression, cricothyroidotomy, intraosseous (I/O) infusion, and chest tube insertion.

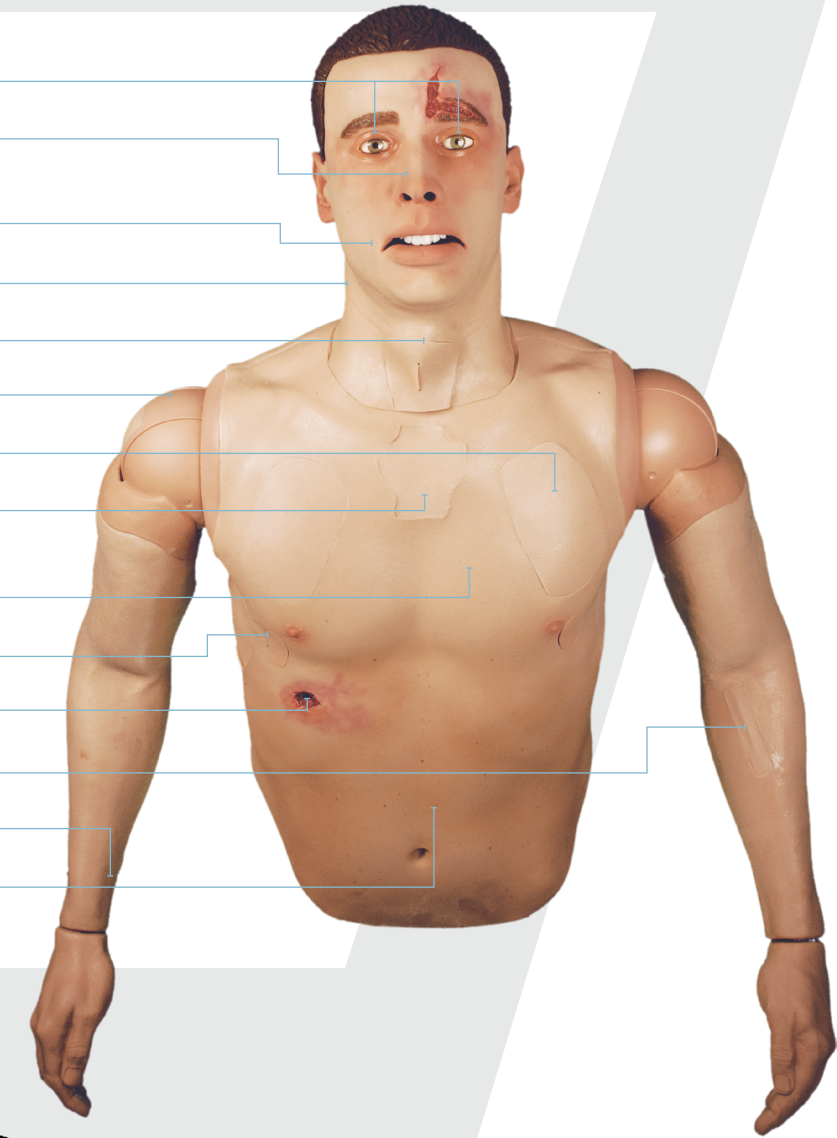


## KEY BENEFITS

- ▶ Multiple sensors provide trainers/learners with instantaneous feedback for After Action Reporting via the Remote Control
- ▶ Simulated breathing and coordinated breath sounds in 4 quadrants with palpable radial and carotid pulse points
- ▶ Simulated tension pneumothorax on either side with appropriate physiologic cues
- ▶ 2-way communication audio system allows trainer to speak and hear through the simulator
- ▶ Infusible intraosseous trainer at the humerus
- ▶ Bilateral chest tube insertion sites with replaceable, multiple use skin plugs
- ▶ Flexible jaw with internal tracheal landmarks and realistic tongue for orotracheal intubation
- ▶ Eyes can be manually rotated from normal to pinpoint or dilated pupil, or closed
- ▶ Oral airway cavity (with teeth and tongue) for oropharyngeal intubation
- ▶ Teeth sensor to detect excessive contact during intubation
- ▶ Nasal passageways for nasopharyngeal intubation with sensor to indicate proper placement
- ▶ User selectable airway obstruction at the nose or throat to cue for surgical cric
- ▶ Simulated cricothyroidotomy with larynx and replaceable skin plugs
- ▶ Reinforced silicone arms with articulating shoulders and full arm rotation
- ▶ Realistic manubrium allows intraosseous training with fluid infusion
- ▶ Interactive needle decompression training sites (full size 3.25" 14 gauge needle with air release)
- ▶ Infusible IV training site with flash cue at the arm
- ▶ 90-degree waist adapter allows simulator to be placed in sitting position when connected to lower body
- ▶ Bubbling gunshot wound to the chest
- ▶ Water resistant
- ▶ Easy to clean and maintain after use
- ▶ Optional amputation or burn arms
- ▶ Senses and responds to BVM ventilation
- ▶ Gastric rise with esophageal ventilation

## FEATURES GUIDE

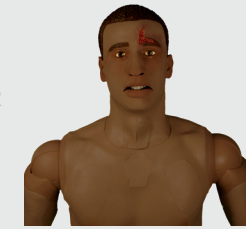
- Adjustable eyes
- Nasal passageways for NPA
- Flexible jaw with internal tracheal landmarks for orotracheal intubation
- Bilateral carotid pulse points
- Cricothyroidotomy with larynx
- Infusible humeral head I/O
- Bilateral needle decompression
- Infusible sternal I/O
- Breathing with breath sounds and left/right tension pneumothorax
- Bilateral chest tube insertion sites
- Bubbling gunshot wound
- Infusible IV training site with flash cue
- Bilateral radial pulse points
- Gastric rise with improper intubation



ADDITIONAL OPTIONS



ECG SIMULATOR



AFRICAN AMERICAN VERSION  
TFX-APLPB-AA-1