



Perch

Imported in North America by :
Peter John M. Distributions inc.
#114 - 6951 - 72nd street
Delta, BC, Canada V4G 0A2

info@guzzieandguss.com
1-888-597-0992

Please read this instruction manual carefully before using this product.
Be sure to save these instructions for future reference.

Thank you,
We thank you for purchasing the Perch. We are honored that you have decided to trust us and to offer this gift to your little one. At guzzie+Guss, we are committed to developing quality products, clever and easy to use with great attention to make your life and that of your children easier so you can focus on more important things. We hope you and your baby will love your Perch hook on chair.

IMPORTANT

It is important that you read and follow the instructions in the manual. Please ensure that all parts are properly attached and moving parts in working order. Please pay special attention to the assembly and installation of the Hook on Chair. Read all warnings and safety precautions before using.

Having read and followed all instructions in this manual, please keep it in a safe place to review if necessary. If you have a problem with the installation of the Perch or use, please contact guzzie+Guss at info@guzzieandguss.com. A member of our team will be very happy to help you. You will be asked to provide us the product number and date of manufacture; this information can be found on the frame of your hook on chair.



WARNINGS

Failure to follow these warnings and the instructions could result in serious injury or death.

Fall Hazard. To prevent falls:

- ALWAYS use the restraints, adjust to fit snugly
- Keep table and seat clean and dry to prevent slipping.
- To prevent tip over, check stability of table before and after seating child.
- Never Leave child unattended, Always keep child in view while in the Hook-on chair.

Never use with:

- × glass table top
- × loose table top
- × single pedestal table
- × card table
- × table leaf / drop leaf table
- × table cloths or placemats (other than the guzzie+Guss silicone placemat) .

Child can use nearby objects to push chair off, NEVER use the hook-on chair:

- × with ordinary chair underneath
- × in reach of table legs
- × near island below counter tops

Use only for :

- children up to: 37 pounds (17kgs)
- children who can sit up without help
- tables 0.6 inches to a Max of 3.75 inches thick (15mm to 95mm)

- Do not use without all tips (suction cups or other locking/latching mechanisms) attached securely to table surface.
- Discontinue use if child, when seated in hook-on chair, is able to move the hook-on chair arms on the table top.
- Do not allow other children to play near or walk under hook-on chair while in use. Before removing child from hook-on chair, be sure child's legs are free from hook-on chair
- Discontinue use if hook-on chair is broken, contact guzzie+guss immediately for replacement parts
- Keep coverings, plastic bags away from children to avoid suffocation, these these are not toys



WARNINGS

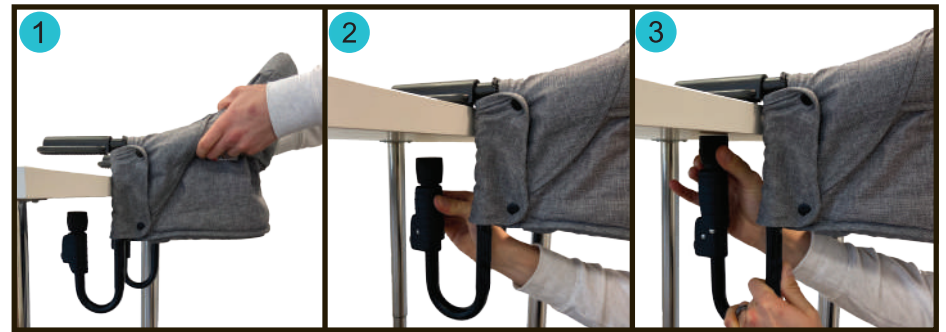
- Make sure the Perch is attached securely to the table before placing the child in the chair.
- Always inspect the table to make sure that it is safe prior to placing your child into the Perch.
- Not all tables are suitable for attachment of the hook-on chair. If in doubt do not use the hook-on chair.
- The table/surface you choose to attach the Perch on to requires being structurally sound and stable. Tables designed with tongue and groove, drop leaf, and tables with joints are not recommended. The table should also be able to hold 75 lbs (34kgs).
- Do not use the hook-on chair on a table that has any screws, staples, sharp edges, holes or gaps, on the top or bottom surface, which might injure the child.
- The Perch should only be used with only one child.
- Place only one leg through each side of the Passive restraint.
- Do not leave the Perch close to any heat source including but not limited to, radiators, fireplaces, electric heating coils and gas stoves.
- Always ensure that all hazards such as electrical devices, knives and hot liquids are kept out of the reach of the child in the hook-on chair.
- Never leave the hook-on chair with the child seated in it where cords, curtains or other objects may be used by your child to climb out or cause the suffocation.
- Do not attach any non guzzie+Guss authorized objects (such as diaper bags) to the Perch as this may affect the stability and safety of the product.
- Do not use tablecloths on the tabletop; this may interfere with the proper functioning of the clamps.

INSTALLING THE PERCH

READ ALL INSTRUCTIONS BEFORE ASSEMBLY AND USE OF CHAIR.
KEEP INSTRUCTIONS FOR FUTURE USE.

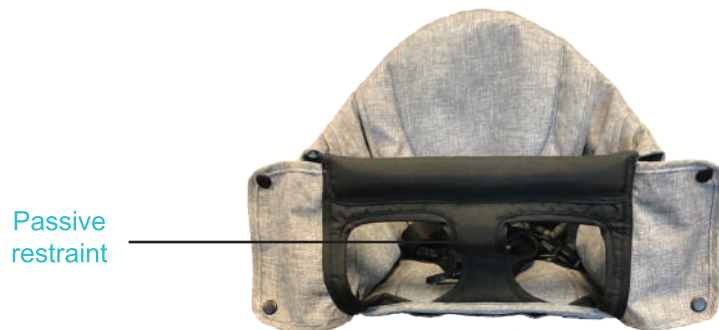
The table must be a minimum thickness of 15 mm (0.6") and no more than 95mm (3.75").

- Slip the Perch onto the table, 100% of the Top paw must be in contact with the table surface. (pic1)
- Raise the height adjustment bar as high as possible. (pic2)
- Locate the tightening cap on the top of the height adjustment bar and turn to tighten the Perch against the bottom of the table. (pic3)



IMPORTANT: Periodically check that the height adjustment bar is securely tightened.

WARNING: Always inspect the hook-on chair before use and make sure it is working correctly, that it is not damaged. Discontinue use if hook-on chair is broken.

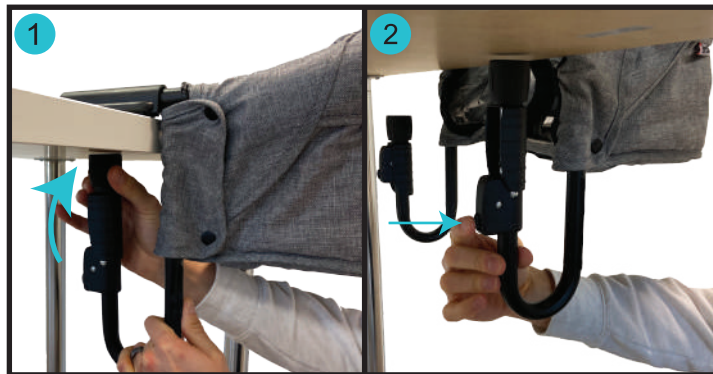


UNINSTALLING THE PERCH

Removing

- Locate the cap on the adjustment bar and slightly turn to loosen the Perch. (pic1)
- Press on the height adjustment button to release the tension completely, and then remove the hook-on chair from the table. (pic2)

Discontinue use if hook-on chair is broken. contact guzzie+Guss immediately for replacement parts or service.



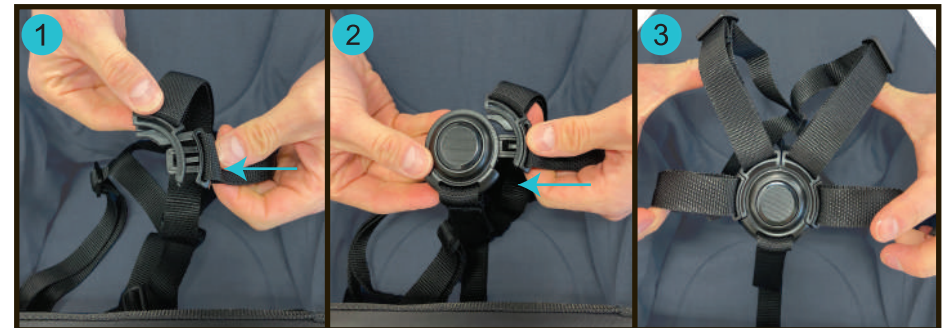
Do not use without all locking/latching mechanisms attached and tightened securely to the table surface.

WARNING: Never attempt to uninstall or close your hook-on chair with your child inside. Make sure your child is clear of moving parts.

USING THE PERCH

Using the harness

- To use the 5-point harness, connect the shoulder belt with the waist belt. (pic1)
- Insert the buckle into the crotch receptacle. (pic2)
- Repeat on the other side. (pic3)
- To remove the straps, press the circular release button, and slide the waist straps out.



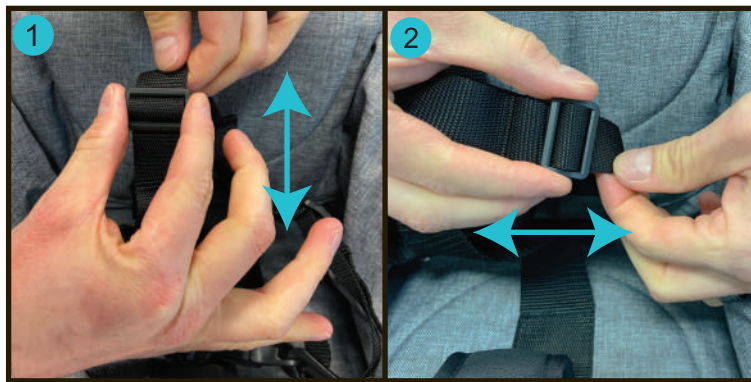
WARNING: Always fasten the 5-point harness securely and properly around the child's body whenever the child is seated in the chair.

WARNING: Never leave the child unattended when seated in the chair.

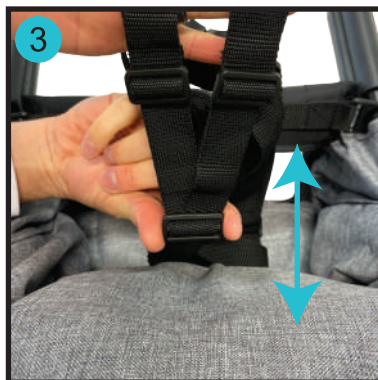
USING THE PERCH

Using the harness

- The length of the shoulder straps can be changed by sliding the buckle on each shoulder strap. (pic1)
- The waist belts are adjustable on either the right or left by using the adjustment buckles on the waist strap. (pic2)



The Perch is also equipped with a unique rear harness clip, which allows you to adjust the shoulder straps position on your child's shoulder. (pic3)



CARE & MAINTENANCE

- Regularly check the Perch for any damage or for missing components. Use only guzzie+Guss approved replacement parts available through authorized service centers.
- To clean the frame, wipe metal tubing with a soft damp cloth and mild soap or cleaning solution. Do not polish or use harsh abrasives.
- To wash the seat fabric, first remove the enclosed seat board. Fabric can be hand or machine washed. Use cold water and mild detergent in the gentle cycle.
- Do not use a dryer to dry fabric, only hang or air dry.
- Do not use any bleach based products to clean the Perch.
- Always dry metal parts to avoid the formation of rust.
- Continued and extended exposure to sunlight and the elements can change the colour of many materials. To avoid fading, always cover and store in a shaded area.
- To keep the fabric from shrinking, always place the seat fabric on the frame while still wet.
- For spot cleaning, use a damp cloth and mild soap, then air dry completely before storing.
- Always check the strength of the fabric each time the fabric is washed.
- Always store in a well ventilated area.



WARRANTY

Your guzzie+Guss item is warranted to be free from any manufacturing defects for 1 year from the date of purchase under normal use and in compliance with the operating instructions. This warranty cannot be extended and an extended warranty cannot be purchased. This warranty is not transferable and extends only to the original retail purchaser and is only valid when supplied with proof of purchase. PLEASE RETAIN PROOF OF PURCHASE FOR THIS LIMITED WARRANTY. The warranty is valid only in the original country of purchase

This warranty is subject to the conditions set forth by country in which the items were purchased. Conditions may vary. guzzie+Guss will not ship replacement or repair parts out of the country of purchase. guzzie+Guss will provide replacement parts or conduct repairs as determined fitting by the company. guzzie+Guss reserves the right to exchange item with a replacement part. Some parts may be replaced with newer model parts as the items are improved over time. Please NOTE that all issues will NOT be covered by this warranty if it is deemed that your unit has been damaged because of misuse or neglect of regular maintenance.

Warranty is nullified if:

- The issue is caused by misuse or poor maintenance. Please refer to this instruction booklet for guidance on use and maintenance.
- Damage is caused by improper installation of guzzie+Guss parts and/or accessories. Please refer to this instruction booklet for guidance on assembly and use.
- Damage is corrosion, mold or rust caused by lack of maintenance or service.
- Damage is due to general wear and tear, which is the result of everyday use or negligence.
- Damage is caused by sun intensity, sweat, detergents, damp storage or frequent washings.
- Repairs or modifications are carried out by an unauthorized third party.
- Item is purchased from an unauthorized retailer. Approved retailers are listed on our website at www.guzzieandguss.com
- Item is second-hand.
- Item is damaged as a result of an accident, airline or freight damage.

guzzie+Guss reserves the right to determine if warranty terms and conditions have been met. Please contact your local distributor if you have any questions regarding warranty.

WARRANTY

guzzie+Guss and its representatives do not accept any responsibility for damage caused to your table/surface while the Perch is being used.

Except as expressly provided by this limited warranty guzzie+Guss shall not be RESPONSIBLE FOR ANY INCIDENTAL OR CONSEQUENTIAL DAMAGES ASSOCIATED WITH THE USE OF THE guzzie+Guss PRODUCT OR A CLAIM UNDER THIS AGREEMENT, WHETHER THE CLAIM IS BASED ON CONTRACT, TORT OR OTHERWISE. In any event, guzzie+Guss's liability, if any, shall be limited to the purchase price of the guzzie+Guss item.

The foregoing statements of warranty are exclusive and in lieu of all other remedies. Some jurisdictions do not allow the exclusion or limitation of incidental or consequential damages, so this limitation or exclusion may not apply to you.

Where to find the Serial number & Date of manufacture



Where to find label

Example Serial label