

Turnbull's

Northumbrian Food

Easter

Love Food, Love Local



One of Britain's
BEST
Butchers



Easter 2024 at Turnbull's

Easter this year falls on Sunday 31st of March. This spring holiday is a great time to get together with friends and family to enjoy some good food. Whatever meal you want to prepare it will be extra tasty with the best ingredients.

To make sure you are not disappointed, place your Easter orders now and you will have what you need for a real memorable meal. We have everything from the finest Northumbrian Lamb to alternatives like Turkey or Pork.

Placing your order

We recommend ordering as early as possible to avoid disappointment.

We are only able to take orders for the items listed on the order form; all other items will be available to collect in store or we **recommend buying in advance.**

Easter Orders are available to be collected on the following dates only:

- Thursday 28th March
- Friday 29th March
- Saturday 30th March



ORDERS CAN BE PLACED IN THE FOLLOWING WAYS:

- 🍷 Call into the Food Hall and place an order with a member of our team
- 🌐 Order Online with ease using our website www.turnbullsfood.co.uk



Order in-store or
Scan the QR code or visit
www.turnbullsfood.co.uk

Legs of Lamb

Roast lamb must be the classic and traditional choice for an delicious lunch and a leg will make a very tasty choice for a Easter. All of our Lamb is sourced from farms across Northumberland via the Acklington Mart.

Whole Leg of Lamb (On the bone)		
Size	Serves	Price
Whole Leg of Northumbrian Lamb On the bone 3.5-4kg	6-8 People	£70.00
Half Leg of Northumbrian lamb On the bone 1.5-2kg	4-6 People	£40.00

Leg of Lamb (Boned & rolled)		
Size	Serves	Price
Whole Leg of Northumbrian Lamb Boned & Rolled 2.8kg	6-8 People	£68.00
Half Leg of Northumbrian Lamb Boned & Rolled 1.5kg	4-6 People	£42.00



Shoulder of Lamb

Roast Shoulder of Lamb is also every popular at Easter and is ideal for gatherings with friends and family.

All of our Lamb is sourced from farms across Northumberland via the Acklington Mart.

Shoulder of Lamb (On the bone)		
Size	Serves	Price
Whole Shoulder of Lamb on the bone 2.4kg	6-8 People	£42.00
Half Shoulder of Lamb on the bone 1.4kg	4-6 People	£24.00

Roasting Lamb Tips from Butcher Dan



Allow 200-250g of raw meat per person when ordering your joint. Always remove your meat from the fridge about an hour before cooking, cover and leave on the side until it reaches room Temperature. Pre-heat your oven to 200°C / 390°F / Gas 6, this will sear your meat. Baste regularly by spooning over the fats and juices, this will prevent your joint from drying out. Always rest your meat in a warm place for at least 30 minutes before serving, cover with foil and allow the juices to be re-absorbed.

All of these joints require about 15 minutes to sear at the pre-heated temperature of 200°C/390°F/Gas 6 then reduce to the temperatures and timings below.

Lamb Cooking Guide

Rack (3-6 chops)	Sear then 10-20 minutes at 170°C/340°F/Gas 4
Saddle	10-20 minutes per 450g/lb 200°C/390°F/Gas 6
Leg (Boneless)	20-25 minutes per 450g/lb 200°C/390°F/Gas 6
Leg (Carvery)	20-25 minutes per 450g/lb 190°C/355°F/Gas 5
Shoulder	45-55 minutes per 450g/lb 160°C/330°F/Gas 3

Northumbrian Beef

Northumbrian Beef Sirloin (Boned & rolled)

Size	Serves	Price
Sirloin Joint 1kg	3-4 People	£39.00
Sirloin Joint 2kg	4-6 People	£78.00
Sirloin Joint 3kg	8-10 People	£116.00



Rib of Beef (on the bone)

Size	Serves	Price
Rib of Beef On the bone 2.5kg	6-8 People	£75.00
Rib of Beef On the bone 3.5kg	12-14 People	£100.00
Rib of Beef On the bone 4.5kg	14 + People	£125.00

Rib of Beef Roast (Boned & rolled)

Size	Serves	Price
Rib of Beef Boned & rolled 1kg	3-4 People	£38.00
Rib of Beef Boned & rolled 2kg	6-8 People	£75.00
Rib of Beef Boned & rolled 3kg	10 -12 People	£110.00

Northumbrian Beef



Northumbrian Beef Topside

Size	Serves	Price
Beef Topside Joint 1kg	3-4 People	£22.00
Beef Topside Joint 2kg	6-8 People	£44.00
Beef Topside Joint 3kg	10 -12 People	£66.00

Probe Thermometer Temperature Guide

Insert your probe thermometer into the centre of the thickest part of your meat and check the temperature.

This is a guide of temperatures required to cook meats to your preference

Meat	Rare	Medium	Well Done
Beef	55-60°C	60-65°C	75°C+
Lamb	-	65-70°C	75°C+
Pork	-	-	75-80°C+



Poultry

Fresh Roasting Chickens

Size	Serves	Price
Fresh Roasting Chicken 1.8-2.2kg	3-4 People	£12.00

Boneless Turkey Crowns

Size	Serves	Price
Small Boneless Turkey Crown 1.2kg+	4-6 People	£20.00
Medium Boneless Turkey Crown 2kg+	6-8 People	£40.00
Large Boneless Turkey Crown 4.5kg+	10 -12 People	£75.00

Local Pork

Pork Loin (boned & rolled)

Size	Serves	Price
Pork Loin Joint Boned & rolled 1kg	3-4 People	£20.00
Pork Loin Joint Boned & rolled 2kg	6-8 People	£38.00
Pork Loin Joint Boned & rolled 3kg	10 -12 People	£55.00

Porchetta

Size	Serves	Price
Porchetta Joint 1.5kg	3-4 People	£28.99

Meat	Rare	Medium	Well Done
Beef	55-60°C	60-65°C	75°C+
Lamb	-	65-70°C	75°C+
Pork	-	-	75-80°C+



Friday 22nd March at 12:30pm

Five Fridays

UPSTAIRS IN THE LOFT

Join us in The Loft and enjoy complimentary Prosecco while you browse the range of beautiful homewares and gorgeous gifts PLUS:

**Spend £50 or more and get
10% off your shopping**

**Spend £75 or more and get
15% off your shopping**

**Spend £100 or more and get
20% off your shopping**

Click and collect online at theloftalnwick.co.uk

Special Roasts

Going all out over Easter? We've got you. Take a look at these extra special creations prepared by our skilled team of Butchers.



Family Sized Beef Wellington

A firm favourite around any dinner table!

We take one and a half pounds of prime fillet mignon, cover it in our home made pate, caramelised onions and then wrap it all up in puff pastry ready for the oven.

1.2kg Serves 4-6

£72.00

Easter Hamper

Whole Leg of Lamb Hamper

Includes a succulent leg of Northumbrian Lamb on the bone and all the trimmings for the perfect family dinner that is full of flavour.

Pour over the perfectly seasoned Akins & Potts Classic Lamb Gravy and serve with Mint Sauce for everyone to enjoy.

Whole Leg Northumbrian Leg of Lamb

1 Atkins & Potts Classic Lamb Gravy

1 Jar of Mint Sauce

2kg New Potatoes

400g Parsnips

500g Carrots

1 Cauliflower

1 Large Swede

1 Broccoli

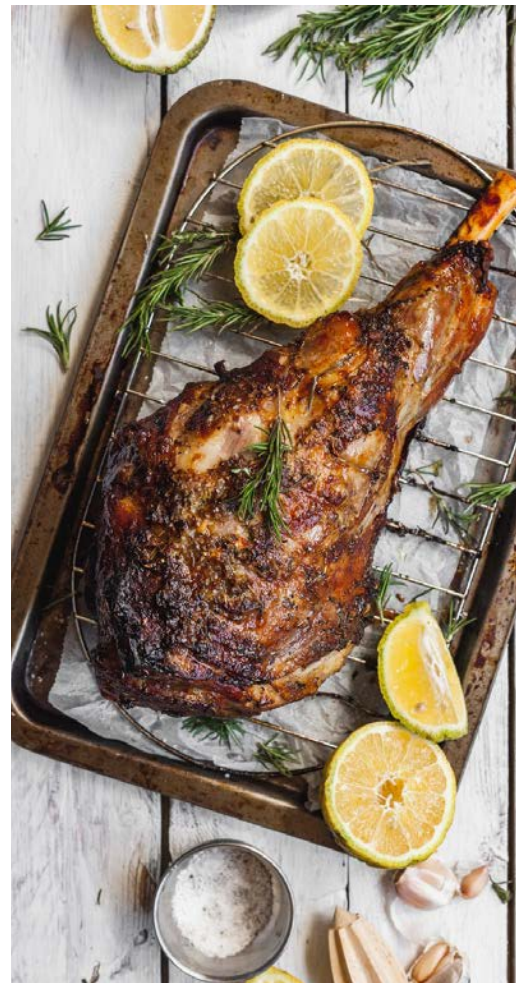
1 Savoy Cabbage

Half Leg of Lamb Serves 4-6

£65.00

Whole Leg of Lamb Serves 6-8

£95.00



Northumbrian Lamb

Lamb from Turnbull's will always be the best available.

To bring you the best at all times of year we buy all of our Lambs from local farmers via the Acklington Mart.

Lamb quality from different farms throughout the year depending on conditions that effect the grass on which the animals feed. We are very lucky in Northumberland to have fantastic areas for grazing.

Whatever the time of year we pick best grass fed animals for us from around the county, so you can be confident that Lamb from Turnbull's will be the best available.



If you are looking for some cooking tips or recipe then check out Butcher Dan's Recipe Vault which contains many different suggestions and helpful hints.

Scan the QR code here.



Placing Your Order

- 1) You can place your order between now and Easter Sunday.
- 2) Orders can only be taken for items from our brochure. If you require something different that we do but is not in the brochure, then we recommend you purchase these items beforehand and home freeze or enquire at the time of ordering about purchasing from our counter on the day of collection.
- 3) You can choose to order in person at our order point in one of our shops, on-line from our Click & Collect shop at www.turnbullsfood.co.uk, or by phone. We are unable to accept orders by email.
- 4) Prices and availability may alter from those published; however, prices at time of ordering are guaranteed.



Order online with ease at:
www.turnbullsfood.co.uk



PLEASE NOTE:

If you require an earlier collection than this date, please check availability with us when placing your order.

Prices may alter from those published; however, prices at time of ordering are guaranteed.

Easter Opening Hours

Day	Northumbrian Foodhall
Friday 29th April (Good Friday)	7:30am - 6pm
Saturday 30th March	7:30am - 6pm
Sunday 31st March (Easter Sunday)	CLOSED
Monday 1st May (Easter Monday)	8am - 4pm
Tuesday 2nd May (Normal Hours)	7:30am - 6pm



Order online with ease at:
www.turnbullsfood.co.uk



Turnbull's
Northumbrian Food

Telephone: 01665 602186

Turnbull's Northumbrian Food Hall

Willowburn Retail Park,
Taylor Drive, Alnwick,
Northumberland NE66 2HJ

www.turnbullsfood.co.uk
info@turnbullsfood.co.uk

