

MAJOR APPLIANCES

Microwaves	36
Washing	37
Rangehoods	39
Air conditioning	41
Vitrifrigo refrigeration	42
Dometic fridges	46
Engel fridges	47
Fridge accessories	48
Fridge spare parts	48
Stoves and cookers	49





MICROWAVES



CAMEC MICROWAVE 20 LITRE 700 WATT
044431

Compact design microwave with easy to read LCD display and simple operation so you can be cooking in no time! Includes 5 power levels, preset mode - allows you to program the microwave to start at a later time, one-touch Quick Start cooking, auto defrost, auto cook modes make cooking or heating common items quick and easy. Simply select the food type then select either the weight or quantity to start.

Cooking/heating modes include: Milk/coffee, rice, spaghetti, potatoes, auto reheat, fish, pizza and popcorn.

FEATURES:

- Latest design
- Digital control
- 8 Auto Cook modes
- Clock
- Blue LCD display
- Quick Start cooking
- Auto Defrost
- Delayed start cooking
- Multi stage cooking
- Child lock
- 12 month warranty

SPECIFICATIONS:

- Dimensions: 452mm(w) x 262mm(h) x 333mm(d)
- Weight 10.5kg
- 700W output/1200W input
- 240V operation



CAMEC MICROWAVE 25 LITRE 900 WATT
041439
043520

GLASS TRAY REPLACEMENT

Designed with the RV market in mind, our microwave features a large mirror finish door that is an ideal match for modern RVs and cookers with mirror top lids.

FEATURES:

- Auto Cook with 8 pre-set common food settings
- Stylish design to suit RVs
- 5 selectable power levels
- Easy defrost mode

SPECIFICATIONS:

- Dimensions: 483mm(w) x 281mm(h) x 399mm(d)
- Weight: 14.8kg
- 900W output/1400W input
- 240V operation



COMPACT RV 4KG FRONT LOAD WASHING MACHINE
042308

With a large 4kg capacity for its size, you can now enjoy all of the features and wash modes you are accustomed to with your home machine, right in your RV. Requiring only a cold water supply, hot water washing is possible using the machine's in-built heater element.

FEATURES:

- 15 wash programs including 3 quick wash modes (14, 30 and 59 min)
- 400-1000 RPM spin speed (adjustable)
- Special AQUAPLUS "delicate skin" wash mode
- Auto water level control
- Delayed start option
- Bi-directional wash selector knob
- Wash time remaining display

SPECIFICATIONS:

- 240V operation
- Weight: 47kg
- Dimensions: 510mm(w) x 430mm(d) x 700mm(h)
- Water Usage: Min 19L, max 45L depending on load size and wash cycle
- 1300W max power consumption (hot wash)
- 230W power consumption (cold wash)
- 12 month warranty



CAMEC COMPACT RV 3.0KG WASHING MACHINE
044131

Our latest top load washing machine features a larger 3kg washing capacity and is the only machine in its class to offer an optional hot wash cycle using cold water (this feature adds approximately 20-40 min to the cycle time). And our exclusive LED drum light will help you find that missing sock!

FEATURES:

- Economical cold water washing with hot wash option
- Blue LED display with wash time remaining function
- 6 washing program combinations
- High and low water level adjustment for large and small loads
- Precision stainless steel wash tub
- Clothes basket doubles as a tub stabiliser
- LED drum light
- Securing strap and basket included

SPECIFICATIONS:

- 240V operation
- Power consumption: 235W (cold) 1035W (hot)
- Load capacity 3.0kg
- Dimensions: 410mm(w) x 740mm(h) x 420mm(d)
- Water Usage: Approx 20L on low and 26L on high
- Weight: 18kg
- Spin cycle speed: 900 RPM



CAMEC COMPACT RV 2.5KG WASHING MACHINE
041133

Ideal for caravans and motorhomes, this easy to use fully automatic RV washing machine offers washing convenience wherever your travels take you. Featuring simple controls and flexible washing modes, you have the convenience of washing when you want.

FEATURES:

- Economical cold water washing
- Blue LED display with wash time remaining function
- 7 washing program combinations including Quick Wash
- High and low water level adjustment for large and small loads

SPECIFICATIONS:

- 240V operation
- Dimensions: 410mm(w) x 640mm(h) x 420mm(d)
- Water Usage: Approx 15L on low and 20L on high
- Weight: 16kg
- Spin cycle speed: 900 RPM



DOMETIC FRONT LOAD WASHING MACHINE WMD1050
033474

FEATURES:

- Hot or cold water fill
- Can be under-counter or free standing
- Space saving design
- Economy and quick wash options with 9 different programs and 7 temperature options

SPECIFICATIONS:

- Weight: 54kg
- 240V/50Hz
- Dimensions: 495mm(l) x 670mm(h) x 515mm(d)



CAMEC COMPACT RV 3.2KG DRYER
041834

Ideal for caravans and motorhomes, this compact RV Dryer offers drying convenience wherever your travels take you. Featuring simple operation, it is the perfect partner for the Camec 4kg front load washing machine.

FEATURES:

- Specially designed to be mounted upside down if required providing the option of a left or right hand hinged door
- Low maintenance with easy to clean filters
- 850W 240V operation
- Rear venting with universal RV duct kit included

SPECIFICATIONS:

- Dimensions: 495mm(w) x 580mm(h) x 410mm(d)
- Weight: 17kg
- Voltage: 220-240V, 50/60Hz

WASHING MACHINE SPARE PARTS FOR 2.5KG (041133) & 3KG (044131)



REPLACEMENT STABILISER BASKET - PART ID C2 - 041921



REPLACEMENT LID INCLUDING MAGNET - PART ID 2 - 041922



REPLACEMENT INLET HOSE - PART ID 80 041923



REPLACEMENT WATER LEVEL SENSOR - PART D 7 - 041908



REPLACEMENT/ MOUNTING BRACKET - PART ID C1 - 041920



DRAIN HOSE - PART ID 89 042798



PUMP HOSE HQ RUBBER - PART ID 93 042797



HOSE CLAMP - PART ID 94 - 042796



WATER INLET VALVE - PART ID 16 - 041912



SPIN SENSOR - PART ID 6 - 041907



PCB BOARD - PART ID 5
Suits 041133 only.
041906



MODE SWITCH - PART ID 55 T - 041911



V-BELT - PART ID 65 041914



MOTOR - PART ID 68 041909



MOTOR PULLEY - PART ID 66 - 041919



LID SPRING - PART ID 21 041915



DRAIN PUMP - PART ID 91 - 041913



REPLACEMENT BASE COVER - PART ID 31 041928



AIR TRAP HOSE - PART ID 9 - 041918



PCB BOARD PART ID 5 044673
Suits 044131 only

WASHING MACHINE SPARE PARTS FOR FRONT LOAD 4.0KG 042308



DRAIN HOSE - PART ID 142 - 043529



DAMPER ASSEMBLY - PART ID 250/251/256/281 043530



CONTROL PANEL - PART ID 31 - 043532



DOOR FRAME - PART ID 62 - 043533



FOOT ASSEMBLY - PART ID 80 - 043534



INLET VALVE - PART ID 134 043535



PRESS SWITCH - PART ID 153 043536



MOTOR - PART ID 161 043537



DOOR LOCK - PART ID 162 - 043538



DOOR SEAL - PART ID 271 - 043539



SUMP/DRAIN - PART ID 272 043540



TUB HOSE - PART ID 273 043541



HEAT ELEMENT - PART ID 286 043542



PULLEY - PART ID 290 043543



PCB - PART ID 328 043545



FILTER COVER - PART ID 604 043546



HINGE ASSEMBLY - PART ID 242B 043550



CONTROL KNOB - PART ID 10 - 043531



BELT - PART ID 292 043544

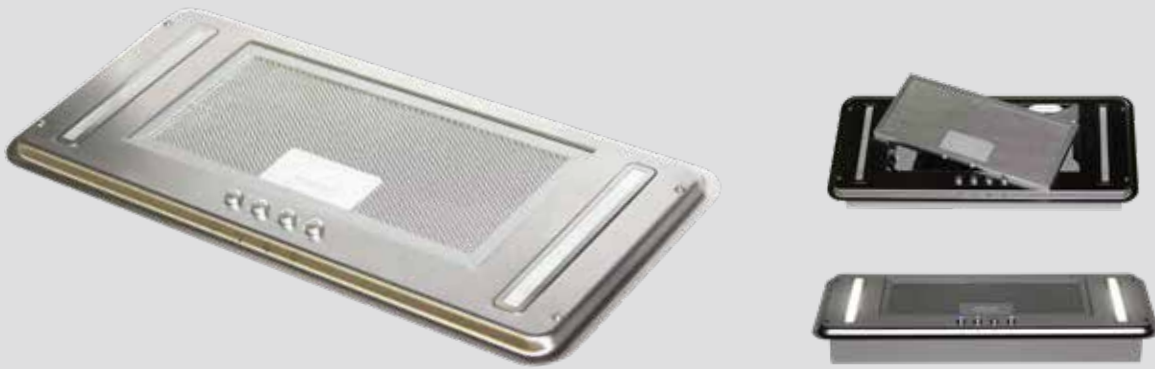


PUMP - PART ID 16 043547



SPRINGS
043548 - LEFT - PART ID 242A
043549 - RIGHT - PART ID 242B

MORE FRONT LOAD 4.0KG SPARES
043551 DISPENSER
DRAWER - PART ID 101



CAMEC 12V TURBO FLUSH MOUNT RANGEHOOD 040865

With a stainless steel exterior and featuring proven components, powerful twin 2-speed extraction fans, removable filter and stylish custom LED strip lighting. Camec's 12V Turbo Flush Mount Rangehood is a great addition to any RV. This rangehood is equipped with twin high performance turbo dual speed fans (not just computer fans) connected to a custom vented ducting system to ensure the swift removal of cooking vapours, odours and heat. Ducting can be directed either through the side or rear of the unit simply by changing the position of the supplied outlet adaptor.

FEATURES:

- Convenient side or rear air venting
- Removable filter for easy cleaning and replacement
- Illuminated, reliable control buttons
- 2 bright LED strip lights
- Stainless steel construction
- Proven design components
- Powerful 12V 2 speed twin turbo extractor fans

SPECIFICATIONS:

- Mounting Cavity - 465mm(w) x 187mm(d) x 53mm(h)
- External Body - 518mm(w) x 228mm(d) x 15.6mm(h)

SUPPLIED ACCESSORIES:

- Outlet adaptor
- 0.5m flexible duct hose
- Allen key



CAMEC RANGEHOOD 12V 2-SPEED LED DOWN LIGHTS 040864

Stainless Steel finish with twin turbo extraction fans and dual low energy LED down lights. Also features a removable filter for easy cleaning and illuminated touch controls. Venting is rear or roof selectable and an optional 50mm venting adaptor (041132) is also available if a venting hose is required.

FEATURES:

- Illuminated control buttons
- Powerful 12V turbo 2 speed twin extractor fans
- Convenient roof or rear air venting
- Removable filter for easy cleaning and replacement.

SPECIFICATIONS:

- 2 low energy LED down lights
- Dimension: 586mm(l) x 305mm(w) x 60mm(h)

RANGEHOOD SPARE PARTS



REPLACEMENT LED DOWN LIGHT LONG LEAD TO SUIT CAMEC 12V RANGEHOOD (REFER CODE 040864)

041751
Each.



REPLACEMENT LED DOWN LIGHT SHORT LEAD (PCB SIDE) TO SUIT CAMEC 12V RANGEHOOD (REFER CODE 040864)

041762
Each.



REPLACEMENT FILTER TO SUIT CAMEC 12V RANGEHOOD (REFER CODE 040864)

041755



REPLACEMENT FAN TO SUIT CAMEC 12V RANGEHOOD (REFER CODE 040864)

041477



REPLACEMENT SWITCH PANEL TO SUIT CAMEC 12V RANGEHOOD (REFER CODE 040864)

041753



REPLACEMENT CIRCUIT BOARD TO SUIT CAMEC 12V RANGEHOOD (REFER CODE 040865 & 040864)

044467



OUTLET ADAPTOR TO SUIT CAMEC 12V RANGEHOOD - REFER CODE 040864

041132

Outlet Adaptor for Camec 12V Rangehood (refer code 040864).



REPLACEMENT FRONT STICKER TO SUIT CAMEC 12V RANGEHOOD (REFER TO CODE 040684)

041754



SWITCH FOR CAMEC RANGEHOOD

003513

Note: This switch will illuminate for the 12V rangehoods.



ELECTROLUX FLUSH MOUNT RANGEHOOD 12V CK150

017022

FEATURES:

- Easy installation with removable washable filter
- Silent 12V operation
- Integrated halogen light. 1 speed fan
- Powerful performance
- Flush mount

SPECIFICATIONS:

- 375mm(l) x 50mm(h) x 140mm(d)



CAMEC RANGEHOOD DUCT TUBE BLACK

042359

To suit 041132 rangehood adaptor. 1000mm length.



IBIS 3 R/C AIR CONDITIONER (8000001) 042523

The Ibis 3 model includes higher capacity heating and cooling and is stylish, ultra low profile, and super quiet.

FEATURES:

- Whisper quiet operation (8Db) quieter on high fan speed than the Ibis 2
- Massive increase in air flow with the unique 'S Flow' air distribution providing more air, more efficiently
- Ultra thin, stylish four-way independently closing inside plenum with easily removable filter for cleaning
- Premium quality generator start technology included as standard (check with your generator supplier for compatibility)
- Easier to fit with the revolutionary weather collar, improving the seal on the roof while reducing amount of sealant required

SPECIFICATIONS:

- Overall Dimensions: 1120mm(l) x 848mm(w) x 222mm(h)
- Plenum Dimensions: 535mm(l) x 535mm(w) x 32mm(d)
- Install Weight: 48kg
- Opening: 360mm x 360mm
- Cooling Capacity: 3.1kW
- White



JABIRU ALL-IN-ONE REVERSE CYCLE AIR CONDITIONER - 6100001 040206

The Jabiru is a unique all-in-one unit designed to fit into the cupboard of your caravan, small RV or camper trailer.

FEATURES:

- Electronic climate control LED control panel
- Full function remote control with sleep timer and dehumidifying functions
- Heat pump reverse cycle heating and cooling with electronic defrost

SPECIFICATIONS:

- Electrical rating (single phase) 240V, 50 hz
- Nominal Cooling Capacity: 2.2KW
- Nominal Heating Capacity: 2.2KW
- Current Draw: Cooling 5.2A
- Current Draw: Heating 5.2A
- Air Delivery Maximum: 120l/s
- Overall Weight: 40kg
- Overall Height: 750mm
- Overall Width: 300mm
- Fascia Depth: 15mm projecting from the outside of the cupboard face
- Recess Required: 747mm(h) x 270mm(w) x 565mm(d) (the rear duct that projects through the wall is 42mm long and 565mm depth, total depth with duct is 607mm)



CORMORANT REVERSE CYCLE AIR CONDITIONER (5750001/5702007) 002497

The Cormorant is one of the highest capacity caravan/RV air conditioners on the market with 3.5KW cooling and heating, suitable for up to 23' vans. The unit boasts remote/electronic controls and is fully reverse cycle with electronic defrost to allow operation in -5°C degrees.

FEATURES:

- Designed to dehumidify the air to help asthma sufferers and fitted with a stylish internal plenum

SPECIFICATIONS:

- Installed Weight (including plenum): 45kg
- Overall Dimensions: 1985mm(l) x 670mm(w) x 360mm(h)
- Plenum Dimensions: 555mm(l) x 535mm(w) x 65mm(h)
- Roof Opening: 360mm(l) 360mm(w)
- Air Delivery Maximum: 150 litres
- Nominal Cooling Capacity: 3.5kw
- Heating Capacity: 3.6kw
- Current Draw: Cooling: 5.6A
- Current Draw: Heating: 5.2A
- Inside Air Delivery, Maximum: 150 litres



DOMETIC HARRIER ROOF MOUNTED AIR CONDITIONER 044262

Featuring the first use of an Inverter compressor in an RV application, eliminate start-up current issues when running from generators or when current supply is restricted.

FEATURES:

- Inverter compressor
- Low start-up current (will run off 2000watt generators)
- Quiet operation
- Sleep mode reduces compressor and fan speed to minimise noise and vibration levels while sleeping
- Remote controlled oscillating vents and cold plasma air purification
- Suitable for either 360 x 360mm or 400 x 400mm roof openings

SPECIFICATIONS:

- Electrical rating: 230V
- Compressor Capacity: 3.7kW
- Cooling Capacity: 3.1kW, 6.5A
- Heating Capacity: 2.8kW, 5.2A
- Operating Temperature Range: -2 to 52°C
- Airflow: 649m³/h (maximum)
- External Dimensions: 750mm(w) x 280mm(h) x 1070(l)mm
- Internal Dimensions: 500mm(w) x 66mm(h) x 520mm(l)
- Roof Opening: 360x360mm or 400x400mm
- Roof Thickness: 30 - 60mm
- Weight: 45kg
- Fan Speeds: 3



SPARROW REVERSE CYCLE AIR CONDITIONER (5850001+ 5852006) 039253

The Sparrow reverse cycle heat pump roof top air conditioner is a lightweight rooftop style unit.

FEATURES:

- The Sparrow provides both heating and cooling as well as filtered and dehumidified air
- Its lightweight design makes it suitable for a range of applications that the bigger units are unable to achieve
- Australian made

SPECIFICATIONS:

- Nominal Cooling Capacity: 2.0kw
- Heating Capacity: 2.2kw
- Current Draw: Cooling: 3.9A
- Current Draw: Heating: 4.0A
- Inside Air Delivery, Maximum: 110l/s
- Total Weight: 29kg
- Overall Dimensions: 975mm(l) x 560mm(w) x 215mm(h)
- Plenum Dimensions: 555mm(l) x 535mm(w) x 65mm(h)

AIR CONDITIONING SPARE PARTS

AIR COMMAND CORMORANT

039356 - CORMORANT PLENUM T/S MID 2008

AIR COMMAND HERON 2.2

002460 - HERON 2.2 CONDENSER FAN MOTOR

002471 - HERON 2.2 CONTROL KNOBS WHITE

002473 - HERON 2.2 SWITCH BOX ASS.

034302 - HERON 2.2 THERMOSTAT

035127 - HERON 2.2 PLASTIC INTAKE GRILL

002472 - HERON 2.2/3 HEATER ELEMENT

002468 - HERON 2.2/3 RETURN AIR FILTER

AIR COMMAND HERON 3.0

002472 - HERON 2.2/3 HEATER ELEMENT

002468 - HERON 2.2/3 RETURN AIR FILTER

AIR COMMAND IBIS

038447 - IBIS MK2 CORM/SPAR REMOTE CONTROL

039469 - IBIS ELECTRONIC CARD

042537 - IBIS SATURN INTERFACE MK2

042098 - IBIS CORMORANT DUST FILTER

043301 - AIRCOMMAND IBIS 3 REMOTE CONTROL

AIR COMMAND SPARROW

041894 - SPARROW CANOPY TOP COVER

AIR COMMAND WREN

002416 - WREN 2000 AIR FILTER

DOMETIC

002501 - DOMETIC A/C FILTER PAD

042066 - DOMETIC GRILL AIR RETURN

DENSO

040953 - DENSO AIR UNIT-INSTALL KIT 6M

040954 - DENSO UB1 ACCESSORY DUCT COVER

040956 - DENSO UB1 FILTER

040957 - DENSO UB1 FUSE (ECU)

040958 - DENSO UB1 DUCT ONLY 3M

OTHER

002523 - H-FRAME T/S COLEMAN/E'LUX/WREN

040585 - EUROPEAN AIR CON HATCH ADAPTER

VITRIFRIGO FRIDGES - INTERNAL COMPRESSOR



Exclusive to Camec, Vitrifrigo is leading worldwide company specialising in industrial refrigeration. Vitrifrigo utilises advanced research and development programs to provide high-quality design, functionality and performance of every product.



VITRIFRIGO C60I FRIDGE 60 LITRE 12-24 VOLT WITH FITTING FRAME AND AIR LOCK
043584

Built in fridge/freezers suitable for RV and marine use complete with Air Lock.

FEATURES:

- Door hinge is interchangeable

SPECIFICATIONS:

- 10.2L Freezer compartment
- Dimensions: 595mm(w) x 1344mm(h) x 602mm(d)
- Weight: 15.8kg
- Current Consumption: 12V 2.8A



VITRIFRIGO C220DP DOUBLE DOOR 220L 12-24 VOLT FRIDGE FREEZER
044465 LEFT HINGE
044466 RIGHT HINGE

Fridge freezer with double door for larger refrigerated spaces..

FEATURES:

- Fridge/Freezer

SPECIFICATIONS:

- 42L freezer compartment
- Dimensions: 540mm(l) x 1455mm(h) x 570mm(d)
- Weight: 42.5kg
- Power Voltage: 12/24V



VITRIFRIGO DP2600 BLACK 2 DOOR FRIDGE/FREEZER 230 LITRE 12-24 VOLT BD-50 COMPRESSOR WITH FITTING FRAME AND AIR LOCK
043659

These 2-door refrigerators have huge capacity and feature large separate freezer compartments for long term storage of frozen foods. The DP2600i, has a flush mount surround for ease of installation and also has the Air Lock catch system as standard equipment. The cooling unit is mounted directly onto the refrigerator cabinet.

FEATURES:

- Reversible hinge
- Internal cooling unit
- LED light in freezer and fridge
- Super silent operation

SPECIFICATIONS:

- Overall Dimensions: 1355mm(h) x 630mm(w) x 597mm(d) (plus handle)
- Weight: 62kg
- Space Required for Installation: 1337mm(h) x 588mm(w) x 593mm(d)
- Capacity: 230 litres, (Fridge 170L and freezer 60L)
- Nominal Input: 54.5w
- Average Consumption: 42w



VITRIFRIGO C115I FRIDGE FREEZER 115 LITRE 12-24 VOLT WITH FITTING FRAME AND AIR LOCK
043587

Built in fridge/freezers suitable for RV and marine use complete with Air Lock.

FEATURES:

- Door hinge is interchangeable

SPECIFICATIONS:

- 17L Freezer compartment
- Dimensions: 525mm(w) x 765mm(h) x 518mm(d) door 42mm
- Weight: 21.2kg
- Current Consumption: 12V, 45W, 3.75A



VITRIFRIGO DP150I BLACK 2 DOOR FRIDGE/FREEZER 150 LITRE 12-24 VOLT BD-50 COMPRESSOR WITH FITTING FRAME AND AIR LOCK
044916

These 2-door refrigerators represent the pinnacle of excellence within the range. They have huge capacity and feature large separate freezer compartment for long term storage of frozen food.

FEATURES:

- Positive door closure, to prevent unwanted openings
- Unique double purpose mounting flange, for both partial built-in or total built in
- Fast reversible opening
- Integrated vent position system to keep the fridge door ajar
- Airlock closure system
- Internal compressor

SPECIFICATIONS:

- Weight: 43kg
- Space Required for Installation: 1095mm(h) x 525mm(w) x 530mm(d)
- Capacity: 150 litres, (Freezer 30L)



VITRIFRIGO C85I FRIDGE 85 LITRE 12-24 VOLT WITH FITTING FRAME AND AIR LOCK
043583

Built in fridge/freezer suitable for RV and marine use complete with Air Lock.

FEATURES:

- Door hinge is interchangeable

SPECIFICATIONS:

- 12.8L Freezer compartment
- Dimensions: 485mm(w) x 791mm(h) x 427mm(d) + door 42mm
- Weight: 25kg
- Current Consumption: 12V, 45W, 3.75A



VITRIFRIGO C47L FRONT LOAD FRIDGE
039898

The compressor mounted on the back has optional mounting positions on the left or right hand side of the cabinet. The unit has black interchangeable hinge door with locking catch. Supplied with a single shelf and slide out drawer.

SPECIFICATIONS:

- Capacity 47 Litres
- Dimensions: 445mm(w) x 392mm(h) x 638mm(d)
- Weight: 19kg
- Power Voltage: 12/24V
- Nominal Consumption: 31W



VITRIFRIGO SLIMTOWER STAINLESS STEEL 12/24V FRIDGE FREEZER WITH AIR LOCK

044457 SLIM 150 140L FRIDGE FREEZER
050091 SLIM 150 140L 12/24

140 litres total capacity with 16 litres of freezer capacity the Vitrifrigo Slimtower150 was designed for the larger van conversions. Just 417mm wide and 450mm deep (front to back including the door). This means the fridge freezer can fit close to the internal side of the van allowing you to give a wider space in front of the fridge. To further maximise the volume of the Vitrifrigo Slimtower150 the compressor is separate to the cabinet, supplied pre-charged with couplings, allowing it to be remotely mounted and then connected to the cabinet once installed.

FEATURES:

- Airlock locking system
- No need for a fitting frame
- Silent/night mode for minimum noise operation
- Turbo mode for maximum performance
- Secop compressor
- 1.5m remote compressor

SPECIFICATIONS:

- 140l total capacity
- 16l freezer compartment
- Dimensions: 417mm(w) x 1513mm(h) x 442mm(d)
- Weight: 42kg
- Power Voltage: 12/24V
- Nominal Input: 47W



VITRIFRIGO C75L FRIDGE FREEZER 75 LITRE
12-24 VOLT AND EXTERNAL COMPRESSOR WITH FITTING FRAME AND AIR LOCK

043562

Built in fridge/freezer with external cooling unit which allows the compressor to be located in a cupboard or other convenient place with sufficient ventilation. Length of connection pipe is approx. 1.6m.

FEATURES:

- Fridge/Freezer

SPECIFICATIONS:

- 10.2L freezer compartment
- Dimensions: 470mm(e) x 622mm(h) x 418mm(d) + door 42,,
- Weight: 20kg
- Power Voltage: 12/24V
- Current Consumption: 12V. 40W, 3.3A



VITRIFRIGO C130L FRIDGE 130 LITRE 12-24 VOLT AND EXTERNAL COMPRESSOR WITH FITTING FRAME AND AIR LOCK

043585 C130L FR/FRZ FITTING FRAME AIR LOCK

043984 C130P FRIDGE ONLY AIR LOCK
050085 C130 PX 12/24V DX OCX FRIDGE ONLY

Built in fridge with external cooling unit which allows the compressor to be located in a cupboard or other convenient place with sufficient ventilation.

FEATURES:

- Adjustable thermostat control
- Remote compressor arrangement boosting maximum capacity
- Connection pipes are approximately 1.5m long
- Features a full width freezer compartment in lieu of the standard icebox

SPECIFICATIONS:

- Weight: 27.4kg
- Compressor: 170mm(h) x 270mm(w) x 155mm(d)
- Power Voltage: 12/24
- Nominal Input: 45w
- Current Consumption: 12V: 3.78A



VITRIFRIGO C110BT 108L 12-24V FREEZER WITH EXTERNAL COMPRESSOR, FITTING FRAME AND AIR LOCK

043908

FEATURES:

- Airlock locking system
- Positive door closure, to prevent unwanted openings
- Fast reversible opening: thanks to its smart design, it's now extremely quick and easy to operate
- Integrated "vent position" system, to keep the freezer door ajar, preventing the formation of unpleasant odours and mould when not in use.

SPECIFICATIONS:

- Capacity: 108L
- Dimensions: 525mm(w) x 767mm(h) x 523mm(d) + door (42mm)
- Power Voltage: 12/24V
- Compartments: 3
- Weight: 34kg
- Nominal Consumption: 52W



The Airlock closure system integrates 4 innovative solutions:

1) positive door closure, to prevent unwanted openings;

2) unique Double purpose mounting flange (optional), for both partial built-in (door outside) or total built-in (door inside);

3) fast reversible opening: thanks to its smart design, it's now extremely quick and easy to operate;

4) integrated "vent position" system, to keep the fridge door ajar, preventing the formation of unpleasant odours and mould when not in use.

VITRIFRIGO FRIDGES - INTERNAL COMPRESSOR STAINLESS STEEL



VITRIFRIGO C62IX STAINLESS STEEL 12/24V 62L FRIDGE FREEZER WITH STEELOCK

044008

Built in fridge/freezers suitable for RV and marine use complete with Steelock.

FEATURES:

- Steelock top locking system
- Total built-in mounting flange
- LED lighting

SPECIFICATIONS:

- 4.5L freezer compartment
- Dimensions: 513mm(w) x 535mm(h) x 550mm(d)
- Weight: 20kg
- Power Voltage: 12/24V
- Nominal Consumption: 40W



VITRIFRIGO C115IX STAINLESS STEEL 12/24V 115L FRIDGE FREEZER WITH STEELOCK

042426 - LEFT HAND HINGE NO FREEZER/CRISPER

042427 - LEFT HAND HINGE NO FREEZER

042428 - RIGHT HAND HINGE NO FREEZER

Built in fridge/freezers suitable for RV and marine use complete with Steelock.

FEATURES:

- Steelock top locking system
- Total built-in mounting flange
- LED lighting

SPECIFICATIONS:

- 17.1L Freezer compartment
- Overall Dimensions: 588mm(w) x 770mm(h) x 553mm(d)
- Cut out size: 543 (w) x 766 (h) x 533 (d)
- Weight: 30kg
- Power Voltage: 12/24V
- Nominal Consumption: 45W



VITRIFRIGO DP2600IX STAINLESS STEEL 2 DOOR FRIDGE/FREEZER 230 LITRE 12-24 VOLT BD-50 COMPRESSOR WITH FITTING FRAME AND STEELOCK

043983

These 2-door refrigerators have huge capacity and feature large separate freezer compartments for long term storage of frozen foods. The DP2600ix, has a flush mount surround for ease of installation and also has the Steelock catch system as standard equipment.

FEATURES:

- Reversible hinge
- Internal cooling unit
- LED light in freezer and fridge
- Super silent operation

SPECIFICATIONS:

- 60L freezer compartment
- Overall Dimensions: 1354mm(h) x 631mm(w) x 602mm(d)
- Cut out size: 1344 (w) x 595(h) x 602 (d)
- Weight: 62kg
- Nominal Consumption: 65W

VITRIFRIGO FRIDGES - EXTERNAL COMPRESSOR STAINLESS STEEL



VITRIFRIGO C42LX STAINLESS STEEL 42L 12/24V FRIDGE WITH STEELOCK

044193 - FRIDGE STEEL LOCK 12/24V

044977 - FRIDGE STEEL LOCK 2/24/240V

This 42 litre stainless steel refrigerator and freezer features Steelock locking system.

FEATURES:

- Steelock locking system
- Total built in mounting flange
- LED lighting

SPECIFICATIONS:

- 42 litre with 3.6l freezer
- Overall Dimensions: 443mm(w) x 535mm(h) x 379mm(d)
- Cut out size: 398(w) x 531 (h) x 379 (d)
- Weight: 17kg
- Nominal consumption: 31W



VITRIFRIGO C75 STAINLESS STEEL FRIDGE 75 LITRE 12-24 VOLT AND EXTERNAL COMPRESSOR WITH STEELOCK

043611 - C75LX FRIDGE ONLY FLUSH MOUNT

044192 - C75LX FRIDGE/FRZR WITH HOLDING PLATE

Built in fridge with external cooling unit which allows the compressor to be located in a cupboard or other convenient place with sufficient ventilation. Length of connection pipe is approx. 1.6m.

FEATURES:

- Fridge only
- 10.2l Freezer in F/F model

SPECIFICATIONS:

- Dimensions: 533mm(w) x 625mm(h) x 452mm(d)
- Cut out size: 488 (w) x 621 (h) x 452 (d)
- Weight: 23kg
- Power Voltage: 12/24V
- Nominal Consumption: 40W



VITRIFRIGO C130LX FRIDGE 130 LITRE 12-24 VOLT AND EXTERNAL COMPRESSOR WITH STEELOCK

043992

Built in fridge with external cooling unit which allows the compressor to be located in a cupboard or other convenient place with sufficient ventilation.

FEATURES:

- Steelock locking system
- Built in mounting flange
- LED light
- Connection pipes are approximately 1.5m long
- Features a full width freezer compartment in lieu of the standard icebox

SPECIFICATIONS:

- Freezer volume: 17.1l
- Weight: 31kg
- Dimensions: 588mm(w) x 770mm(h) x 555mm(d) inc door
- Cut out size: 543x766x555
- Power Voltage: 12/24
- Nominal consumption: 45W



VITRIFRIGO C180RFX 180 LITRE 12-24 VOLT STAINLESS STEEL FRIDGE ONLY AND EXTERNAL COMPRESSOR WITH STEELOCK

044567

Built in fridge with external cooling unit which allows the compressor to be located in a cupboard or other convenient place with sufficient ventilation.

FEATURES:

- Steelock locking system
- Built in mounting flange
- LED light
- Connection pipes are approximately 1.5m long

SPECIFICATIONS:

- Weight: 40kg
- Dimensions: 666mm(w) x 866mm(h) x 559mm(d) inc door
- Cut out size: 617 (w) x 856 (h) x 559 (d)
- Power Voltage: 12/24
- Nominal consumption: 45W



VITRIFRIGO DW360BT FRIDGE/DRAWER FREEZER X 2 301L STAINLESS STEEL 039501

Flagship Vitrifrigo model featuring a door fridge and twin drawer freezers with excellent access.

FEATURES:

- Integrally mounted twin compressor system ensures more consistent freezer temperatures
- Electronic LED thermostat

SPECIFICATIONS:

- Overall Dimensions: 1707mm(h) x 591mm(d) x 666mm(w)
- Cut out size: 1700 (h) x 550 (d) x 618 (w)
- Weight: 100kg
- Power Voltage: 12/24V
- Fridge Consumption: 3.75A
- Freezer Consumption: 5.08A
- 157L fridge/80L drawer freezer/64L drawer freezer
- Capacity: 301 litres



VITRIFRIGO DW180.2 DRAWER FRIDGE 144L STAINLESS STEEL 12/24V

033871 - DW180.2BT FREEZER/FREEZER
041541 - DW180.2BT FREEZER/FREEZER SLAM LOCK

044469 - DW180 FRIDGE/FREEZER 12/24/240V

044321 - DW180.2BT FR/FR STEELOCK 12/24/240V

044696 - DW180.DT FRIDGE 12/24/240V

044364 - DW180.2RF FRIDGE/FRIDGE

044320 - DW180.2RF FRIDGE/FRIDGE STEELOCK

044899 - DW180.2RF FRIDGE/FRIDGE STEELOCK

044961 - DW 180A STEEL LOCK

Elegant design with a number of configuration options. Steellock option shown.

FEATURES:

- 80L top drawer/ 64L bottom drawer
- Integrally mounted compressor system

SPECIFICATIONS:

- Dimensions: 590mm(d) x 857mm(h) x 617mm(d) + door 40mm
- Weight: 55kg
- Power Voltage: 12/24V
- Current Consumption: 12V 2.8A
- Capacity: 144 litres



VITRIFRIGO DW250BTX DRAWER FRIDGE/FREEZER 232L STAINLESS STEEL 12/24V

044687 - STEELOCK

Features top fridge with bottom drawer freezer available in two handle/mounting configurations.

FEATURES:

- Integrally mounted twin compressor system ensures more consistent freezer temperatures
- Electronic LED thermostat

SPECIFICATIONS:

- Overall Dimensions Steellock: 660mm(l) x 1330mm(h) x 593mm(d)
- Cut out: 618(w) x 1325 (h) x 550 (d)
- Weight: 65kg
- Power Voltage: 12/24V and 110/240V
- Current Consumption: 12V 2.8A + 3.0A (2 compressors)
- 157L fridge/75L drawer freezer
- Capacity: 232 litres



VITRIFRIGO DW100 DRAWER FRIDGE 95L STAINLESS STEEL 12/24V

039883 - DW100RF DRAWER FRIDGE

042538 - DW100BT DRAWER FREEZER STD PIN LOCK

041804 - DW100BT DRAWER FREEZER SLAM LOCK

044003 - DW100RFX DRAWER FRIDGE WITH STEELOCK

Compact, easy access with many configuration options. Steellock option shown.

FEATURES:

- Integrally mounted compressor system
- Electronic LED thermostat

SPECIFICATIONS:

- Dimensions: 526mm(l) x 543mm(h) x 591mm(d)
- Weight: 27kg
- Power Voltage: 12/24V
- Current Consumption: 12V 2.8A
- Capacity: 95 litres



VITRIFRIGO DW35 RFX STAINLESS STEEL 35L DRAWER FRIDGE 12/24V - 043967

35 litre drawer fridge.

SPECIFICATIONS:

- Dimensions: 440m(d) x 285mm(h) x 727mm(d)
- Weight: 24kg
- Power Voltage: 12/24V



VITRIFRIGO DW210 DRAWER FRIDGE 182L STAINLESS STEEL 12/24V

039881 - DW210RF FRIDGE/FRIDGERFX

039882 - DW210DT TOP FREEZER/FRIDGE SLAMLOCK DTX

044939 - DW210DR 2 TOP FREEZER/FRIDGE STEEL LOCK

039880 - DW210BTX FREEZER/FREEZER

042398 - DW210DXTX IM FREEZER/ICEMAKER+FR 240V

Elegant design with a number of configuration options. Steellock option shown.

FEATURES:

- Integrally mounted twin compressor system ensures more consistent freezer temperatures
- Electronic LED thermostat
- Icemaker only available in 110V or 240V

SPECIFICATIONS:

- Overall Dimensions: 740mm(w) x 873mm(h) x 630mm(d)
- Cut out: 691 (w) x 871 (h) x 630 (d)
- Weight: 60kg
- Power Voltage: 12/24V (110 or 240V Icemaker version)
- Current Consumption: 12V 4.4A
- 78L top drawer/ 104L bottom drawer
- Capacity: 182 litres



VITRIFRIGO DW70 DRAWER FRIDGE 75L STAINLESS STEEL 12/24V

034784 - DW70RFX FRIDGE ONLY STD PIN LOCK

041531 - DW70BTX IM FREEZER/ICEMAKER 240V

044187 - DW70 FREEZER WITH STEELOCK

044182 - DW70 FRIDGE ONLY WITH STEELOCK

Elegant design with a number of configuration options.

FEATURES:

- Integrally mounted compressor system
- Electronic LED thermostat
- Icemaker only available in 240V

SPECIFICATIONS:

- Dimensions: 608mm(l) x 449mm(h) x 520mm(d)
- Weight: 26kg
- Power Voltage: 12/24V (240V Icemaker version)
- Current Consumption: 12V 3.0A
- Capacity: 75 litres

DOMETIC FRIDGES



**DOMETIC FRIDGE 3 WAY 90 LITRE
RM2350
003187**

Manual control model absorption refrigerator for 12/240Vs and gas. Single-curved door model.

FEATURES:

- 3 way silent operation - LP Gas, 12V and 240V
- Magnetic door seal and travel latch which secures door during travel
- Automatic flame failure device shuts off gas if flame is extinguished
- Environmentally friendly - CFC and Freon free

SPECIFICATIONS:

- Weight: 29kg
- Overall Dimensions: 556mm(w) x 766mm(h) x 577mm(d)
- Capacity: 90L



**DOMETIC 3 WAY FRIDGE 120 LITRE
MANUAL ENERGY SELECTOR RM2453
003189**

FEATURES:

- 3 way silent operation - LP Gas, 12V and 240V
- Performance enhanced cooling units - designed and manufactured for harsh Australian conditions climate class "t"
- Environmentally friendly - CFC and Freon free
- Automatic flame failure device shuts off gas if flame is extinguished
- Magnetic door seal and travel latch secures door during travel

SPECIFICATIONS:

- Dimensions: 632mm(w) x 948mm(h) x 627mm(d)
- Weight: 39kg
- Capacity: 120L



**DOMETIC 3 WAY FRIDGE 150 LITRE
RM2553
003190**

FEATURES:

- 3 way silent operation - LP Gas, 12V and 240V
- Performance enhanced cooling units - designed and manufactured for harsh Australian conditions climate class "t"
- Environmentally friendly - CFC and Freon free
- Automatic flame failure device shuts off gas if flame is extinguished
- Magnetic door seal and travel latch which secures doors during travel

SPECIFICATIONS:

- Dimensions: 632mm(w) x 1104mm(h) x 627mm(d)
- Weight: 45kg
- Capacity: 150L



**DOMETIC FRIDGE 2 WAY 220 LITRE
RGE410
003194**

The Domestic RGE410 large capacity gas and electrical refrigerator/freezer has a total capacity of 220 litres including a separate frozen food compartment of 45 litres offering maximum storage volume.

FEATURES:

- 2 way silent operation - 240V and LP gas
- Performance enhanced cooling units - designed and manufactured for harsh Australian conditions climate class "T"
- Environmentally friendly - CFC and Freon free
- Automatic flame failure device shuts off gas if flame is extinguished
- Magnetic door seal and travel latch secures doors during travel

SPECIFICATIONS:

- Dimensions: 1612mm(h) x 592mm(w) x 623mm(d)
- Weight: 73kg
- Total Gross Volume: 220 Ltr
- Freezer Volume: 45 Ltr
- Energy Consumption: @ amb temp +25°C 3.9kWh/24h
- Max Input: 240V 325w
- Max Input: Gas (g/h) 21
- Voltage: 240V
- LP Gas
- Shelves: 4
- Total racks (inner door): 4



**DOMETIC WAECO CRX-140 135 LITRE
FRIDGE 12V/24V/240V
044317**

FEATURES:

- Custom built compressor
- Digital/LED interface
- Greater temperature control with LAC (Low Ambient Control)
- Drainage plug system for easy cleaning
- Better air-ventilation and durability of the hot side
- Ambient temperature driven Fan Speed to reduce noise
- Variable door mounts & hinges
- Door with double lock
- Installation frame (Standard or Flush Mount) accessory options

SPECIFICATIONS:

- Dimensions: 620mm(d) x 812mm(h) x 525mm(w)
- Weight: 30kg
- Capacity: 135l (11l freezer)



**DOMETIC 3 WAY FRIDGE 184 LITRE
RM4601
003193**

FEATURES:

- 3 way silent operation - LP Gas, 12V, 240V
- Performance enhanced cooling units
- Environmentally friendly - CFC and Freon free
- Automatic flame failure device
- Magnetic door seal and travel latch secures doors during travel
- Climate Class "t"

SPECIFICATIONS:

- Dimensions: 632mm(w) x 1427mm(h) x 627mm(d)
- Weight: 61.5kg
- Capacity: 184L



ENGEL FRIDGE 40 LITRE SR48F - BUILT IN
003199

Affordable, extremely compact built-in refrigerator that will provide more than adequate storage capacity when space is at a premium. Built-in 12V, 24V and 240V. Reversible door and replaceable door panel so you can customize your refrigerator to match your vehicle's interior. Turbo fan standard.

FEATURES:

- Interchangeable for left/right opening
- No exterior skin - frame type door with replaceable door panel
- 12V to 240V automatically selects mains power when connected

SPECIFICATIONS:

- External Dimensions: 423mm(w) x 531mm(h) x 510mm(d)
- Cut out dimensions: 385mm(w)x 518mm(h) x 447mm(d)
- Capacity: 40 litre
- 19KG



ENGEL BUILT IN FRIDGE 40 LITRE SB47F - 12/24V
003200

Affordable, extremely compact built-in refrigerator that will provide more than adequate storage capacity when space is at a premium. Built-in 12/24v only. Reversible door and replaceable door panel so you can customize your refrigerator to match your vehicle's interior. Turbo fan standard.

SPECIFICATIONS:

- External Dimensions: 531mm(h) x 423mm(w) x 510mm(d)
- Weight: 15kg
- DC Power Consumption: 0.5-2.5 Amps Max
- Power: 12/24 Volts DC only
- Capacity: 40 litres



ENGEL BUILT IN FRIDGE 57 LITRE SR70F 003201

Compact built in fridge with an area for frozen goods, to suit most campervans or yachts. Maximization of storage capacity allows you to separate beverages and perishables easily. Auto switching between 12/24V DC and 240V AC. Reversible door and replaceable door panel so you can customize your refrigerator to match your vehicle's interior. Turbo fan standard.

FEATURES:

- No exterior skin but with frame type door with replaceable door panel

SPECIFICATIONS:

- Dimensions: 506mm(w) x 530mm(h) x 586mm(d)
- Cut out dimensions: 467mm(w) x 518mm(h) x 526mm(d)
- Capacity: 57 litre



DOMETIC 3 WAY FRIDGE 190 LITRE RMDX25
044983

- Generous gross capacity of 190 l
- Dimensions: 525 x 622 x 1264 mm
- T-rated cooling unit is designed for excellent performance in all conditions
- Cooling unit is easy to service if required
- Twin 12 V ventilation fans ensure excellent performance in high ambient temperatures
- Automatic Energy Selection (AES)
- No moving parts results in completely silent operation



ENGEL FRIDGE FREE STANDING 80 LITRE ST90F
003204

Large capacity 80 litre free-standing fridge that incorporates a separate freezing compartment. Cleverly designed to fit into confined spaces in caravans and boats. Unique auto switching between 12/24V DC and 240V AC standard in most of Engel's uprights SR48F, SR70F. Reversible door and replaceable door panel so you can customize your refrigerator to match your vehicle's interior. Turbo fan standard.

FEATURES:

- Variable from 0.5 to 2.5 A maximum

SPECIFICATIONS:

- Dimensions: 531mm(w) x 786mm(h) x 579mm(d)
- Cut out: 505mm(d)
- Voltage: 240V AC/12V DC/24V DC
- Capacity: 80 litre
- 70L Fridge 10L Freezer



WAECO FRIDGE CRX-110 BUILT IN
050003

The Waeco CRX110 fridge freezer is one of the larger compressor refrigerators in the range – it still features all the usual high standard interior and exterior qualities as all the Waeco boat and caravan fridges. This particular refrigerator has a total 104 litre capacity which includes a 9.0 litre freezer compartment.

- Generous gross capacity of 109 l
- Dimensions: 520 x 745 x 558 mm
- Average power consumption of 50 W
- Variable Motor Speed Optimisation ensures excellent energy efficiency
- oCFC-free polyurethane foam provides excellent insulation
- Fully hermetic compressor with integrated control electronics
- Ambient temperature controlled fan speed to reduce noise

FRIDGE ACCESSORIES



CARAVAN FRIDGE VENT SCREEN 050021

improves the efficiency of your fridge on a hot day. 199gsm, 95% shadecloth.

SPECIFICATIONS:

- Size: 1900mm x 900mm
- Colour: silver/Grey
- Comes with pegs,ropes and sail track



SOLAR FRIDGE FAN - SOLAR PANEL 000685

This solar panel suits the Solar fridge fan (refer code 000684).



SOLAR FRIDGE FAN 000684

Solar powered exhaust fan increases the cooling efficiency of refrigerator by venting hot air from the coils.



FRIDGEMATE 12V FRIDGE FAN 000688

Increases cooling efficiency by up to 40% on hot days. Attaches to bottom of refrigerator compartment and blows into the coils and toward the top vent.



CAMEC FRIDGE BULLS EYE LEVEL 042670

Clear plastic level which can be used on any flat surface. Commonly used for levelling the 3 way fridge

FRIDGE SPARE PARTS

VITRIFRIGO SPARE PARTS

- 003040 - AIR 10 ELECTRONIC THERMOSTAT
- 044690 - STEEL LOCK 316 HANDLE
- 044691 - MIDDLE LOCK BRACKET
- 003009 - BD35/50F 12-24V ELECT CONT UNIT (DANFOSS)
- 039968 - BD35/50 MODULE ELECT DANFOSS AC/DC
- 041494 - BD35/BD50 ELEC CONTROLER AND SPEED VARIATION KIT
- 003003 - BD35F 12-24V COMPRESSOR
- 003014 - BD35F RESISTOR BLUE (12-24V - 3500RPM)
- 003004 - BD50 12-24V COMPRESSOR
- 043090 - BRK32PX DOOR WITH PUSH AND TURN LOCK
- 003140 - C110BT FRIDGE DOOR
- 003118 - C110BT MERONI914WMAGNET MAGNETIC FREEZER DOOR CATCH
- 034422 - C110BT S/S FREEZER DOOR
- 039989 - C110BT S/S SHELF KIT KIT (1 PAIR)
- 043234 - C115/C130 FREEZER DOOR PLASTIC INSULATED
- 041695 - C115/DP2600/5150-05 DOOR METAL RETAINER
- 003166 - C115/130L EVAPORATOR "U" SHAPE CURRENT VERSION
- 044892 - C130 BOTTOM COVER
- 034938 - C130L DRAIN TRAY R11263AS
- 044723 - C130L SS FRIDGE DOOR
- 003061 - C26/41 LID LOCK CLIP C1300 FREEZER DOOR CATCH
- 003043 - C26/45/60, BRK-35 T-STAT K50L3105
- 003132 - C30 AND DP150I DOOR
- 003168 - C41 MOUNTING BRACKET
- 003041 - C41 T-STAT E-TRONIC LED
- 003110 - C45 DRAIN TRAY HOLDER
- 003111 - C45 NAUTIC LOCK PLATE
- 003099 - C45 PLASTIC FREEZ LID
- 003114 - C45L TOP DR SHELF
- 039898 - C47 FRONT LOAD FRIDGE 47 LITRES V12/24
- 003105 - C60/75 MOUNT FOR DOOR TOP FIXING TO CABINET
- 003086 - C60/75 WIRE SHELF
- 039962 - C60/C115 BOTTLE STOPPER
- 003125 - C60/C75 FITTING FRAME
- 043528 - C60/C75L FREEZER DOOR
- 003017 - C60/C75L/C85I EVAPORATOR "U" SHAPE CURRENT PLASTIC FREEZER DOOR
- 003162 - C65, C41, C26 DIAL T-STAT EWPC901
- 043157 - C75 THERMOSTAT
- 003159 - C75L/C85 BOTTOM DR SHELF
- 003137 - C85I FRIDGE DOOR PLUS KIT SHELF R501.435
- 038555 - C85I TOP DOOR SHELF

- 003087 - C85I/900 WIRE SHELF
- 039966 - CL220V CONTACTS SPARE PARTS FOR ICEMAKER
- 003010 - D31370 FINNED CONDENSOR
- 003156 - DOOR UPPER HINGE BRACKET WITH TWO HOLES
- 003121 - DP150 FITTING FRAME
- 043263 - DP150 THERMOSTAT BLACK KNOB
- 036571 - DP150I 14023 DOOR LOCK
- 003042 - DP150I T-STAT K60-L2066
- 042169 - DP2600 BL FREEZER DR FOR NEW MODEL FRIDGES
- 042168 - DP2600 BL FRIDGE DR NEW MODEL FOR NEW MODEL FRIDGES
- 003082 - DP2600 DOOR SHELING (TOP) ALSO SUITS DP150
- 003104 - DP2600 DRAIN TRAY
- 003176 - DP2600 FESTOON 24V 3W GLOBE
- 003021 - DP2600 FR EVAPORATOR
- 043170 - DP2600 GLASS SHELF
- 041129 - DP2600 HINGE MANUFACT'D JAN14 TO JULY14
- 050005 - DP2600 KIT
- 003094 - DP2600 SS HINGE MANUFACT'D UP TO DEC 2013
- 003079 - DP2600 VEGETABLE TRAY
- 042884 - DP2600I FLANGE BLACK NEW FOR MID 2014 ON HINGES
- 042167 - DP2600I SS FRIDGE DR NEW FOR NEW MODEL FRIDGES
- 042881 - DP2600I/IX HINGE KIT NEW UPPER AND LOWER
- 042883 - DP2600IX FLANGE S/S NEW FOR MID 2014 ON HINGES
- 041415 - DP2600IX SS FREEZER DOOR SUIT NEW MODEL
- 043189 - DRAWER FRIDGE RIVET KIT 10 PIECE SLIDING DRIVERS
- 043238 - DRAWER STRIP LIGHT 4 PIN
- 043239 - DRAWER STRIP LIGHT 8 PIN
- 043240 - DRAWER STRIP LIGHT LENS
- 041396 - DW180 / DW70 VENT
- 039813 - DW180 BOTTLE STOPPER ANCHORAGE
- 033857 - DW180 DRAWER HANDLE R14025
- 038400 - DW180 EVAPORATOR PLATE FREEZER OR FRIDGE/FREEZER
- 038401 - DW180 EVAPORATOR PLATE FRIDGE ONLY
- 041534 - DW180 INSULATED BOTTOM DRAWER LINER
- 041105 - DW180 INSULATED LOWER DOOR FRONT
- 039115 - DW180 S/S DRAWER COVER
- 039956 - DW180 S/S SURFACE FLANGE
- 038339 - DW180 THERMOSTAT FRIDGE ONLY
- 039114 - DW180 TOP DRAWER LINER

- 036658 - DW180.2 DRAWER RUNNER
- 039958 - DW180/210 SX R-FRIDGE CLOSURE
- 040907 - DW180BT-DT DW70BT AND DW100BT R502.1018BT.S THERMOSTAT
- 042487 - DW180DT DRIP TRAY
- 043448 - DW180FX FIT FRAME OUTSIDE PIN LOCK
- 040910 - DW180RF, DW210RF 502.1018.S THERMOSTAT
- 044688 - DW180 INSULATED TOP FRONT
- 044689 - DW180/70 STAINLESS FRONT
- 044692 - DW180 STAINLESS FITTING FRAME
- 044693 - DW180/70 FITTING FRAME / VENT KIT
- 040308 - DW210 BT/DT THERMOSTAT FRIDGE AND FREEZER
- 040908 - DW210BT-DT R502.1023BT.S THERMOSTAT
- 040790 - DW250 SS SURFACE FLANGE R128229.1
- 038338 - DW70 FREEZER AND DW180 FRIDGE/FREEZER THERMOSTAT
- 038340 - DW70 THERMOSTAT FRIDGE ONLY
- 040909 - DW70RF, DW100RF R5021070.S THERMOSTAT

DOMETIC SPARE PARTS

- 043065 - CR140 FRIDGE WINTER KIT
- 003351 - FREEZE DOOR LH SPRING HOUSING
- 003352 - FREEZER DOOR RH SPRING HOUSING
- 003357 - FRIDGE RETAIN BAR DBL-394>711
- 003356 - FRIDGE RETAIN BAR SGL-394>711
- 016567 - FRIDGE VENT KIT 8 PIECE AS1625 + TP
- 038725 - LOWER FRIDGE VENT KIT NEW STYLE
- 016568 - TOP VENT INSERT
- 038887 - UPPER VENT AND FRAME N/S LESS INSERT
- 040380 - VENT FRAME AND GRILL REQUIRED FOR 3 WAY ABOVE 101L
- 016580 - VENT KIT ALI FLUE AND T-PCE TYPE A

WAECO SPARE PARTS

- 003314 - 25-60L CCF/CF FIXING KIT UNIVERSAL
- 003302 - CDF-35 CF-25 TO CF-60 CABLE RIGHT ANGLE
- 034992 - CF RANGE SP-38-AU2000B4 240V CABLE
- 003303 - CF18 CABLE 2M - 12/24V
- 003328 - CF25 TO CF60 72W MOBITRONIC 12/240V AC ADAPTOR
- 003304 - CF80-110 CABLE 1M 12/24V
- 003313 - CR110 STANDARD MOUNT FRAME
- 039295 - CR140 FLUSH MOUNT FRAME
- 039296 - CR140 STANDARD FRAME
- 034436 - CR50 FLUSH MOUNT FRAME
- 003311 - CR65 FLUSH MOUNT FIXING KIT



SMEV STAINLESS STEEL 4 BURNER GAS-ELECTRIC GRILL AND OVEN

040600

400 Series. Compact oven, grill and burner with mirror door ideally suited to caravan and recreational vehicle use. Flush mounted with your bench top to provide additional bench space when not in use.

FEATURES:

- 4 burner HOB 3 gas/1 electric
- Grill tray and oven rack
- Glass lid
- 12V electric ignition to burners and grill
- Flame failure safety device to all burners
- Flush mounting
- Stainless steel finish

SPECIFICATIONS:

- Dimensions: 489mm(w) x 515mm(d) x 651mm(h)



SMEV 4 BURNER GRILL GAS WITH MIRROR DOOR AND SAFETY CUT OFF

040601

400 Series. Compact grill and burner with mirror door ideally suited to caravan and recreational vehicle use. Flush mounted with your bench top to provide additional bench space when not in use.

FEATURES:

- 400 Series
- 4 burner HOB 3 gas / 1 electric
- Grill
- Glass lid
- 12V electric ignition to burners and grill

SMEV SPARE PARTS

- 039808 - SMEV 400 SERIES COOKER FRONT SIDE TRIM R/H BLK TRIM
- 039809 - SMEV 400 SERIES COOKER FRONT SIDE TRIM L/H BLK TRIM
- 002561 - SMEV 400 SERIES GLASS LID
- 035098 - SMEV 400 SERIES LH LID END
- 035099 - SMEV 400 SERIES RH LID END
- 036653 - SMEV 400 SERIES T/STAT CONTROL KCB0400220E00
- 002637 - SMEV 400/7000 SERIES OVEN WIRE SHELF



SMEV 2 BURNER/HOTPLATE STAINLESS STEEL DROP-IN WITH GLASS LID

040321

8000 Series stainless steel with glass fold-down lid and compact design. This model features flame failure protection on both burners, therefore if the flame blows out, the gas will stop flowing to that burner.

Each burner also has Piezo ignition which is operated at the push of a button.

FEATURES:

- The fold down glass lid gives added bench space when the stove is not being used
- Complete with mounting clamps that pull up to hold the stove in place

SPECIFICATIONS:

- Dimensions: 480mm(w) x 90mm(h) x 370mm(d)
- Gas inlet is female 1/4" BSP
- Nominal Gas Consumption: 15.6 Mj/h



SMEV 3 BURNER/HOTPLATE AND RIGHT HAND SINK WITH GLASS LIDS (NO TAP)

040853

Space saving stainless steel design with folding glass lids.

FEATURES:

- Stainless steel construction
- Flame failure safety device to all burners
- Modern, space saving design
- Separate opening glass lids to maximise bench space
- Includes mounting brackets

SPECIFICATIONS:

- Dimensions: 970mm(w) x 150mm(h) x 430mm(d)

040079 - SMEV 2014-002 LH S/S TRIM SQUARE FRONT

040078 - SMEV 2014-002 RH S/S TRIM SQUARE FRONT

039093 - SMEV 7000 GRILL THERMOSTAT

002855 - SMEV 2BNR DROP IN GLASS LID

002861 - SMEV 2/3BNR HOLD DOWN CATCH BLK

002863 - SMEV 2/3BNR PLASTIC SCREW COVER

002856 - SMEV 3BNR DROP IN GLASS LID

042539 - SMEV 3BNR ENAMELLED PAN SUPPORT SUIT



SMEV 3 BURNER DROP-IN HOTPLATE AND GLASS LID

040393

The 3 burner version of the Smev 8000 Series cookers compliments the matching stainless steel sink and oven.

FEATURES:

- Space saving design
- Practical glass lid sits flush
- Hot plate incorporates 12V electric ignition and flame failure safety device to all burners

SPECIFICATIONS:

- Dimensions: 560mm(w) x 440mm(d) x 90mm(h)



DOMETIC CRAMER COOK TOP 040264 - 2 BURNER COOK TOP

The Dometic Cramer hob features an integrated heat-resistant safety glass lid, detachable chromed pan supports, stainless steel burner caps, safety ignition system, recessed controls and a low profile rubber seal. If there are no pots on the hob, you can close the glass lid to gain additional work space - and protect the hob at the same time.

FEATURES:

- Safety ignition system
- Detachable pan supports
- Stainless steel burner caps

002623 - SMEV STOVE TRIVET RUBB GROMMET RIF:00181

042895 - SMEV D45 BURNER TOP AND BOTTOM TOP BLACK ENAMELLED W/SCREWS

042896 - SMEV D60 BURNER TOP AND BOTTOM TOP BLACK ENAMELLED W/SCREWS

STOVES AND COOKERS



CRAMER COMBI 3 BURNER HOB WITH SINK

043452

FEATURES:

- Safety ignition system
- Integrated heat-resistant safety glass lid
- Detachable pan supports - easy to clean
- Stainless steel burner caps

SPECIFICATIONS:

- Dimensions: 840mm(l) x 440mm(w) x 130mm(d)
- Tap not included



LIDO JUNIOR 2 BURNER AND GRILL

002721

044957

GAS HOSE 900MM

5/16 TO BSP 3/8

No flame arrest. Suitable for camping and outdoor use.

FEATURES:

- 2 burner and grill
- Stainless body with painted base and hinged lid

SPECIFICATIONS:

- Dimensions: 500mm(w) x 170mm(h) x 280mm(d) + gas fitting



LIDO JUNIOR 2 BURNER AND GRILL SUITABLE FOR RVS OR BOATS

040326

044957

GAS HOSE 900MM

5/16 TO BSP 3/8

Suitable for indoor use in caravans and motorhomes. Can also be used for camper trailer and outdoor kitchens.

FEATURES:

- 2 burner and grill
- Flame arrest on all burners
- Stainless steel body with painted base and hinged lid
- Hose and regulator required

SPECIFICATIONS:

- Dimensions: 500mm(w) x 170mm(h) x 280mm(d) + gas fitting
- Weight: 3.6kg



