

CLAUDETTE

Chemisier et robe-chemise classiques, avec manche montée, ourlet arrondi et deux plis plats au dos. Poches plaquées à la poitrine avec rabat (deux styles de poche inclus). La version robe (B) au-dessus du genou et inclut des poches plaquées supplémentaires, une ceinture à nouer et des passants permettent de souligner la taille.

tailles - sizes

F - GG

Classic button-up shirt and shirtdress, featuring set-in sleeves, two flat pleats at the back and a rounded hem. Patch pockets with flaps on the chest (two pocket styles included). The dress version (B) is above the knee and includes additional patch pockets, a tie belt and belt loops for waist definition.

MESURES DU CORPS (TAILLES JUNIORS) - BODY MEASUREMENTS (JUNIOR SIZES)

Âge approximatif - Approximate age		2	3	4	5	6	7	8	9	10	11	12	13
Tailles européennes - European sizes		92	98	104	112	119	127	135	142	146	150	152	155
TAILLE JALIE - JALIE SIZES		F	G	H	I	J	K	L	M	N	O	P	Q
	POITRINE CHEST/FULL BUST	20 1/2"	21 5/8"	22 3/4"	23 3/8"	24 3/8"	26"	27 1/8"	28 3/8"	29 3/8"	30"	31"	32"
		52 cm	55 cm	58 cm	61 cm	63 cm	66 cm	69 cm	71 cm	74 cm	76 cm	79 cm	81 cm
	TAILLE (PLUS FIN) WAIST (SMALLEST)	20 3/8"	21 1/8"	21 3/4"	22 1/4"	22 3/4"	23 1/8"	23 3/8"	24 1/4"	24 3/8"	25 1/2"	26 1/8"	26 3/4"
		53 cm	54 cm	55 cm	57 cm	58 cm	59 cm	60 cm	62 cm	63 cm	65 cm	66 cm	68 cm
	HANCHES (PLUS FORT) HIPS (FULLEST)	20 3/8"	22 1/8"	23 3/8"	24 3/8"	25 3/8"	27 1/8"	28 3/8"	29 3/8"	30 3/8"	32"	33 1/4"	34 1/2"
		53 cm	56 cm	59 cm	63 cm	66 cm	69 cm	72 cm	75 cm	78 cm	81 cm	85 cm	88 cm

TISSUS REQUIS - YARDAGE

Choisir la taille Jalie qui correspond à la mesure du buste. Choose the size closest to the bust/chest measurement.	45"	CHEMISIER (A) SHIRT (A)	1 3/4 yd	1 3/4 yd	1 3/4 yd	1 3/4 yd	1 3/4 yd	1 3/4 yd	2 yd	2 yd	2 yd	2 yd	2 1/4 yd	2 3/4 yd
		140 m	140 m	145 m	145 m	150 m	160 m	165 m	170 m	175 m	180 m	185 m	2.50 m	
	115 cm	ROBE (B) SHIRTDRESS (B)	2 yd	2 yd	2 1/4 yd	2 1/4 yd	2 1/2 yd	2 1/2 yd	2 3/4 yd	2 3/4 yd	2 3/4 yd	2 3/4 yd	3 yd	3 1/2 yd
		1.75 m	1.75 m	1.85 m	2.00 m	2.10 m	2.20 m	2.30 m	2.45 m	2.45 m	2.50 m	2.55 m	3.05 m	
58"	CHEMISIER (A) SHIRT (A)	1 1/4 yd	1 1/4 yd	1 1/4 yd	1 1/2 yd	1 1/2 yd	1 1/2 yd	1 1/2 yd	1 3/4 yd	1 3/4 yd	1 3/4 yd	1 3/4 yd	1 3/4 yd	1 3/4 yd
	1.00 m	1.05 m	1.10 m	1.20 m	1.25 m	1.30 m	1.35 m	1.40 m	1.45 m	1.50 m	1.55 m	1.60 m		
147 cm	ROBE (B) SHIRTDRESS (B)	1 1/2 yd	1 3/4 yd	1 3/4 yd	1 3/4 yd	1 3/4 yd	1 3/4 yd	2 yd	2 yd	2 yd	2 1/4 yd	2 1/4 yd	2 1/4 yd	
	1.35 m	1.40 m	1.45 m	1.50 m	1.55 m	1.60 m	1.65 m	1.75 m	1.80 m	1.85 m	1.90 m	2.00 m		

MESURES DU CORPS (TAILLES ADULTES) - BODY MEASUREMENTS (ADULT SIZES)

Prêt-à-porter APPROX. US size	XS (4)		S (6-8)		M (8-10)		L (12-14)		XL (16-18)			1X (18-20)		2X (22-24)		
Tailles euro - European sizes	34	36	38	40	42	44	46	48	50	52	54	56				
TAILLE JALIE - JALIE SIZES	R	S	T	U	V	W	X	Y	Z	AA	BB	CC	DD	EE	FF	GG
POITRINE CHEST/FULL BUST	32 3/8"	33 3/8"	34 3/8"	36"	37"	38"	39 3/8"	40 3/8"	41 1/2"	42 3/8"	44 1/4"	45 3/8"	47"	48 3/8"	49 3/4"	51 1/8"
	84 cm	86 cm	89 cm	91 cm	94 cm	97 cm	99 cm	102 cm	106 cm	109 cm	113 cm	116 cm	120 cm	123 cm	127 cm	130 cm
TAILLE (PLUS FIN) WAIST (SMALLEST)	27 3/8"	28"	28 3/8"	29 3/8"	30 3/8"	31 3/8"	32 3/8"	33 3/8"	35 3/8"	36 3/8"	38 3/8"	40"	41 1/2"	43"	44 1/2"	46 3/8"
	69 cm	71 cm	74 cm	76 cm	79 cm	81 cm	84 cm	86 cm	90 cm	94 cm	98 cm	102 cm	105 cm	109 cm	113 cm	117 cm
HANCHES (PLUS FORT) HIPS (FULLEST)	35 3/4"	37"	38"	39"	40"	41"	41 3/8"	42 3/8"	44 1/4"	45 3/8"	47"	48 3/8"	49 3/4"	51 1/8"	52 1/2"	53 3/8"
	91 cm	94 cm	97 cm	99 cm	102 cm	104 cm	107 cm	109 cm	113 cm	116 cm	120 cm	123 cm	127 cm	130 cm	134 cm	137 cm

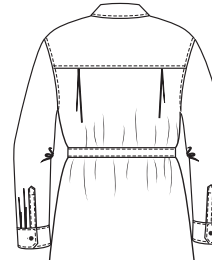
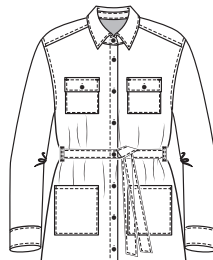
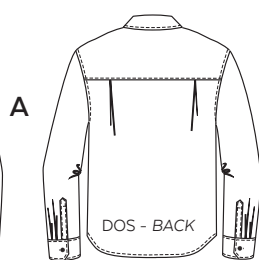
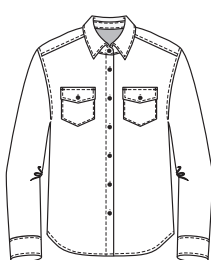
TISSUS REQUIS - YARDAGE

45"	CHEMISIER (A) SHIRT (A)	2 3/4 yd	2 3/4 yd	2 3/4 yd	3 yd	3 yd	3 yd	3 1/4 yd	3 1/4 yd	3 1/4 yd	3 1/4 yd	3 1/2 yd	3 1/2 yd	3 1/2 yd	3 1/2 yd	3 1/2 yd
	2.50 m	2.50 m	2.50 m	2.55 m	2.60 m	2.65 m	2.75 m	2.80 m	2.85 m	2.90 m	2.95 m	3.00 m	3.00 m	3.00 m	3.00 m	3.00 m
115 cm	ROBE (B) SHIRTDRESS (B)	3 1/2 yd	3 1/2 yd	3 1/2 yd	3 1/2 yd	3 3/4 yd	3 3/4 yd	4 yd	4 yd	4 yd	4 yd	4 yd	4 yd	4 3/4 yd	4 3/4 yd	4 3/4 yd
	3.05 m	3.05 m	3.05 m	3.20 m	3.30 m	3.40 m	3.45 m	3.55 m	3.60 m	3.60 m	3.60 m	3.60 m	4.15 m	4.15 m	4.15 m	4.15 m
58"	CHEMISIER (A) SHIRT (A)	2 yd	2 yd	2 yd	2 yd	2 yd	2 yd	2 1/4 yd	2 1/4 yd	2 1/4 yd	2 1/4 yd	2 3/4 yd	2 3/4 yd	2 3/4 yd	2 3/4 yd	2 3/4 yd
	1.65 m	1.75 m	1.75 m	1.80 m	1.80 m	1.80 m	1.90 m	1.90 m	2.00 m	2.35 m	2.40 m	2.45 m	2.45 m	2.50 m	2.50 m	
147 cm	ROBE (B) SHIRTDRESS (B)	2 1/4 yd	2 1/2 yd	2 1/2 yd	2 1/2 yd	2 3/4 yd	2 3/4 yd	2 3/4 yd	3 yd	3 yd	3 yd	3 yd	3 1/4 yd	3 1/4 yd	3 1/2 yd	3 1/2 yd
	2.05 m	2.10 m	2.15 m	2.20 m	2.35 m	2.45 m	2.45 m	2.55 m	2.55 m	2.65 m	2.70 m	2.75 m	2.85 m	2.90 m	3.00 m	3.10 m

TISSUS RECOMMANDÉ
RECOMMENDED
FABRICS

Tissus légers à moyens: popeline de coton, chambray, denim léger, lin, mélanges de lin, velours côtelé fin, flanelle.

Light to medium weight woven fabrics, cotton shirting, poplin, chambray, lightweight denim, linen, linen blends, baby corduroy, flannel.



MERCERIE - NOTIONS

BOUTONS 10-12 mm
3/8" - 1/2" BUTTONS

A	F - G	H - L	M - Y	Z - GG
	9	10	11	12
B	F - H	I - J	K - Y	Z - GG
	11	12	13	14

ENTOILAGE THERMOCOILLANT (LÉGER/MOYEN)
FUSIBLE INTERFACING (LIGHT/MEDIUM-WEIGHT)

A	F - K	L - GG
	50 cm (20")	75 cm (30")
B	F - N	O - GG
	75 cm (30")	1 m (40")



PRÊT À COUDRE // READY TO SEW
ressources de couture (1 cm / 3/8") incluses dans le patron
1 cm / 3/8" seam allowances included in the pattern



1704451



© 2024 LES PATRONS JALIE INC.
www.jalie.com
IMPRIMÉ AU CANADA / PRINTED IN CANADA

CLAUDETTE

Chemisier et robe-chemise classiques, avec manche montée, ourlet arrondi et deux plis plats au dos. Poches plaquées à la poitrine avec rabat (deux styles de poche inclus). La version robe (B) au-dessus du genou et inclut des poches plaquées supplémentaires, une ceinture à nouer et des passants permettent de souligner la taille.

tailles - sizes

DD-MM

Classic button-up shirt and shirtdress, featuring set-in sleeves, two flat pleats at the back and a rounded hem. Patch pockets with flaps on the chest (two pocket styles included). The dress version (B) is above the knee and includes additional patch pockets, a tie belt and belt loops for waist definition.

MESURES DU CORPS - MESURES DU CORPS

Prêt-à-porter APPROX. US size		1X (20)	2X (22-24)		3X (26-28)		4X (30-32)		5X (34-36)			
Tailles euro - European sizes		52	54	56	58	60	62	64	66			
TAILLE JALIE - JALIE SIZES		DD	EE	FF	GG	HH	II	JJ	KK	LL	MM	
	▼ POITRINE CHEST/FULL BUST	47"	48 3/8"	49 3/4"	51 1/8"	53 1/8"	55 1/8"	57 1/8"	59"	61"	63"	
	■ TAILLE (PLUS FIN) WAIST (SMALLEST)	41 1/2"	43"	44 1/2"	46 1/8"	48 1/2"	51"	53 1/2"	56"	58 1/2"	61"	
	▲ HANCHES (PLUS FORT) HIPS (FULLEST)	49 3/4"	51 1/8"	52 1/2"	53 3/8"	56"	58"	60"	62 1/8"	64 1/8"	66 1/8"	
		TISSUS REQUIS - YARDAGE										
Choisir la taille Jalie (lettre) qui correspond aux buste. Choose the size closest to the bust measurement.	45"	CHEMISIER (A) SHIRT (A)	3 1/2 yd 3.00 m	3 1/2 yd 3.00 m	3 1/2 yd 3.00 m	3 1/2 yd 3.00 m	4 yd 3.45 m	4 yd 3.45 m	4 yd 3.55 m	4 yd 3.60 m	4 1/4 yd 3.70 m	4 1/4 yd 3.80 m
	115 cm	ROBE (B) SHIRTDRESS (B)	4 3/4 yd 4.15 m	4 3/4 yd 4.15 m	4 3/4 yd 4.15 m	4 3/4 yd 4.15 m	5 yd 4.55 m	5 1/4 yd 4.60 m	5 1/4 yd 4.70 m	5 1/4 yd 4.75 m	5 1/4 yd 4.80 m	5 1/2 yd 4.90 m
	58"	CHEMISIER (A) SHIRT (A)	2 3/4 yd 2.45 m	2 3/4 yd 2.45 m	2 3/4 yd 2.50 m	2 3/4 yd 2.50 m	3 yd 2.55 m	3 yd 2.60 m	3 yd 2.65 m	3 yd 2.70 m	3 1/4 yd 2.75 m	3 1/4 yd 2.85 m
	147 cm	ROBE (B) SHIRTDRESS (B)	3 1/4 yd 2.85 m	3 3/4 yd 2.90 m	3 1/2 yd 3.00 m	3 1/2 yd 3.10 m	3 1/2 yd 3.20 m	3 3/4 yd 3.30 m	4 yd 3.45 m	4 yd 3.55 m	4 yd 3.65 m	4 1/4 yd 3.75 m

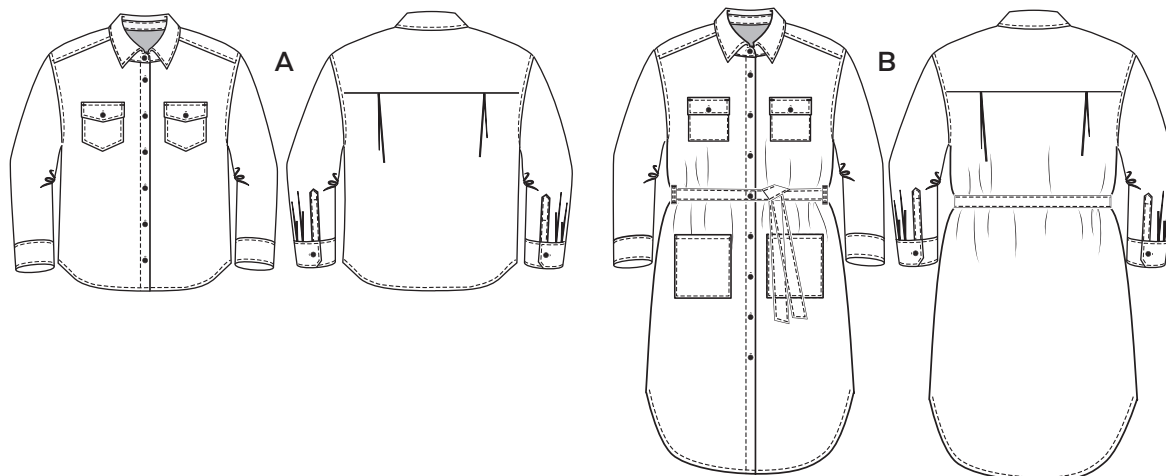
TISSUS RECOMMANDÉ
RECOMMENDED FABRICS

Tissés légers à moyens, tels que la popeline de coton, le chambray, le satin, le denim léger à moyen, le lin, les mélanges de lin, le velours côtelé fin, et le flanelle.

Light to medium weight woven fabrics, cotton shirting, poplin, chambray, sateen, lightweight to midweight denim, linen, linen blends, baby corduroy, flannel.

DOS - BACK

DOS - BACK



MERCERIE - NOTIONS

BOUTONS DE 10-12 mm
3/8" - 1/2" BUTTONS

A	DD - GG
	12
B	DD - GG
	14

ENTOILAGE THERMOCOLLANT
FUSIBLE INTERFACING

1 m (40")



PRÊT À COUDRE // READY TO SEW

Valeurs de couture de 1 cm (3/8") incluses dans le patron
1 cm (3/8") seam allowances included in the pattern

Jalie
PATRONS DE COUTURE
SEWING PATTERNS

© 2024 LES PATRONS JALIE INC.

www.jalie.com

FAIT AU CANADA / MADE IN CANADA