

Patron de maillot à manche montée et encolure cache-coeur. A: Manche longue B: Mancheron. Découpe empire et couture à la taille pour permettre l'insertion de différents styles de jupes. Compatible avec les jupes 4237A (disponible en PDF sur le site de Jalie) pour transformer en robe.

Sewing pattern for a surplice neck leotard with set-in sleeve. A: Long sleeve B: Cap sleeve. The seam under the bust (empire waist style) and the waist seam allows you to add different skirt styles for a dance or skating dress. The pattern is compatible with the 4237A skirt pack available on the Jalie website.

MESURES DU CORPS (TAILLES JUNIORS) - BODY MEASUREMENTS (JUNIOR SIZES)

Âge approximatif - Approximate age		2	3	4	5	6	7	8	9	10	11	12	13
Tailles européennes - European sizes		92	98	104	112	119	127	135	142	146	150	152	155
TAILLE JALIE - JALIE SIZES		F	G	H	I	J	K	L	M	N	O	P	Q
	POITRINE CHEST/FULL BUST	20 1/2"	21 1/2"	22 3/4"	23 3/4"	24 3/4"	26"	27 1/2"	28 3/4"	29 3/4"	30"	31"	32"
	TAILLE (PLUS FIN) WAIST (SMALLEST)	20 3/8"	21 3/8"	21 3/4"	22 3/4"	22 3/4"	23 3/8"	23 5/8"	24 3/4"	24 7/8"	25 1/2"	26 1/8"	26 3/4"
	HANCHES (PLUS FORT) HIPS (FULLEST)	20 7/8"	22 1/2"	23 3/8"	24 3/8"	25 3/8"	27 1/8"	28 3/8"	29 3/8"	30 7/8"	32"	33 1/4"	34 1/2"
	TRONC TORSO / GIRTH	35"	36 3/8"	38 3/8"	40"	41 3/8"	43 3/4"	44 7/8"	46 7/8"	48 7/8"	51"	53"	55"
<p>TISSUS REQUIS - YARDAGE</p>													
<p>58" 147 cm</p>	MODÈLE A (MANCHE LONGUE) VIEW A (LONG SLEEVE)	3/4 yd	3/4 yd	1 1/4 yd	3/4 yd	3/4 yd	1 yd	1 yd	1 yd	1 yd	1 yd	1 yd	1 yd
	MODÈLE B (MANCHERON) VIEW B (CAP SLEEVE)	3/4 yd	3/4 yd	1 1/4 yd	3/4 yd	3/4 yd	1 yd	1 yd	1 yd	1 yd	1 yd	1 yd	1 yd

Choisir la taille Jalie qui correspond à la mesure du buste et des hanches. Ajuster en longueur.
Choose the size closest to the bust and hips measurements. Adjust for length.

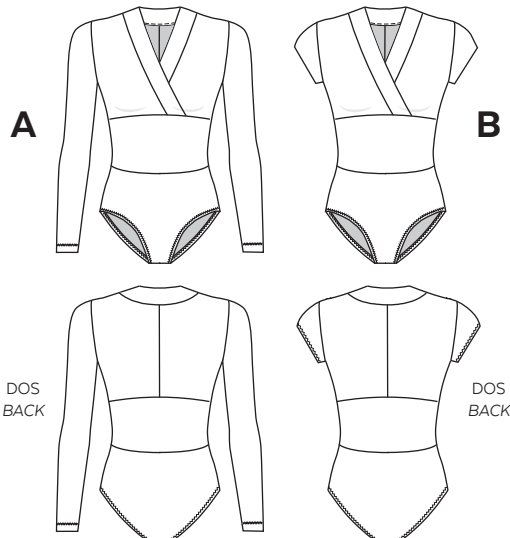
MESURES DU CORPS (TAILLES ADULTES) - BODY MEASUREMENTS (ADULT SIZES)

Prêt-à-porter APPROX. US size	XS (4)		S (6-8)		M (8-10)		L (12-14)		XL (16-18)		1X (18-20)		2X (22-24)			
Tailles euro - European sizes	34	36	38	40	42	44	46	48	50	52	54	56				
TAILLE JALIE - JALIE SIZES	R	S	T	U	V	W	X	Y	Z	AA	BB	CC	DD	EE	FF	GG
POITRINE CHEST/FULL BUST	32 7/8"	33 3/8"	34 7/8"	36"	37"	38"	39 3/8"	40 3/8"	41 1/2"	42 7/8"	44 1/4"	45 3/8"	47"	48 3/8"	49 3/4"	51 1/8"
TAILLE (PLUS FIN) WAIST (SMALLEST)	27 3/8"	28"	28 3/8"	29 3/8"	30 3/8"	31 3/8"	32 3/8"	33 3/8"	35 3/8"	36 3/8"	38 3/8"	40"	41 1/2"	43"	44 1/2"	46 3/8"
HANCHES (PLUS FORT) HIPS (FULLEST)	35 3/4"	37"	38"	39"	40"	41"	41 3/8"	42 3/8"	44 1/4"	45 3/8"	47"	48 3/8"	49 3/4"	51 1/8"	52 1/2"	53 3/8"
TRONC TORSO / GIRTH	57"	59"	59 3/8"	60 3/4"	60 3/8"	61 3/8"	62"	62 3/8"	63 1/2"	64 1/2"	65 3/8"	66 3/8"	67 3/4"	68 3/8"	69 3/8"	70 3/8"
<p>TISSUS REQUIS - YARDAGE</p>																
<p>58" 147 cm</p>	MODÈLE A (MANCHE LONGUE) VIEW A (LONG SLEEVE)	1 yd	1 yd	1 1/4 yd	1 3/4 yd	1 3/4 yd	1 3/4 yd	1 3/4 yd	2 yd	2 yd	2 yd	2 yd	2 yd	2 1/4 yd	2 1/4 yd	2 1/4 yd
	MODÈLE B (MANCHERON) VIEW B (CAP SLEEVE)	1 yd	1 yd	1 1/4 yd	1 1/4 yd	1 1/4 yd	1 1/4 yd	1 1/4 yd	1 1/2 yd	1 1/2 yd	1 3/4 yd	1 3/4 yd	1 3/4 yd	1 3/4 yd	1 3/4 yd	1 3/4 yd

TISSUS RECOMMANDÉS
RECOMMENDED FABRICS

Tricot léger à moyen avec spandex et au minimum 50% d'extensibilité dans la largeur et la longueur

Light- to medium-weight knit with spandex and at least 50% stretch in the width and length



50% EXTENSIBILITÉ MINIMALE REQUISE (dans la largeur et la longueur)
MINIMUM STRETCH REQUIRED (in the width and length)

10 cm → 15 cm
(4" → 6")



MERCERIE - NOTIONS

2 X	ÉLASTIQUE 1 CM 3/8" ELASTIC
F - J	0.85 m (34")
K - P	1.00 m (40")
Q - S	1.10 m (44")
T - Y	1.20 m (48")
Z - GG	1.50 m (60")

4349M

MAILLOTS ENCOLURE CACHE-COEUR - SURPLICE NECK LEOTARD

EMMA

Patron de maillot à manche montée et encolure cache-coeur. A: Manche longue B: Mancheron. Découpe empire et couture à la taille pour permettre l'insertion de différents styles de jupes. Compatible avec les jupes 4237A (disponible en PDF sur le site de Jalie) pour transformer en robe.

tailles - sizes

DD-MM

Sewing pattern for a surplice neck leotard with set-in sleeve. A: Long sleeve B: Cap sleeve. The seam under the bust (empire waist style) and the waist seam allows you to add different skirt styles for a dance or skating dress.
The pattern is compatible with the 4237A skirt pack available on the Jalie website.

MESURES DU CORPS - MESURES DU CORPS

Prêt-à-porter <u>APPROX.</u> US size		1X (20-22)		2X (22-24)		3X (26-28)		4X (30-32)		5X (34-36)			
Tailles euro - European sizes		52		54		56		58		60			
TAILLE JALIE - JALIE SIZES		DD	EE	FF	GG	HH	II	JJ	KK	LL	MM		
	▼	POITRINE CHEST/FULL BUST		47"	48 3/8"	49 3/4"	51 1/2"	53 3/8"	55 3/8"	57 3/8"	59"	61"	63"
	■	TAILLE (PLUS FIN) WAIST (SMALLEST)		41 1/2"	43"	44 1/2"	46 3/8"	48 1/2"	51"	53 1/2"	56"	58 1/2"	61"
	▲	HANCHES (PLUS FORT) HIPS (FULLEST)		49 3/4"	51 3/8"	52 1/2"	53 3/8"	56"	58"	60"	62 3/8"	64 3/8"	66 3/8"
	●	TRONC TORSO / GIRTH		67 3/4"	68 3/4"	69 3/8"	70 3/8"	71 3/8"	73 3/8"	74 3/8"	76 3/8"	77 3/8"	79 3/8"
TISSUS REQUIS - YARDAGE													
Choisir la taille Jalie (lettre) qui correspond au buste et aux hanches. Ajuster pour la longueur. Choose the size closest to the bust and hips measurement. Adjust for length.	58" 147 cm	MANCHES LONGUES LONG SLEEVE		2 yd	2 1/4 yd	2 1/4 yd	2 1/4 yd	2 1/4 yd	2 1/4 yd	2 1/4 yd	2 1/2 yd	2 1/2 yd	
		MANCHERON CAP SLEEVE		1.80 m	1.85 m	1.85 m	1.90 m	2.00 m	2.00 m	2.05 m	2.05 m	2.10 m	2.15 m
				1 3/4 yd	1 3/4 yd	1 3/4 yd	1 3/4 yd	1 3/4 yd	1 3/4 yd	2 yd	2 yd	2 yd	
				1.40 m	1.40 m	1.45 m	1.45 m	1.45 m	1.45 m	1.60 m	1.65 m	1.70 m	1.75 m

TISSUS RECOMMANDÉS
RECOMMENDED FABRICS

Tricot léger à moyen avec spandex et au minimum 50% d'extensibilité dans la largeur et la longueur

Light- to medium-weight knit with spandex and at least 50% stretch in the width and length

50% EXTENSIBILITÉ MINIMALE REQUISE (dans la largeur et la longueur)
MINIMUM STRETCH REQUIRED (in the width and length)

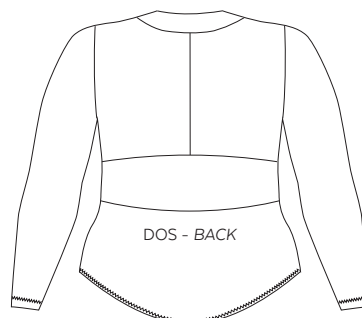
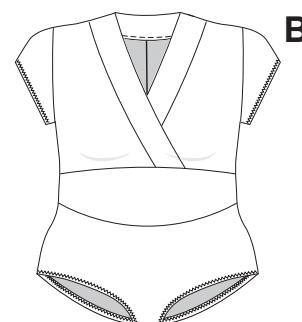
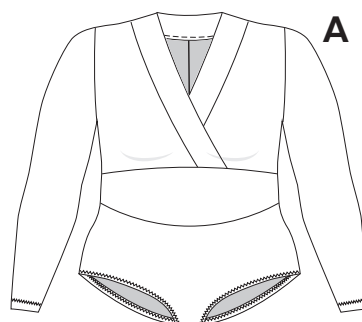
10 cm → 15 cm
(4" → 6")



MERCERIE - NOTIONS

ÉLASTIQUE 1 CM
3/8" ELASTIC

1.80 m (72")



PRÊT À COUDRE // READY TO SEW
Valeurs de couture (6 mm / 1/4") incluses dans le patron
6 mm / 1/4" seam allowances included in the pattern

Jalie
PATRONS DE COUTURE
SEWING PATTERNS

© 2023 LES PATRONS JALIE INC.

www.jalie.com

FAIT AU CANADA / MADE IN CANADA