

Cardigan ample à manche longue raglan. Finition avec bande large au devant. Deux options: Style chandail, sans poches (modèle A) et tunique (modèle B), avec poches plaquées.

tailles - sizes

Loose-fitting cardigan with long raglan sleeve. Finished with a wide band at the front. Two length options: sweater length, without pockets (view A) and tunic-length, with pockets (view B).

F - GG

MESURES DU CORPS (TAILLES JUNIORS) - BODY MEASUREMENTS (JUNIOR SIZES)

Âge approximatif - Approximate age		2	3	4	5	6	7	8	9	10	11	12	13	
Tailles européennes - European sizes		92	98	104	112	119	127	135	142	146	150	152	155	
TAILLE JALIE - JALIE SIZES		F	G	H	I	J	K	L	M	N	O	P	Q	
	POITRINE CHEST/FULL BUST	20 ½"	21 ¾"	22 ¾"	23 ¾"	24 ¾"	26"	27 ¾"	28 ¾"	29 ¾"	30"	31"	32"	
	TAILLE (PLUS FIN) WAIST (SMALLEST)	20 ¾"	21 ¾"	21 ¾"	22 ¾"	22 ¾"	23 ¾"	23 ¾"	24 ¾"	24 ¾"	25 ½"	26 ¾"	26 ¾"	
	HANCHES (PLUS FORT) HIPS (FULLEST)	20 ¾"	22 ¾"	23 ¾"	24 ¾"	25 ¾"	27 ¾"	28 ¾"	29 ¾"	30 ¾"	32"	33 ¼"	34 ½"	
	TRONC TORSO / GIRTH	35"	36 ¾"	38 ¾"	40"	41 ¾"	43 ¼"	44 ¾"	46 ¾"	48 ¾"	51"	53"	55"	
		89 cm	93 cm	97 cm	102 cm	106 cm	110 cm	114 cm	119 cm	124 cm	129 cm	135 cm	140 cm	
<p>TISSUS REQUIS - YARDAGE</p>														
Choisir la taille Jalie qui correspond à la mesure du buste. Choose the size closest to the bust measurement.	58" 147 cm	MODÈLE A VIEW A	¾ yd	1 yd	1 yd	1 yd	1 ¼ yd	1 ¼ yd	1 ¼ yd	1 ¼ yd	1 ½ yd	1 ½ yd	1 ½ yd	1 ½ yd
		MODÈLE B VIEW B	¾ yd	1 yd	1 yd	1 ¼ yd	1 ¼ yd	1 ¼ yd	1 ½ yd	1 ½ yd	1 ½ yd	1 ¾ yd	1 ¾ yd	1 ¾ yd
			0.60 m	0.70 m	0.85 m	0.90 m	0.95 m	1.05 m	1.10 m	1.10 m	1.15 m	1.15 m	1.15 m	1.30 m
			0.65 m	0.75 m	0.90 m	1.05 m	1.10 m	1.10 m	1.15 m	1.30 m	1.35 m	1.40 m	1.45 m	1.50 m

MESURES DU CORPS (TAILLES ADULTES) - BODY MEASUREMENTS (ADULT SIZES)

Prêt-à-porter APPROX. US size	XS (4)		S (6-8)		M (8-10)		L (12-14)		XL (16-18)		1X (18-20)		2X (22-24)			
Tailles euro - European sizes	34	36	38	40	42	44	46	48	50	52	54	56				
TAILLE JALIE - JALIE SIZES	R	S	T	U	V	W	X	Y	Z	AA	BB	CC	DD	EE	FF	GG
POITRINE CHEST/FULL BUST	32 ¾"	33 ¾"	34 ¾"	36"	37"	38"	39 ¾"	40 ¾"	41 ½"	42 ¾"	44 ¼"	45 ¾"	47"	48 ¾"	49 ¾"	51 ¾"
TAILLE (PLUS FIN) WAIST (SMALLEST)	27 ¾"	28"	28 ¾"	29 ¾"	30 ¾"	31 ¾"	32 ¾"	33 ¾"	35 ¾"	36 ¾"	38 ¾"	40"	41 ½"	43"	44 ½"	46 ¾"
HANCHES (PLUS FORT) HIPS (FULLEST)	35 ¾"	37"	38"	39"	40"	41"	41 ¾"	42 ¾"	44 ¼"	45 ¾"	47"	48 ¾"	49 ¾"	51 ¾"	52 ½"	53 ¾"
TRONC TORSO / GIRTH	57"	59"	59 ¾"	60 ¾"	60 ¾"	61 ¾"	62"	62 ¾"	63 ½"	64 ½"	65 ¾"	66 ¾"	67 ¾"	68 ¾"	69 ¾"	70 ¾"
		145 cm	150 cm	152 cm	153 cm	155 cm	156 cm	158 cm	159 cm	161 cm	164 cm	166 cm	169 cm	171 cm	173 cm	178 cm
<p>TISSUS REQUIS - YARDAGE</p>																
58" 147 cm	MODÈLE A VIEW A	1 ½ yd	1 ¾ yd	1 ¾ yd	1 ¾ yd	1 ¾ yd	2 yd	2 yd	2 yd	2 yd	2 yd	2 yd	2 yd	2 yd	2 yd	2 ½ yd
	MODÈLE B VIEW B	1 ¾ yd	2 yd	2 yd	2 yd	2 yd	2 yd	2 yd	2 ¼ yd	2 ¼ yd	2 ¼ yd	2 ¼ yd	2 ¼ yd	2 ¼ yd	2 ¼ yd	2 ¾ yd
		1.30 m	1.40 m	1.40 m	1.50 m	1.50 m	1.65 m	1.65 m	1.65 m	1.70 m	1.70 m	1.75 m	1.75 m	1.75 m	1.75 m	2.20 m
		1.60 m	1.65 m	1.70 m	1.70 m	1.70 m	1.75 m	1.75 m	1.80 m	1.85 m	1.90 m	2.00 m	2.00 m	2.00 m	2.05 m	2.50 m

TISSUS RECOMMANDÉS
RECOMMENDED FABRICS

Tricot moyen (tricot chandail, ponte di roma, molleton, tricot double) avec 30% d'extensibilité dans la largeur et la longueur.

Medium-weight knit (ponte di roma, sweatshirt fleece, scuba, double knit, sweater knit) with 30% stretch across the grain and length.

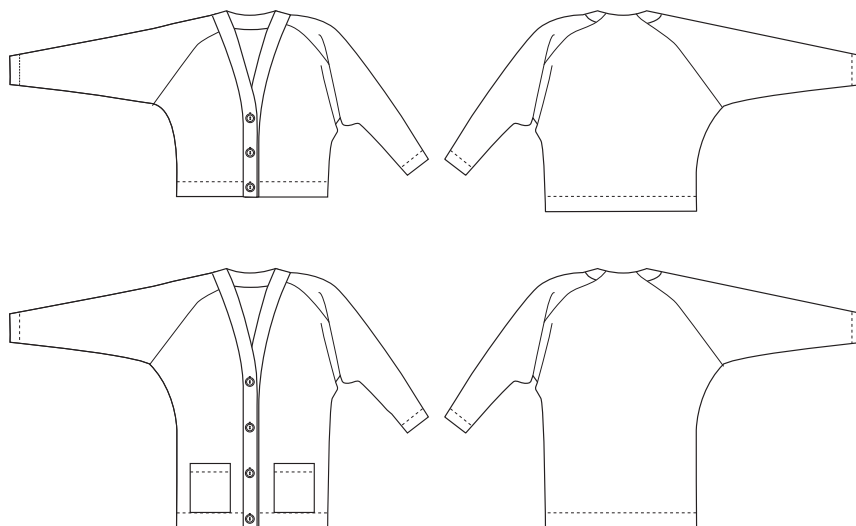
MERCERIE - NOTIONS

BOUTONS (FACULTATIF)
BUTTONS (OPTIONAL)

	F - H Ø 15 - 20 mm	I - L Ø 25 - 25 mm	M - GG Ø 25 - 30 mm
A	2	3	
B	3	4	

ENTOILAGE TRICOT THERMOCOILLANT
FUSIBLE KNIT INTERFACING

18" (45 cm)



30% EXTENSIBILITÉ MINIMALE REQUISE (dans la largeur et la longueur)
MINIMUM STRETCH REQUIRED (in the width and length)

10 cm → 13 cm
(4" → 5 1/8")



4242

CARDIGAN RAGLAN - RAGLAN CARDIGAN

KARINE

Cardigan ample à manche longue raglan. Finition avec bande large au devant. Deux options: Style chandail, sans poches (modèle A) et tunique (modèle B), avec poches plaquées.

tailles - sizes

DD-MM

Loose-fitting cardigan with long raglan sleeve. Finished with a wide band at the front. Two length options: sweater length, without pockets (view A) and tunic-length, with pockets (view B).

MESURES DU CORPS - MESURES DU CORPS

Prêt-à-porter APPROX. US size		1X (20-22)		2X (22-24)		3X (26-28)		4X (30-32)		5X (34-36)		
Tailles euro - European sizes		52	54	56	58	60	62	64	66			
TAILLE JALIE - JALIE SIZES		DD	EE	FF	GG	HH	II	JJ	KK	LL	MM	
	POITRINE CHEST/FULL BUST	47"	48 3/8"	49 3/4"	51 1/8"	53 1/8"	55 1/8"	57 1/8"	59"	61"	63"	
	TAILLE (PLUS FIN) WAIST (SMALLEST)	41 1/2"	43"	44 1/2"	46 1/8"	48 1/2"	51"	53 1/2"	56"	58 1/2"	61"	
	HANCHES (PLUS FORT) HIPS (FULLEST)	49 3/4"	51 1/8"	52 1/2"	53 3/8"	56"	58"	60"	62 1/2"	64 1/8"	66 1/8"	
	TRONC TORSO / GIRTH	67 3/4"	68 3/4"	69 3/8"	70 1/8"	71 1/8"	73 3/8"	74 3/8"	76 3/8"	77 3/8"	79 3/8"	
TISSUS REQUIS - YARDAGE												
Choisir la taille Jalie (lettre) qui correspond au buste. Choose the size closest to the bust measurement.		MODÈLE A VIEW A	2 yd	2 yd	2 yd	2 1/2 yd	2 1/2 yd	2 1/2 yd	2 3/4 yd	2 3/4 yd	2 3/4 yd	2 3/4 yd
		MODÈLE B VIEW B	2 1/4 yd	2 1/4 yd	2 1/4 yd	2 3/4 yd	2 3/4 yd	2 3/4 yd	3 yd	3 yd	3 yd	3 yd
			1.75 m	1.75 m	1.75 m	2.20 m	2.20 m	2.20 m	2.30 m	2.30 m	2.30 m	2.30 m
			2.00 m	2.05 m	2.05 m	2.50 m	2.50 m	2.50 m	2.55 m	2.55 m	2.55 m	2.55 m

30% EXTENSIBILITÉ MINIMALE REQUISE (dans la largeur et la longueur)
MINIMUM STRETCH REQUIRED (in the width and length)

10 cm → 13 cm
(4" → 5 1/8")



TISSUS RECOMMANDÉS - RECOMMENDED FABRICS

Tricot moyen (tricot chandail, ponte di Roma, molleton, tricot double) avec 30% d'extensibilité dans la largeur et la longueur.

Medium-weight knit (ponte di roma, sweatshirt fleece, scuba, double knit, sweater knit) with 30% stretch across the grain and length.

MERCERIE - NOTIONS

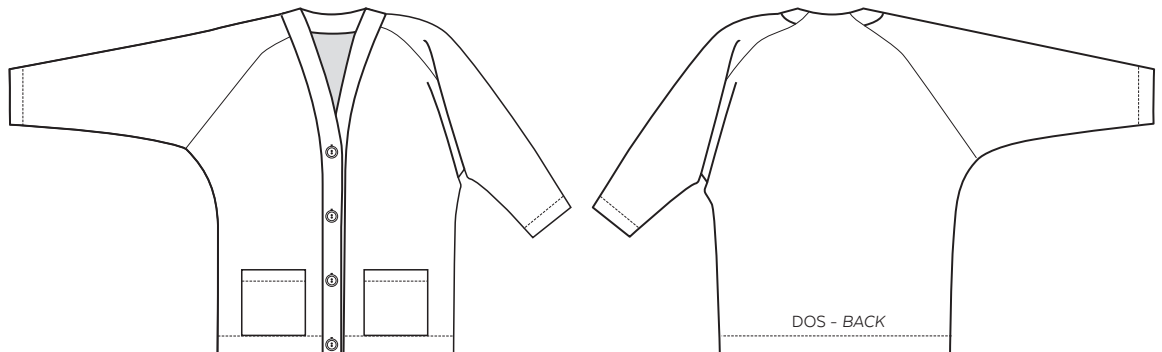
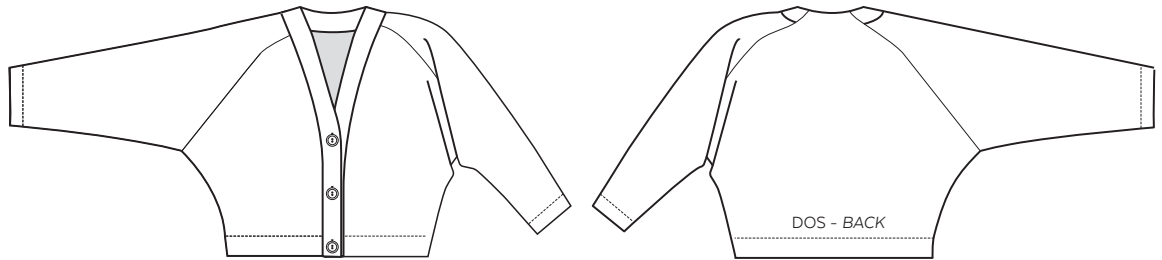
BOUTONS (FACULTATIF)
BUTTONS (OPTIONAL)

DD - MM
Ø 25 - 30 mm

A	3
B	4

ENTOILAGE TRICOT THERMOCOLLANT
FUSIBLE KNIT INTERFACING

18" (45 cm)



PRÊT À COUDRE // READY TO SEW
Valeurs de couture 6 mm (1/4") incluses dans le patron
6 mm (1/4") seam allowances included in the pattern

Jalie
PATRONS DE COUTURE
SEWING PATTERNS

© 2022 LES PATRONS JALIE INC.
www.jalie.com
FAIT AU CANADA / MADE IN CANADA