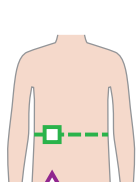

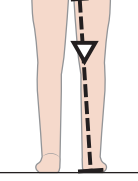
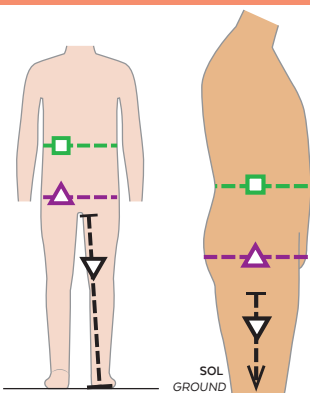


MESURES DU CORPS (ENFANTS ET ADOS) - BODY MEASUREMENTS (CHILDREN AND TEENS)

Âge approximatif - Approximate age	2	3	4	5	6	7	8	9	10	11	12	13
Tailles européennes - European sizes	92	98	104	112	119	127	135	142	146	150	152	155
TAILLE JALIE - JALIE SIZES	F	G	H	I	J	K	L	M	N	O	P	Q
 TAILLE (PLUS FIN) WAIST (SMALLEST)	20 3/8"	21 3/8"	21 3/4"	22 1/4"	22 3/4"	23 3/8"	23 3/8"	24 3/8"	25"	25 3/4"	26 3/8"	27 3/8"
 HANCHES (PLUS FORT) HIPS (FULLEST)	20 3/8"	22 3/8"	23 3/8"	24 3/8"	25 3/8"	27 3/8"	28 3/8"	29 3/8"	30 3/8"	31 3/8"	32 3/8"	33 3/8"
 ENTREJAMBE (AU SOL) INSEAM (TO THE FLOOR)	13 3/8"	15"	16 1/2"	18 3/8"	19 3/8"	21 3/8"	23 3/8"	25 3/4"	26 3/8"	28"	29 1/2"	31 3/8"



Choisir la taille Jalie (lettre) qui correspond à la mesure des hanches. Ajuster à la taille si nécessaire.



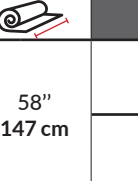
Choose the Jalie size (letter) closest to the hips measurement. Adjust for waist if necessary.



TISSUS REQUIS - YARDAGE

58" 147 cm	SHORT SHORTS	3/4 yd	3/4 yd	3/4 yd	3/4 yd	3/4 yd	3/4 yd	3/4 yd	3/4 yd	3/4 yd	3/4 yd	3/4 yd	1 yd	1 yd
	DOUBLURE LINING	1/2 yd	1/2 yd	1/2 yd	1/2 yd	1/2 yd	1/2 yd	1/2 yd	3/4 yd	3/4 yd	3/4 yd	3/4 yd	3/4 yd	3/4 yd
		0.50 m	0.50 m	0.55 m	0.55 m	0.55 m	0.60 m	0.60 m	0.65 m	0.65 m	0.65 m	0.65 m	0.70 m	0.70 m
		0.30 m	0.30 m	0.30 m	0.35 m	0.35 m	0.45 m	0.45 m	0.50 m	0.55 m	0.55 m	0.55 m	0.60 m	0.65 m

MESURES DU CORPS (ADULTES) - BODY MEASUREMENTS (ADULTS)

Prêt-à-porter APPROX. US size	XS (28-30)			S (30-32)			M (32-35)			L (36-40)			1X (40-44)		2X (46-50)													
Tailles euro APPROX. Euro sizes	38			40			42			44			46		48		50		52		54		56		58		60	
TAILLE JALIE - JALIE SIZES	R	S	T	U	V	W	X	Y	Z	AA	BB	CC	DD	EE	FF	GG												
 TAILLE (PLUS FIN) WAIST (SMALLEST)	28"	28 3/8"	29 1/2"	30 3/4"	31 1/2"	32 3/8"	33 1/2"	34 3/8"	36 1/4"	37 3/8"	39 3/8"	41"	42 1/2"	44 3/8"	47 3/8"	50"												
 HANCHES (PLUS FORT) HIPS (FULLEST)	32 3/8"	33 1/2"	34 3/8"	35 3/8"	36 3/8"	37 3/8"	38 3/8"	39 3/8"	40 1/2"	41 3/8"	42 1/2"	43 3/8"	44 3/8"	46 3/8"	47 3/8"	48 3/8"												
 ENTREJAMBE (AU SOL) INSEAM (TO THE FLOOR)	32 3/8"	33 3/8"	33 3/8"	33 3/8"	33 3/8"	33 3/8"	33 3/8"	33 3/8"	32 3/4"	32 3/8"	32 3/8"	31 3/4"	31 1/2"	31 3/8"	31 1/4"	31 3/8"												



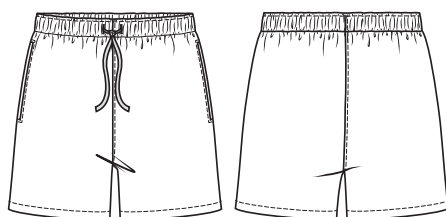
TISSUS REQUIS - YARDAGE

58" 147 cm	SHORT SHORTS	1 yd	1 yd	1 1/2 yd	1 1/2 yd	1 1/2 yd	1 1/2 yd	1 1/2 yd	1 1/2 yd	1 1/2 yd	1 1/2 yd	1 1/2 yd	1 1/2 yd	1 1/2 yd	1 1/2 yd	1 1/2 yd	1 1/2 yd
	DOUBLURE LINING	1 yd	1 yd	1 yd	1 yd	1 yd	1 yd	1 yd	1 yd	1 yd	1 yd	1 yd	1 yd	1 yd	1 yd	1 yd	1 yd
		0.70 m	0.75 m	1.15 m	1.15 m	1.15 m	1.20 m	1.20 m	1.20 m	1.25 m	1.25 m	1.25 m	1.30 m	1.30 m	1.30 m	1.30 m	
		0.70 m	0.75 m	0.75 m	0.75 m	0.75 m	0.75 m	0.75 m	0.85 m	0.85 m	0.85 m	0.85 m	0.85 m	0.85 m	0.85 m	0.85 m	

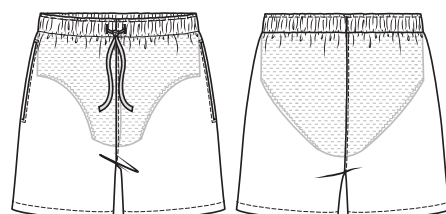
TISSUS RECOMMANDÉS  
RECOMMENDED FABRICS

SHORT:  
Nylon, microfibre  
DOUBLURE:  
Filet athlétique souple et doux sur la peau

SHORTS:  
Nylon, microfiber, board shorts fabric  
LINING:  
Soft (athletic) mesh



DOS - BACK



MERCERIE - NOTIONS

CORDON - DRAWSTRING		ÉLASTIQUE 32mm - 1/4" ELASTIC	
F - L	1 m (40")	F - H	55 cm (22")
M - GG	1.70 m (67")	ÉLASTIQUE 38mm - 1/2" ELASTIC	
ÉLASTIQUE 6 mm - 1/4" ELASTIC		I - S	70 cm (28")
F - R	1 m (40")	T - GG	1.20 m (48")
S - GG	1.40 m (56")		



VICTOR

Short de baignade avec taille élastique et cordon (facultatif). Poches à la couture côté et doublure en filet. Facile à coudre.

tailles - sizes

Swim shorts with elasticized waistband, optional drawstring, pockets at side seam, and mesh lining. Easy to make.

DD - MM

## MESURES DU CORPS - MESURES DU CORPS

Prêt-à-porter APPROX. US size

1X (42-44)

2X (46-50)

3X (52-54)

4X (56-58)

5X (60-62)

Tailles euro APPROX. European sizes

52

54

56

58

60

62

64

66

68

70

72

TAILLE JALIE - JALIE SIZES

DD

EE

FF

GG

HH

II

JJ

KK

LL

MM

TAILLE NATURELLE  
NATURAL WAIST

42 ½ "

44 ½ "

47 ½ "

50 "

52 "

54 "

56 "

58 "

60 "

62 "

HANCHES (PLUS FORT)  
HIPS (FULLEST)

44 ½ "

45 ½ "

47 ½ "

48 ½ "

50 ½ "

52 ½ "

54 ½ "

57 "

59 "

61 "

ENTREJAMBE (AU SOL)  
INSEAM (TO THE FLOOR)

31 1/8 "

30 ¾ "

30 ½ "

30 1/8 "

29 ¾ "

29 ½ "

29 1/8 "

29 ¾ "

29 ½ "

29 ¼ "



## TISSUS REQUIS - YARDAGE

60"  
150 cmSHORT  
SHORTS

1 ½ yd

1 ½ yd

1 ½ yd

1 ½ yd

1 ¾ yd

1 ¾ yd

1 ¾ yd

2 yd

2 yd

2 yd

DOUBLURE  
LINING

1 yd

1 yd

1 yd

1 yd

1 yd

1 yd

1 yd

1 yd

1 1/4 yd

1 1/4 yd

Mesurer la taille à l'endroit où le pantalon sera porter.  
Choisir la taille Jalie correspondant à cette mesure.

Measure the waist where the pants will be worn. Choose the Jalie size that corresponds to that measurement.

## TISSUS RECOMMANDÉS

## RECOMMENDED FABRICS

## SHORT:

Nylon, microfibre

## DOUBLURE:

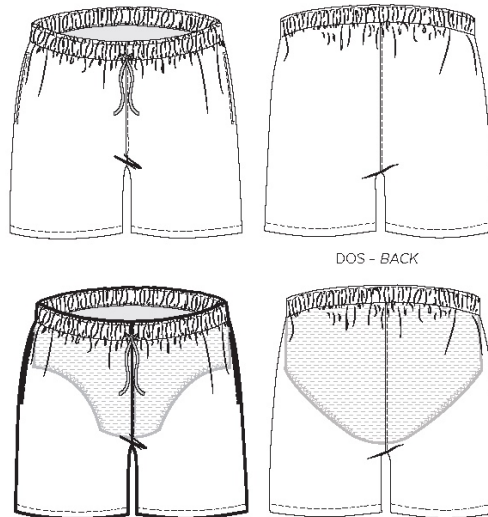
Filet athlétique souple et doux sur la peau

## SHORTS:

Nylon, microfiber,  
board shorts fabric

## LINING:

Soft (athletic) mesh



## MERCERIE NOTIONS

CORDON - DRAWSTRING

DD-MM

2 m (78")

ÉLASTIQUE 6 mm - 1/4" ELASTIC

DD-MM

1.70 m (67")

ÉLASTIQUE 38mm - 1 1/2" ELASTIC

DD-MM

1.45 m (56")

PRÊT À COUDRE // READY TO SEW

Valeurs de couture (1 cm / ¾") incluses dans le patron  
1 cm / ¾" seam allowances included in the pattern