

MARTIN

Pantalon d'intérieur et caleçon boxeur sans couture au milieu dos pour plus de confort. Taille élastique, fausse braguette et poche appliquée au dos. Un patron idéal pour débuter en couture.

tailles - sizes

Relaxed-fit pants and boxers with elastic waist, faux fly, rear patch pocket.

F - GG

This pattern has no center back seam, for more comfort. A great project for beginners.

MESURES DU CORPS (ENFANTS ET ADOS) - BODY MEASUREMENTS (CHILDREN AND TEENS)

Âge approximatif - Approximate age		2	3	4	5	6	7	8	9	10	11	12	13
Tailles européennes - European sizes		92	98	104	112	119	127	135	142	146	150	152	155
TAILLE JALIE - JALIE SIZES		F	G	H	I	J	K	L	M	N	O	P	Q
<p>Choisir la taille Jalie (lettre) qui correspond à la mesure des hanches. Ajuster à la taille si nécessaire. Choose the Jalie size (letter) closest to the hips measurement. Adjust for waist if necessary.</p>	TAILLE (PLUS FIN) WAIST (SMALLEST)	20 7/8"	21 3/8"	21 3/4"	22 1/4"	22 3/4"	23 3/8"	23 3/8"	24 3/8"	25"	25 3/4"	26 3/8"	27 3/8"
	HANCHES (PLUS FORT) HIPS (FULLEST)	53 cm	54 cm	55 cm	57 cm	58 cm	59 cm	60 cm	62 cm	64 cm	65 cm	67 cm	69 cm
	ENTREJAMBE (AU SOL) INSEAM (TO THE FLOOR)	13 3/8"	15"	16 1/2"	18 3/8"	19 3/8"	21 3/8"	23 3/8"	25 3/4"	26 3/8"	28"	29 1/2"	31 3/8"
TISSU REQUIS - YARDAGE													
58" 147 cm	CALEÇON BOXEUR BOXER SHORTS	1/2 yd 0.35 m	1/2 yd 0.35 m	1/2 yd 0.35 m	1/2 yd 0.45 m	1/2 yd 0.45 m	3/4 yd 0.50 m	3/4 yd 0.50 m	3/4 yd 0.55 m	3/4 yd 0.55 m	3/4 yd 0.60 m	3/4 yd 0.60 m	1 yd 0.75 m
	PANTALON PANTS	1 yd 0.70 m	1 yd 0.70 m	1 yd 0.85 m	1 yd 0.85 m	1 1/4 yd 0.95 m	1 1/4 yd 1.00 m	1 1/4 yd 1.10 m	1 1/4 yd 1.10 m	1 1/4 yd 1.10 m	1 1/2 yd 1.15 m	1 1/2 yd 1.30 m	1 3/4 yd 1.40 m
43" 105 cm	CALEÇON BOXEUR BOXER SHORTS	3/4 yd 0.55 m	3/4 yd 0.60 m	3/4 yd 0.60 m	3/4 yd 0.65 m	3/4 yd 0.65 m	1 yd 0.70 m	1 yd 0.75 m	1 yd 0.90 m	1 yd 0.90 m	1 1/4 yd 1.00 m	1 1/4 yd 1.10 m	1 1/2 yd 1.15 m
	PANTALON PANTS	1 yd 0.95 m	1 1/4 yd 1.10 m	1 1/2 yd 1.25 m	1 3/4 yd 1.40 m	1 3/4 yd 1.60 m	2 yd 1.70 m	2 yd 1.80 m	2 1/4 yd 1.90 m	2 1/4 yd 2.05 m	2 1/2 yd 2.15 m	2 1/2 yd 2.25 m	2 3/4 yd 2.40 m

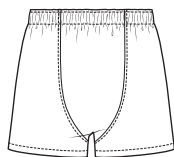
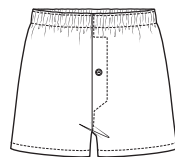
MESURES DU CORPS (ADULTES) - BODY MEASUREMENTS (ADULTS)

Prêt-à-porter APPROX. US size	XS (28-30)			S (30-32)			M (32-35)			L (36-40)			1X (40-44)		2X (46-50)														
Tailles euro - European sizes	38			40			42			44			46			48		50		52		54		56		58		60	
TAILLE JALIE - JALIE SIZES	R	S	T	U	V	W	X	Y	Z	AA	BB	CC	DD	EE	FF	GG													
TAILLE (PLUS FIN) WAIST (SMALLEST)	28"	28 3/8"	29 1/2"	30 3/4"	31 1/2"	32 3/8"	33 1/2"	34 3/8"	36 3/4"	37 3/4"	39 3/8"	41"	42 1/2"	44 3/8"	47 3/8"	50"													
HANCHES (PLUS FORT) HIPS (FULLEST)	32 3/8"	33 1/2"	34 3/8"	35 3/8"	36 3/8"	37 3/8"	38 3/8"	39 3/8"	40 1/2"	41 3/8"	42 1/2"	43 3/4"	44 1/2"	46 3/8"	47 3/4"	48 3/8"													
ENTREJAMBE (AU SOL) INSEAM (TO THE FLOOR)	32 3/8"	33 3/8"	33 3/8"	33 3/8"	33 3/8"	33 3/8"	33 3/8"	33 3/8"	32 3/4"	32 1/2"	32 3/8"	31 3/4"	31 1/2"	31 3/8"	31 1/4"	31 1/8"													
TISSU REQUIS - YARDAGE																													
58" 147 cm	CALEÇON BOXEUR BOXER SHORTS	1 yd 0.75 m	1 yd 0.75 m	1 yd 0.85 m	1 yd 0.85 m	1 yd 0.85 m	1 yd 0.90 m	1 yd 0.90 m	1 1/4 yd 0.95 m	1 1/4 yd 1.00 m	1 1/4 yd 1.05 m	1 1/4 yd 1.05 m	1 1/4 yd 1.05 m	1 1/2 yd 1.10 m	1 3/4 yd 1.20 m	1 3/4 yd 1.45 m													
	PANTALON PANTS	1 3/4 yd 1.50 m	1 3/4 yd 1.60 m	2 yd 1.70 m	2 1/4 yd 1.85 m	2 1/4 yd 2.05 m	2 1/2 yd 2.10 m	2 1/2 yd 2.10 m	2 1/2 yd 2.15 m	2 3/4 yd 2.40 m	2 3/4 yd 2.40 m	2 3/4 yd 2.40 m	2 3/4 yd 2.40 m	2 3/4 yd 2.40 m	2 3/4 yd 2.40 m	2 3/4 yd 2.40 m	3 1/4 yd 2.85 m												
43" 105 cm	CALEÇON BOXEUR BOXER SHORTS	1 1/2 yd 1.15 m	1 1/2 yd 1.15 m	1 1/2 yd 1.25 m	1 1/2 yd 1.25 m	1 1/2 yd 1.25 m	1 1/2 yd 1.30 m	1 1/2 yd 1.30 m	1 1/2 yd 1.30 m	1 1/2 yd 1.30 m	1 1/2 yd 1.30 m	1 1/2 yd 1.30 m	1 1/2 yd 1.35 m	1 3/4 yd 1.40 m	2 1/4 yd 1.85 m	2 1/4 yd 1.85 m													
	PANTALON PANTS	2 3/4 yd 2.40 m	2 3/4 yd 2.50 m	3 yd 2.55 m	3 yd 2.55 m	3 yd 2.60 m	3 yd 2.60 m	3 yd 2.60 m	3 yd 2.65 m	3 yd 2.65 m	3 1/4 yd 2.75 m	3 1/4 yd 2.80 m	3 1/4 yd 2.80 m	3 1/4 yd 2.80 m	3 1/4 yd 2.85 m	3 1/4 yd 2.85 m	3 1/2 yd 3.05 m												

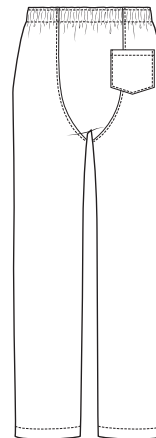
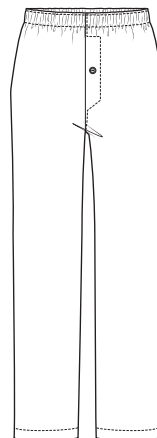
TISSUS RECOMMANDÉS  
RECOMMENDED FABRICS

Coton léger, popeline, flanelle de coton, flannelette, finette

Lightweight cotton, poplin cotton flannel, flannelette,



DOS - BACK



DOS - BACK

MERCERIE - NOTIONS

F - H	ÉLASTIQUE 25 mm - 1" ELASTIC	60 cm (24")
I - O	ÉLASTIQUE 32 mm - 1 1/4" ELASTIC	70 cm (28")
P - GG	ÉLASTIQUE 38 mm - 1 1/2" ELASTIC	130 cm (52")
BOUTON 12 mm (facultatif) 1/2" BUTTON (optional)		1X



PRÊT À COUDRE // READY TO SEW  
Valeurs de couture 1 cm / (3/8") incluses dans le patron  
1 cm (3/8") seam allowances included in the pattern



5004132



© 2021 LES PATRONS JALIE INC.  
www.jalie.com  
IMPRIMÉ AU CANADA / PRINTED IN CANADA

MARTIN

Pantalon d'intérieur et caleçon boxeur sans couture au milieu dos pour plus de confort. Taille élastique, fausse braguette et poche appliquée au dos. Un patron idéal pour débiter en couture.

tailles - sizes

Relaxed-fit pants and boxers with elastic waist, faux fly, rear patch pocket. This pattern features has no center back seam, for more comfort. A great project for beginners.

DD - GG

## MESURES DU CORPS - MESURES DU CORPS

Prêt-à-porter APPROX. US size		1X (42-44)		2X (46-50)		3X (52-54)		4X (56-58)		5X (60-62)		
Tailles euro - European sizes		52	54	56	58	60	62	64	66	68	70	72
TAILLE JALIE - JALIE SIZES		DD	EE	FF	GG	HH	II	JJ	KK	LL	MM	
<p>SOL GROUND</p>	<b>TAILLE NATURELLE</b> NATURAL WAIST	42 ½ "	45 "	47 ½ "	50 "	52 "	54 "	56 "	58 "	60 "	62 "	
	<b>HANCHES (PLUS FORT)</b> HIPS (FULLEST)	44 ½ "	45 7/8 "	47 ¾ "	48 7/8 "	50 7/8 "	52 7/8 "	54 7/8 "	57 "	59 "	61 "	
	<b>FOURCHE TOTALE</b> TOTAL CROTCH	32 ¾ "	33 ¾ "	34 ¾ "	35 ¾ "	36 ¾ "	37 ¾ "	38 ¾ "	29 ¾ "	29 ½ "	29 ⅝ "	
	<b>ENTREJAMBE (AU SOL)</b> INSEAM (TO THE FLOOR)	31 ½ "	30 ¾ "	30 ½ "	30 ⅝ "	29 ¾ "	29 ½ "	29 ⅝ "	29 ¾ "	29 ½ "	29 ⅝ "	
<b>TISSUS REQUIS - YARDAGE</b>												
Mesurer la taille à l'endroit où le pantalon sera porter. Choisir la taille Jalie correspondant à cette mesure.  Measure the waist where the pants will be worn. Choose the Jalie size that corresponds to that measurement.	58"	<b>CALEÇON</b> BOXERS	1 ¼ yd 1.10 m	1 ½ yd 1.20 m	1 ¾ yd 1.45 m	1 ¾ yd 1.45 m	1 ¾ yd 1.45 m	1 ¾ yd 1.50 m	1 ¾ yd 1.50 m	1 ¾ yd 1.60 m	1 ¾ yd 1.60 m	1 ¾ yd 1.60 m
	147 cm	<b>PANTALON</b> PANTS	2 ¾ yd 2.40 m	2 ¾ yd 2.40 m	2 ¾ yd 2.40 m	3 ¼ yd 2.85 m	3 ¼ yd 2.85 m	3 ¼ yd 2.85 m	3 ¼ yd 2.85 m	3 ¼ yd 2.85 m	3 ¼ yd 2.85 m	3 ¼ yd 2.85 m
43"	<b>CALEÇON</b> BOXERS	1 ½ yd 1.35 m	1 ¾ yd 1.40 m	2 ¼ yd 1.85 m	2 ¼ yd 1.85 m	2 ¼ yd 2.00 m	2 ¼ yd 2.00 m	2 ½ yd 2.10 m	2 ½ yd 2.20 m	2 ½ yd 2.20 m	2 ½ yd 2.20 m	2 ¾ yd 2.30 m
	105 cm	<b>PANTALON</b> PANTS	3 ¾ yd 2.80 m	3 ¾ yd 2.85 m	3 ¾ yd 2.85 m	3 ½ yd 3.05 m	3 ¾ yd 3.25 m	3 ¾ yd 3.30 m	4 yd 3.45 m	4 yd 3.60 m	4 yd 3.65 m	4 ¼ yd 3.70 m

**TISSUS RECOMMANDÉS**  
RECOMMENDED FABRICS

Coton léger, popeline, flanelle de coton, flanellette, finette

Lightweight cotton, poplin, cotton flannel, flannelette,

## MERCERIE - NOTIONS

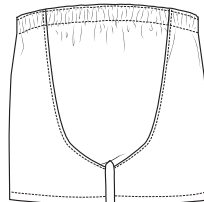
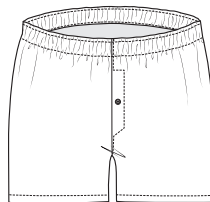
ÉLASTIQUE 38 mm  
1 ½" ELASTIC

DD-GG 130 cm (52")

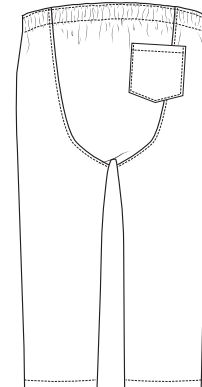
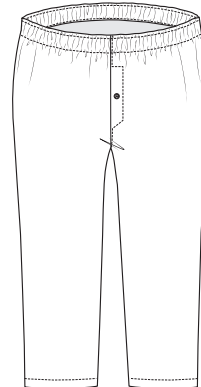
HH-MM 160 cm (63")

BOUTTON 12 mm (facultatif)  
½" BUTTON (optional)

1 X



DOS - BACK



DOS - BACK



PRÊT À COUDRE // READY TO SEW  
Valeurs de couture (1 cm / ⅜") incluses dans le patron  
1 cm (⅜") seam allowances included in the pattern