

GENEVIÈVE

Jupe sous le genou ou à mi-mollet, avec bande de taille élastique (au nombril), poches à la couture côté et pochette optionnelle qui peut être portée à la taille. A: Jupe boutonnée au milieu devant B: Jupe fermée au devant C: Pochette à la taille.

28
tailles - sizes

Below-the-knee or midi skirt with in-seam pockets, elasticized waistband (sits at natural waist) and optional waist pouch.
A: Button front B: Regular (closed) front C: Pouch with ties and belt loop to wear with the skirt.

MESURES DU CORPS (FILLES) - BODY MEASUREMENTS (GIRLS)

Âge approximatif - Approximate age	2	3	4	5	6	7	8	9	10	11	12	13
Tailles européennes - European sizes	92	98	104	112	119	127	135	142	146	150	152	155
TAILLE JALIE - JALIE SIZES	F	G	H	I	J	K	L	M	N	O	P	Q
	1 TOUR DE TAILLE NATURAL WAIST	20"	20 ½"	21"	21 ½"	22"	22 ½"	23"	23 ¾"	24 ½"	25 ¼"	26 ½"
	2 TOUR DES HANCHES FULL HIPS	22"	23"	24"	25"	26"	27"	28"	29 ½"	30 ½"	32"	34 ½"
	3 ENTREJAMBE (JUSQU'AU SOL) INSEAM (TO THE FLOOR)	13"	14 ½"	16"	18"	19 ½"	21"	23"	24"	25 ½"	26 ½"	28"

TISSU REQUIS - YARDAGE

Tissé léger/moyen (moyen pour la pochette) qui se repasse bien: lin, coton, challis, twill, tencel Light- to mid-weight fabrics (mid-weight for the pouch) with nice drape and that presses well: linen, challis, tencel twill	A/B (INCL. POCHE/ POUCH)	45"	SOUS LE GENOU BELOW THE KNEE	1 ¼ yd	1 ¼ yd	1 ½ yd	1 ½ yd	1 ½ yd	1 ¾ yd	1 ¾ yd	1 ¾ yd	2 yd	2 yd	2 ¼ yd	2 ¼ yd
				1.05 m	1.10 m	1.15 m	1.25 m	1.35 m	1.40 m	1.45 m	1.60 m	1.65 m	1.75 m	1.85 m	1.90 m
	115 cm	MI-MOLLET MID-CALF	1 ½ yd	1 ¾ yd	1 ¾ yd	1 ¾ yd	2 yd	2 yd	2 ¼ yd	2 ¼ yd	2 ½ yd	2 ½ yd	2 ½ yd	2 ¾ yd	2 ¾ yd
			1.30 m	1.40 m	1.45 m	1.60 m	1.70 m	1.75 m	1.80 m	1.90 m	2.00 m	2.10 m	2.20 m	2.30 m	
	54"	SOUS LE GENOU BELOW THE KNEE	1 ¼ yd	1 ¼ yd	1 ½ yd	1 ½ yd	1 ½ yd	1 ¾ yd	1 ¾ yd	1 ¾ yd	2 yd	2 yd	2 yd	2 yd	2 yd
			1.05 m	1.10 m	1.15 m	1.25 m	1.35 m	1.40 m	1.45 m	1.60 m	1.65 m	1.70 m	1.75 m	1.80 m	
	137 cm	MI-MOLLET MID-CALF	1 ½ yd	1 ¾ yd	1 ¾ yd	1 ¾ yd	2 yd	2 yd	2 yd	2 ¼ yd	2 ¼ yd	2 ¼ yd	2 ¼ yd	2 ¼ yd	2 ¼ yd
			1.30 m	1.40 m	1.45 m	1.60 m	1.70 m	1.75 m	1.80 m	1.85 m	1.90 m	2.00 m	2.00 m	2.05 m	

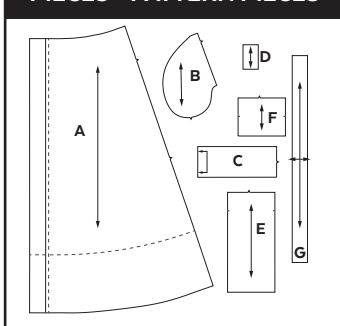
MESURES DU CORPS (FEMMES) - BODY MEASUREMENTS (WOMEN)

Taille US APPROX. US size	2	4	6	8	10	12	14	16	18	20	22	24				
Prêt-à-porter APPROX. RTW size	XS		S		M		L		XL		2XL					
Tailles euro - European sizes	34	36	38	40	42	44	46	48	50	52	54	56				
TAILLE JALIE - JALIE SIZES	R	S	T	U	V	W	X	Y	Z	AA	BB	CC	DD	EE	FF	GG
1 TOUR DE TAILLE NATURAL WAIST	27"	28"	29"	30"	31"	32"	33"	34"	35 ¼"	36 ½"	37 ¾"	39"	40 ¼"	41 ½"	42 ¾"	44"
2 TOUR DES HANCHES FULL HIPS	36"	37"	38"	39"	40"	41"	42"	43"	44 ½"	45 ¾"	47"	48 ½"	49 ¾"	51 ¼"	52 ¾"	54"
3 ENTREJAMBE (sol) INSEAM (FLOOR)	31"	32"	32"	32"	32"	32"	32"	32"	32"	32"	32"	32"	32"	32"	32"	32"

TISSU REQUIS - YARDAGE

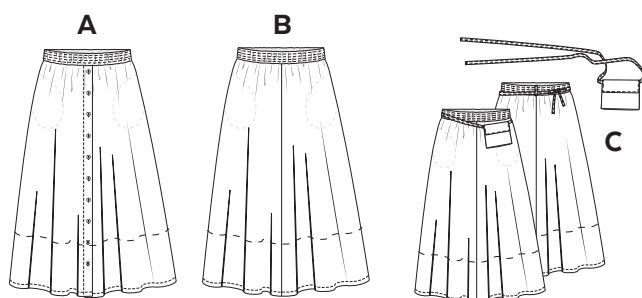
A/B (INCL. POCHE/ POUCH)	45"	SOUS LE GENOU BELOW THE KNEE	2 ¼ yd	2 ½ yd	2 ½ yd	2 ½ yd	2 ½ yd	2 ½ yd	2 ¾ yd	2 ¾ yd	2 ¾ yd	3 yd	3 ¼ yd	3 ¼ yd	3 ½ yd	3 ½ yd	3 ¾ yd
			2.05 m	2.10 m	2.15 m	2.15 m	2.15 m	2.20 m	2.25 m	2.30 m	2.40 m	2.50 m	2.60 m	2.75 m	2.90 m	3.00 m	3.20 m
115 cm	MI-MOLLET MID-CALF	2 ¾ yd	2 ¾ yd	3 yd	3 yd	3 ¼ yd	3 ½ yd	3 ½ yd	3 ½ yd	4 yd	4 yd	4 ¼ yd	4 ½ yd	4 ½ yd	4 ½ yd	4 ½ yd	4 ½ yd
		2.45 m	2.50 m	2.55 m	2.60 m	2.75 m	3.00 m	3.05 m	3.35 m	3.45 m	3.60 m	3.80 m	3.90 m	3.90 m	3.95 m	4.00 m	4.05 m
54"	SOUS LE GENOU BELOW THE KNEE	2 yd	2 yd	2 yd	2 ¼ yd	2 ¼ yd	2 ¼ yd	2 ¼ yd	2 ½ yd	2 ½ yd	2 ½ yd	2 ½ yd	2 ½ yd	2 ½ yd	2 ½ yd	2 ½ yd	3 yd
		1.80 m	1.80 m	1.80 m	1.85 m	1.85 m	1.85 m	2.00 m	2.00 m	2.10 m	2.10 m	2.15 m	2.15 m	2.15 m	2.15 m	2.20 m	2.55 m
137 cm	MI-MOLLET MID-CALF	2 ½ yd	2 ½ yd	2 ½ yd	2 ½ yd	2 ½ yd	2 ½ yd	2 ½ yd	2 ½ yd	2 ½ yd	2 ½ yd	2 ½ yd	3 yd	3 ¼ yd	3 ¼ yd	3 ½ yd	3 ¾ yd
		2.10 m	2.10 m	2.15 m	2.20 m	2.20 m	2.25 m	2.25 m	2.25 m	2.25 m	2.25 m	2.25 m	2.25 m	2.65 m	2.75 m	2.85 m	3.00 m

PIÈCES - PATTERN PIECES



TISSU POUR POCHE/ POUCH ONLY
FABRIC FOR POUCH ONLY

0.40 m
(½ yd)



MERCERIE - NOTIONS

A	BOUTONS 12-15 mm 1/2" - 5/8" BUTTONS	SOUS LE GENOU BELOW THE KNEE		F-H	I-K	L-N	O-P	Q-GG	
		4	5	6	7	8			
A/C	MI-MOLLET MID-CALF	MI-MOLLET MID-CALF		F-G	H-I	J-K	L-O	P-Y	Z-GG
		5	6	7	8	9	10		
ÉLASTIQUE 4 cm - 1 ½" ELASTIC									
F - O 0.65 m (¾ yd)					P - GG 1.15 m (1 ½ yd)				
ENTOILAGE THERMOCOILLANT FUSIBLE INTERFACING									
1 m (1 ¼ yd)									

PRÊT À COUDRE // READY TO SEW
ressources de couture (1 cm / 3/8") incluses dans le patron
1 cm / 3/8" seam allowances included in the pattern



© 2020 LES PATRONS JALIE INC.
www.jalie.com
IMPRIMÉ AU CANADA / PRINTED IN CANADA