

3910

JUSTAUCORPS COL MONTANT - HIGH NECK HALTER LEOTARDS

JADE

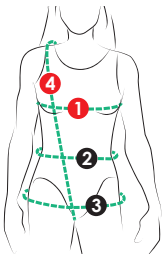
Choix de maillots sans manche avec col haut boutonné au dos, empiècements en filet, doublé au devant, dos ouvert et finition avec bande ou élastique à la cuisse. A: Découpe au-dessus du buste B: Découpe asymétrique. Compatible à la taille avec la jupe de la robe Tessa (3891).

28

tailles - sizes

Choice of leotards with high neck, keyhole back and choice of upper bust mesh insert designs. Leg openings can be finished with and elastic or band. A: Straight seaming across upper bust B: Asymmetrical seaming towards the collar. Both views have a waist seam that is compatible with the Tessa (3891) skirt (sold separately).

MESURES DU CORPS (FILLES) - BODY MEASUREMENTS (GIRLS)

Âge approximatif - Approximate age		2	3	4	5	6	7	8	9	10	11	12	13
Tailles européennes - European sizes		92	98	104	112	119	127	135	142	146	150	152	155
TAILLE JALIE - JALIE SIZES		F	G	H	I	J	K	L	M	N	O	P	Q
	1 TOUR DE POITRINE FULL BUST	21" 53 cm	22" 56 cm	23" 58 cm	24" 61 cm	25" 64 cm	26" 66 cm	27" 69 cm	28" 71 cm	29" 74 cm	30" 76 cm	31" 79 cm	32" 81 cm
	2 TOUR DE TAILLE NATURAL WAIST	20" 51 cm	20 1/2" 52 cm	21" 53 cm	21 1/2" 55 cm	22" 56 cm	22 1/2" 57 cm	23" 58 cm	23 3/4" 60 cm	24 1/2" 62 cm	25 1/4" 64 cm	25 3/4" 66 cm	26 1/2" 67 cm
	3 TOUR DES HANCHES FULL HIPS	22" 56 cm	23" 58 cm	24" 61 cm	25" 64 cm	26" 66 cm	27" 69 cm	28" 71 cm	29 1/2" 74 cm	30 1/2" 78 cm	32" 81 cm	33" 84 cm	34 1/2" 87 cm
	4 TRONC (DEVANT+DOS) TORSO (FRONT+BACK)	35" 89 cm	37" 94 cm	39" 99 cm	41" 104 cm	43" 109 cm	45" 114 cm	47" 119 cm	48 3/4" 123 cm	50 1/2" 128 cm	52" 132 cm	53 3/4" 137 cm	55 1/2" 141 cm

TISSU REQUIS - YARDAGE

60" 150 cm	TISSU PRINCIPAL MAIN FABRIC	3/4 yd 0.65 m	1 yd 0.70 m	1 yd 0.70 m	1 yd 0.70 m	1 yd 0.75 m	1 yd 0.75 m	1 yd 0.75 m	1 yd 0.80 m	1 yd 0.85 m	1 yd 0.90 m	1 yd 0.90 m	1 1/4 yd 0.95 m
	Tricot avec spandex, extensible en largeur ET en longueur (nylon/polyester+spandex, velours extensible). Knit with spandex with stretch across the width AND in the length (nylon/polyester + spandex, stretch	FILET EXTENSIBLE STRETCH MESH	1/2 yd 0.25 m	1/2 yd 0.25 m	1/2 yd 0.25 m	1/2 yd 0.25 m	1/2 yd 0.30 m	1/2 yd 0.30 m	1/2 yd 0.30 m	1/2 yd 0.30 m	1/2 yd 0.30 m	1/2 yd 0.35 m	1/2 yd 0.35 m
	COL + BANDES CONTRASTANTS CONTRAST COLLAR + LEG BANDS	1/4 yd 0.15 m	1/4 yd 0.15 m	1/4 yd 0.15 m	1/4 yd 0.15 m	1/4 yd 0.15 m	1/4 yd 0.15 m	1/4 yd 0.15 m	1/4 yd 0.15 m	1/4 yd 0.15 m	1/4 yd 0.15 m	1/4 yd 0.15 m	1/4 yd 0.15 m
	50% ÉLASTICITÉ MINIMUM REQUISE (LARGEUR ET LONGUEUR) MINIMUM STRETCH REQUIRED (WIDTH AND LENGTH)	VOTRE TISSU DEVRAIT S'ÉTIRER YOUR FABRIC SHOULD STRETCH										JUSQU'ICI TO HERE	

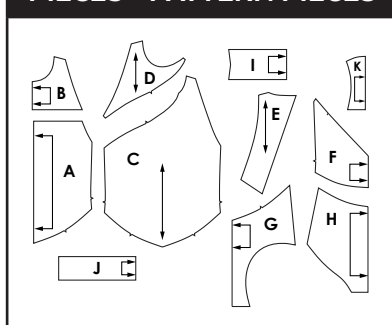
MESURES DU CORPS (FEMMES) - BODY MEASUREMENTS (WOMEN)

Taille US APPROX. US size	2	4	6	8	10	12	14	16	18	20	22	24				
Prêt-à-porter APPROX. RTW size	XS	S			M		L		XL		2XL					
Tailles euro - European sizes	34	36	38	40	42	44	46	48	50	52	54	56				
TAILLE JALIE - JALIE SIZES	R	S	T	U	V	W	X	Y	Z	AA	BB	CC	DD	EE	FF	GG
1 TOUR DE POITRINE FULL BUST	33" 84 cm	34" 86 cm	35" 89 cm	36" 91 cm	37" 94 cm	38" 96 cm	39" 99 cm	40" 102 cm	41 1/2" 106 cm	42 3/4" 109 cm	44" 112 cm	45 1/2" 116 cm	46 3/4" 119 cm	48 1/4" 123 cm	49 1/2" 126 cm	51" 130 cm
2 TOUR DE TAILLE NATURAL WAIST	27" 69 cm	28" 71 cm	29" 74 cm	30" 76 cm	31" 78 cm	32" 81 cm	33" 84 cm	34" 86 cm	35 1/4" 89 cm	36 1/2" 93 cm	37 3/4" 96 cm	39" 99 cm	40 1/4" 102 cm	41 1/2" 105 cm	42 3/4" 109 cm	44" 112 cm
3 TOUR DES HANCHES FULL HIPS	36" 91 cm	37" 94 cm	38" 96 cm	39" 99 cm	40" 102 cm	41" 104 cm	42" 106 cm	43" 109 cm	44 1/2" 113 cm	45 3/4" 116 cm	47" 120 cm	48 1/2" 123 cm	49 3/4" 126 cm	51 1/4" 130 cm	52 3/4" 134 cm	54" 137 cm
4 TRONC (DEVANT+DOS) TORSO (FRONT+BACK)	57 1/4" 145 cm	59" 150 cm	59 1/2" 152 cm	60" 153 cm	60 1/2" 154 cm	61" 155 cm	61 1/2" 156 cm	62 1/2" 159 cm	62 3/4" 161 cm	64" 163 cm	65" 165 cm	65 3/4" 167 cm	66 1/2" 169 cm	67 1/4" 171 cm	68 1/4" 173 cm	69" 175 cm

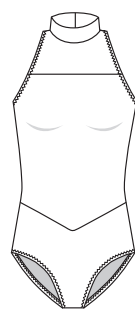
TISSU REQUIS - YARDAGE

TISSU PRINCIPAL MAIN FABRIC	1 1/4 yd 0.95 m	1 1/4 yd 1.00 m	1 1/4 yd 1.00 m	1 1/4 yd 1.00 m	1 1/4 yd 1.05 m	1 1/4 yd 1.05 m	1 1/4 yd 1.05 m	1 1/4 yd 1.05 m	1 1/4 yd 1.05 m	1 1/4 yd 1.05 m	1 1/4 yd 1.10 m	1 1/4 yd 1.10 m	1 1/4 yd 1.10 m	1 1/4 yd 1.10 m	1 1/4 yd 1.10 m	1 1/4 yd 1.10 m
FILET MESH	1/2 yd 0.35 m	1/2 yd 0.40 m	1/2 yd 0.40 m	1/2 yd 0.40 m	1/2 yd 0.40 m	1/2 yd 0.40 m	1/2 yd 0.40 m	1/2 yd 0.40 m	1/2 yd 0.40 m	1/2 yd 0.40 m	1/2 yd 0.40 m	1/2 yd 0.40 m	1/2 yd 0.45 m	1/2 yd 0.45 m	1/2 yd 0.45 m	1/2 yd 0.45 m
COL + BANDES CONTRASTANTS CONTRAST COLLAR + LEG BANDS	1/4 yd 0.15 m	1/4 yd 0.15 m	1/4 yd 0.15 m	1/4 yd 0.15 m	1/4 yd 0.15 m	1/4 yd 0.15 m	1/4 yd 0.15 m	1/4 yd 0.15 m	1/4 yd 0.20 m	1/4 yd 0.20 m	1/4 yd 0.20 m	1/4 yd 0.20 m	1/4 yd 0.20 m	1/4 yd 0.20 m	1/4 yd 0.20 m	1/4 yd 0.20 m

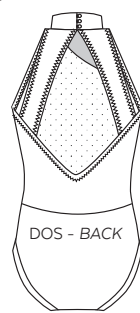
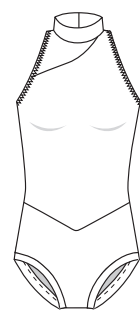
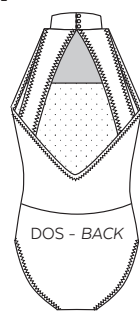
PIÈCES - PATTERN PIECES



A



B



MERCERIE - NOTIONS

ÉLASTIQUE 1 cm (3/8") ELASTIC		BOUTONS 1 cm 3/8" BUTTONS		DOUBLURE LINING	
F - R	S - GG	F - L	M - GG	F - N	S - GG
2,5 m (2 3/4 yd)	3,5 m (4 yd)	2	3	50 cm (20")	70 cm (28")
ÉLASTIQUE 3 mm (ou cordon élastique) pour l'attache au col (1/8") ELASTIC (or elastic cord) to make button loops at collar back				F - GG 15 cm (6")	



PRÊT À COUDRE // READY TO SEW
ressources de couture (6 mm / 1/4") incluses dans le patron
6 mm / 1/4" seam allowances included in the pattern



8303910

Jalie
PATRONS DE COUDRE
SEWING PATTERNS

© 2019 LES PATRONS JALIE INC.

www.jalie.com

IMPRIMÉ AU CANADA / PRINTED IN CANADA