

Short et pantalon ample à enfiler avec taille dos élastique, ceinture-ruban et plis à l'avant. Poche en biais à la hanche. LE patron pour les chaudes journées d'été!

Pull-on fluid shorts and wide-leg pants with elasticized back, front pleats and ribbon belt that ties in the front. Slant front pocket. The perfect pattern for hot summer days!

MESURES DU CORPS (FILLES) - BODY MEASUREMENTS (GIRLS)

Âge approximatif - Approximate age	2	3	4	5	6	7	8	9	10	11	12	13	
Tailles européennes - European sizes	92	98	104	112	119	127	135	142	146	150	152	155	
TAILLE JALIE - JALIE SIZES	F	G	H	I	J	K	L	M	N	O	P	Q	
	1 TOUR DE TAILLE NATURAL WAIST	20"	20 1/2"	21"	21 1/2"	22"	22 1/2"	23"	23 3/4"	24 1/2"	25 1/4"	25 3/4"	26 1/2"
	2 TOUR DES HANCHES FULL HIPS	22"	23"	24"	25"	26"	27"	28"	29 1/2"	30 1/2"	32"	33"	34 1/2"
	3 ENTREJAMBE (JUSQU'AU SOL) INSEAM (TO THE FLOOR)	13"	14 1/2"	16"	18"	19 1/2"	21"	23"	24"	25 1/2"	26 1/2"	28"	29"

TISSU REQUIS - YARDAGE

	45"	MODÈLE A (SHORT) VIEW A (SHORTS)	3/4 yd	1 yd	1 yd	1 yd	1 yd	1 yd	1 yd	1 1/4 yd	1 1/2 yd	1 1/2 yd	1 1/2 yd	1 3/4 yd
			0.65 m	0.70 m	0.70 m	0.75 m	0.75 m	0.75 m	0.80 m	1.05 m	1.20 m	1.20 m	1.25 m	1.40 m
Tissus légers et souples: lin, chambray, challis de rayonne, crêpe de chine, tencel lyocell	115 cm	MODÈLE B (PANTALON) VIEW B (TROUSERS)	1 1/2 yd	1 3/4 yd	1 3/4 yd	1 3/4 yd	2 yd	2 yd	2 1/4 yd	2 1/2 yd	2 1/2 yd	2 3/4 yd	2 3/4 yd	3 1/4 yd
			1.30 m	1.40 m	1.40 m	1.50 m	1.65 m	1.80 m	1.90 m	2.15 m	2.20 m	2.35 m	2.40 m	2.90 m
Light-weight fabrics with a soft hand and nice drape: linen, linen blends, chambray, rayon challis, crepe de chine, tencel lyocell.	54"	MODÈLE A (SHORT) VIEW A (SHORTS)	3/4 yd	3/4 yd	3/4 yd	1 yd	1 yd	1 yd	1 yd	1 yd	1 yd	1 yd	1 yd	1 yd
			0.55 m	0.65 m	0.65 m	0.70 m	0.70 m	0.75 m	0.85 m	0.85 m	0.85 m	0.85 m	0.85 m	0.90 m
	137 cm	MODÈLE B (PANTALON) VIEW B (TROUSERS)	1 yd	1 yd	1 1/4 yd	1 1/2 yd	1 1/2 yd	1 1/2 yd	2 1/4 yd	2 1/4 yd	2 1/4 yd	2 1/2 yd	2 1/2 yd	2 3/4 yd
			0.85 m	0.90 m	1.00 m	1.25 m	1.25 m	1.25 m	1.90 m	2.00 m	2.05 m	2.10 m	2.20 m	2.30 m

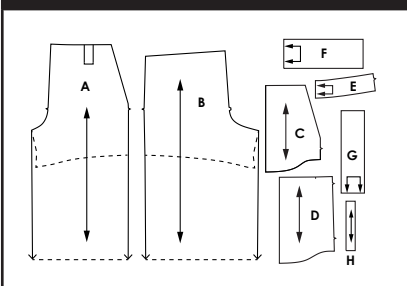
MESURES DU CORPS (FEMMES) - BODY MEASUREMENTS (WOMEN)

Taille US APPROX. US size	2	4	6	8	10	12	14	16	18	20	22	24				
Prêt-à-porter APPROX. RTW size	XS	S			M		L			XL		2XL				
Tailles euro - European sizes	34	36	38	40	42	44	46	48	50	52	54	56				
TAILLE JALIE - JALIE SIZES	R	S	T	U	V	W	X	Y	Z	AA	BB	CC	DD	EE	FF	GG
1 TOUR DE TAILLE NATURAL WAIST	27"	28"	29"	30"	31"	32"	33"	34"	35 1/4"	36 1/2"	37 3/4"	39"	40 1/4"	41 1/2"	42 3/4"	44"
2 TOUR DES HANCHES FULL HIPS	36"	37"	38"	39"	40"	41"	42"	43"	44 1/2"	45 3/4"	47"	48 1/2"	49 3/4"	51 1/4"	52 3/4"	54"
3 ENTREJAMBE (SOL) INSEAM (FLOOR)	31"	32"	32"	32"	32"	32"	32"	32"	32"	32"	32"	32"	32"	32"	32"	32"

TISSU REQUIS - YARDAGE

45"	MODÈLE A (SHORT) VIEW A (SHORTS)	1 3/4 yd	1 3/4 yd	1 3/4 yd	1 3/4 yd	1 3/4 yd	1 3/4 yd	1 3/4 yd	1 3/4 yd	1 3/4 yd	1 3/4 yd	1 3/4 yd	1 3/4 yd	2 yd	2 yd	2 yd	2 yd
		1.40 m	1.40 m	1.45 m	1.45 m	1.45 m	1.55 m	1.55 m	1.55 m	1.55 m	1.55 m	1.55 m	1.55 m	1.55 m	1.65 m	1.65 m	1.65 m
115 cm	MODÈLE B (PANTALON) VIEW B (TROUSERS)	3 1/4 yd	3 1/4 yd	3 1/4 yd	3 1/4 yd	3 1/4 yd	3 1/2 yd	3 1/2 yd	3 1/2 yd	3 1/2 yd	3 1/2 yd	3 1/2 yd	3 1/2 yd	3 1/2 yd	3 1/2 yd	3 1/2 yd	3 1/2 yd
		2.90 m	2.90 m	2.95 m	2.95 m	2.95 m	3.00 m	3.00 m	3.00 m	3.00 m	3.00 m	3.00 m	3.00 m	3.00 m	3.05 m	3.05 m	3.05 m
54"	MODÈLE A (SHORT) VIEW A (SHORTS)	1 yd	1 1/4 yd	1 1/4 yd	1 1/4 yd	1 1/4 yd	1 1/4 yd	1 1/4 yd	1 1/4 yd	1 1/4 yd	1 1/4 yd	1 1/4 yd	1 1/4 yd	2 yd	2 yd	2 yd	2 yd
		0.90 m	1.40 m	1.40 m	1.40 m	1.40 m	1.45 m	1.45 m	1.45 m	1.45 m	1.50 m	1.55 m	1.60 m	1.65 m	1.65 m	1.65 m	1.65 m
137 cm	MODÈLE B (PANTALON) VIEW B (TROUSERS)	2 3/4 yd	3 yd	3 yd	3 yd	3 yd	3 yd	3 yd	3 yd	3 yd	3 yd	3 yd	3 yd	3 yd	3 yd	3 yd	3 yd
		2.35 m	2.60 m	2.60 m	2.60 m	2.60 m	2.65 m	2.65 m	2.65 m	2.65 m	2.65 m	2.65 m	2.65 m	2.65 m	2.65 m	2.65 m	2.65 m

PIÈCES - PATTERN PIECES



MERCERIE - NOTIONS

ÉLASTIQUE 3 cm 1 1/4" ELASTIC	ÉLASTIQUE 4 cm 1 1/2" ELASTIC
F - K 35 cm (14")	L - GG 60 cm (24")
ENTOILAGE THERMOCOILLANT FUSIBLE INTERFACING	
25 cm (10")	

