

3896

PULL CARRÉ À COL ROULÉ - SQUARE TURTLENECK TOP

ÉMILIE

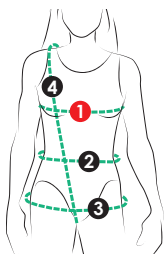
Haut ample à épaule tombante avec col roulé et manche longue semi-ajustée. Un vêtement décontracté très versatile.

28


tailles - sizes

Square-shaped loose-fitting top with roll-neck, drop shoulder and semi-fitted sleeve. A cozy and versatile garment.

MESURES DU CORPS (FILLES) - BODY MEASUREMENTS (GIRLS)

| Âge approximatif - Approximate age | 2 | 3 | 4 | 5 | 6 | 7 | 8 | 9 | 10 | 11 | 12 | 13 | |
|--|--|-------|---------|--------|---------|--------|---------|---------|---------|---------|---------|---------|---------|
| Tailles européennes - European sizes | 92 | 98 | 104 | 112 | 119 | 127 | 135 | 142 | 146 | 150 | 152 | 155 | |
| TAILLE JALIE - JALIE SIZES | F | G | H | I | J | K | L | M | N | O | P | Q | |
|  | 1 TOUR DE POITRINE FULL BUST | 21" | 22" | 23" | 24" | 25" | 26" | 27" | 28" | 29" | 30" | 31" | 32" |
| | | 53 cm | 56 cm | 58 cm | 61 cm | 64 cm | 66 cm | 69 cm | 71 cm | 74 cm | 76 cm | 79 cm | 81 cm |
| | 2 TOUR DE TAILLE NATURAL WAIST | 20" | 20 1/2" | 21" | 21 1/2" | 22" | 22 1/2" | 23" | 23 3/4" | 24 1/2" | 25 1/4" | 25 3/4" | 26 1/2" |
| | | 51 cm | 52 cm | 53 cm | 55 cm | 56 cm | 57 cm | 58 cm | 60 cm | 62 cm | 64 cm | 66 cm | 67 cm |
| 3 TOUR DES HANCHES FULL HIPS | 22" | 23" | 24" | 25" | 26" | 27" | 28" | 29 1/2" | 30 1/2" | 32" | 33" | 34 1/2" | |
| | 56 cm | 58 cm | 61 cm | 64 cm | 66 cm | 69 cm | 71 cm | 74 cm | 78 cm | 81 cm | 84 cm | 87 cm | |
| 4 TRONC (DEVANT+DOS) TORSO (FRONT+BACK) | 35" | 37" | 39" | 41" | 43" | 45" | 47" | 48 3/4" | 50 1/2" | 52" | 53 3/4" | 55 1/2" | |
| | 89 cm | 94 cm | 99 cm | 104 cm | 109 cm | 114 cm | 119 cm | 123 cm | 128 cm | 132 cm | 137 cm | 141 cm | |


TISSU REQUIS - YARDAGE

|  60" 150 cm | 1 1/4 yd | 1 1/4 yd | 1 1/4 yd | 1 1/2 yd | 1 1/2 yd | 1 1/2 yd | 1 1/2 yd | 1 1/2 yd | 1 3/4 yd | 1 3/4 yd | 1 3/4 yd | 1 3/4 yd |
|---|--|----------|----------|----------|----------|----------|----------|----------|----------|----------|----------|----------|
| | 1.00 m | 1.05 m | 1.10 m | 1.20 m | 1.25 m | 1.30 m | 1.35 m | 1.35 m | 1.40 m | 1.40 m | 1.45 m | 1.45 m |
| Tricot léger/moyen, extensible dans les deux sens, avec une tombée fluide (tricot de bambou ou rayonne, tricot à pull, velours extensible). | <div style="display: flex; align-items: center; justify-content: space-between;"> <div style="text-align: center;"> <p>40%</p> <p>ÉLASTICITÉ MINIMUM REQUISE (LARGEUR + LONGUEUR)</p> <p>MINIMUM STRETCH REQUIRED (ACROSS THE GRAIN AND IN THE LENGTH)</p> </div> <div style="background-color: red; color: white; padding: 5px; text-align: center;"> <p>VOTRE TISSU DEVRAIT S'ÉTIRER YOUR FABRIC SHOULD STRETCH</p> </div> <div style="text-align: center;"> <p>JUSQU'ICI TO HERE</p> </div> </div> | | | | | | | | | | | |
| Light/medium-weight knit with nice drape. Stretch in the width and length (rayon or bamboo blends, sweater knit, stretch velvet). | | | | | | | | | | | | |

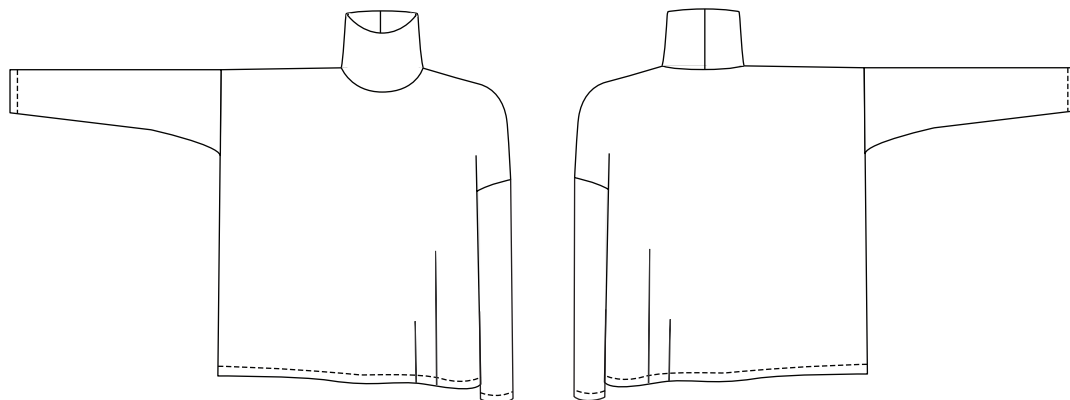
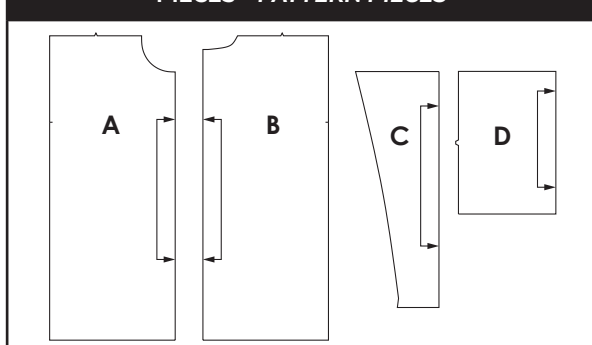
MESURES DU CORPS (FEMMES) - BODY MEASUREMENTS (WOMEN)

| Taille US APPROX. US size | 2 | 4 | 6 | 8 | 10 | 12 | 14 | 16 | 18 | 20 | 22 | 24 | | | | |
|---|---------|--------|---------|--------|---------|--------|---------|--------|---------|---------|---------|---------|---------|---------|---------|--------|
| Prêt-à-porter APPROX. RTW size | XS | | S | | M | | L | | XL | | 2XL | | | | | |
| Tailles euro - European sizes | 34 | 36 | 38 | 40 | 42 | 44 | 46 | 48 | 50 | 52 | 54 | 56 | | | | |
| TAILLE JALIE - JALIE SIZES | R | S | T | U | V | W | X | Y | Z | AA | BB | CC | DD | EE | FF | GG |
| 1 TOUR DE POITRINE FULL BUST | 33" | 34" | 35" | 36" | 37" | 38" | 39" | 40" | 41 1/2" | 42 3/4" | 44" | 45 1/2" | 46 3/4" | 48 1/4" | 49 1/2" | 51" |
| | 84 cm | 86 cm | 89 cm | 91 cm | 94 cm | 96 cm | 99 cm | 102 cm | 106 cm | 109 cm | 112 cm | 116 cm | 119 cm | 123 cm | 126 cm | 130 cm |
| 2 TOUR DE TAILLE NATURAL WAIST | 27" | 28" | 29" | 30" | 31" | 32" | 33" | 34" | 35 1/4" | 36 1/2" | 37 3/4" | 39" | 40 1/4" | 41 1/2" | 42 3/4" | 44" |
| | 69 cm | 71 cm | 74 cm | 76 cm | 78 cm | 81 cm | 84 cm | 86 cm | 89 cm | 93 cm | 96 cm | 99 cm | 102 cm | 105 cm | 109 cm | 112 cm |
| 3 TOUR DES HANCHES FULL HIPS | 36" | 37" | 38" | 39" | 40" | 41" | 42" | 43" | 44 1/2" | 45 3/4" | 47" | 48 1/2" | 49 3/4" | 51 1/4" | 52 3/4" | 54" |
| | 91 cm | 94 cm | 96 cm | 99 cm | 102 cm | 104 cm | 106 cm | 109 cm | 113 cm | 116 cm | 120 cm | 123 cm | 126 cm | 130 cm | 134 cm | 137 cm |
| 4 TRONC (DEVANT+DOS) TORSO (FRONT+BACK) | 57 1/4" | 59" | 59 1/2" | 60" | 60 1/2" | 61" | 61 1/2" | 62" | 62 3/4" | 63 3/4" | 64 1/4" | 65 1/2" | 66 1/4" | 67 1/4" | 68 1/4" | 69" |
| | 145 cm | 150 cm | 152 cm | 155 cm | 157 cm | 160 cm | 161 cm | 159 cm | 161 cm | 163 cm | 165 cm | 167 cm | 169 cm | 171 cm | 173 cm | 175 cm |

TISSU REQUIS - YARDAGE

|  60" 150 cm | 1 3/4 yd | 1 3/4 yd | 1 3/4 yd | 1 3/4 yd | 1 3/4 yd | 1 3/4 yd | 1 3/4 yd | 2 yd | 2 yd | 2 yd | 2 yd | 2 yd | 2 1/4 yd | 2 1/4 yd | 2 1/4 yd | 2 1/4 yd |
|--|----------|----------|----------|----------|----------|----------|----------|--------|--------|--------|--------|--------|----------|----------|----------|----------|
| | 1.50 m | 1.50 m | 1.55 m | 1.55 m | 1.60 m | 1.60 m | 1.60 m | 1.65 m | 1.65 m | 1.75 m | 1.75 m | 1.75 m | 1.85 m | 1.85 m | 1.85 m | 1.85 m |

PIÈCES - PATTERN PIECES



PRÊT À COUDRE // READY TO SEW

ressources de couture (6 mm / 1/4") incluses dans le patron
6 mm / 1/4" seam allowances included in the pattern

Jalie

PATRONS DE COUDRE
SEWING PATTERNS

© 2018 LES PATRONS JALIE INC.

www.jalie.com

IMPRIMÉ AU CANADA / PRINTED IN CANADA