

3889

PEIGNOIR - ROBE

MÉLANIE

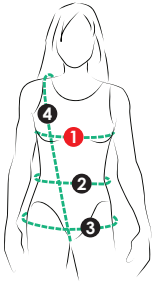
Peignoir avec ceinture et poches généreuses et manche trois-quart.
Ample et au genou, il peut être porté comme vêtement d'intérieur ou comme un veston ample.

27

tailles - sizes

Robe drafted for fluid woven fabrics. Includes a sash, generous patch pockets and three-quarter sleeves.
Knee-length and loose-fitting design that can be used as loungewear or over garments, as a jacket or cardigan in a heavier fabric.

MESURES DU CORPS (FILLES) - BODY MEASUREMENTS (GIRLS)

| Âge approximatif - Approximate age | | 2 | 3 | 4 | 5 | 6 | 7 | 8 | 9 | 10 | 11 | 12 | 13 |
|--|---|--------------|------------------|------------------|------------------|-------------------|-------------------|---------------|------------------|------------------|------------------|------------------|------------------|
| Tailles européennes - European sizes | | 92 | 98 | 104 | 112 | 119 | 127 | 135 | 142 | 146 | 150 | 152 | 155 |
| TAILLE JALIE - JALIE SIZES | | F | G | H | I | J | K | L | M | N | O | P | Q |
|  | 1 TOUR DE POITRINE FULL BUST | 21" 53 cm | 22" 56 cm | 23" 58 cm | 24" 61 cm | 25" 64 cm | 26" 66 cm | 27" 69 cm | 28" 71 cm | 29" 74 cm | 30" 76 cm | 31" 79 cm | 32" 81 cm |
| | 2 TOUR DE TAILLE NATURAL WAIST | 20" 51 cm | 20 1/2" 52 cm | 21" 53 cm | 21 1/2" 55 cm | 22" 56 cm | 22 1/2" 57 cm | 23" 58 cm | 23 3/4" 60 cm | 24 1/2" 62 cm | 25 1/4" 64 cm | 25 3/4" 66 cm | 26 1/2" 67 cm |
| | 3 TOUR DES HANCHES HIPS (FULLEST) | 22" 56 cm | 23" 58 cm | 24" 61 cm | 25" 64 cm | 26" 66 cm | 27" 69 cm | 28" 71 cm | 29 1/2" 74 cm | 30 1/2" 78 cm | 32" 81 cm | 33" 84 cm | 34 1/2" 87 cm |
| | 4 TRONC (DEVANT+DOS) TORSO (FRONT+BACK) | 35" 89 cm | 37" 94 cm | 38 1/2" 98 cm | 40" 102 cm | 41 1/2" 105 cm | 43 1/4" 110 cm | 45" 114 cm | 47" 119 cm | 49" 124 cm | 51" 130 cm | 53" 135 cm | 55" 140 cm |

TISSU REQUIS - YARDAGE

| | | | | | | | | | | | | | | |
|--|--------|---|----------|----------|----------|----------|----------|----------|----------|----------|----------|----------|----------|----------|
|  | 42" | UNI (UN SEUL TISSU) SOLID (ONE FABRIC) | 1 1/2 yd | 1 1/2 yd | 1 3/4 yd | 2 1/4 yd | 2 1/4 yd | 2 1/4 yd | 2 1/4 yd | 2 1/2 yd | 2 1/2 yd | 2 3/4 yd | 2 3/4 yd | 3 yd |
| | 106 cm | | 1.30 m | 1.35 m | 1.40 m | 1.85 m | 1.95 m | 2.00 m | 2.05 m | 2.15 m | 2.20 m | 2.40 m | 2.50 m | 2.55 m |
| | 56" | UNI (UN SEUL TISSU) SOLID (ONE FABRIC) | 1 1/2 yd | 1 1/2 yd | 1 3/4 yd | 1 3/4 yd | 1 3/4 yd | 1 3/4 yd | 1 3/4 yd | 2 yd | 2 yd | 2 yd | 2 yd | 2 1/4 yd |
| 142 cm | | | 1.30 m | 1.35 m | 1.40 m | 1.45 m | 1.50 m | 1.55 m | 1.60 m | 1.65 m | 1.75 m | 1.80 m | 1.85 m | 1.90 m |

TISSUS CONSEILLÉS RECOMMANDÉ FABRICS
Étoffe tissée avec une belle tombée: crêpe, challis de rayonne, soie, chambray, satin.
Woven fabric with soft hand like crepe, rayon challis, silk, satin, chambray.

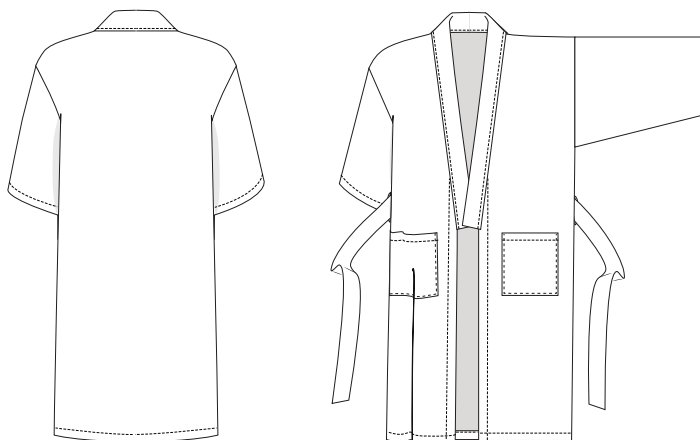
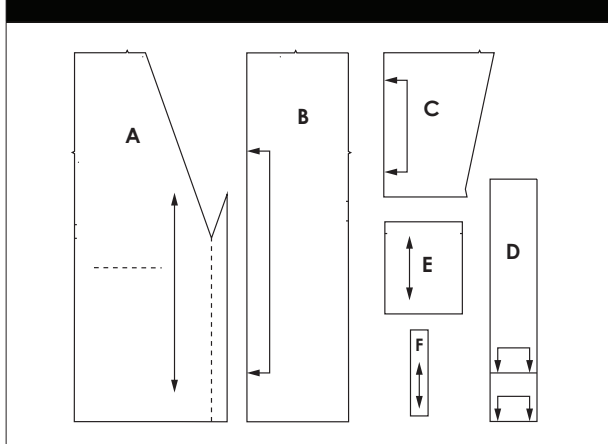
MESURES DU CORPS (FEMMES) - BODY MEASUREMENTS (WOMEN)

| Prêt-à-porter APPROX. RTW size | 4 | 6 | 7 | 8 | 9 | 10 | 11 | 12 | 13 | 14 | 15 | 16 | 18 | 20 | 22 |
|---|------------|------------|------------|------------|----------------|------------|----------------|----------------|----------------|------------|----------------|----------------|------------|----------------|-------------|
| Tailles euro - European sizes | 34 | 36 | 37 | 38 | 39 | 40 | 41 | 42 | 43 | 44 | 45 | 46 | 48 | 50 | 52 |
| TAILLE JALIE - JALIE SIZES | R | S | T | U | V | W | X | Y | Z | AA | BB | CC | DD | EE | FF |
| 1 TOUR DE POITRINE FULL BUST | 33" 84 | 34" 86 | 35" 89 | 36" 91 | 37" 94 | 38" 97 | 39" 99 | 40" 102 | 41" 104 | 42" 107 | 43" 109 | 44" 112 | 46" 117 | 48" 122 | 50" 127 |
| 2 TOUR DE TAILLE NATURAL WAIST | 27" 69 | 28" 71 | 29" 74 | 30" 76 | 31" 79 | 32" 81 | 33" 84 | 34" 86 | 35" 89 | 36" 91 | 37" 94 | 38" 97 | 40" 102 | 42" 107 | 44" 112 |
| 3 TOUR DES HANCHES HIPS (FULLEST) | 36" 91 | 37" 94 | 38" 97 | 39" 99 | 40" 102 | 41" 104 | 42" 107 | 43" 109 | 44" 112 | 45" 114 | 46" 117 | 47" 119 | 49" 124 | 51" 130 | 53" 135 |
| 4 TRONC (DEVANT+DOS) TORSO (FRONT+BACK) | 57" 145 | 59" 150 | 60" 152 | 61" 155 | 61 3/4" 157 | 63" 160 | 63 1/2" 161 | 64 1/2" 164 | 65 1/4" 166 | 66" 168 | 66 1/2" 168 | 66 1/2" 169 | 67" 170 | 67 1/2" 171 | 68 " 173 |

TISSU REQUIS - YARDAGE

| | | | | | | | | | | | | | | | | |
|--------|---|----------|--------|----------|----------|----------|--------|--------|--------|--------|--------|--------|----------|----------|----------|----------|
| 42" | UNI (UN SEUL TISSU) SOLID (ONE FABRIC) | 3 yd | 3 yd | 3 1/2 yd | 3 3/4 yd | 3 3/4 yd | 4 yd | 4 yd | 4 yd | 4 yd | 4 yd | 4 yd | 4 1/4 yd | 4 1/4 yd | 4 1/4 yd | 4 1/4 yd |
| 106 cm | | 2.65 m | 2.75 m | 3.20 m | 3.20 m | 3.30 m | 3.50 m | 3.50 m | 3.55 m | 3.55 m | 3.60 m | 3.65 m | 3.70 m | 3.75 m | 3.80 m | 3.85 m |
| 56" | UNI (UN SEUL TISSU) SOLID (ONE FABRIC) | 2 1/2 yd | 3 yd | 3 yd | 3 yd | 3 yd | 3 yd | 3 yd | 3 yd | 3 yd | 3 yd | 3 yd | 3 yd | 3 yd | 3 yd | 3 yd |
| 142 cm | | 2.20 m | 2.65 m | 2.65 m | 2.65 m | 2.65 m | 2.65 m | 2.65 m | 2.75 m | 2.75 m | 2.75 m | 2.75 m | 2.75 m | 2.75 m | 2.75 m | 2.75 m |

PIÈCES - PATTERN PIECES



PRÊT À COUDRE // READY TO SEW
ressources de couture (1 cm / 3/8") incluses dans le patron
1 cm / 3/8" seam allowances included in the pattern



1703889

Jalie
PATRONS DE COUDURE
SEWING PATTERNS

© 2018 LES PATRONS JALIE INC.
www.jalie.com

IMPRIMÉ AU CANADA / PRINTED IN CANADA