

3880

HAUT À ENCOLURE EN V SANS SOUCIS - WORRY-FREE V-NECK TOP

BOBBIE

Haut dolman ample à la poitrine et ajusté aux hanches avec encolure en V arrondie. La parementure-camisole unique cache le soutien-gorge et garde l'encolure près du corps en tout temps. Enfin, vous pouvez bouger librement!

28

tailles - sizes

Rounded-V neck dolman top, loose-fitting through the body and fitted at the hips with unique cropped-tank-like facing that keeps the neckline against the body and hides the bra at all times. No more layering, no more unwanted "reveals", even when you bend over to pick up something on the ground or hail a cab!

MESURES DU CORPS (FILLES) - BODY MEASUREMENTS (GIRLS)

Âge approximatif - Approximate age	2	3	4	5	6	7	8	9	10	11	12	13	
Tailles européennes - European sizes	92	98	104	112	119	127	135	142	146	150	152	155	
TAILLE JALIE - JALIE SIZES	F	G	H	I	J	K	L	M	N	O	P	Q	
	1 TOUR DE POITRINE FULL BUST	21"	22"	23"	24"	25"	26"	27"	28"	29"	30"	31"	32"
		53 cm	56 cm	58 cm	61 cm	64 cm	66 cm	69 cm	71 cm	74 cm	76 cm	79 cm	81 cm
	2 TOUR DE TAILLE WAIST	20"	20 1/2"	21"	21 1/2"	22"	22 1/2"	23"	23 3/4"	24 1/2"	25 1/4"	25 3/4"	26 1/2"
		51 cm	52 cm	53 cm	55 cm	56 cm	57 cm	58 cm	60 cm	62 cm	64 cm	66 cm	67 cm
3 TOUR DES HANCHES HIPS (FULLEST)	22"	23"	24"	25"	26"	27"	28"	29 1/2"	30 1/2"	32"	33"	34 1/2"	
	56 cm	58 cm	61 cm	64 cm	66 cm	69 cm	71 cm	74 cm	78 cm	81 cm	84 cm	87 cm	
4 TRONC (DEVANT + DOS) TORSO (FRONT + BACK)	35"	37"	39"	41"	43"	45"	47"	48 3/4"	50 1/2"	52"	53 3/4"	55 1/2"	
	89 cm	94 cm	99 cm	104 cm	109 cm	114 cm	119 cm	123 cm	128 cm	132 cm	137 cm	141 cm	

TISSU REQUIS - YARDAGE

60" / 150 cm	CHANDAIL SEULEMENT TOP ONLY	1/2 yd	3/4 yd	3/4 yd	3/4 yd	3/4 yd	3/4 yd	3/4 yd	3/4 yd	3/4 yd	3/4 yd	1 yd	1 yd	1 yd
		0.45 m	0.50 m	0.50 m	0.55 m	0.55 m	0.65 m	0.65 m	0.70 m	0.70 m	0.75 m	0.75 m	0.80 m	
Tricot léger/moyen (jersey, ITY) lisse des deux côtés, qui drapé bien, avec une tombée fluide. Tricot de polyester brossé NON recommandé. Light/medium weight knit (jersey, ITY) with fluid drape. Double-brushed poly is NOT recommended for the outer layer (it would cling to the facing)	PAREMENTURE SEULEMENT FACING ONLY	1/2 yd	1/2 yd	1/2 yd	1/2 yd	1/2 yd	1/2 yd	1/2 yd	1/2 yd	1/2 yd	1/2 yd	1/2 yd	1/2 yd	1/2 yd
		0.30 m	0.30 m	0.35 m	0.35 m	0.35 m	0.35 m	0.35 m	0.40 m	0.40 m	0.45 m	0.45 m	0.45 m	
	CHANDAIL + PAREMENTURE TOP + FACING	1/2 yd	3/4 yd	3/4 yd	3/4 yd	3/4 yd	3/4 yd	3/4 yd	1 yd	1 yd	1 yd	1 yd	1 yd	1 yd
		0.45 m	0.50 m	0.50 m	0.55 m	0.55 m	0.65 m	0.70 m	0.75 m	0.80 m	0.85 m	0.90 m	0.90 m	
20%	ÉLASTICITÉ MINIMUM REQUISE (EN LARGEUR) MINIMUM STRETCH REQUIRED (ACROSS THE GRAIN)	VOTRE TISSU DEVRAIT S'ÉTIRER YOUR FABRIC SHOULD STRETCH										JUSQU'ICI TO HERE		

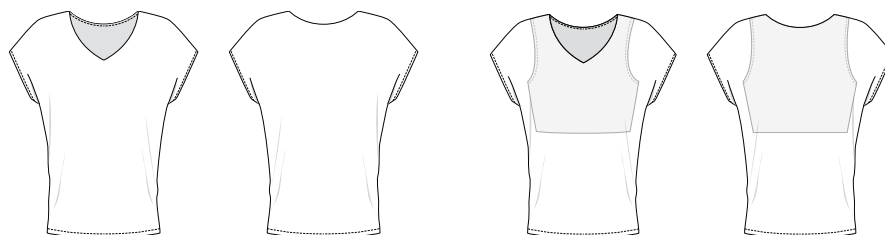
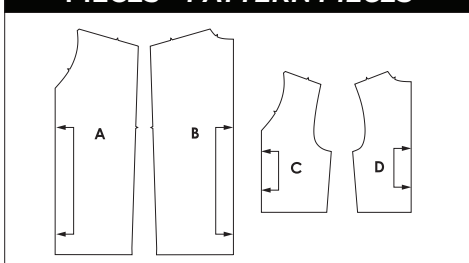
MESURES DU CORPS (FEMMES) - BODY MEASUREMENTS (WOMEN)

Taille US APPROX. US size	2	4	6	8	10	12	14	16	18	20	22	24				
Prêt-à-porter APPROX. RTW size	XS		S		M		L		XL		2XL					
Tailles euro - European sizes	34	36	38	40	42	44	46	48	50	52	54	56				
TAILLE JALIE - JALIE SIZES	R	S	T	U	V	W	X	Y	Z	AA	BB	CC	DD	EE	FF	GG
1 TOUR DE POITRINE FULL BUST	33"	34"	35"	36"	37"	38"	39"	40"	41 1/2"	42 3/4"	44"	45 1/2"	46 3/4"	48 1/4"	49 1/2"	51"
	84 cm	86 cm	89 cm	91 cm	94 cm	96 cm	99 cm	102 cm	106 cm	109 cm	112 cm	116 cm	119 cm	123 cm	126 cm	130 cm
2 TOUR DE TAILLE NATURAL WAIST	27"	28"	29"	30"	31"	32"	33"	34"	35 1/4"	36 1/2"	37 3/4"	39"	40 1/4"	41 1/2"	42 3/4"	44"
	69 cm	71 cm	74 cm	76 cm	78 cm	81 cm	84 cm	86 cm	89 cm	93 cm	96 cm	99 cm	102 cm	105 cm	109 cm	112 cm
3 TOUR DES HANCHES FULL HIPS	36"	37"	38"	39"	40"	41"	42"	43"	44 1/2"	45 3/4"	47"	48 1/2"	49 3/4"	51 1/4"	52 3/4"	54"
	91 cm	94 cm	96 cm	99 cm	102 cm	104 cm	106 cm	109 cm	112 cm	116 cm	119 cm	123 cm	126 cm	130 cm	134 cm	137 cm
4 TRONC (DEVANT+DOS) TORSO (FRONT+BACK)	57 1/4"	59"	59 1/2"	60"	60 1/2"	61"	61 1/2"	62"	62 3/4"	63 3/4"	64 1/4"	65 1/2"	66 1/4"	67 1/4"	68 1/4"	69"
	145 cm	150 cm	152 cm	155 cm	157 cm	160 cm	161 cm	159 cm	161 cm	163 cm	165 cm	167 cm	169 cm	171 cm	173 cm	175 cm

TISSU REQUIS - YARDAGE

CHANDAIL SEULEMENT TOP ONLY	1 yd	1 yd	1 yd	1 yd	1 yd	1 yd	1 yd	1 yd	1 yd	1 yd	1 yd	1 yd	1 yd	1 yd	1 yd	1 yd
	0.80 m	0.80 m	0.85 m	0.85 m	0.85 m	0.85 m	0.85 m	0.85 m	0.85 m	0.85 m	0.85 m	0.85 m	0.90 m	0.90 m	0.90 m	0.90 m
PAREMENTURE SEULEMENT FACING ONLY	3/4 yd	3/4 yd	3/4 yd	3/4 yd	3/4 yd	3/4 yd	3/4 yd	3/4 yd	3/4 yd	3/4 yd	3/4 yd	3/4 yd	3/4 yd	3/4 yd	3/4 yd	3/4 yd
	0.50 m	0.50 m	0.50 m	0.50 m	0.55 m	0.55 m	0.55 m	0.55 m	0.55 m	0.55 m	0.55 m	0.55 m	0.55 m	0.55 m	0.55 m	0.55 m
CHANDAIL + PAREMENTURE TOP + FACING	1 1/4 yd	1 1/4 yd	1 1/2 yd	1 1/2 yd	1 3/4 yd	1 3/4 yd	1 3/4 yd	1 3/4 yd	1 3/4 yd	1 3/4 yd	1 3/4 yd	1 3/4 yd	1 3/4 yd	1 3/4 yd	1 3/4 yd	1 3/4 yd
	0.95 m	1.00 m	1.30 m	1.30 m	1.35 m	1.35 m	1.35 m	1.35 m	1.40 m	1.40 m	1.40 m	1.40 m	1.40 m	1.40 m	1.45 m	1.45 m

PIÈCES - PATTERN PIECES



CE QUE LES GENS VOIENT...
WHAT PEOPLE SEE...

VOTRE SECRET!
YOUR SECRET!



PRÊT À COUDRE // READY TO SEW
ressources de couture (6 mm / 1/4") incluses dans le patron
6 mm / 1/4" seam allowances included in the pattern



1503880

Jalie
PATRONS DE COUTURE
SEWING PATTERNS

© 2018 LES PATRONS JALIE INC.
www.jalie.com
IMPRIMÉ AU CANADA / PRINTED IN CANADA