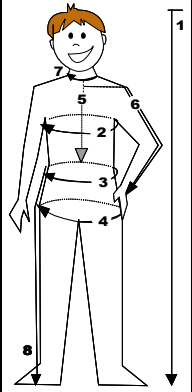


Parka avec patte coupe-vent, taille avec cordon élastique, poches "zippées" avec rabat, poignet et capuchon ajustables, visière "anti-goutte", look technique.

Lined parka with adjustable elastic at waist, zippered pockets with flap, adjustable cuffs and hood, windblock shield at front, "anti-drop" hood peak, technical gear look.

**ENFANTS - CHILDREN**

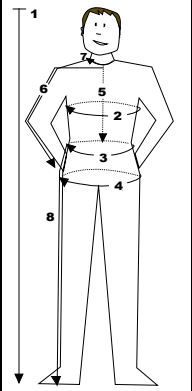


| Tailles correspondantes -<br>Corresponding sizes                                | 2       | 3       | 4       | 5       | 6       | 7       | 8       | 9       | 10      | 11      | 12      | 13      | 14      |
|---|---------|---------|---------|---------|---------|---------|---------|---------|---------|---------|---------|---------|---------|
| Tailles Jalie Sizes   | F       | G       | H       | I       | J       | K       | L       | M       | N       | O       | P       | Q       | R       |
| <b>Tableau de mesures - Measurement Chart</b>                                   |         |         |         |         |         |         |         |         |         |         |         |         |         |
| 1 Stature<br>Height   | 36"     | 38 1/2" | 41"     | 43 1/2" | 45 1/2" | 48"     | 50 1/2" | 53"     | 55"     | 57 1/2" | 60"     | 62"     | 64 1/2" |
| 2 Tour de poitrine<br>Bust  | 22"     | 22 5/8" | 23 5/8" | 24 1/2" | 25 1/8" | 26"     | 26 3/4" | 27 1/2" | 28 3/8" | 29 3/8" | 30"     | 31 3/4" | 33"     |
| 3 Tour de taille<br>Waist   | 20 7/8" | 21 1/2" | 22"     | 22 5/8" | 22 1/4" | 23 1/4" | 24 1/2" | 25"     | 25 5/8" | 26 5/8" | 27 1/2" | 28 3/4" | 29 3/4" |
| 4 Tour des hanches<br>Hips  | 22 7/8" | 23 5/8" | 24 5/8" | 25 1/2" | 26 3/8" | 27 1/8" | 28 1/8" | 29 1/8" | 30"     | 31 1/2" | 32 5/8" | 34 1/4" | 35 5/8" |
| 5 Dos (encolure > taille)<br>Back (neck > waist)                                | 9 1/8"  | 9 5/8"  | 10 1/8" | 10 3/4" | 11 1/4" | 11 7/8" | 12 1/2" | 13"     | 13 3/4" | 14 1/2" | 15 1/4" | 16 1/4" | 17 1/4" |
| 6 Longueur manche (milieu dos > poignet)<br>Sleeve Length (middle back > wrist) | 16 5/8" | 17 3/4" | 18 7/8" | 20"     | 21 1/4" | 22 1/2" | 23 5/8" | 24 3/4" | 26"     | 27 1/8" | 28 3/8" | 29 1/2" | 30 3/4" |
| 7 Tour du cou<br>Neckband   | 10 3/8" | 10 3/4" | 11"     | 11 1/2" | 11 3/4" | 12 1/8" | 12 1/2" | 12 7/8" | 13"     | 13 3/8" | 13 1/2" | 14"     | 14 1/4" |
| 8 Longueur côté (taille > sol)<br>Side leg length (waist > ground)              | 20"     | 22"     | 23 5/8" | 25 5/8" | 27 1/8" | 29 1/8" | 30 3/4" | 32 1/4" | 33 1/2" | 35"     | 36 1/4" | 37 1/2" | 39"     |

Tissu suggéré : Nylon imperméable (tissu principal), Polar 12 onces ou nylon (pour la doublure)  
Suggested fabrics: Water repellant nylon (shell) and polar fleece or thin nylon-polyster (lining)

| Tissu<br>Fabric       | Largeur<br>Width | Quantité requise - Required yardage |               |               |               |               |               |               |               |               |               |             |             |             |             |
|-----------------------|------------------|-------------------------------------|---------------|---------------|---------------|---------------|---------------|---------------|---------------|---------------|---------------|-------------|-------------|-------------|-------------|
| A- Tissu<br>A- Fabric | 150 cm<br>59"    | m<br>yd                             | 0.45<br>1/2   | 0.45<br>1/2   | 0.45<br>1/2   | 0.45<br>1/2   | 0.50<br>1/2   | 0.50<br>1/2   | 0.50<br>1/2   | 0.50<br>2/4   | 0.55<br>2/4   | 0.60<br>3/4 | 0.60<br>3/4 | 0.60<br>3/4 | 0.65<br>3/4 |
| B- Tissu<br>B- Fabric | 150 cm<br>59"    | m<br>yd                             | 1.20<br>1 1/2 | 1.20<br>1 1/2 | 1.25<br>1 1/2 | 1.35<br>1 1/2 | 1.35<br>1 2/4 | 1.45<br>1 2/4 | 1.50<br>1 3/4 | 1.60<br>1 3/4 | 1.65<br>1 3/4 | 1.70<br>2   | 1.80<br>2   | 1.85<br>2   | 1.85<br>2   |
| Doubleure / Lining    | 150 cm<br>59"    | m<br>yd                             | 1.00<br>1     | 1.10<br>1     | 1.25<br>1 1/2 | 1.25<br>1 1/2 | 1.35<br>1 1/2 | 1.35<br>1 1/2 | 1.50<br>1 1/2 | 1.55<br>1 1/2 | 1.60<br>1 1/2 | 1.65<br>2   | 1.70<br>2   | 1.85<br>2   | 1.90<br>2   |

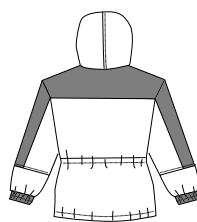
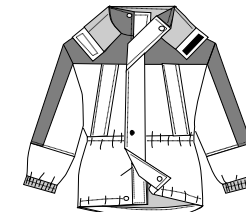
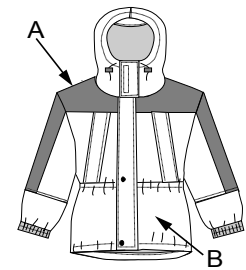
**ADULTES - ADULTS**



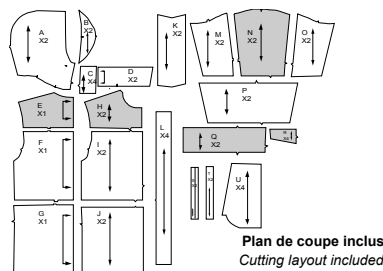
| Tailles correspondantes -<br>Corresponding Sizes                                | 34      | 36      | 38      | 40      | 42      | 44      | 46      | 48      | 50       |
|---|---------|---------|---------|---------|---------|---------|---------|---------|----------|
| Tailles européennes - European Sizes  | X Small | Small   | Medium  | Medium  | Large   | Large   | X Large | X Large | XX Large |
| Tailles Jalie Sizes   | S       | T       | U       | V       | W       | X       | Y       | Z       | AA       |
| <b>Tableau de mesures - Measurement Chart</b>                                   |         |         |         |         |         |         |         |         |          |
| 1 Stature<br>Height   | 67"     | 67 3/4" | 68 1/2" | 69 1/4" | 70"     | 70 3/4" | 71 5/8" | 72 1/2" | 73 1/4"  |
| 2 Tour de poitrine<br>Bust  | 34 5/8" | 36 1/4" | 37 3/4" | 39 3/8" | 41"     | 42.5"   | 44"     | 45 5/8" | 47 1/4"  |
| 3 Tour de taille<br>Waist   | 30"     | 32 1/4" | 33 7/8" | 35 1/2" | 37"     | 38 5/8" | 41"     | 43 3/8" | 45 1/2"  |
| 4 Tour des hanches<br>Hips  | 37"     | 38 5/8" | 40 1/8" | 41 3/4" | 43 3/8" | 44 7/8" | 46 1/2" | 48"     | 49 5/8"  |
| 5 Dos (encolure > taille)<br>Back (neck > waist)                                | 18 1/8" | 18 1/4" | 18 1/2" | 18 5/8" | 18 7/8" | 19 1/8" | 19 1/4" | 19 1/2" | 19 5/8"  |
| 6 Longueur manche (milieu dos > poignet)<br>Sleeve Length (middle back > wrist) | 31 7/8" | 32 1/4" | 32 5/8" | 33"     | 33 1/2" | 33 7/8" | 34 1/4" | 34 5/8" | 35"      |
| 7 Tour du cou<br>Neckband   | 14 1/2" | 15"     | 15 3/8" | 15 3/4" | 16 1/8" | 16 1/2" | 17"     | 17 1/8" | 17 3/4"  |
| 8 Longueur côté (taille > sol)<br>Side leg length (waist > ground)              | 40"     | 40 1/2" | 41"     | 41 1/2" | 42"     | 42 1/2" | 43"     | 43 1/2" | 44"      |

Tissu suggéré : Nylon imperméable (tissu principal) polar 12 onces ou nylon (pour la doublure)  
Suggested fabrics: Water repellant nylon (shell) and polar fleece or thin nylon-polyster (lining)

| Tissu<br>Fabric       | Largeur<br>Width | Quantité requise - Required yardage |               |               |               |               |               |               |               |               |
|-----------------------|------------------|-------------------------------------|---------------|---------------|---------------|---------------|---------------|---------------|---------------|---------------|
| A- Tissu<br>A- Fabric | 150 cm<br>59"    | m<br>yd                             | 0.65<br>3/4   | 0.65<br>3/4   | 0.65<br>3/4   | 0.70<br>3/4   | 0.70<br>3/4   | 0.70<br>3/4   | 0.75<br>3/4   | 0.75<br>3/4   |
| B- Tissu<br>B- Fabric | 150 cm<br>59"    | m<br>yd                             | 2.10<br>2 1/4 | 2.15<br>2 1/4 | 2.15<br>2 1/4 | 2.15<br>2 1/4 | 2.15<br>2 1/4 | 2.15<br>2 1/4 | 2.20<br>2 1/2 | 2.25<br>2 1/2 |
| Doubleure / Lining    | 150 cm<br>59"    | m<br>yd                             | 2.35<br>2 1/2 | 2.35<br>2 1/2 | 2.40<br>2 1/2 | 2.40<br>2 1/2 | 2.45<br>2 1/2 | 2.45<br>2 1/2 | 2.50<br>2 1/2 | 2.55<br>2 3/4 |



**Pièces du patron - Pattern pieces**



Ce vêtement est cousu à 1 cm (3/8") du bord.  
Stitch this garment a 1 cm (3/8") from the edge.

**Articles de mercerie - Notions**

|     |   |  |                                 |          |
|-----|---|--|---------------------------------|----------|
| 1 x | Fermeture à glissière<br>séparable (deux sens)<br>2-Way Separating Zipper | Élastique 2,5 cm Elastic 1"            | Cordon élastique / elastic cord |          |
|     | F 45 cm 18"   | F - J 100 cm 40"                       | F - L 3m                        | 3 3/8 yd |
|     | G - H 50 cm 20"   | K - V 110 cm 44"                       | M - S 3,5m                      | 3 3/4 yd |
|     | I - J 55 cm 22"   | W - AA 115 cm 46"                      | T - AA 4 m                      | 4 1/4 yd |
|     | K - M 60 cm 24"   | Velcro 2 cm (3/4")<br>F - AA 30 cm 12" |                                 |          |
|     | N - O 65 cm 26"   | Bouton Pression / Snaps<br>4X          |                                 |          |
|     | P 70 cm 28"   | Serre-cordon / Cord lock toggle        |                                 |          |
|     | Q - R 75 cm 30"   | 5x                                     |                                 |          |
|     | S - AA 80 cm 32"  | 6x                                     |                                 |          |
| 2 x | Fermeture à glissière poche<br>Zipper for pockets                         |  |                                 |          |
|     | F - I 20 cm 8"  |  |                                 |          |
|     | J - N 25 cm 10"   |  |                                 |          |
|     | O - AA 30 cm 12"  |  |                                 |          |

© Les patrons Jalie 2002  
Toute reproduction est interdite  
Reproduction is forbidden