

catalogue

2024/2025



MONDAINE®

Swiss  Watch



conterts

ABOUT US

- 08** A Swiss Family-Owned Company
- 09** Brand USP
- 11** Watchmaking in Switzerland
- 14** Our Mission
- 19** Design
- 20** Iconic Red
- 24** As Iconic As You
- 27** Our Manifesto
- 28** We Care
- 34** Our Sustainability Story
- 36** Brand Story

FEATURES + ATTRIBUTES

- 40** Movements
- 42** Materials
- 43** Technologies
- 44** Our Straps

OUR COLLECTIONS

- 47** Classic
- 61** evo2
- 73** essence
- 79** Simply Elegant
- 83** The Original
- 87** stop2go
- 95** Cushion
- 101** Neo
- 107** Clocks

EXTRA

- 117** Straps
- 129** Icons
- 131** In a Nutshell
- 132** Collections Overview



Swiss Made Quality. Minimalistic Design. Sustainability.

We, Swiss watchmaker Mondaine Watch Ltd., have grown into a leading Swiss watch company since we were founded by Erwin Bernheim in 1951. The MONDAINE brand is family-owned, manufactured and distributed worldwide by the Mondaine Group.

We have a passion for cutting-edge watch manufacturing, award-winning just-in-time logistics and excellent value for money. Since 1986, we have been manufacturing wristwatches, wall clocks, table clocks and pocket watches with the licensed design of the SBB Swiss railway station clocks and distributing them exclusively worldwide.

Since September 2019, Mondaine Watch Ltd. has been operating a photovoltaic solar system on the roof of our own factory in Biberist, Switzerland. The electricity generated from solar energy covers up to 80% of our total annual needs, the remaining amount of energy is covered by green energy, provided through a hydroelectric power plant.

We, the Mondaine Group, are one of the world's first comprehensively CO₂ neutral brands and companies (scopes 1, 2, and 3 of the Greenhouse Gas Protocol) due to our efforts over the past decades, following the 3R Rules: Reduce, Reuse, Recycle.

MONDAINE Team

A **Swiss** family-owned company

Founded in 1951 by Erwin Bernheim in Solothurn, Switzerland

Today, co-owned by André and Ronnie Bernheim (2nd generation), having Niels Møller CEO of MWL

Independent Swiss watch group but also reliable and long-term partner

Our watches, proudly **SWISS MADE**, are not only crafted with meticulous Swiss precision and powered by Swiss movements but also boast timeless design

Sustainable through tradition and across generations: CO₂ neutral Scope 1, 2 and 3 of the Greenhouse Gas Protocol

Brand USP



SWISS MADE

Swissness
High-quality and longevity
Great precision and reliability
Tradition and consistency



MINIMALISTIC DESIGN

Iconic Swiss design
High readability
Timeless



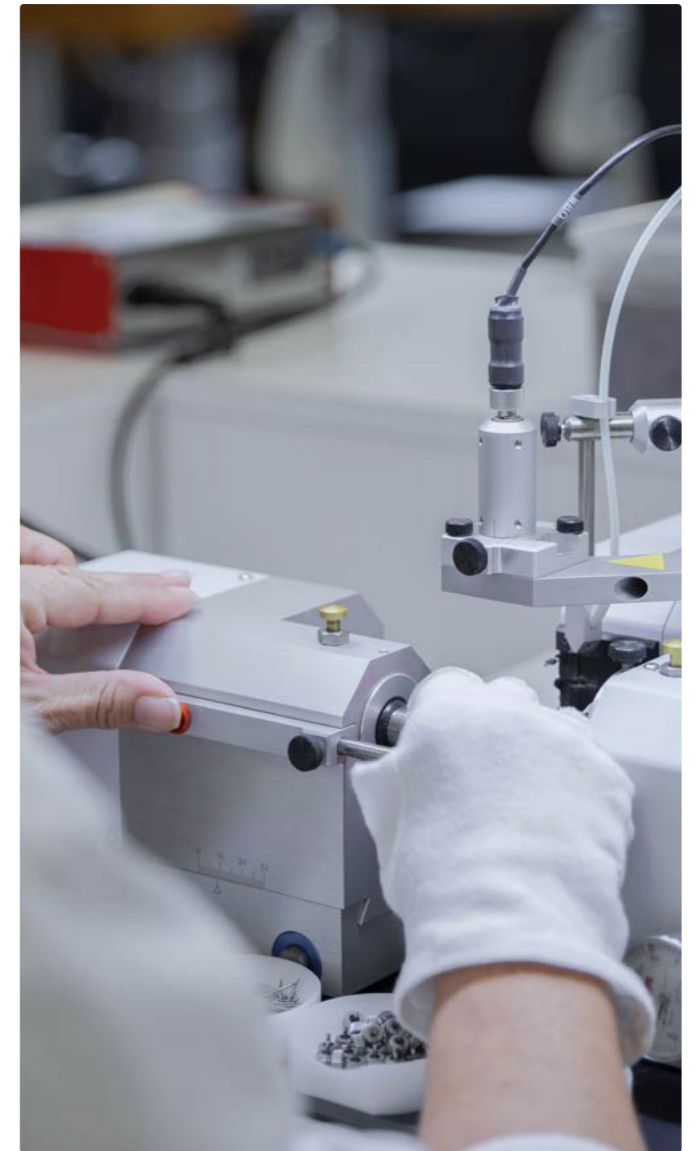
SUSTAINABLE

CO₂ neutral
Environmental and social responsibility
Long lasting designs



INNOVATIVE

Sustainable materials
Vegan straps
stop2go exclusive movement
Patented BackLight technology



Watchmaking in Switzerland

SWISS MADE: THE ONLY TRUE REFERENCE

Swiss Made watches are renowned worldwide for their prestige, reflecting know-how, quality, precision, and reliability. This label is the only true reference in the world of watchmaking, and MONDAINE combines these qualities, making us the top choice for consumers seeking high-value timepieces. Proudly Swiss Made, MONDAINE watches adhere to strict criteria set by Swiss law, ensuring that at least 60% of manufacturing

costs and the essential manufacturing step of the watch head (excluding the straps) occur in Switzerland and a final quality control inspection must take place on Swiss territory. Located in Solothurn, MONDAINE watches are crafted with meticulous craftsmanship and undergo rigorous testing to meet the highest standards.

What is the value of Swiss Made

SWISS MOVEMENT

The pinnacle of accuracy, precision, and durability.

CRAFTSMANSHIP

Meticulously hand-assembled, rigorously quality-checked.

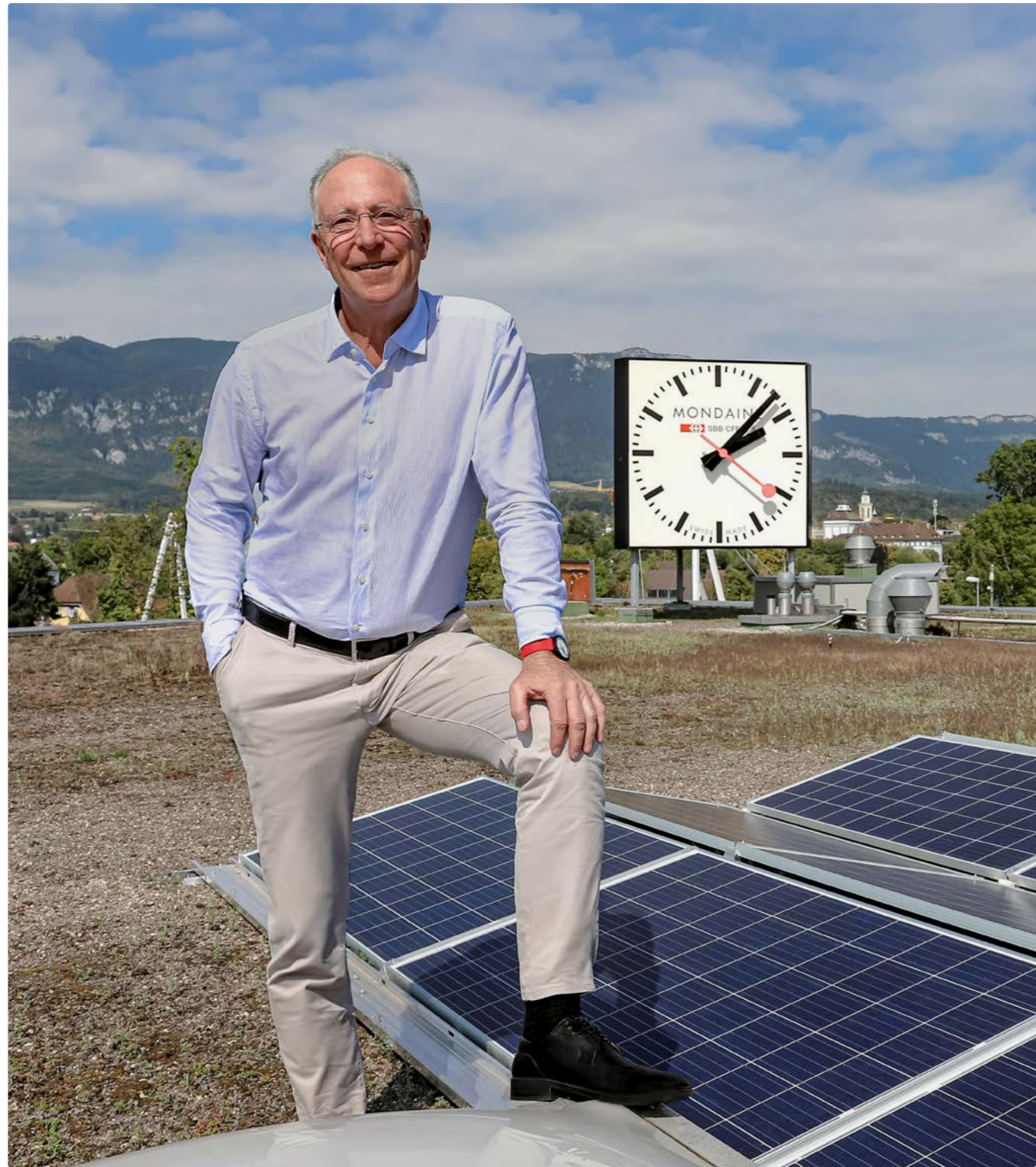
INNOVATION

Pushing boundaries to enhance functionality and aesthetics.

AFTER-SALES SERVICE

Offering excellent customer service.

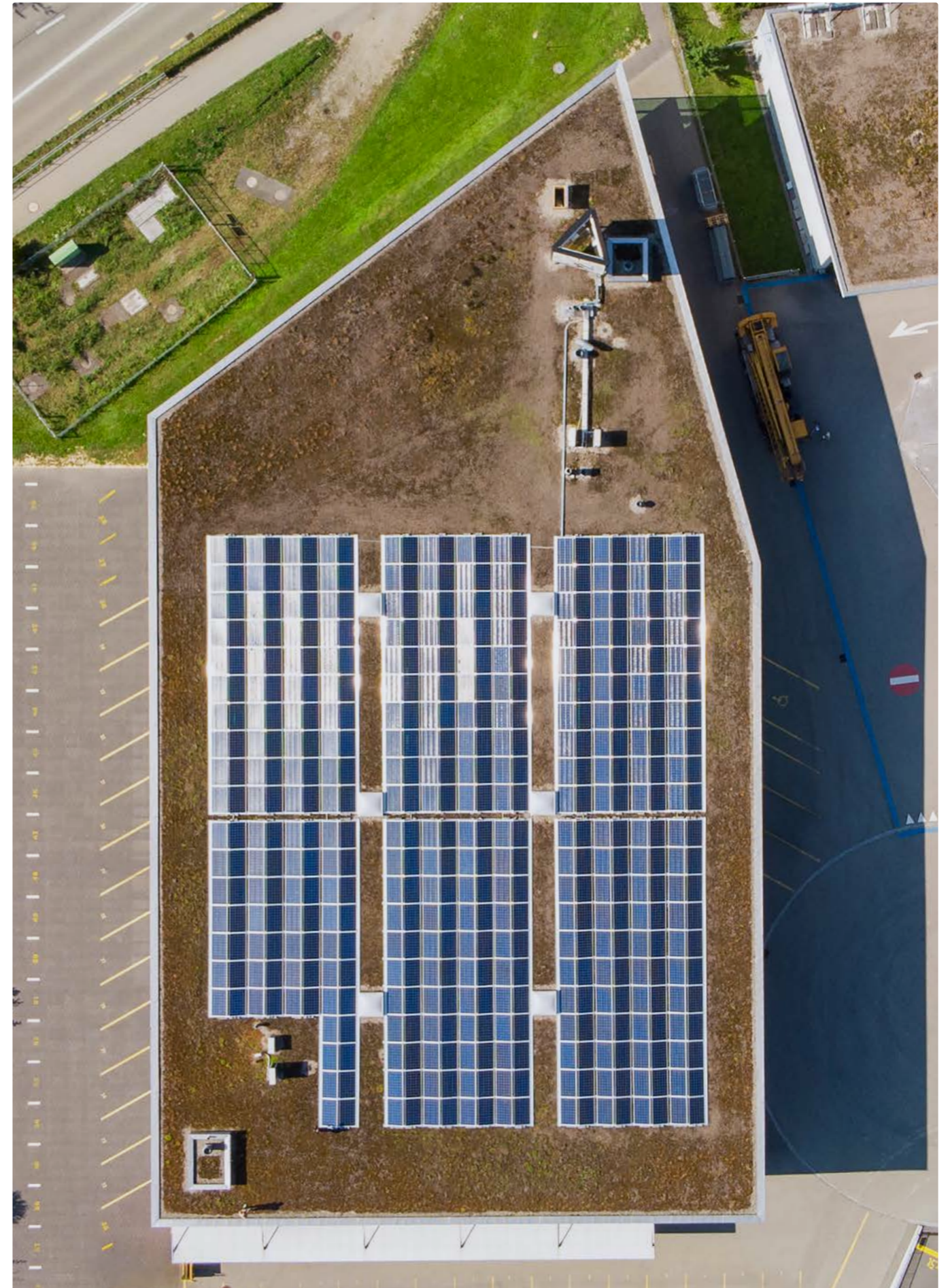




Our mission

ABOUT US

For more than 60 years, the MONDAINE family has been aiming to be **simply better**: form and function in perfect harmony. We focus on what really matters for our consumers, uniting **our passion** for timeless designs with useful innovations, functionality and the highest **Swiss craftsmanship**. We provide affordable, long-lasting quality products with personality and care for a **sustainable future**.







Design

OFFICIAL SWISS RAILWAYS STATION WATCH

The station clock used by the SBB, the **Swiss Federal Railways**, is an iconic piece of Swiss design, present at every train station in Switzerland. In 1944, *Hans Hilfiker*, an SBB employee and designer, crafted what is now known as the "Official Swiss Railways Clock". Its readability and legibility were paramount, with large, clear indexes and bold hands facilitating time-telling for passengers and station staff. Inspired by the trowel of station dispatchers, Hilfiker introduced the distinctive red point in the main station of Zurich, Switzerland, visible to all travelers and tourists, serving as the landmark of the largest train station in Switzerland.

Today, the MONDAINE SBB collection stands as a respected design in its own right, recognized as one of the top ten classic Swiss watch designs. Conceived in Switzerland and made for the world, this collection sets standards with its **excellent readability** and **unique minimalist design**. This globally renowned watch classic collection has achieved cult status with its design. It is prominently displayed at the iconic meeting point in the main station of Zurich, Switzerland, visible to all travelers and tourists, serving as the landmark of the largest train station in Switzerland.



Iconic Red

STORY OF THE RED SECOND HAND

Since our inception, red has stood as the iconic colour of the MONDAINE brand. It's the pop of colour in our design, highlights our rich history and heritage, and even mirrors the presence of red in the Swiss flag. As you step onto any Swiss station platform, in the middle of all the busy activity, the countdown is evident: from afar, you can discern the 45 seconds remaining until the hand reaches twelve, marking the departure of the train. This iconic feature of Swiss railway station clocks has stood as a design staple for decades. The choice of red for the second hand of the Swiss railway station clocks holds deep significance rooted in functionality and tradition. Originally utilized in various signaling systems across different sectors, including shooting ranges, air traffic control, and maritime communication, red emerged as a universal symbol of alertness and caution. In the context of railway operations, red signified a crucial message: stop. Hans Hilfiker's design ingeniously incorporated this historical association, ensuring that railway passengers were not only informed of the time but also compelled to pause and reflect in a moment of stillness. With the red second hand fixed in place, the train remained safely stationed until the designated departure time. Thus, the red hue of the second hand transcends mere aesthetics, embodying a legacy of functionality, safety, and the timeless elegance of Swiss craftsmanship.



AS ICONIC AS YOU



 SBB CFF FFS

MONDAINE®

Swiss  Watch

AS ICONIC AS YOU



AS ICONIC AS YOU

THE EVOLVING FACE OF MONDAINE

At MONDAINE, we believe that everyone is unique and deserves to express themselves in their own iconic way. **AS ICONIC AS YOU** embodies our commitment to honoring distinct styles and personalities. It pays a compliment to bold styles, attitudes, gestures, and moments. This is not just a mere marketing slogan, but a promise to our consumers. Our pledge is to create products that empower them to confidently showcase their one-of-a-kind identity.

AS ICONIC AS YOU celebrates this individuality and what sets us aside from other watch brands. Our bold yet elegant and understated design contains over 70 years' worth of heritage and is rooted in the official Swiss Railways Station clock. Our minimalist design is instantly recognized around the world thanks to the easy-to-read face, distinctive hands and the famous red seconds hand.

Originally designed for the Swiss railway in the 1940s, this timeless classic has become an icon of Swiss design, and has been featured in prestigious museums, exhibits, and wrists around the world. Furthermore, MONDAINE is and remains an icon in pioneering the watch industry towards sustainability by taking many innovative steps for almost 50 years. In the end, being iconic is about creating a lasting legacy that stands the test of time.

It's more than a design. It's a lifestyle, an attitude. It's about building a brand that resonates with our consumers and can become a part of their lives. So, we know our mission: that whatever we design, and whatever we do, it has to be iconic.

AS ICONIC AS YOU

design
heritage
attitude
actions
moments
people





Our Manifesto

Being Iconic.

What do we mean when we call something iconic?

Do we mean that it's bold and unique?

Or do we mean that it's elegant and classic?

For us, the term applies to more than a design.

It's a lifestyle, an **attitude**.

It is the intersection between individuality and timelessness

That carries your purpose forward.

It tells you when to take a time out.

And when to make a change.

From comprehensive CO₂ neutrality,

Production powered by the sun and renewable energy,

To wondertree oil watch cases and vegan grape leather straps.

Our stance on sustainability is nothing less than iconic.

And our design?

Over 70 years' worth of Swiss heritage and innovation

On wrists, walls, and tables all over the world.

It's even on you.

And it fits just right.

So, we know our mission:

That whatever we design, and whatever we do.

It has to be iconic.

AS ICONIC AS YOU



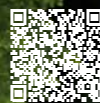
We care

CO₂ NEUTRALITY IS IN OUR DNA

At MONDAINE, **#wecare** about protecting our planet and future generations. Our commitment to sustainability isn't just a mission - it's a way of life embedded in every timepiece we create, and this has been the case for decades, as evidenced in our **Sustainability Report**. From the materials we choose, to the production and the recycling processes, we continue to stay vigilant and to improve the sustainability of the overall life cycle of our watches. The emissions we cannot avoid, we offset with collaborations with NGOs in reforestation.

In 2020, we became one of the first watch companies worldwide to be comprehensively CO₂ neutral for scope 1, 2, 3 of the **Greenhouse Gas Protocol (GHG)**, a milestone we repeated in 2021. In 2022, MONDAINE switched to vegan grape leather straps, furthering our **sustainability commitment** to long-term CO₂ neutrality.

For more information, check our **Sustainability Report** online or scan the QR code.



How we drive change

Sustainable Sourcing - We consider and research our materials with utmost care and consideration of their impact on the planet. We opt for eco-friendly alternatives whenever possible. From our **stainless steel** used for watch and strap production, composed of up to 91% recycled content, to innovative materials like **vegan grape leather** derived from organic wine waste to **textile from recycled PET bottles**, **cork** and **castor oil compound**. The vegan grape leather that is used in all collections, is based on organic waste of wine production: everything which cannot be used at the end of the wine-making process, is used to make high-quality grape leather. The castor oil compound consists of castor oil from wonder tree, glass fiber, fossil oil, colour pigments. We believe that plant-based materials are the way forward.

Powered by Nature - With our state-of-the-art photovoltaic solar system built in 2019, *up to 80% of our energy needs are met by the sun's renewable energy*. The rest? Supplied by a local hydroelectric power plant, ensuring our operations remain as carbon neutral as possible.

Eco-Friendly Packaging - From **FSC-certified paper** to rPet ribbon made from **recycled plastic bottles**, every part of the packaging is chosen with sustainability in mind. Plus, our **ink** and **adhesives** are non-toxic, because caring for the environment means caring for every detail.



Circular Economy Advocates - Waste isn't in our vocabulary. For decades, we've meticulously collected and **recycled materials** like **paper**, **cardboard**, **plastics**, and **watch components**, ensuring that nothing goes to waste. As part of this philosophy, we also offer **free watch recycling** in our factory in Switzerland. By embracing a circular economy model, we're paving the way for a more sustainable future. We are offering consumers the opportunity to return their old, defective, or unwanted watches to us, where we dismantle them and send the parts to recycling firms. Even watches from other brands are welcome, except for their plastic ones.

Fairventure Worldwide and Gula Gula Collaboration Since 2020 we have been collaborating with these two non-profit organizations. Dedicated to the responsible reforestation of endangered regions, particularly the rainforests of Indonesia's Borneo Island, Fairventure is committed to find solutions that go beyond reforestation and offer long-term social and environmental solutions. By supporting the important work of these NGOs, we are able to offset the emissions we cannot avoid. Furthermore, we support many other NGOs: **Smiling Gecko Foundation** and **Water for Water Foundation**.





SUSTAINABILITY NEVER LOOKED SO GOOD



Since 2020, Mondaine Group is one of the first watch companies worldwide to be CO₂ neutral for all 3 GHG scopes 1,2,3.
REUSE, REDUCE, RECYCLE.



MONDAINE®

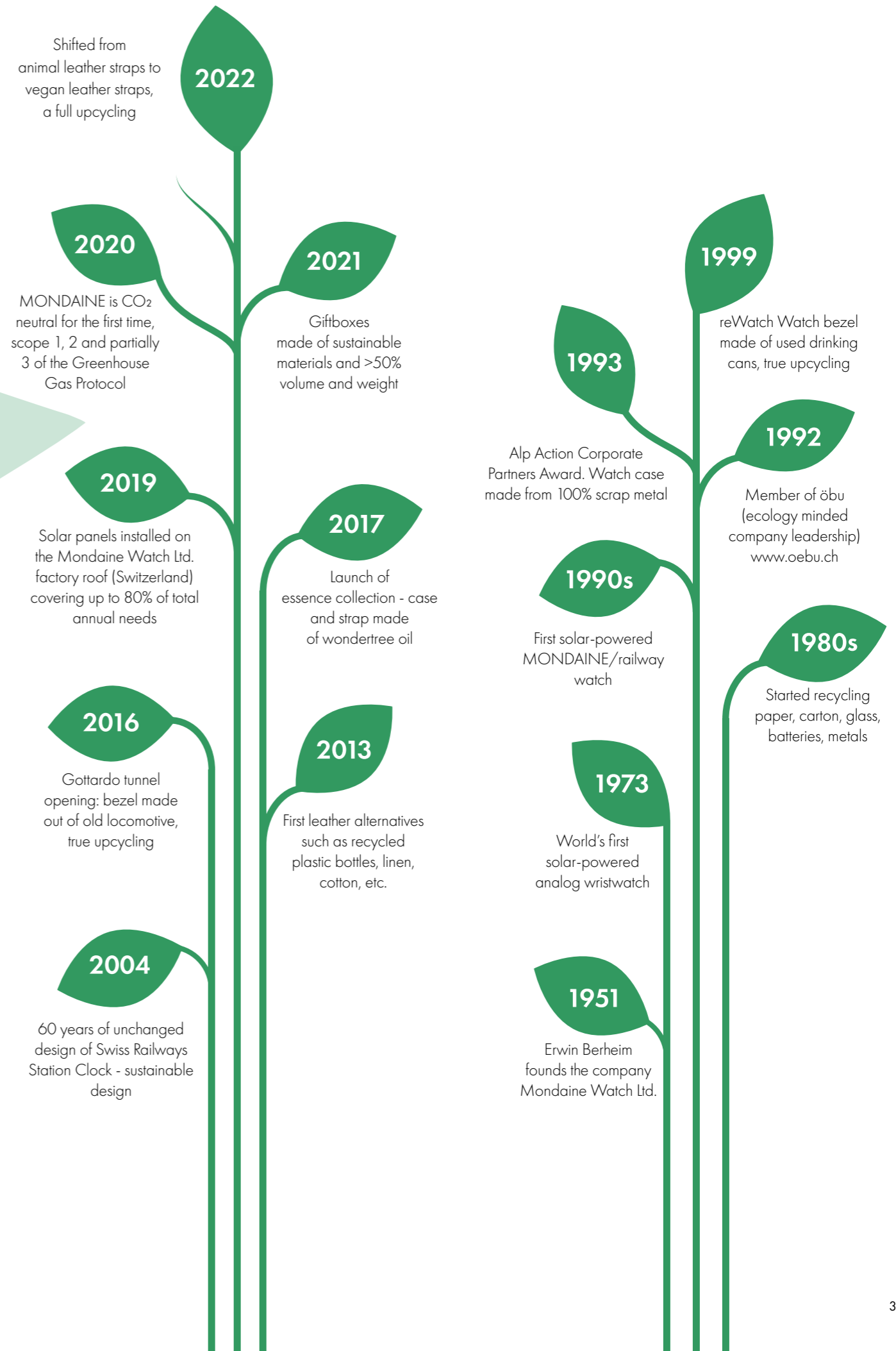
Swiss  Watch

AS ICONIC AS YOU

Our sustainability story

SUSTAINABILITY PIONEERS

As a family-owned Swiss SME, Mondaine Watch Ltd. is a pioneer in the field of sustainability. We are one of the leaders in sustainability in the watch industry and have been actively caring for the environment by taking many innovative steps for more than 50 years. "For decades, we have consistently maintained a responsible use of resources, searched for eco-friendly solutions and alternative materials. With our successful track record, we continuously reduce our ecological footprint, step by step." says *André Bernheim*, Co-owner and Chairman of the Board of Directors and Environmental Officer of the Group. Furthermore, MONDAINE is and remains an icon in pioneering the watch industry towards sustainability, as one of the world's first comprehensively carbon-neutral watch brands and companies. The watches are produced with green energy, up to 80% of which is derived from our own photovoltaic solar power system. Join us in our journey towards a more sustainable future. Together, we can make a real difference - one watch at a time. Because at MONDAINE, **#wecare** about the Earth, our customers, and the legacy we leave behind.





Brand story

THE BRAND OF ICONIC SWISS WATCHES

MONDAINE watches highlight Swiss excellence in both quality and design. Our **minimalist aesthetic**, clear and easily readable face, distinctive hands, and renowned **red seconds hand** have earned us global recognition. The MONDAINE SBB collection, featuring the iconic design of the Official Swiss Railways Clock, is instantly recognizable and embodies modern Swiss heritage. Invented, conceived, and crafted in Switzerland, MONDAINE timepieces are made for the world.

- 2023**

Relaunched the most awaited collection of all times - **stop2go collection**. Featuring a strikingly robust design and thick, crown-less case, the stop2go collection recreates the iconic design of the Swiss Railways Station like never before.
- 2022**

The **stop2go WiFi wall clock** is in the style of the famous Swiss Federal Railway (SBB) station clocks, can be set easily and conveniently via smartphone thanks to the new WiFi connectivity.
- 2021**

MONDAINE extended the collection with more **automatic watches**: Original Automatic and evo2.
- 2020**

MONDAINE is **CO₂ neutral** for the first time, scope 1, 2 and partially 3 of the Greenhouse Gas Protocol.
- 2019**

75 Year Anniversary. MONDAINE honors the anniversary of the Swiss Railway clock. essence collection was updated with 100% vegan eco-friendly strap made from cork lining and textile from recycled PET bottles, with a quick-change enhancement.
- 2017**

Probably the most sustainable collection in the world was launched - **essence**. The **stop2go wall clock** has been enhanced with smart technology to better suit modern lifestyles. MONDAINE **BackLight Technology** ensures clear visibility of the hands in low-light conditions.
- 2016**

Several MONDAINE watches were imbued with a **MONDAINE PayChip™**, designed to offer efficient transactions at contactless payment points.
- 2013**

Launch of the MONDAINE **stop2go watch** collection.
- 2012**

Vintage Handwinder. The traditional MONDAINE vintage watch is featuring a mechanical hand-wound movement and a transparent case back.
- 2006**

20th anniversary special edition. Design classic. MONDAINE is featured in the encyclopedic edition "Phaidon" presenting the 999 ultimate Design Classics.
- 2005**

Night vision. MONDAINE's self-powered illumination system maintains a permanent glow for years, providing steady, long-lasting readability without any additional light source.
- 2001**

evo-lution. The evo2 watch line features a gently rounded case topped by a slightly domed mineral crystal with a magnifying effect.
- 1994**

Meeting point in Zurich. A four-meter high Swiss Railways Clock by MONDAINE represents the central meeting area in Zurich, Switzerland's biggest city.
- 1993**

Design Plus Award. The MONDAINE collection is widely considered to be one of the "10 Classic Swiss Watch Designs."
- 1989**

MONDAINE Official Swiss Railways desk accessories are the famous clocks in miniature, and carry the same Swiss reputation of excellent watchmaking, punctuality, precision and uncomplicated, concise design.
- 1988**

First ladies' watch. Since the first collection launched in 1986, new lines have been introduced each year to ensure that the MONDAINE Official Swiss Railways Watch appeals to a wide consumer audience.
- 1986**

The Classic. Inspired by the iconic patented design of the Swiss Railways Clock, the Mondaine Watch Ltd., owned by the Bernheim family, transformed it into a watch collection with an official license from the Federal Swiss Railways.
- 1944**

The Design. **Hans Hilfiker**, a Swiss engineer and designer and employee of the Federal Swiss Railways, created a clock which has become known as the "Official Swiss Railways Clock".



**WE AIM
TO BE
SIMPLY
*BETTER.***

Movements

The movement (also sometimes called caliber or calibre) is the engine inside that powers a watch, the heart of the watch. Our MONDAINE watches have Swiss Made movements and they are renowned for their quality, reliability and precision. Our company uses automatic, chronograph, stop2go and quartz movements.

Automatic

An **automatic** watch is powered by winding the watch up either by the crown or simply by moving the watch and turning the rotor behind the case back. This rotor is what specifically designates a watch as automatic.

What is special about an automatic watch? An automatic watch offers two advantages at once: an elegant mechanical caliber that also conveniently powers itself. The **self-winding rotor** means that if it is worn regularly, an automatic timepiece will keep itself ticking and doesn't need to be rewound by hand.



stop2go

The **stop2go** model watches feature a special electronic circuit programmed to accelerate the second hand at the 58th second, causing it to pause for a moment upon reaching the 12:00 position for each passing minute. After a brief stop, lasting approximately 2 seconds, the second hand resumes its movement once the minute hand transitions.

Unlike regular quartz watches, which operate with a single motor for all three hands, the MONDAINE SBB **stop2go movement** utilizes three separate motors, one for each hand. A distinctive hallmark of the Swiss station clock is the smooth motion of the red second hand, creating the impression of continuous gliding, as observed on the Original at every Swiss station.



Chronograph

Chronograph watches have a classic design and a timeless sense of style. There is no other type of watch that requires as much interaction from its owner as the chronograph. Moreover, there is a certain pleasure that comes from interacting with a mechanical chronograph movement: the wearer feels the button release under the right amount of finger pressure, hears the impressive click, and the chrono hand starts its march.

There is a tension that builds as the hand approaches 60 seconds again and again and the minute counter ticks over to another hash. MONDAINE chronograph is all about iconic Swiss design, readiness, potential, and the human interaction with a watchmaker's impeccable precision — not to mention the rare opportunity to stop time.



Quartz

Quartz movements are mostly electronic systems: a piece of the mineral quartz is powered by a battery as its primary power source. It's the force behind the dial that drives the hands and powers all complications.

Unlike the smooth sweeping motion of a mechanical movement, the second hand of a quartz watch moves in distinct individual ticks. In fact, around 90% of the world's watches use a battery as their power source. The timekeeping of a quartz watch is the most accurate available whereas the maintenance is minimal.



Materials

At MONDAINE, our commitment to quality and innovation is evident in the materials we use, setting us apart and adding value to the functionality and performance of our watches. Each element is meticulously selected to enhance the longevity and design of our iconic timepieces.

Sapphire and Mineral Crystal

Sapphire crystal is a very hard, transparent material made by crystallizing pure aluminium oxide at a very high temperature. MONDAINE watch glasses made of sapphire crystal are scratch-resistant, with anti-reflective coatings for superior readability at all time.

Mineral crystal is a material made from silica, precisely tempered to create mineral crystal. MONDAINE's mineral crystals are specially hardened (550 to 650 Vickers), approximately 20% harder than conventional mineral crystals. Therefore, the mineral crystal is durable and does not shatter upon impact.



Stainless Steel

We, at MONDAINE, utilize **316L stainless steel** known for its superior strength, longevity, and modern, anti-allergic design. This steel is highly scratch-resistant and resistant to oxidation, rust, or discoloration. Our stainless steel is crafted from up to **91% recycled materials**, ensuring the highest level of purity and quality used by the company.



Technologies

In today's fast-paced world, having a watch that offers exceptional readability in low-light conditions is essential. MONDAINE watches incorporate a range of cutting-edge technologies to enhance our low-light readability and ensure that you can easily tell the time, no matter the lighting conditions.

BackLight Technology

The **BackLight technology** was patented by us at Monaine Watch Ltd. and it allows you to read the time in low light. A watch with BackLight adds style and elegance to your wrist.

The BackLight technology is represented by a foil filled with high Super-LumiNova® material which is glued to the backside of the hour and minute hands. The Super-LumiNova® is passively charged through the dial.



Super-LumiNova® (Afterglow)

Super-LumiNova® or "afterglow" pigments are a non-radioactive and non-toxic alternative for illuminating markings on timepiece dials and hands in the dark. These pigments operate like a light battery. After sufficient activation by sunlight or artificial light, they glow in the dark for many hours. Larger markings guarantee full legibility for the whole night. We, the entire Monaine Group, have been focusing intensively on our environment and its resources for decades. As part of this approach, the luminous watches that are glowing in the dark are crafted thanks to thoughtfully curated expertise that is constantly enhanced and passed on from one generation to the next with great care.



Our watch straps are **vegan**

A PLANT-BASED ALTERNATIVE TO ANIMAL LEATHER

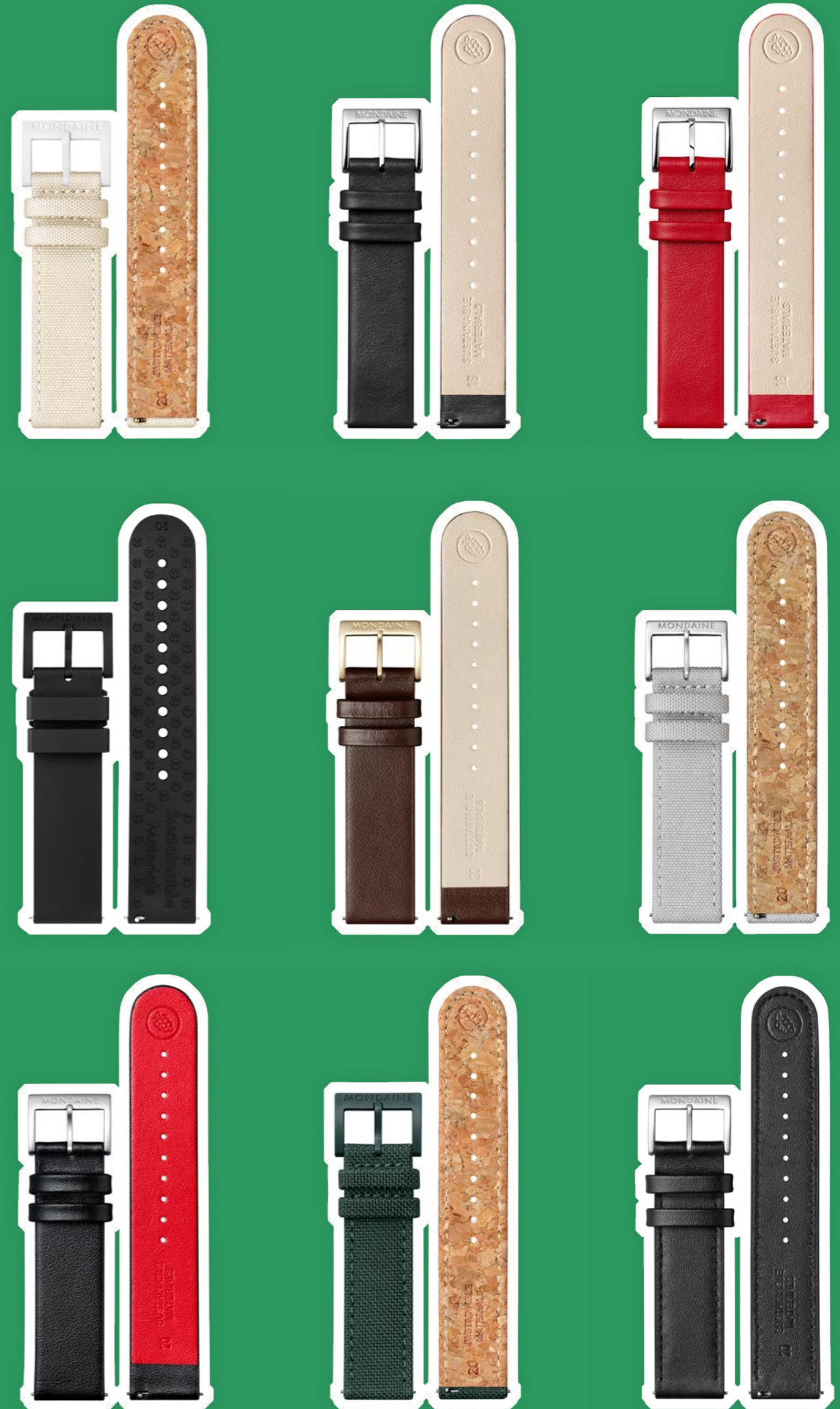
Watches are an important part of any outfit, and choosing the right watch strap is essential to completing a look. Vegan straps are made without the use of animal products, making them an **environmentally friendly** option.

We use vegan straps made from a wide range of materials, including textile from **recycled PET bottles**, **castor oil compound**, **recycled stainless steel** - composed of up to 91% recycled content - as well as plant-based materials such as **cork** or **grape leather**. In fact, vegan grape leather is one of our latest additions and consists of **75% eco-friendly plant-based** composite material and **25% recycled PET bottles**. It is high-quality, durable and best of all, meaningful. That is why we partnered with **Vegea™** - an Italian company specialized in turning waste from winemaking into a vegan leather alternative.

Everything that cannot be used at the end of the wine-making process - namely the grape marc consisting of the stems, seeds and skins - is used to make grape leather. Genuine upcycling. On top, we at Mondaine Watch Ltd. use **water-based colours** to dye the material.

In 2015, we developed a **castor oil compound material** in collaboration with **BASF**, which paved the way for the launch of our essence collection. This innovative material composition consists of **50% castor oil sourced from the wonder tree**, **48% fossil oil**, and **2% color pigments**, enhancing both sustainability and performance in our strap designs.

Moreover, we promote a more sustainable approach to fashion. **Embracing sustainability**, we have equipped all our watches with **quick-release straps**. With an interchangeable strap system, transitioning your watch style is effortless. For example, you can switch from a colorful textile strap to a classic Milanese mesh stainless steel strap in a snap. Furthermore, our interchangeable strap system ensures swift strap replacements, prolonging the lifespan of your watch. This sustainability-driven feature aligns with the values of consumers who prioritize environmental consciousness and aspire to make more **sustainable choices**.



Classic collection

ICONIC. MINIMALISTIC. TIMELESS.



First launched in 1986, this classic watch design has remained unchanged, standing the test of time. **Sustainably manufactured**, its simple and clear face is indicative of the **Bauhaus style**. Our iconic watch is a true statement, and a Swiss original. With its **timeless elegance**, the *Classic collection* has been elevated to one of the most famous Swiss watch designs.

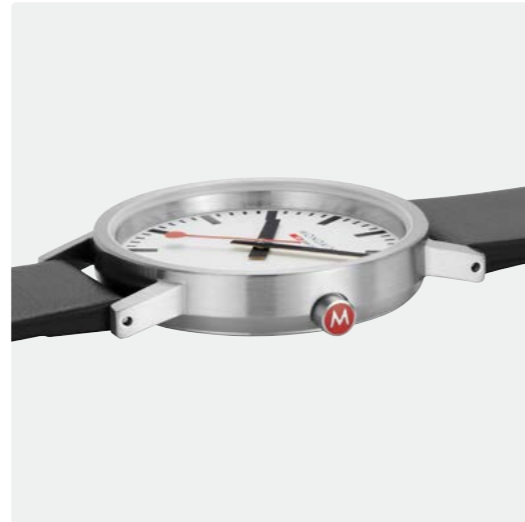
KEY FEATURES

- The purest design line
- Bold case contours
- Straps with red lining

Classic collection

A TRUE DESIGN MASTERPIECE

Developed in 1944 by the **Swiss Federal Railways** for their train stations, it was first launched by us at MONDAINE in 1986 as a wristwatch. The design has stood the test of time and remained unchanged ever since. Our *Classic collection* impresses with its meticulously designed case made out of **recycled stainless steel** which conveys a **timeless** and **minimalistic** look and feel. The red crown and the red colour on the inside of the strap are hidden design features.



Classic



Model number Size
Caliber
Case material
Case back
Crystal material
Water resistance (m / ft / atm)
Strap material
Strap width / color / code
Battery reference

A658.30323.11SBBV 30 mm
Ronda 763E
316L Stainless steel polished
316L Stainless steel pressed
Hardened mineral crystal
30 / 100 / 3
Vegan grape leather
16 mm / Black / FG3116.21Q
364



A658.30323.16SBBV 30 mm
Ronda 763E
316L Stainless steel brushed
316L Stainless steel pressed
Hardened mineral crystal
30 / 100 / 3
Vegan grape leather
16 mm / Black / FG3116.21Q.1
364



Model number Size
Caliber
Case material
Case back
Crystal material
Water resistance (m / ft / atm)
Strap material
Strap width / color / code
Battery reference

A658.30323.11SBGV 30 mm
Ronda 763E
316L Stainless steel polished
316L Stainless steel pressed
Hardened mineral crystal
30 / 100 / 3
Vegan grape leather
16 mm / Brown / FG3116.70Q
364



Classic



Model number Size
Caliber
Case material
Case back
Crystal material
Water resistance (m / ft / atm)
Strap material
Strap width / color / code
Battery reference

A660.30314.11SBBV 36 mm
Ronda 513 RL
316L Stainless steel polished
316L Stainless steel pressed
Hardened mineral crystal
30 / 100 / 3
Vegan grape leather
18 mm / Black / FG3118.21Q
371



A660.30314.16SBBV 36 mm
Ronda 513
316L Stainless steel brushed
316L Stainless steel pressed
Hardened mineral crystal
30 / 100 / 3
Vegan grape leather
18 mm / Black / FG3118.21Q.1
371



Classic



Model number Size
Caliber
Case material
Case back
Crystal material
Water resistance (m / ft / atm)
Strap material
Strap width / color / code
Battery reference

A660.30360.16SBBV 40 mm
Ronda 513
316L Stainless steel brushed
316L Stainless steel pressed
Hardened mineral crystal
30 / 100 / 3
Vegan grape leather
20 mm / Black / FG3120.21Q.1
371



A660.30360.11SBBV 40 mm
Ronda 513
316L Stainless steel polished
316L Stainless steel pressed
Hardened mineral crystal
30 / 100 / 3
Vegan grape leather
20 mm / Brown / FG3120.70Q
371



Model number Size
Caliber
Case material
Case back
Crystal material
Water resistance (m / ft / atm)
Strap material
Strap width / color / code
Battery reference

A667.30314.11SBBV 36 mm
Ronda 517 RQ
316L Stainless steel polished
316L Stainless steel pressed
Hardened mineral crystal
30 / 100 / 3
Vegan grape leather
18 mm / Black / FG3118.21Q
371



Model number Size
Caliber
Case material
Case back
Crystal material
Water resistance (m / ft / atm)
Strap material
Strap width / color / code
Battery reference

A660.30360.16SBJ 40 mm
Ronda 513
316L Stainless steel brushed
316L Stainless steel pressed
Hardened mineral crystal
30 / 100 / 3
316L Stainless steel, link bracelet
20 mm / Silver / FM22620.ST.1M
371



Classic



NO LOGO ON DIAL



NO LOGO ON DIAL



Model number Size
Caliber
Case material
Case back
Crystal material
Water resistance (m / ft / atm)
Strap material
Strap width / color / code
Battery reference

A658.30323.16OMV 30 mm
Ronda 763E
316L Stainless steel brushed
316L Stainless steel pressed
Hardened mineral crystal
30 / 100 / 3
Vegan grape leather
16 mm / Black / FG3116.21Q.1
364



A660.30314.16OMV 36 mm
Ronda 513
316L Stainless steel brushed
316L Stainless steel pressed
Hardened mineral crystal
30 / 100 / 3
Vegan grape leather
18 mm / Black / FG3118.21Q.1
371



Classic



Model number Size
Caliber
Case material
Case back
Crystal material
Water resistance (m / ft / atm)
Strap material
Strap width / color / code
Battery reference

A660.30360.40SBQ 40 mm
Ronda 513
316L Stainless steel brushed IP gold plated
316L Stainless steel pressed
Hardened mineral crystal
30 / 100 / 3
Textile from recycled PET bottles with cork lining
20 mm / Deep ocean blue / FT3120.40R
371



NO LOGO ON DIAL



Model number Size
Caliber
Case material
Case back
Crystal material
Water resistance (m / ft / atm)
Strap material
Strap width / color / code
Battery reference

A660.30360.16OMV 40 mm
Ronda 513
316L Stainless steel brushed
316L Stainless steel pressed
Hardened mineral crystal
30 / 100 / 3
Vegan grape leather
20 mm / Black / FG3120.21Q.1
371



CHECK OUT OUR CLASSIC IP GOLD COLLECTION



Model number Size
Caliber
Case material
Case back
Crystal material
Water resistance (m / ft / atm)
Strap material
Strap width / color / code
Battery reference

A660.30314.60SBS 36 mm
Ronda 513
316L Stainless steel brushed IP gold plated
316L Stainless steel pressed
Hardened mineral crystal
30 / 100 / 3
Textile strap from recycled PET bottles with cork lining
18 mm / Forest green / FT3118.60R
371



A660.30360.60SBS 40 mm
Ronda 513
316L Stainless steel brushed IP gold plated
316L Stainless steel pressed
Hardened mineral crystal
30 / 100 / 3
Textile strap from recycled PET bottles with cork lining
20 mm / Forest green / FT3120.60R
371



Classic



Model number Size
Caliber
Case material
Case back
Crystal material
Water resistance (m / ft / atm)
Strap material
Strap width / color / code
Battery reference

A660.30314.80SBU 36 mm
Ronda 513
316L Stainless steel brushed IP gold plated
316L Stainless steel pressed
Hardened mineral crystal
30 / 100 / 3
Textile strap from recycled PET bottles with cork lining
18 mm / Good grey / FT3118.80R
371



A660.30360.80SBU 40 mm
Ronda 513
316L Stainless steel brushed IP gold plated
316L Stainless steel pressed
Hardened mineral crystal
30 / 100 / 3
Textile strap from recycled PET bottles with cork lining
20 mm / Good grey / FT3120.80R
371



Classic



Model number Size
Caliber
Case material
Case back
Crystal material
Water resistance (m / ft / atm)
Strap material
Strap width / color / code
Battery reference

A660.30314.60SBF 36 mm
Ronda 513
316L Stainless steel brushed
316L Stainless steel pressed
Hardened mineral crystal
30 / 100 / 3
Textile strap from recycled PET bottles with cork lining
18 mm / Forest green / FT3118.60Q
371



A660.30360.60SBF 40 mm
Ronda 513
316L Stainless steel brushed
316L Stainless steel pressed
Hardened mineral crystal
30 / 100 / 3
Textile strap from recycled PET bottles with cork lining
20 mm / Forest green / FT3120.60Q.4
371



Model number Size
Caliber
Case material
Case back
Crystal material
Water resistance (m / ft / atm)
Strap material
Strap width / color / code
Battery reference

A660.30314.40SBD 36 mm
Ronda 513
316L Stainless steel brushed
316L Stainless steel pressed
Hardened mineral crystal
30 / 100 / 3
Textile strap from recycled PET bottles with cork lining
18 mm / Deep ocean blue / FT3118.40Q
371



A660.30360.40SBD 40 mm
Ronda 513
316L Stainless steel brushed
316L Stainless steel pressed
Hardened mineral crystal
30 / 100 / 3
Textile strap from recycled PET bottles with cork lining
20 mm / Deep ocean blue / FT3120.40Q.4
371



CHECK OUT OUR CLASSIC COLLECTION



Model number Size
Caliber
Case material
Case back
Crystal material
Water resistance (m / ft / atm)
Strap material
Strap width / color / code
Battery reference

A660.30314.80SBH 36 mm
Ronda 513
316L Stainless steel brushed
316L Stainless steel pressed
Hardened mineral crystal
30 / 100 / 3
Textile strap from recycled PET bottles with cork lining
18 mm / Good grey / FT3118.80Q.3
371



A660.30360.80SBH 40 mm
Ronda 513
316L Stainless steel brushed
316L Stainless steel pressed
Hardened mineral crystal
30 / 100 / 3
Textile strap from recycled PET bottles with cork lining
20 mm / Good grey / FT3120.80Q.2
371



Classic



Model number Size
Caliber
Case material
Case back
Crystal material
Water resistance (m / ft / atm)
Strap material
Strap width / color / code
Battery reference

A660.30314.40SBM 36 mm
Ronda 513
316L Stainless steel brushed IP gold plated
316L Stainless steel pressed
Hardened mineral crystal
30 / 100 / 3
Stainless steel, mesh milanaise
18 mm / IPG Plating / FM8918.IPGEM.1
371



Classic



Model number Size
Caliber
Case material
Case back
Crystal material
Water resistance (m / ft / atm)
Strap material
Strap width / color / code
Battery reference

A660.30314.80SBM 36 mm
Ronda 513
316L Stainless steel brushed IP gold plated
316L Stainless steel pressed
Hardened mineral crystal
30 / 100 / 3
Stainless steel, mesh milanaise
18 mm / IPG Plating / FM8918.IPGEM.1
371



Model number Size
Caliber
Case material
Case back
Crystal material
Water resistance (m / ft / atm)
Strap material
Strap width / color / code
Battery reference

A660.30314.60SBM 36 mm
Ronda 513
316L Stainless steel brushed IP gold plated
316L Stainless steel pressed
Hardened mineral crystal
30 / 100 / 3
Stainless steel, mesh milanaise
18 mm / IPG Plating / FM8918.IPGEM.1
371



A660.30360.60SBM 40 mm
Ronda 513
316L Stainless steel brushed IP gold plated
316L Stainless steel pressed
Hardened mineral crystal
30 / 100 / 3
Stainless steel, mesh milanaise
20 mm / IPG Plating / FM8920.IPGEM.1
371



Model number Size
Caliber
Case material
Case back
Crystal material
Water resistance (m / ft / atm)
Strap material
Strap width / color / code
Battery reference

A660.30314.40SBJ 36 mm
Ronda 513
316L Stainless steel brushed
316L Stainless steel pressed
Hardened mineral crystal
30 / 100 / 3
Stainless steel, mesh milanaise
18 mm / Silver / FM8918.STEM.2
371



A660.30360.40SBJ 40 mm
Ronda 513
316L Stainless steel brushed
316L Stainless steel pressed
Hardened mineral crystal
30 / 100 / 3
Stainless steel, mesh milanaise
20 mm / Silver / FM8920.STEM.4
371



Classic



Model number Size
Caliber
Case material
Case back
Crystal material
Water resistance (m / ft / atm)
Strap material
Strap width / color / code
Battery reference

A660.30314.60SBJ 36 mm
Ronda 513
316L Stainless steel brushed
316L Stainless steel pressed
Hardened mineral crystal
30 / 100 / 3
Stainless steel, mesh milanaise
18 mm / Silver / FM8918.STEM.2
371



A660.30360.60SBJ 40 mm
Ronda 513
316L Stainless steel brushed
316L Stainless steel pressed
Hardened mineral crystal
30 / 100 / 3
Stainless steel, mesh milanaise
20 mm / Silver / FM8920.STEM.4
371



CHECK OUT OUR SILVER CLASSIC COLLECTION



Model number Size
Caliber
Case material
Case back
Crystal material
Water resistance (m / ft / atm)
Strap material
Strap width / color / code
Battery reference

A660.30360.80SBJ 40 mm
Ronda 513
316L Stainless steel brushed
316L Stainless steel pressed
Hardened mineral crystal
30 / 100 / 3
Stainless steel, mesh milanaise
20 mm / Silver / FM8920.STEM.4
371



evo2 collection

BAUHAUS. MODERN. FLUID.



The *evo2 collection* has a seamless organic shape with smooth fluid lines, and the slightly rounded case offers **maximum comfort** on every wrist. As an evolution and progression of the original timeless design, *evo2* embodies **minimalism, quality** and **traditional Swiss craftsmanship**. For decades, we have consistently maintained a responsible use of resources, investigated new **eco-friendly** solutions and alternative materials. Since 2023, the *evo2* collection has underscored its **commitment to sustainability** by transitioning to eco-friendly materials.

KEY FEATURES

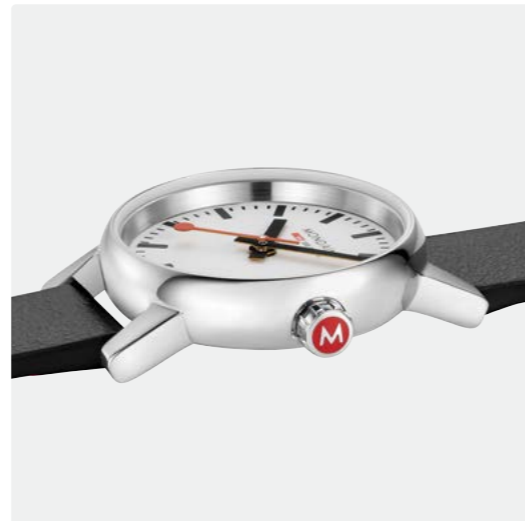
- Organic shape case
- Ergonomic fit
- Sapphire crystal glass

evo2 collection

WHERE TIME MEETS EVOLUTION

Evolved timepiece with fluid organic shapes. An evolution of our classic design, each watch in the *evo2 collection* is meticulously engineered to seamlessly blend **functionality** with modernity, ensuring it stands the test of time. **Minimalist** yet **iconic**, our evo2 watches retain the classic Swiss railway watch style, featuring the iconic red second hand and a rounded, **organic-shaped** watchcase that provides not only comfort but familiarity to the wearer.

Crafted with precision and attention to detail, our evo2 timepieces boast a case that exudes effortless style while offering a perfect fit on the wrist, thanks to their refined organic form. Available in a range of sizes starting from a delicate 26mm case for smaller wrists to a bold 43mm statement piece, there's a watch to suit every individual style and preference.



evo2

Model number Size
Caliber
Case material
Case back
Crystal material
Water resistance (m / ft / atm)
Strap material
Strap width / color / code
Battery reference



MSE.26110.LBV 26 mm
Ronda 763E
316L Stainless steel polished
316L Stainless steel pressed
Sapphire crystal
30 / 100 / 3
Vegan grape leather
12 mm / Red / FG3112.20Q
364



MSE.30110.LBV 30 mm
Ronda 503
316L Stainless steel polished
316L Stainless steel pressed
Sapphire crystal
30 / 100 / 3
Vegan grape leather
16 mm / Black / FG3116.20Q
371



Model number Size
Caliber
Case material
Case back
Crystal material
Water resistance (m / ft / atm)
Strap material
Strap width / color / code
Battery reference

MSE.35110.LBV 35 mm
Ronda 503
316L Stainless steel polished
316L Stainless steel pressed
Sapphire crystal
30 / 100 / 3
Vegan grape leather
18 mm / Black / FG3118.20Q
371



evo2



Model number Size
Caliber
Case material
Case back
Crystal material
Water resistance (m / ft / atm)
Strap material
Strap width / color / code
Battery reference

MSE.30210.LBV 30 mm
Ronda 509
316L Stainless steel polished
316L Stainless steel pressed
Sapphire crystal
30 / 100 / 3
Vegan grape leather
16 mm / Black / FG3116.20Q
371



MSE.40210.LBV 40 mm
Ronda 519.S
316L Stainless steel polished
316L Stainless steel pressed
Sapphire crystal
30 / 100 / 3
Vegan grape leather
20 mm / Black / FG16220.20Q
371



evo2



Model number Size
Caliber
Case material
Case back
Crystal material
Water resistance (m / ft / atm)
Strap material
Strap width / color / code
Battery reference

MSE.26110.LCV 26 mm
Ronda 763E
316L Stainless steel polished
316L Stainless steel pressed
Sapphire crystal
30 / 100 / 3
Vegan grape leather
12 mm / Red / FG3112.30Q
364



MSE.35110.LCV 35 mm
Ronda 503
316L Stainless steel polished
316L Stainless steel pressed
Sapphire crystal
30 / 100 / 3
Vegan grape leather
18 mm / Red / FG3118.30Q
371



Model number Size
Caliber
Case material
Case back
Crystal material
Water resistance (m / ft / atm)
Strap material
Strap width / color / code
Battery reference

MSE.40112.LGV 40 mm
Ronda 513 RL
316L Stainless steel brushed IP gold plated
316L Stainless steel pressed
Sapphire crystal
30 / 100 / 3
Vegan grape leather
20 mm / Brown / FG3120.70R.1
371



Model number Size
Caliber
Case material
Case back
Crystal material
Water resistance (m / ft / atm)
Strap material
Strap width / color / code
Battery reference

MSE.30210.LCV 30 mm
Ronda 509
316L Stainless steel polished
316L Stainless steel pressed
Sapphire crystal
30 / 100 / 3
Vegan grape leather
16 mm / Red / FG3116.30Q
371



evo2



Model number Size
Caliber
Case material
Case back
Crystal material
Water resistance (m / ft / atm)
Strap material
Strap width / color / code
Battery reference

MSE.26110.SM 26 mm
Ronda 763E
316L Stainless steel brushed
316L Stainless steel pressed
Sapphire crystal
30 / 100 / 3
Stainless steel, mesh milanaise
12 mm / Silver / FM8912.STEM.4
364



MSE.35110.SM 35 mm
Ronda 503
316L Stainless steel brushed
316L Stainless steel pressed
Sapphire crystal
30 / 100 / 3
Stainless steel, mesh milanaise
18 mm / Silver / FM8918.STEM.2
371



evo2



Model number Size
Caliber
Case material
Case back
Crystal material
Water resistance (m / ft / atm)
Strap material
Strap width / color / code
Battery reference

MSE.43120.LB 43 mm
Ronda 513 RL
316L Stainless steel polished
316L Stainless steel pressed
Sapphire crystal
30 / 100 / 3
Vegan grape leather
22 mm / Black / FG16822.20Q
371



MSE.43110.SJ 43 mm
Ronda 513 RL
316L Stainless steel brushed
316L Stainless steel pressed
Sapphire crystal
30 / 100 / 3
Stainless steel, mesh milanaise
22 mm / Silver / FM8922.STEM.2
371



Model number Size
Caliber
Case material
Case back
Crystal material
Water resistance (m / ft / atm)
Strap material
Strap width / color / code
Battery reference

MSE.30210.SM 30 mm
Ronda 509
316L Stainless steel brushed
316L Stainless steel pressed
Sapphire crystal
30 / 100 / 3
Stainless steel, mesh milanaise
16 mm / Silver / FM8916.STEM.4
371



MSE.40210.SM 40 mm
Ronda 519.S
316L Stainless steel brushed
316L Stainless steel pressed
Sapphire crystal
30 / 100 / 3
Stainless steel, mesh milanaise
20 mm / Silver / FM8920.STEM.4
371



CHECK OUT
OUR **evo2**
COLLECTION



Model number Size
Caliber
Case material
Case back
Crystal material
Water resistance (m / ft / atm)
Strap material
Strap width / color / code
Battery reference

MSE.35610.LBV 35 mm
Sellita SW200-1
316L Stainless steel polished
316L Stainless steel see-through
Sapphire crystal
50 / 165 / 5
Vegan grape leather
18 mm / Black / FG3118.20Q
-



MSE.40610.LBV 40 mm
Sellita SW200-1
316L Stainless steel polished
316L Stainless steel see-through
Sapphire crystal
50 / 165 / 5
Vegan grape leather
20 mm / Black / FG3120.20Q
-



Model number Size
Caliber
Case material
Case back
Crystal material
Water resistance (m / ft / atm)
Strap material
Strap width / color / code
Battery reference

MSE.35610.SM 35 mm
Sellita SW200-1
316L Stainless steel brushed
316L Stainless steel see-through
Sapphire crystal
50 / 165 / 5
Stainless steel, mesh milanaise
18 mm / Silver / FM8918.STEM.3
-



MSE.40610.SM 40 mm
Sellita SW200-1
316L Stainless steel brushed
316L Stainless steel see-through
Sapphire crystal
50 / 165 / 5
Stainless steel, mesh milanaise
20 mm / Silver / FM8920.STEM.5
-





essence collection

SUSTAINABLE. INNOVATIVE. CONSCIOUS.



Innovation and sustainability - right on time. Crafted with **eco-friendly** materials in every detail—from the case to the strap and packaging—our *essence collection* embodies sustainability without compromising style. Here at MONDAINE, we are proud to present what may be the most sustainable watches in the world. Our **commitment** to environmental responsibility is woven into every aspect of the essence collection. By using castor oil from the wonder tree, cork, and recycled PET bottles, we have transformed traditional watchmaking into a platform for iconic self-expression and **eco-conscious living**.

KEY FEATURES

- Sculpted case form
- Castor oil compound case
- Eco-friendly materials

essence collection

THE ECO-FRIENDLY WATCH

Here at MONDAINE, we have seamlessly blended Swiss watchmaking heritage and design with a **forward-thinking commitment** to our planet's future. Developed using **eco-friendly sources**, the essence collection is a testament to our dedication to sustainability. Each watch is not just a timepiece but a symbol of our collective responsibility to protect and preserve the world we live in. Join us in embracing innovation and sustainability, right on time. Choose the essence collection and make a statement that's as timeless as it is eco-friendly.



essence

Model number Size
Caliber
Case material
Case back
Crystal material
Water resistance (m / ft / atm)
Strap material
Strap width / color / code
Battery reference



MS1.32110.RB 32 mm
Ronda 763E
Castor oil compound*
Castor oil compound* pressed
Hardened mineral crystal
30 / 100 / 3
Castor oil compound**
16 mm / Black / FP16916.23B
364



MS1.41110.RB 41 mm
Ronda 513 RL
Castor oil compound*
Castor oil compound* pressed
Hardened mineral crystal
30 / 100 / 3
Castor oil compound**
20 mm / Black / FP16920.23B
371



Model number Size
Caliber
Case material
Case back
Crystal material
Water resistance (m / ft / atm)
Strap material
Strap width / color / code
Battery reference

MS1.32120.RB 32 mm
Ronda 763E
Castor oil compound*
Castor oil compound* pressed
Hardened mineral crystal
30 / 100 / 3
Castor oil compound**
16 mm / Black / FP16916.23B
364



MS1.41120.RB 41 mm
Ronda 513
Castor oil compound*
Castor oil compound* pressed
Hardened mineral crystal
30 / 100 / 3
Castor oil compound**
20 mm / Black / FP16920.23B
371



essence



Model number Size
Caliber
Case material
Case back
Crystal material
Water resistance (m / ft / atm)
Strap material
Strap width / color / code
Battery reference

MS1.32140.LD 32 mm
Ronda 763E
Castor oil compound*
Castor oil compound* pressed
Hardened mineral crystal
30 / 100 / 3
Textile strap from recycled PET bottles with cork lining
16 mm / Blue / FT3116.40D
364



MS1.41140.LD 41 mm
Ronda 513
Castor oil compound*
Castor oil compound* pressed
Hardened mineral crystal
30 / 100 / 3
Textile strap from recycled PET bottles with cork lining
20 mm / Blue / FT3120.40D
371



CASTOR OIL COMPOUND

*** CASE COMPOSITION**

- 40% castor oil from wonder tree
- 30% glass fiber
- 28% fossil oil
- 2% color pigments

**** STRAP COMPOSITION**

- 50% castor oil from wonder tree
- 48% fossil oil
- 2% color pigments



Model number Size
Caliber
Case material
Case back
Crystal material
Water resistance (m / ft / atm)
Strap material
Strap width / color / code
Battery reference

MS1.32160.LF 32 mm
Ronda 763E
Castor oil compound*
Castor oil compound* pressed
Hardened mineral crystal
30 / 100 / 3
Castor oil compound**
16 mm / Green / FT3116.60F
364



MS1.41160.LF 41 mm
Ronda 513
Castor oil compound*
Castor oil compound* pressed
Hardened mineral crystal
30 / 100 / 3
Castor oil compound**
20 mm / Green / FT3120.60F
371



Simply Elegant collection

ELEGANT. SLEEK. COMFORTABLE.



Discover the sophistication of our *Simply Elegant collection* – Swiss craftsmanship at its finest. With a **slim profile** measuring only 6.2 mm, these watches effortlessly blend elegance with simplicity.

The thoughtfully designed lugs ensure a **comfortable** and **adaptable** fit on any wrist, allowing the watch to sit comfortably flat for a refined experience.

KEY FEATURES

- Ultra-slim case
- Ergonomic fit
- Sapphire crystal

Simply Elegant collection

WHERE SOPHISTICATION MEETS SIMPLICITY

This collection blends **aesthetics** with minimalist design, offering understated elegance in every detail. The slim mesh milanaise strap adds **classic refinement**, making it the perfect complement to both business attire and casual wear. Simply put, our *Simply Elegant* collection makes no compromises - elegant yet simple, distinctive yet understated. Here at MONDAINE, watches are crafted with Swiss quality and tradition in our Solothurn factory, tested for water resistance and backed by a two-year international guarantee. With the Simply Elegant collection, **sophistication** and **simplicity** converge to create a timepiece that transcends trends, making it a timeless companion for any occasion.



Simply Elegant



Model number Size
Caliber
Case material
Case back
Crystal material
Water resistance (m / ft / atm)
Strap material
Strap width / color / code
Battery reference

A400.30351.16SBZ 36 mm
Ronda 1063
316L Stainless steel brushed
316L Stainless pressed
Sapphire crystal
30 / 100 / 3
Stainless steel, mesh milanaise
20 mm / Silver / FM8920.STEM.4
321



A638.30350.16SBZ 40 mm
Ronda 1063
316L Stainless steel brushed
316L Stainless pressed
Sapphire crystal
30 / 100 / 3
Stainless steel, mesh milanaise
22 mm / Silver / FM8922.STEM.2
321



The Original collection

AUTOMATIC. MINIMALISTIC. ROBUST.



The Original collection pays tribute to the iconic Official Swiss Railways clock. Our robust watch case exudes **elegance** and **sportiness** taking MONDAINE's minimalistic design to new heights. The **automatic movement** with a power reserve of 36 hours can be admired through the glass case back. Emphasizing our **commitment on sustainability**, the Original core collection became completely vegan since 2023.

KEY FEATURES

- Automatic movement
- See-through case back
- BackLight technology

The Original collection

TIME TO SET A BOLD STATEMENT

The *Original automatic* watch boasts a **robust design** inspired by the renowned Official Swiss Railways clock. Crafted from **stainless steel**, our traditional white dial features black hour and minute markers. A hidden design feature is the **see-through case back**, which allows for a view of the **automatic movement**.

Additionally, our watches are equipped with innovative **BackLight technology**, illuminating the underside of the hands in the dark and lighting up the dial for enhanced visibility.



The Original



Model number Size	MST.4161B.LBV 41 mm
Caliber	Sellita SW200-1
Case material	316L Stainless steel brushed
Case back	316L Stainless steel see-through
Crystal material	Sapphire crystal
Water resistance (m / ft / atm)	50 / 165 / 5
Strap material	Vegan grape leather
Strap width / color / code	20 mm / Black / FG25320.20Q.1
Battery reference	-



Model number Size	MST.4161B.SJ 41 mm
Caliber	Sellita SW200-1
Case material	316L Stainless steel brushed
Case back	316L Stainless steel see-through
Crystal material	Sapphire crystal
Water resistance (m / ft / atm)	50 / 165 / 5
Strap material	Stainless steel, link bracelet
Strap width / color / code	20 mm / Silver / FM22720.ST.EM1
Battery reference	-



BackLight Technology

Applied to the back side of the hands, allows visibility of the hands at night, without impact to the design.

stop2go collection

PRECISE. UNIQUE. ICONIC.



With a strikingly robust design and thick, **crown-less case**, our *stop2go collection* recreates the iconic design of the Swiss Railways Station clock like never before. The revolutionary **stop2go movement**, exclusive to MONDAINE, showcases a 2-second time stop and mirrors the unique technology and precision of these famous clocks. Precisely those crucial 2 seconds gave the original **Master Clock** the time to synchronize and align with all railway clocks across the country every minute ensuring the perfect accuracy of the Swiss trains.

KEY FEATURES

- Exclusive stop2go movement
- BackLight technology
- Super-LumiNova® technology

stop2go collection

A MOVEMENT THAT GOES BEYOND THE ORDINARY

The *stop2go* collection effortlessly blends style, functionality, and a touch of boldness. Our watches feature the worldwide exclusive and unique **stop2go movement**. The glass on the dial is made from scratch resistant sapphire crystal with anti-reflective coating. While the white dial watches are equipped with **BackLight technology**, the black dial watches showcase **SuperLuminova** on top of the hands, both ensuring that time can be effortlessly read, regardless of the ambient light.

The collection offers three 41mm case and two 34mm case watches, a stainless-steel or a vegan grape leather strap and a black or white dial option. Our watches have a practical **interchangeable strap system** making it very versatile and allowing you to create multiple unique looks without having to invest in several watches.

All stop2go models come in a set with a 'time setting pen' to easily adjust time and align hands without the need of a crown.

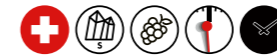


stop2go

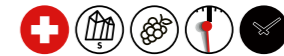
Model number Size
Caliber
Case material
Case back
Crystal material
Water resistance (m / ft / atm)
Strap material
Strap width / color / code
Battery reference



MST.3401B.LBV.SET 34 mm
stop2go
316L Stainless steel brushed
316L stainless steel screw-in
Sapphire crystal
30 / 100 / 3
Vegan grape leather
20 mm / Black / FG25316.20Q.1
CR2032



MST.4101B.LBV.2SE 41 mm
stop2go
316L Stainless steel brushed
316L stainless steel screw-in
Sapphire crystal
30 / 100 / 3
Vegan grape leather
20 mm / Black / FG25320.20Q.1
CR2032



Model number Size
Caliber
Case material
Case back
Crystal material
Water resistance (m / ft / atm)
Strap material
Strap width / color / code
Battery reference

MST.34020.LBV.SET 34 mm
stop2go
316L Stainless steel brushed
316L stainless steel screw-in
Sapphire crystal
30 / 100 / 3
Vegan grape leather
20 mm / Black / FG25316.20Q.1
CR2032



MST.41020.LBV.2SE 41 mm
stop2go
316L Stainless steel brushed
316L stainless steel screw-in
Sapphire crystal
30 / 100 / 3
Vegan grape leather
20 mm / Black / FG25320.20Q.1
CR2032



stop2go



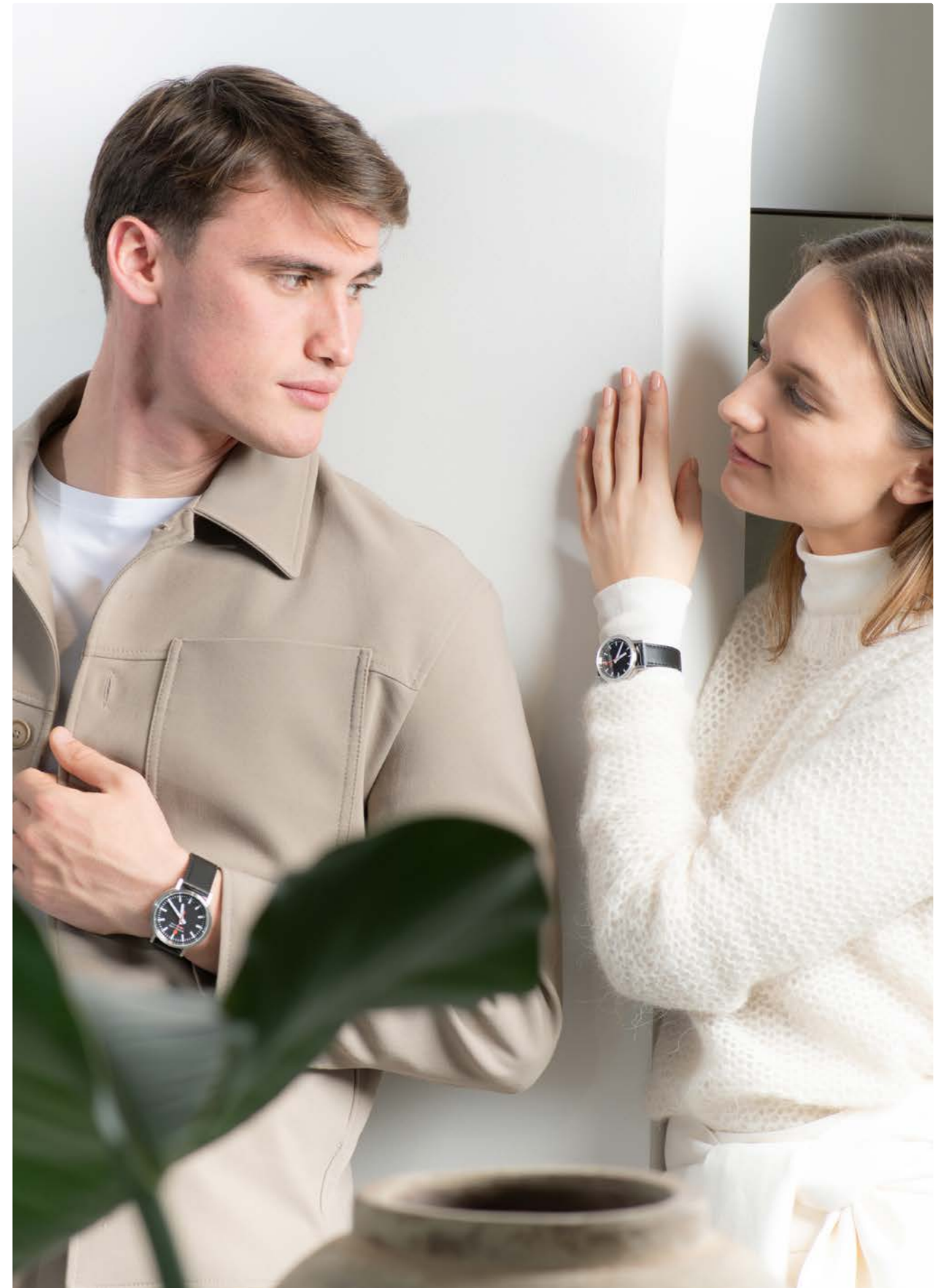
Model number Size	MST.4101B.SJ.2SE 41 mm
Caliber	stop2go
Case material	316L Stainless steel brushed
Case back	316L stainless steel screw-in
Crystal material	Sapphire crystal
Water resistance (m / ft / atm)	30 / 100 / 3
Strap material	Stainless steel, link bracelet
Strap width / color / code	20 mm / Silver / FM23020.ST.EM1
Battery reference	CR2032



CHECK OUT OUR HOWTO VIDEO

All watches come with a **time setting pen.**





Cushion collection

SWISS MADE. CHRONOGRAPH. HERITAGE.



The *Cushion collection* introduces you to the world of **fine watches**. Imagine a circle inside a square and you will immediately picture an elegant **cushion-shaped** timepiece which allows you to measure elapsed time with precision thanks to its chronograph.

Sustainably manufactured, our Cushion collection is linked to MONDAINE's heritage through its **vintage shape** and its iconic dial. Fluidity and nonconformity make this collection **eternally adaptable**.

KEY FEATURES

- Chrono options
- Cushion-shaped case inspired by vintage style
- Double-domed sapphire crystal, anti-reflective coating

Cushion collection

A HIGHLY PRECISE CHRONOGRAPH

Grand Cushion and **Petite Cushion** are available in two case sizes: 41 and 31 mm. Inside the polished case of the Grand Cushion watch is a reliable and highly precise **Chronograph date function**. Thanks to our practical **interchangeable strap system**, changing straps can be done quickly and easily.

LONG LASTING AFTERGLOW IN THE DARK

Super-LumiNova® pigments are the choice of our Swiss watch company for the highest possible afterglow performance. Mixed with a suitable specific binder, this effect is placed on **MSL.41440.LD.SET** and **MSL.41460.LF.SET** white hands (red second hand is not included). It works like a light storage, where light charges the pigments and afterwards the light is continuously emitted. It charges with sunlight or artificial light. Super-LumiNova® or SLN indicates Swiss Made and it is a statement of the Swiss quality.



Cushion



Model number Size
Caliber
Case material
Case back
Crystal material
Water resistance (m / ft / atm)
Strap material
Strap width / color / code
Battery reference

MSL.31110.LBV 31 mm
Ronda 503
316L Stainless steel polished
316L Stainless steel pressed
Double domed sapphire crystal, anti-reflective coating
50 / 165 / 5
Vegan grape leather
16 mm / Black / FG3116.21Q
371



MSL.31110.LCV 31 mm
Ronda 503
316L Stainless steel polished
316L Stainless steel pressed
Double domed sapphire crystal, anti-reflective coating
50 / 165 / 5
Vegan grape leather
16 mm / Red / FG3116.30Q
371



Model number Size
Caliber
Case material
Case back
Crystal material
Water resistance (m / ft / atm)
Strap material
Strap width / color / code
Battery reference

MSL.31110.SM 31 mm
Ronda 503
316L Stainless steel polished
316L Stainless steel pressed
Double domed sapphire crystal, anti-reflective coating
50 / 165 / 5
316L Stainless steel
16 mm / Silver / FM8916.STEM.5
371



Cushion



CHECK OUT OUR BLACK CUSHION



+ EXTRA STRAP*



+ EXTRA STRAP*



Model number Size
Caliber
Case material
Case back
Crystal material
Water resistance (m / ft / atm)
Strap material
Strap width / color / code
Battery reference

MSL.41410.LBV.SET 41 mm
Ronda 5030
316L Stainless steel polished
316L Stainless steel screw-in
Double domed sapphire crystal, anti-reflective coating
50 / 165 / 5
Vegan grape leather
20 mm / Black / FG3120.21Q + extra stap*
395



MSL.41440.LD.SET 41 mm
Ronda 5030
316L Stainless steel polished
316L Stainless steel screw-in
Double domed sapphire crystal, anti-reflective coating
50 / 165 / 5
Textile from recycled PET bottles with cork lining
20 mm / Blue / FT3120.40Q + extra stap*
395



+ EXTRA STRAP*

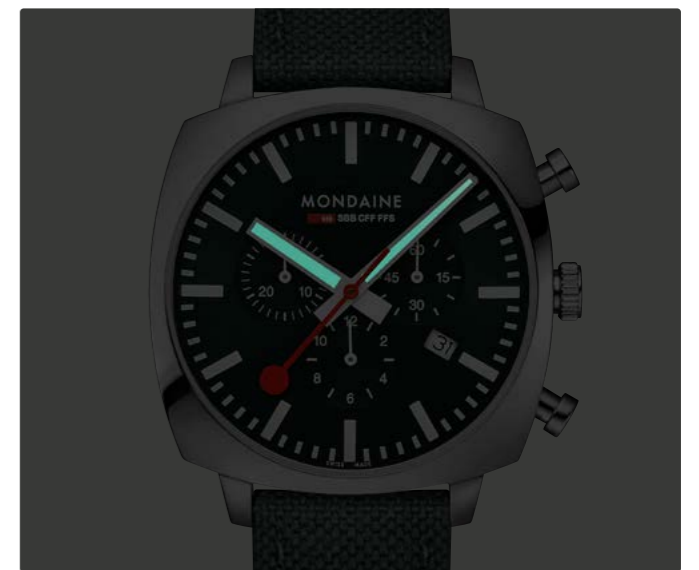


Model number Size
Caliber
Case material
Case back
Crystal material
Water resistance (m / ft / atm)
Strap material
Strap width / color / code
Battery reference

MSL.41460.LF.SET 41 mm
Ronda 5030
316L Stainless steel polished
316L Stainless steel screw-in
Double domed sapphire crystal, anti-reflective coating
50 / 165 / 5
Textile from recycled PET bottles with cork lining
20 mm / Green / FT3120.60Q + extra stap*
395



(*) product comes with additional strap FM8920.STEM.6



Neo collection

CLASSIC. SOPHISTICATED. SPORTY.



Inspired by the classic panda look, the *Neo collection* plays with this famous dial design, offering a reinterpretation by blending it seamlessly with the iconic Swiss Railways station design.

Our Neo watches boast the striking minimalistic look and characteristic red second hand MONDAINE is known for yet offer a new twist with the three integrated sub-dials in different colour combinations.

KEY FEATURES

- Chronograph watches
- Sapphire crystal with anti-reflective coating
- Super-LumiNova® hands on MSD.41420.LBV

Neo collection

WHEN A CLASSIC MEETS A CLASSIC

There is something very appealing in the minimalistic, yet impressive look of a white dial matched with contrasting black subdials, the classic **panda dial**. First released in the 1960's with the intention to increase readability, this dial soon became a popular look that was interpreted in many ways by the watch industry. We at MONDAINE now merge this classic with our very own **timeless** and **minimalistic** design creating an irresistibly appealing fusion of two watch classics.

The Neo chronographs feature a masculine 41mm brushed stainless steel case that introduces a new shape unique to this line. Our timepieces all have a date display and **chronograph function** allowing the wearer to track the date and measure elapsed time with precision. The dials are protected by sapphire crystal with **anti-reflective coating**, a strong and scratch resistant material and are paired with a black **vegan grape leather** strap.



Neo



Model number Size
Caliber
Case material
Case back
Crystal material
Water resistance (m / ft / atm)
Strap material
Strap width / color / code
Battery reference

MSD.41410.LBV 41 mm
Ronda 5030
316L Stainless steel brushed
316L Stainless steel pressed
Sapphire crystal, anti-reflective coating
50 / 165 / 5
Vegan grape leather
20 mm / Black / FG3120.20Q.1
395

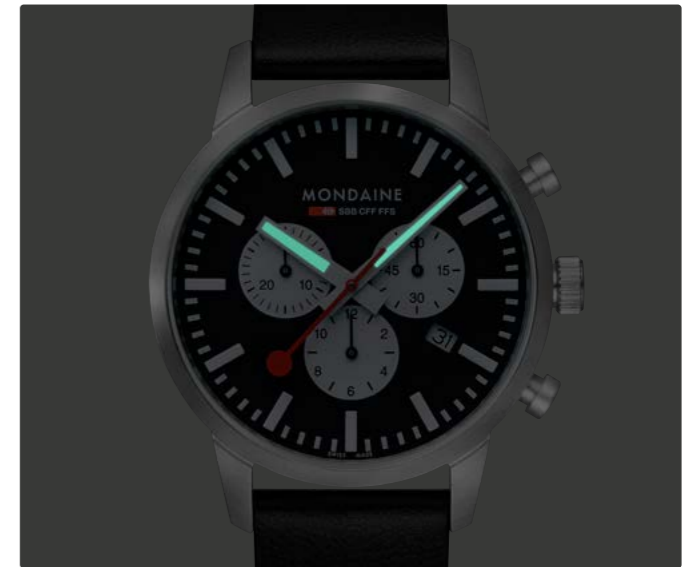
MSD.41411.LBV 41 mm
Ronda 5030
316L Stainless steel brushed
316L Stainless steel pressed
Sapphire crystal, anti-reflective coating
50 / 165 / 5
Vegan grape leather
20 mm / Black / FG3120.20Q.1
395



Model number Size
Caliber
Case material
Case back
Crystal material
Water resistance (m / ft / atm)
Strap material
Strap width / color / code
Battery reference

MSD.41420.LBV 41 mm
Ronda 5030
316L Stainless steel brushed
316L Stainless steel pressed
Sapphire crystal, anti-reflective coating
50 / 165 / 5
Vegan grape leather
20 mm / Black / FG3120.20Q.1
395





Super-Luminova® Technology

The chronograph with the black dial and white subdial is equipped with **Super-LumiNova®** on the top of the hands ensuring that time can be effortlessly read, regardless of the ambient light.



Clocks collection

ORIGINAL. ICONIC. TIMELESS.



We at MONDAINE set standards with our excellent readability clocks. Our design mirrors that of the Swiss railways clock that was originally designed by the engineer *Hans Hilfiker*.

The **minimalistic** and clean look of the clock, reminiscent of the **Bauhaus style**, turns it into a true icon. The characteristic **red second hand** soon became our most recognizable feature.

KEY FEATURES

- The Official Swiss Railways Station Clock
- Iconic Swiss design
- Sweeping hands

Clocks collection

INDUSTRIAL DESIGN ON THE WALL

Our clocks bring a piece of industrial design history into any home. Conceived in Switzerland, made for the world, our distinctive timepieces for the wall, the pocket, the nightstand or desktop are useful home décor pieces of lasting value. Thanks to our **minimalistic** yet functional **Bauhaus-style design**, they continue to be just as much of a **Swiss icon** as ever and makes a real impact in either a living room or an office. Every MONDAINE clock in the official Swiss railway clock design brings a piece of industrial design history into the home.



Clocks



Model number Size
Caliber
Case material
Case back
Crystal material
Water resistance (m / ft / atm)
Battery reference

A990.CLOCK.16SBB 250 mm
Seiko 44808V
Aluminium brushed
Case back with screws
Hardened mineral crystal
Dust resistant
Lithium AA



A995.CLOCK.16SBB 400 mm
Seiko 44803N
Aluminium brushed
Case back with screws
Hardened mineral crystal
Dust resistant
Lithium AA



Model number Size
Caliber
Case material
Case back
Crystal material
Water resistance (m / ft / atm)
Battery reference

A990.CLOCK.11SBC 250 mm
Seiko 44808V
Aluminium red
Case back with screws
Hardened mineral crystal
Dust resistant
Lithium AA



A990.CLOCK.64SBB 250 mm
Seiko 44808V
Aluminium black
Case back with screws
Hardened mineral crystal
Dust resistant
Lithium AA



stop2go Wi-Fi Wall Clock

AN HOMAGE TO THE SWISS RAILWAYS CLOCK

Of all our clocks, the *stop2go wall clock* is the one that most closely resembles the original Swiss station clock. It not only has the same **iconic** and **minimalistic** design and the characteristic red second hand, but also features the unique and exclusive **stop2go movement** resembling that of the train station clocks. Just like the clocks across Swiss Railways Stations, the distinctive **red second hand** of the wristwatch makes a full circle turn in 58 seconds and then waits for 2 seconds when it reaches 12 o'clock, allowing the minute hand to elegantly jump to the next minute. Precisely those crucial 2 seconds, gave the original station clock the time for the **Mother**

Clock to synchronize and align with all railway clocks across the country every minute. This meticulous **synchronization** process not only ensured perfect accuracy of the Swiss railways timetable but also contributed to the renowned reputation of the Swiss for their unrivalled punctuality. Our *stop2go collection* pays tribute to this heritage showcasing a clever movement that lets time stand still just like the railway station clock. **Iconic industrial design** with WiFi connection. The MONDAINE stop2go WiFi wall clock offers an easier user experience thanks to a one-time setup via WiFi.



Model number Size	MSM.25511 250 mm
Caliber	SMART MVMT
Case material	Aluminium brushed
Case back	Case back with screws
Crystal material	Hardened mineral crystal
Water resistance (m / ft / atm)	Dust resistant
Battery reference	Lithium AA





Model number | Size
Caliber
Case material
Case back
Crystal material
Water resistance (m / ft / atm)
Battery reference

A995.CLOCK.17SBV | 400 mm
 Seiko 44808N
 Aluminium brushed
 Case back with screws
 Hardened mineral crystal
 Dust resistant
 Lithium AA



A995.CLOCK.17SBG | 400 mm
 Seiko 44808V
 Aluminium brushed IP gold plated
 Case back with screws
 Hardened mineral crystal
 Dust resistant
 Lithium AA



Model number | Size
Caliber
Case material
Case back
Crystal material
Water resistance (m / ft / atm)
Battery reference

A997.MCAL.16SBB.1 | 125 mm
 Wellgain W-608
 Aluminium brushed
 Case back with screws
 Hardened mineral crystal
 Dust resistant
 Lithium AA



A997.MCAL.46SBV.1 | 125 mm
 Wellgain W-608
 Aluminium brushed silver
 Case back with screws
 Hardened mineral crystal
 Dust resistant
 Lithium AA



CHECK OUT OUR
 SILVER MINI
 ALARM CLOCKS
 COLLECTION



Model number | Size
Caliber
Case material
Case back
Crystal material
Water resistance (m / ft / atm)
Battery reference

A995.CLOCK.17SBK | 400 mm
 Seiko 44808V
 Aluminium brushed IP rose gold plated
 Case back with screws
 Hardened mineral crystal
 Dust resistant
 Lithium AA



Model number | Size
Caliber
Case material
Case back
Crystal material
Water resistance (m / ft / atm)
Battery reference

A997.MCAL.66SBV.1 | 125 mm
 Wellgain W-608
 Aluminium brushed silver
 Case back with screws
 Hardened mineral crystal
 Dust resistant
 Lithium AA



A997.MCAL.86SBV.1 | 125 mm
 Wellgain W-608
 Aluminium brushed silver
 Case back with screws
 Hardened mineral crystal
 Dust resistant
 Lithium AA



Clocks



Model number | Size
Caliber
Case material
Case back
Crystal material
Water resistance (m / ft / atm)
Battery reference

A660.30318.81SBB | 50 mm
 Ronda 513 RL
 Aluminium brushed
 316L Stainless steel pressed
 Hardened mineral crystal
 Dust resistant
 371



A660.30318.82SBK | 50 mm
 Ronda 513
 Aluminium brushed copper
 316L Stainless steel pressed
 Hardened mineral crystal
 Dust resistant
 371



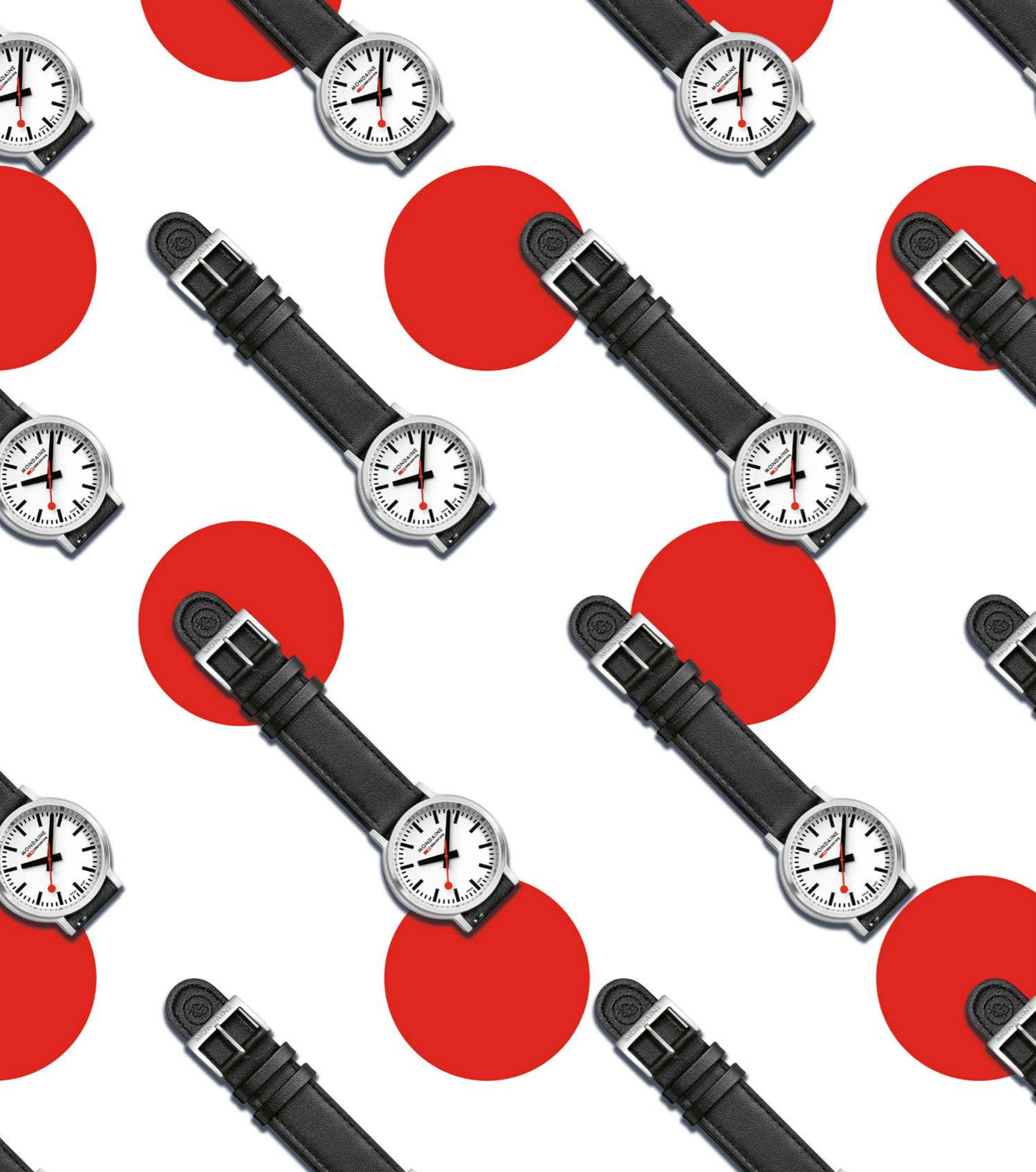
Model number | Size
Caliber
Case material
Case back
Crystal material
Water resistance (m / ft / atm)
Battery reference

MSM.64410 | 50 mm
 Wellgain MS-408
 Metal
 316L Stainless steel pressed
 Hardened mineral crystal
 Dust resistant
 Maxell SR44W



A660.30316.11SBB | 43 mm
 Ronda 513
 316L Stainless steel polished
 316L Stainless steel pressed
 Hardened mineral crystal
 Dust resistant
 371





Straps . . .

Our assortment includes **sustainable** watch straps made of **vegan grape leather**, **textile from recycled PET bottles**, **recycled stainless steel**, **castor oil compound**, **cork** for every wristwatch. Starting 2022, we replaced the cow leather material used for straps production with **grape leather**, which is made out of the waste material of the wine industry.

All straps included in our active collection are **entirely vegan**. Our straps are strong and durable, with a fine selection of colors. All watches come with a practical **strap replacement system** (*Quick Release*) that makes it very easy to change the straps.

12mm



Strap reference | Size
Kit reference
Strap color
Buckle color/finishing
Material

FM8912.STEM.4 | 12 mm
 FMM.8912.STEM.4.K
 Silver
 Silver, brushed
 Metal bracelet mesh milanaise QR



Strap reference | Size
Kit reference
Strap color
Buckle color/finishing
Material

FM8912.STEM.5 | 12 mm
 FMM.8912.STEM.5.K
 Silver
 Silver, polished
 Metal bracelet mesh milanaise QR



Strap reference | Size
Kit reference
Strap color
Buckle color/finishing
Material

FG3112.20Q | 12 mm
 FGM.3112.20Q.K
 Black
 Silver, polished
 Vegan grape leather strap,
 beige lining QR



Strap reference | Size
Kit reference
Strap color
Buckle color/finishing
Material

FG3112.30Q | 12 mm
 FGM.3112.30Q.K
 Red
 Silver, polished
 Vegan grape leather strap,
 beige lining QR

16mm



Strap reference | Size
Kit reference
Strap color
Buckle color/finishing
Material

FM8916.STEM.4 | 16 mm
 FMM.8916.STEM.4.K
 Silver
 Silver, brushed
 Metal bracelet mesh milanaise QR



Strap reference | Size
Kit reference
Strap color
Buckle color/finishing
Material

FM8916.STEM.5 | 16 mm
 FMM.8916.STEM.5.K
 Silver
 Silver, polished
 Metal bracelet mesh milanaise QR



Strap reference | Size
Kit reference
Strap color
Buckle color/finishing
Material

FP16916.23B | 16 mm
 FPM.16916.23B.K
 Black
 Black, bio based polyamide
 Castor oil compound: 50% castor
 oil from wonder tree, 48% fossil oil,
 2% color pigments

16mm



Strap reference | Size
Kit reference
Strap color
Buckle color/finishing
Material

FG25316.20Q.1 | 16 mm
 FGM.25316.20Q.1.K
 Black
 Silver, brushed
 Vegan grape leather strap



Strap reference | Size
Kit reference
Strap color
Buckle color/finishing
Material

FG3116.21Q | 16 mm
 FGM.3116.21Q.K
 Black
 Silver, polished
 Vegan grape leather strap,
 red lining QR



Strap reference | Size
Kit reference
Strap color
Buckle color/finishing
Material

FG3116.21Q.1 | 16 mm
 FGM.3116.21Q.1.K
 Black
 Silver, brushed
 Vegan grape leather strap,
 red lining QR



Strap reference | Size
Kit reference
Strap color
Buckle color/finishing
Material

FG3116.70Q | 16 mm
 FGM.3116.70Q.K
 Brown
 Silver, polished
 Vegan grape leather strap,
 red lining QR



Strap reference | Size
Kit reference
Strap color
Buckle color/finishing
Material

FG3116.20Q | 16 mm
 FGM.3116.20Q.K
 Black
 Silver, polished
 Vegan grape leather strap,
 beige lining QR



Strap reference | Size
Kit reference
Strap color
Buckle color/finishing
Material

FG3116.30Q | 16 mm
 FGM.3116.30Q.K
 Red
 Silver, polished
 Vegan grape leather strap,
 beige lining QR



Strap reference | Size
Kit reference
Strap color
Buckle color/finishing
Material

FG3116.70R.1 | 16 mm
 FGM.3116.70R.1.K
 Brown
 IP Gold Plated, brushed
 Vegan grape leather strap,
 beige lining QR



Strap reference | Size
Kit reference
Strap color
Buckle color/finishing
Material

FT3116.40A | 16 mm
 FTM.3116.40A.K
 Blue
 White, matte
 Textile from recycled PET bottles
 with cork lining QR



Strap reference | Size
Kit reference
Strap color
Buckle color/finishing
Material

FT3116.38A | 16 mm
 FTM.3116.38A.K
 Lavender
 White, matte
 Textile from recycled PET bottles
 with cork lining QR

16mm



Strap reference | Size
Kit reference
Strap color
Buckle color/finishing
Material

FT3116.40D | 16 mm
FTM.3116.40D.K
Blue
Blue, matte
Textile from recycled PET bottles with cork lining QR

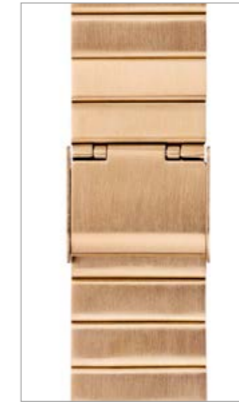


FT3116.60F | 16 mm
FTM.3116.60F.K
Green
Green, matte
Textile from recycled PET bottles with cork lining QR



FT3116.80B | 16 mm
FTM.3116.80B.K
Grey
Black, matte
Felt PET with cork lining QR

18mm



Strap reference | Size
Kit reference
Strap color
Buckle color/finishing
Material

FM22618.IPRG.EM1 | 18 mm
FMM.22618.IPRG.M.K
IP Rose Gold Plated
IP Rose Gold Plated, brushed
Metal bracelet, IP Rose Gold Plated, QR



FG3118.21Q | 18 mm
FGM.3118.21Q.K
Black
Silver, polished
Vegan grape leather strap, red lining QR



FG3118.21Q | 18 mm
FGM.3118.21Q.K
Black
Silver, brushed
Vegan grape leather strap, red lining QR

18mm



Strap reference | Size
Kit reference
Strap color
Buckle color/finishing
Material

FM8918.STEM.2 | 18 mm
FMM.8918.STEM.2.K
Silver
Silver, brushed
Metal bracelet mesh milanaise QR



FM8918.STEM.4 | 18 mm
FMM.8918.STEM.1.K
Silver
Silver, polished
Metal bracelet mesh milanaise QR



FM8918.STEM.3 | 18 mm
FMM.8918.STEM.3.K
Silver
Silver, brushed
Metal bracelet mesh milanaise QR



Strap reference | Size
Kit reference
Strap color
Buckle color/finishing
Material

FG3118.20Q | 18 mm
FGM.3118.20Q.K
Black
Silver, polished
Vegan grape leather strap, beige lining QR



FG3118.20Q.XL | 18 mm
FGM.3118.20Q.XL.K
Black
Silver, polished
Vegan grape leather strap, beige lining QR



FG3118.30Q | 18 mm
FGM.3118.30Q.K
Red
Silver, polished
Vegan grape leather strap, beige lining QR

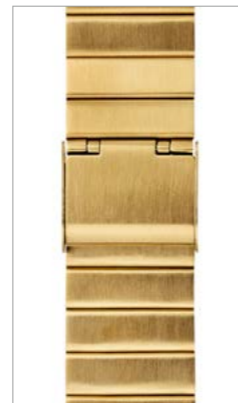


Strap reference | Size
Kit reference
Strap color
Buckle color/finishing
Material

FM8918.IPGEM.1 | 18 mm
FMM.8918.IPGEM.1.K
IP Gold Plated
IP Gold Plated, brushed
Metal bracelet mesh milanaise, IP Gold Plated, QR



FM22618.ST.1M | 18 mm
FMM.22618.ST.1M.K
Silver
Silver, brushed
Metal bracelet QR



FM22618.IPG.M | 18 mm
FMM.22618.IPG.M.K
IP Gold Plated
IP Gold Plated, brushed
Metal bracelet, IP Gold Plated, QR



Strap reference | Size
Kit reference
Strap color
Buckle color/finishing
Material

FT3118.40Q | 18 mm
FTM.3118.40Q.K
Blue
Silver, brushed
Textile from recycled PET bottles with cork lining QR



FT3118.60Q | 18 mm
FTM.3118.60Q.K
Green
Silver, brushed
Textile from recycled PET bottles with cork lining QR



FT3118.80Q.3 | 18 mm
FTM.3118.80Q.3.K
Grey
Silver, brushed
Textile from recycled PET bottles with cork lining QR

18mm



Strap reference | Size
Kit reference
Strap color
Buckle color/finishing
Material

FT3118.40R | 18 mm
 FTM.3118.40R.K
 Blue
 IP Gold Plated, brushed
 Textile from recycled PET bottles with cork lining QR



FT3118.60R | 18 mm
 FTM.3118.60R.K
 Green
 IP Gold Plated, brushed
 Textile from recycled PET bottles with cork lining QR



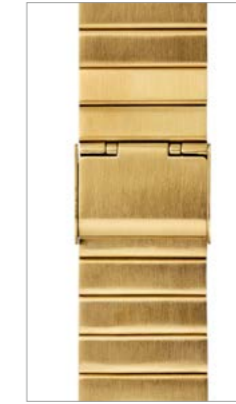
FT3118.80R | 18 mm
 FTM.3118.80R.K
 Grey
 IP Gold Plated, brushed
 Textile from recycled PET bottles with cork lining QR

20mm

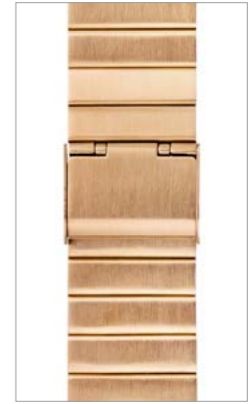


Strap reference | Size
Kit reference
Strap color
Buckle color/finishing
Material

FM22620.ST.1M | 20 mm
 FMM.22620.ST.1M.K
 Silver
 Silver, brushed
 Metal bracelet QR



FM22620.IPG.M | 20 mm
 FMM.22620.IPG.M.K
 IP Gold Plated
 IP Gold Plated, brushed
 Metal bracelet, IP Gold Plated, QR



FM22620.IPRG.EM1 | 20 mm
 FMM.22620.IPRG.M.K
 IP Rose Gold Plated
 IP Rose Gold Plated, brushed
 Metal bracelet, IP Rose Gold Plated, QR

20mm



Strap reference | Size
Kit reference
Strap color
Buckle color/finishing
Material

FM8920.STEM.4 | 20 mm
 FMM.8920.STEM.4.K
 Silver
 Silver, brushed
 Metal bracelet mesh milanaise QR



FM8920.STEM.5 | 20 mm
 FMM.8920.STEM.5.K
 Silver
 Silver, brushed
 Metal bracelet mesh milanaise QR



FM8920.STEM.6 | 20 mm
 FMM.8920.STEM.6.K
 Silver
 Silver, polished
 Metal bracelet mesh milanaise QR



Strap reference | Size
Kit reference
Strap color
Buckle color/finishing
Material

FG25320.20Q.1 | 20 mm
 FGM.25320.20Q.1.K
 Black
 Silver, brushed
 Vegan grape leather strap, black lining QR



FFG3120.21Q.1 | 20 mm
 FGM.3120.21Q.1.K
 Black
 Silver, brushed
 Vegan grape leather strap, red lining QR



FG3120.20Q | 20 mm
 FGM.3120.20Q.K
 Black
 Silver, polished
 Vegan grape leather strap, beige lining QR



Strap reference | Size
Kit reference
Strap color
Buckle color/finishing
Material

FM8920.IPGEM.1 | 20 mm
 FMM.8920.IPGEM.1.K
 IP Gold Plated
 IP Gold Plated, brushed
 Metal bracelet mesh milanaise, IP Gold Plated, QR



FM22720.ST.EM1 | 20 mm
 FMM.22720.ST.EM1.K
 Silver
 Silver, brushed
 Metal bracelet QR



FM23020.ST.EM1 | 20 mm
 FMM.23020.ST.EM1
 Silver
 Silver, brushed
 Metal bracelet QR



Strap reference | Size
Kit reference
Strap color
Buckle color/finishing
Material

FG3120.20Q.L | 20 mm
 FGM.3120.20Q.L.K
 Black
 Silver, polished
 Vegan grape leather strap, beige lining QR



FG3120.20Q.XL | 20 mm
 FGM.3120.20Q.XL.K
 Black
 Silver, polished
 Vegan grape leather strap, beige lining QR

EXTRA LARGE



FG16220.20Q | 20 mm
 FGM.16220.20Q.K
 Black
 Silver, polished
 Vegan grape leather strap, beige lining QR

20mm



Strap reference | Size
Kit reference
Strap color
Buckle color/finishing
Material

FG3120.20Q.1 | 20 mm
 FGM.3120.20Q.1.K
 Black
 Silver, brushed
 Vegan grape leather strap,
 beige lining QR



Strap reference | Size
Kit reference
Strap color
Buckle color/finishing
Material

FG3120.70Q | 20 mm
 FGM.3120.70Q.K
 Brown
 Silver, polished
 Vegan grape leather strap,
 red lining QR



Strap reference | Size
Kit reference
Strap color
Buckle color/finishing
Material

FG3120.70R.1 | 20 mm
 FGM.3120.70R.1.K
 Brown
 IP Gold Plated, brushed
 Vegan grape leather strap,
 beige lining QR

20mm



Strap reference | Size
Kit reference
Strap color
Buckle color/finishing
Material

FT3120.40Q.4 | 20 mm
 FTM.3120.40Q.4.K
 Blue
 Silver, brushed
 Textile from recycled PET bottles
 with cork lining QR



Strap reference | Size
Kit reference
Strap color
Buckle color/finishing
Material

FT3120.40R | 20 mm
 FTM.3120.40R.K
 Blue
 IP Gold Plated, brushed
 Textile from recycled PET bottles
 with cork lining QR



Strap reference | Size
Kit reference
Strap color
Buckle color/finishing
Material

FT3120.40D | 20 mm
 FTM.3120.40D.K
 Blue
 Blue, matte
 Textile from recycled PET bottles
 with cork lining QR



Strap reference | Size
Kit reference
Strap color
Buckle color/finishing
Material

FG16220.30Q | 20 mm
 FGM.16220.30Q.K
 Red
 Silver, polished
 Vegan grape leather strap,
 red lining QR



Strap reference | Size
Kit reference
Strap color
Buckle color/finishing
Material

FT3120.60Q.4 | 20 mm
 FTM.3120.60Q.4.K
 Green
 Silver, brushed
 Textile from recycled PET bottles
 with cork lining QR



Strap reference | Size
Kit reference
Strap color
Buckle color/finishing
Material

FT3120.60R | 20 mm
 FTM.3120.60R.K
 Green
 IP Gold Plated, brushed
 Textile from recycled PET bottles
 with cork lining QR



Strap reference | Size
Kit reference
Strap color
Buckle color/finishing
Material

FT3120.60F | 20 mm
 FTM.3120.60F.K
 Green
 Green, matte
 Textile from recycled PET bottles
 with cork lining QR



Strap reference | Size
Kit reference
Strap color
Buckle color/finishing
Material

FT3120.12A | 20 mm
 FTM.3120.12A.K
 White
 White, matte
 Textile from cotton with cork lining
 QR



Strap reference | Size
Kit reference
Strap color
Buckle color/finishing
Material

FT3120.38A | 20 mm
 FTM.3120.38A.K
 Lavender
 White, matte
 Textile from cotton with cork lining
 QR



Strap reference | Size
Kit reference
Strap color
Buckle color/finishing
Material

FT3120.40A | 20 mm
 FTM.3120.40A.K
 Blue
 White, matte
 Textile from cotton with cork lining
 QR



Strap reference | Size
Kit reference
Strap color
Buckle color/finishing
Material

FT3120.80Q.2 | 20 mm
 FTM.3120.80Q.2.K
 Grey
 Silver, brushed
 Textile from recycled PET bottles
 with cork lining QR



Strap reference | Size
Kit reference
Strap color
Buckle color/finishing
Material

FT3120.80R | 20 mm
 FTM.3120.80R.K
 Grey
 IP Gold Plated, brushed
 Textile from recycled PET bottles
 with cork lining QR



Strap reference | Size
Kit reference
Strap color
Buckle color/finishing
Material

FT3120.80H | 20 mm
 FTM.3120.80H.K
 Grey
 Grey, matte
 Textile from recycled PET bottles
 with cork lining QR

22mm



FM8922.STEM | 22 mm
 FMM.8922.STEM.K
 Silver
 Silver, brushed
 Metal bracelet mesh milanaise



FM8922.STEM.2 | 22 mm
 FMM.8922.STEM.2.K
 Silver
 Silver, brushed
 Metal bracelet mesh milanaise QR



FFG16822.20Q | 22 mm
 FGM.16822.20Q.K
 Black
 Silver, polished
 Vegan grape leather strap,
 beige lining QR



FG16822.20Q.L | 22 mm
 FGM.3120.20Q.L.K
 Black
 Silver, polished
 Vegan grape leather strap,
 beige lining QR



FG16822.20Q.XL | 22 mm
 FGM.3120.20Q.XL.K
 Black
 Silver, polished
 Vegan grape leather strap,
 beige lining QR

Strap reference | Size
Kit reference
Strap color
Buckle color/finishing
Material

chain



FM30315.01 | 41 mm
 FMM.30315.01.K
 Silver
 Silver, polished
 Pocket watch snake chain

Strap reference | Size
Kit reference
Strap color
Buckle color/finishing
Material





Icons



Swiss Made



stop2go



Sapphire crystal



Aluminium case



Chronograph



Mechanical self-winding movement



Luminous hand



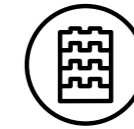
Alarm



Date



Day date



Metal bracelet



Textile strap from recycled PET bottles



Water resistant tested to 3 ATM



Water resistant tested to 5 ATM



WiFi



Backlight



Sustainable material



Vegan grape leather strap



Cork



In a nutshell

- Timeless Swiss design icon since 1944
- DNA pillars:
Swissness, Minimalistic Design, Sustainability, Innovation
- Swiss Made - quality, precision and reliability, long lasting product company
- The Official Swiss Railway Station clock with an independent and protected design
- Committed to continuing to bring innovative design to watch making: stop2go, smart clocks, BackLight
- Dedicated to sourcing materials that strengthen further our sustainability efforts and continue to offer affordable eco-friendly products
- Worldwide distribution and excellent after sales service; international warranty
- Great price and value ratio in Swiss Made segment

CLASSIC COLLECTION

pp. 47-58

Collections overview



A658.30323.11SBBV
Stainless steel polished
30 mm



A658.30323.16SBBV
Stainless steel brushed
30 mm



A658.30323.11SBGV
Stainless steel polished
30 mm



A660.30314.11SBBV
Stainless steel polished
36 mm



A660.30314.16SBBV
Stainless steel brushed
36 mm



A667.30314.11SBBV
Stainless steel polished
36 mm



A660.30360.16SBBV
Stainless steel brushed
40 mm



A660.30360.11SBGV
Stainless steel polished
40 mm



A660.30360.16SBJ
Stainless steel brushed
40 mm



A658.30323.16OMV
Stainless steel brushed
30 mm



A660.30314.16OMV
Stainless steel brushed
36 mm



A660.30360.16OMV
Stainless steel brushed
40 mm



A660.30360.40SBQ
Stainless steel brushed
40 mm



A660.30314.60SBS
Stainless steel brushed
36 mm



A660.30360.60SBS
Stainless steel brushed
40 mm



A660.30314.80SBU
Stainless steel brushed
36 mm



A660.30360.80SBU
Stainless steel brushed
40 mm



A660.30314.40SBD
Stainless steel brushed
36 mm



A660.30360.40SBD
Stainless steel brushed
40 mm



A660.30314.60SBF
Stainless steel brushed
36 mm



A660.30360.60SBF
Stainless steel brushed
40 mm



A660.30314.80SBH
Stainless steel brushed
36 mm



A660.30360.80SBH
Stainless steel brushed
40 mm

CLASSIC COLLECTION

pp. 47-58



A660.30314.40SBM Stainless steel brushed 36 mm
A660.30360.40SBM Stainless steel brushed 40 mm
A660.30314.60SBM Stainless steel brushed 36 mm
A660.30360.60SBM Stainless steel brushed 40 mm
A660.30314.80SBM Stainless steel brushed 36 mm



A660.30314.40SBJ Stainless steel brushed 36 mm
A660.30360.40SBJ Stainless steel brushed 40 mm
A660.30314.60SBJ Stainless steel brushed 36 mm
A660.30360.60SBJ Stainless steel brushed 30 mm
A660.30360.80SBJ Stainless steel brushed 40 mm

evo2 COLLECTION

pp. 61-68



MSE.26110.LBV Stainless steel polished 26 mm
MSE.30110.LBV Stainless steel polished 30 mm
MSE.35110.LBV Stainless steel polished 35 mm
MSE.30210.LBV Stainless steel polished 30 mm
MSE.40210.LBV Stainless steel polished 40 mm



MSE.40112.LGV Stainless steel brushed 40 mm
MSE.26110.LCV Stainless steel polished 26 mm
MSE.35110.LCV Stainless steel polished 35 mm
MSE.30210.LCV Stainless steel polished 30 mm



MSE.26110.SM Stainless steel brushed 26 mm
MSE.35110.SM Stainless steel brushed 35 mm
MSE.30210.SM Stainless steel brushed 30 mm
MSE.40210.SM Stainless steel brushed 40 mm
MSE.43120.LB Stainless steel polished 43 mm
MSE.43110.SJ Stainless steel brushed 43 mm



MSE.35610.LBV Stainless steel polished 35 mm
MSE.40610.LBV Stainless steel polished 40 mm
MSE.35610.SM Stainless steel brushed 35 mm
MSE.40610.SM Stainless steel brushed 40 mm

essence COLLECTION

pp. 73-76



MS1.32110.RB Castor oil compound 32 mm
MS1.41110.RB Castor oil compound 41 mm
MS1.32120.RB Castor oil compound 32 mm
MS1.41120.RB Castor oil compound 41 mm



MS1.32140.LD Castor oil compound 32 mm
MS1.41140.LD Castor oil compound 41 mm
MS1.32160.LF Castor oil compound 32 mm
MS1.41160.LF Castor oil compound 41 mm

SIMPLY ELEGANT COLLECTION

pp. 79-81



A400.30351.16SBZ Stainless steel brushed 36 mm
A638.30350.16SBZ Stainless steel brushed 40 mm

THE ORIGINAL COLLECTION

pp. 83-85



MST.4161B.LBV Stainless steel polished 41 mm
MST.4161B.SJ Stainless steel brushed 41 mm

stop2go COLLECTION

pp. 87-90



MST.3401B.LBV.SET Stainless steel brushed 34 mm
MST.4101B.LBV.2SE Stainless steel brushed 41 mm
MST.34020.LBV.SET Stainless steel brushed 34 mm
MST.41020.LBV.2SE Stainless steel brushed 41 mm
MST.4101B.SJ.2SE Stainless steel brushed 41 mm

CUSHION COLLECTION

pp. 95-98



MSL.31110.LBV Stainless steel polished 31 mm
MSL.31110.LCV Stainless steel polished 31 mm
MSL.31110.SM Stainless steel polished 31 mm
MSL.41410.LBV.SET Stainless steel polished 41 mm
MSL.41440.LD.SET Stainless steel polished 41 mm
MSL.41460.LF.SET Stainless steel polished 41 mm

NEO COLLECTION

pp. 101-103



MSD.41410.LBV
Stainless steel brushed
41 mm



MSD.41411.LBV
Stainless steel brushed
41 mm



MSD.41420.LBV
Stainless steel brushed
41 mm

CLOCKS COLLECTION

pp. 107-114



A990.CLOCK.16SBB
Aluminium brushed
250 mm



A995.CLOCK.16SBB
Aluminium brushed
400 mm



A990.CLOCK.11SBC
Aluminium red
250 mm



A990.CLOCK.64SBB
Aluminium black
250 mm



MSM.25S11
Aluminium brushed
250 mm



A995.CLOCK.17SBV
Aluminium brushed
400 mm



A995.CLOCK.17SBG
Aluminium brushed
400 mm



A995.CLOCK.17SBK
Aluminium brushed
400 mm



A997.MCAL.16SBB.1
Aluminium brushed
125 mm



A997.MCAL.46SBV.1
Aluminium brushed
125 mm



A997.MCAL.66SBV.1
Aluminium brushed
125 mm



A997.MCAL.86SBV.1
Aluminium brushed
125 mm

CLOCKS COLLECTION

pp. 107-114



A660.30318.81SBB
Aluminium brushed
50 mm



A660.30318.82SBK
Aluminium brushed
50 mm



MSM.64410
Metal
50 mm



A660.30316.11SBB
Stainless steel polished
43 mm





Since 2020, Mondaine Group is one of the first watch companies worldwide to be CO₂ neutral for all 3 GHG scopes 1,2,3.

REUSE, REDUCE, RECYCLE.

Registered models. All rights reserved and defended by the manufacturer and the Swiss Government authorities. All wrist watches are Swiss made by Mondaine Watch Ltd, Etzelstrasse 27, 8808 Pfäffikon, Switzerland
T +41 (0)58 666 88 00 | info@mondaine.ch

MONDAINE reserves the right to make minor changes to the models. E&OE.

MONDAINE®

Swiss  Watch

Ed. 04/2024 Ref. no JBR.D088

