

## MMR PERFORMANCE MINI F56 EXHAUST SYSTEM

Product part number: MMR15-1401

Please take the time to read these instructions thoroughly before proceeding. When performing the installation, read the entire numbered instruction before working on the car. If you feel that you do not have the requisite skill, please arrange for a qualified mechanic to perform the installation.

### Ease of Fitment:

(the greater the star rating the easier the installation.)



### Required Tools:

- T25 Torx Bit
- T40 Torx Bit
- Trim Removal Tool
- 8mm Socket
- 10mm Socket
- Stanley Blade

### Included in the box:

- x1 Exhaust Valve + Wiring
- x2 Valve Controllers
- x1 Valve Receiver
- x1 Mini Cat Back System



### STEP 1

Firstly using a 8mm and 10mm socket and suitable driver. Remove the black plastic cover next to the exhaust and the heat shield next to it (as shown in picture).



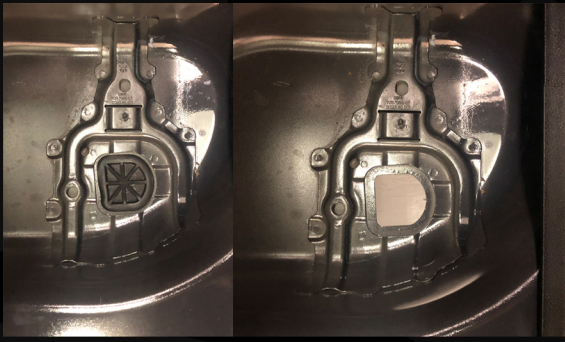
### STEP 2

Once the heat shield is removed you should now be able to see a black bung at the bottom of the car, gently push this up in towards the car to release it.



### STEP 3

Open the boot and remove the parcel shelf and drop the rear seats down by pulling up on the tabs on the top of the seats.



#### STEP 4

Next you will need to remove the rear boot floor and the tool kit that will be located underneath. You should now be able to see the black bung that has been pushed up into the car earlier.



#### STEP 5

Next to create space for the valve wiring you will need to remove the following clips that are holding the carpet in place (see picture)



#### STEP 6

As well as removing these clips you will need to remove the plastic cover that holds the seats in place (see picture) for this you will need a T40 Torx bit and a T25 Torx Bit. Now the carpet should be able to be pulled forward.



#### STEP 7

Remove the rear light cover exposing a hole (see attached picture) Finally you can now gently pull down on the cigarette lighter to remove it from the holder and expose the wires that we will be using for a power supply.

Remove the power connector to the cigarette lighter and insert bridge connector that is supplied with the kit and re-insert the cigarette lighter.



#### STEP 8

After this has been connected you can now run the wires down through the carpet (see picture) and down into the bottom of the boot floor.

**Please note you will need to slice a line into the bung to run the wire underneath the car to the valve.**



### STEP 9

Now going back underneath the car run the valve wiring along the underside of the car (see picture) and re bolt up the heat shield.

Before you re bolt the black plastic box on you will need to slice one corner of the plastic bung and run the wire through it and re seal the boot floor.



### STEP 10

Now the wires are in place you can now locate the responder box inside the rear light cover (see picture) this will need to be attached to the carpet using the tape provided.

Now you can re-assemble by following these steps in reverse order.