



MMR E92 M3 GEAR SHIFT PADDLE KIT

Product part number: MMR04-0201

Please take the time to read these instructions thoroughly before proceeding. When performing the installation, read the entire numbered instruction before working on the car. If you feel that you do not have the required skill, please arrange for a qualified mechanic to perform the installation.

Ease of Fitment:

(the greater the star rating the easier the installation)



Required Tools:

120 Torx Bit
2mm Allen Key
Trim Removal Tool
- Flat Blade Screw Driver

Included in the box:

x1 L11 Gear Change Paddle
x1 R11 Gear Change Paddle
x2 Button Head Retaining Screws



STEP 1

Firstly, using the recommended instructions from BMW remove the airbag from the steering wheel. (these paddles can be fitted with the steering wheel on the car).

Once the airbag has been removed, you can now remove the plastic paddle covers. To do this, using the plastic trim removal tool pry the cover off towards the back of the wheel until the 'click' out of place.

Repeat this for both sides.



STEP 2

Once the plastic paddle covers have been removed you can now remove the button head screw that holds the paddle assembly onto the steering wheel. Using a T20 Torx bit and a suitable driver remove the bolt.

Once the bolt has been removed you can now unplug the sensor for the paddle. (the yellow cable that runs to the paddle). To remove the connector simply pull the connector until it releases. Once these two steps have been completed you should now be able to completely remove the paddle assembly from the steering wheel.

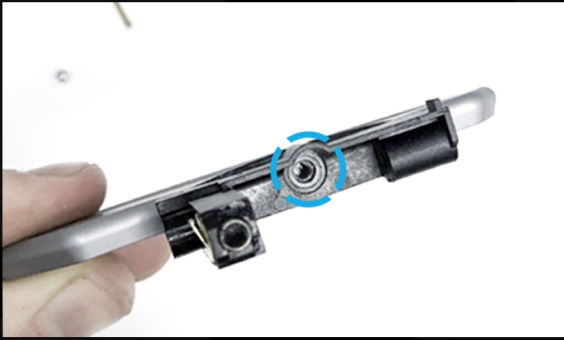


STEP 3

Once the paddle assembly has been removed you now need to remove the paddle from the mechanism. To do this, firstly remove the plastic cover at the top of the paddle assembly then, using a flat blade screwdriver push the metal pin out of the paddle assembly in the direction of the arrow shown.

Once the pin has been removed you now should be able to separate the paddle from the mechanism by pulling the paddle in the direction shown (there is a small bearing inside be careful not to lose this when the paddle is removed, this will need to be used when rebuilding the paddles).





STEP 4

Once the paddle has been removed from the mechanism, remove the bolt holding the trim on the paddle, to remove use a 2mm Allen Key you should now be able to remove the plastic insert. Once the plastic insert has been removed from the OEM paddle it can now be placed into the new MMR paddle. Once the insert is in the paddle use the supplied 2mm button head bolt to secure it to the paddle.



STEP 5

Once the paddle is secured to the plastic insert using the bolt provided it can now be inserted back into the paddle assembly. Make sure the small bearing has been placed on the end of the paddle before placing it back into the paddle assembly.

Lorem Ipsum



STEP 6

Once the new MMR paddle is now attached to the paddle assembly you can now rebuild the top by clipping the plastic cover on top of the paddle assembly. The paddle can now be placed back onto the back of the steering wheel ready to be secured into place.



STEP 7

Now the paddle is on the back of the steering wheel, using the OEM T20 Torx Bolt, secure the paddle to the steering wheel and re-connect the yellow cable that was previously removed.

Once the paddle is secured to the steering wheel. Check the paddle is free to move and can be operated correctly, if so the plastic cover can now be attached to the back of the paddle.



STEP 8

Now one side of the steering wheel has been finished, repeat the same instructions for the opposite side of the steering wheel.

Once both paddles are in place air-bag can be re-inserted using the recommended procedure from BMW.