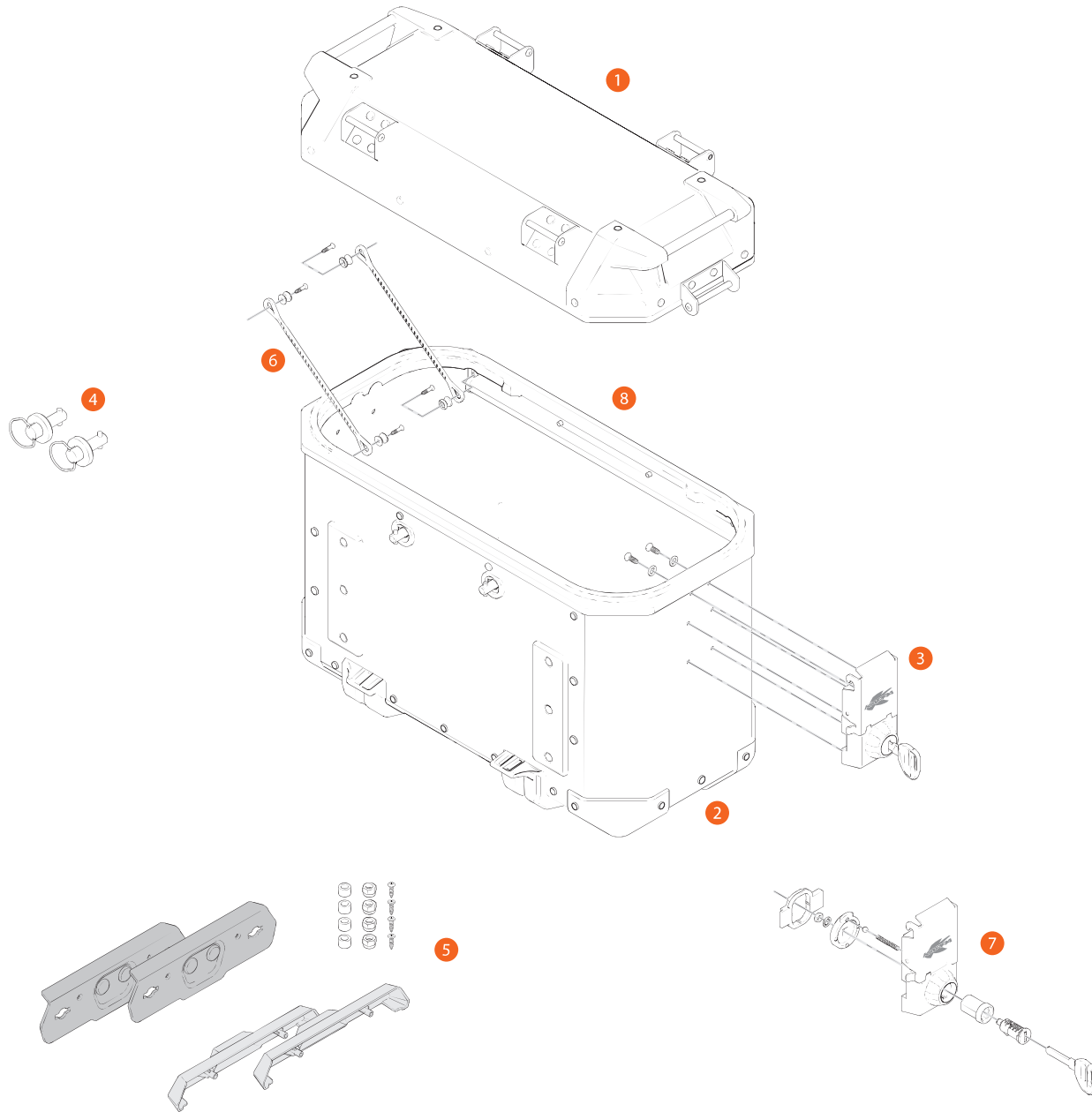


→ KVE37APACK2 - K'VENTURE



1	ZKVE37ALCM	KVE37A assembled top-shell (left)		
1	ZKVE37ARCM	KVE37A assembled top-shell (right)		
1	ZKVE37BLCM	KVE37B top-shell, black painted (left)		
1	ZKVE37BRCM	KVE37B top-shell, black painted (right)		
2	ZKVE37ALFM	KVE37A assembled bottom-shell (left)		
2	ZKVE37ARFM	KVE37A assembled bottom-shell (right)		
2	ZKVE37BLFM	KVE37B bottom-shell, black painted (left)		
2	ZKVE37BRFM	KVE37B bottom-shell, black painted (right)		

3	Z4822DXMKR	K-venture complete hinge (right)		
3	Z4822SXMKR	K-venture complete hinge (left)		
4	ST9034KKITR	Fitting kit for KVE37		
5	KVE37KITR	Fitting kit for PL		
6	Z115RK	Stop bag opening yarn, 2 pcs.		
7	KSL101	Set of 1 key locks with corresponding bush including under lock platelets.		
8	Z4912RK	Rubber seal, 180 cm, for aluminium cases		