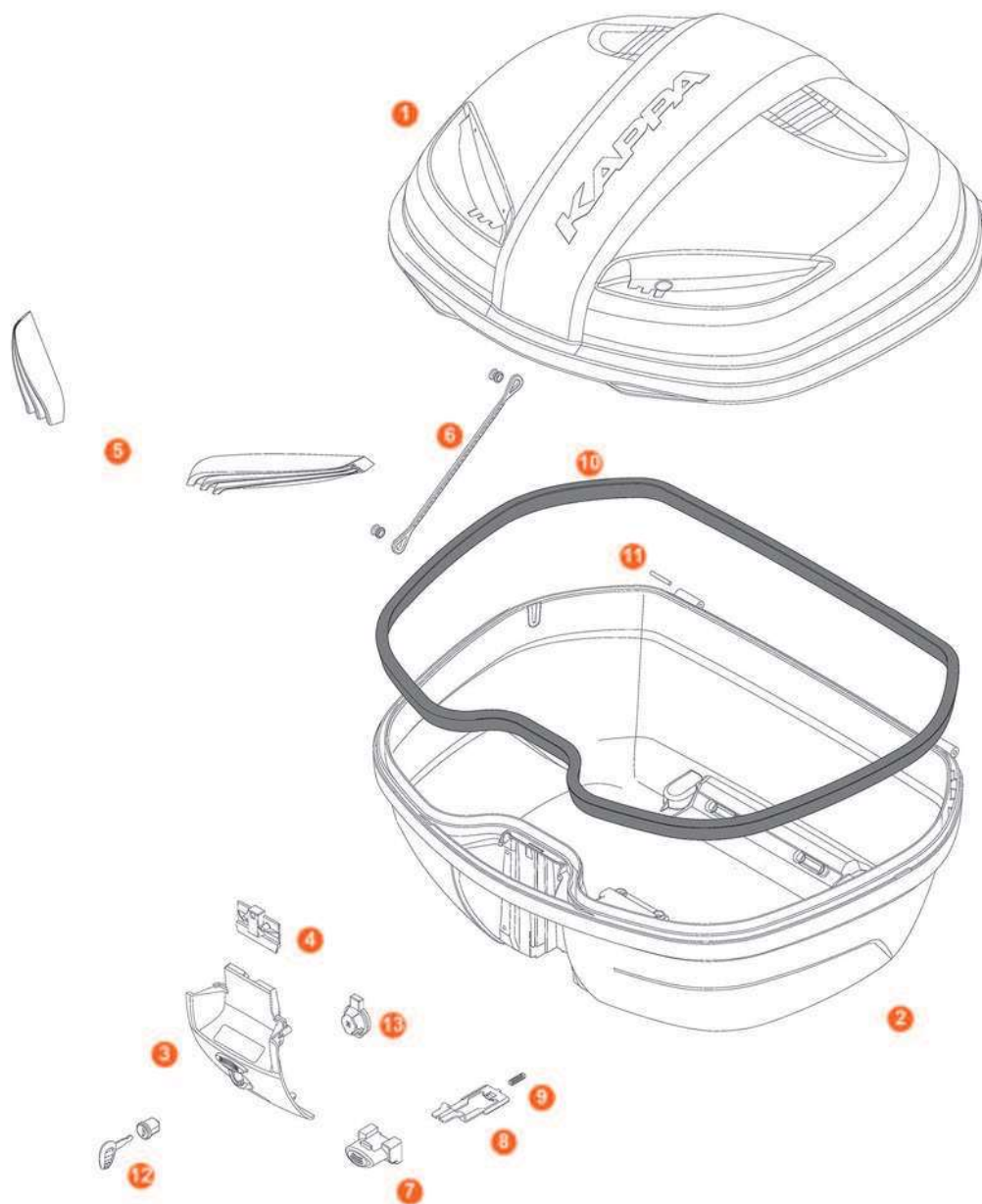


## → K37N / K37NT / K37NN MANTA



1	<b>ZK37CNNM</b>	Mounted top-shell (NN version)		
1	<b>ZK37CNM</b>	Mounted top-shell (N version)		
1	<b>ZK37CNTM</b>	Mounted top-shell (NT version)		
2	<b>ZK37FNM</b>	Mounted bottom-shell (N/NN version)		
2	<b>ZK37FNTM</b>	Mounted bottom-shell (NT version)		
3	<b>ZK3007NM</b>	Hinge, complete		
3	<b>ZK3007NTM</b>	Hinge, complete (NT version)		
4	<b>Z3012RK</b>	Lock key system for top-shell		
5	<b>Z470R</b>	Top-case reflector, red		
5	<b>Z470FR</b>	Smoked top-case reflector		
6	<b>Z599K</b>	Stop bag opening yarn 188mm		

7	<b>Z1983RK</b>	Push button, red for K37N / K37NN		
7	<b>Z645CRK</b>	Push button crhomed for K37NT		
8	<b>Z761NRK</b>	Bolt, 1 pcs.		
9	<b>Z191RK</b>	Push button spring, 1 pcs.		
10	<b>Z790RK</b>	Rubber seal		
11	<b>Z590RK</b>	Pin. Medium, 2 pcs.		
12	<b>Z156K</b>	Key lock complete of bushing and black cap for K37N/K37NN		
12	<b>K500N</b>	Lock key black for K37NT, 1 kit		
13	<b>Z3006RK</b>	Below lock, red for K37N/K37NN		