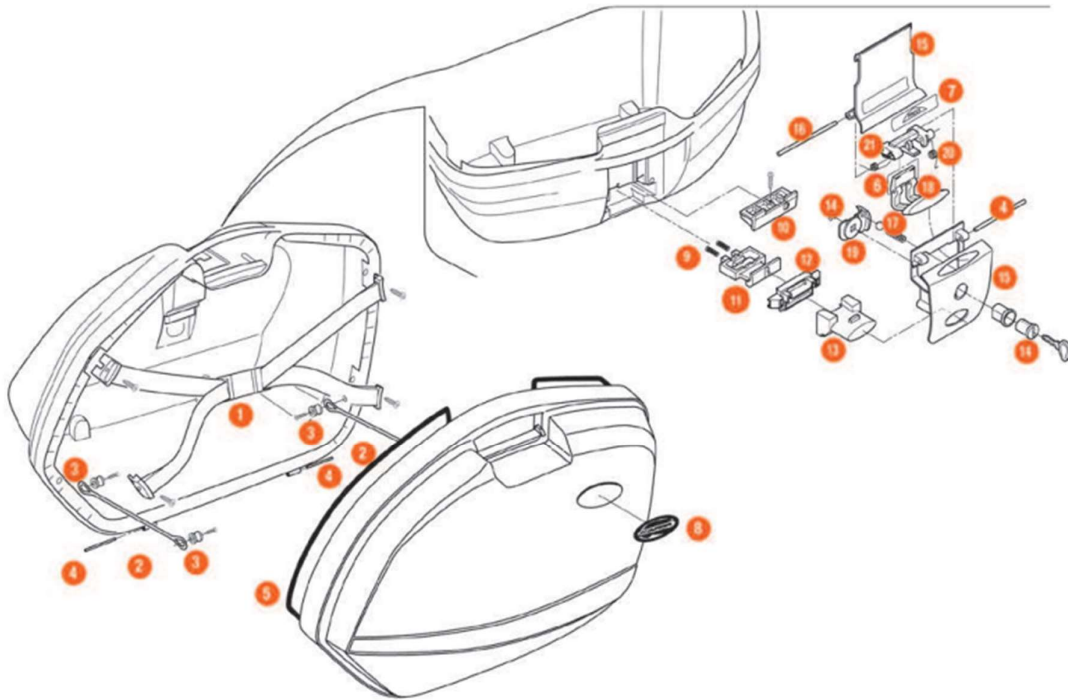


# K33N



|    |                |  |  |  |
|----|----------------|--|--|--|
| 1  | <b>Z1547R</b>  | Inner elastic belt, 1 pcs.               |  |  |
| 2  | <b>Z115RK</b>  | Stop bag opening yarn, 2 pcs.            |  |  |
| 4  | <b>Z637RK</b>  | Pin. D. 04x75 mm, [1 piece]              |  |  |
| 5  | <b>Z769K</b>   | Rubber seal                              |  |  |
| 8  | <b>Z1632R</b>  | Oval KAPPA Logo, in aluminium, 1 pcs.    |  |  |
| 9  | <b>Z109K</b>   | Long bolt springs                        |  |  |
| 11 | <b>Z106K</b>   | Bolt                                     |  |  |
| 13 | <b>Z645RK</b>  | Push button red, 1 pcs.                  |  |  |
| 14 | <b>K500</b>    | Key lock complete of bushing and red cap |  |  |
| 15 | <b>Z641NRK</b> | Hinge black                              |  |  |
| 16 | <b>Z721RK</b>  | Pin. D. 04x85 mm                         |  |  |

|    |                 |  |  |  |
|----|-----------------|--|--|--|
| 17 | <b>Z1384RK</b>  | Cylinder spring and steek spheres, 1 kit |  |  |
| 18 | <b>Z644RK</b>   | Opening push button, 1 pcs.              |  |  |
| 19 | <b>Z640RK</b>   | Plate below lock, 1 pcs.                 |  |  |
| 20 | <b>Z647RK</b>   | Torsion spring, 1 pcs.                   |  |  |
| 21 | <b>Z643RK</b>   | Lock set element red, 1 pcs.             |  |  |
|    | <b>ZK33FNDX</b> | Right bottom-shell [mounted]             |  |  |
|    | <b>ZK33FNSX</b> | Left bottom-shell [mounted]              |  |  |
|    | <b>ZK33CNDX</b> | Right top-shell [mounted]                |  |  |
|    | <b>ZK33CNSX</b> | Left top-shell [mounted]                 |  |  |
|    | <b>Z641NMK</b>  | Hinge complete                           |  |  |
|    | <b>K33NDX</b>   | Right side                               |  |  |
|    | <b>K33NSX</b>   | Left side                                |  |  |