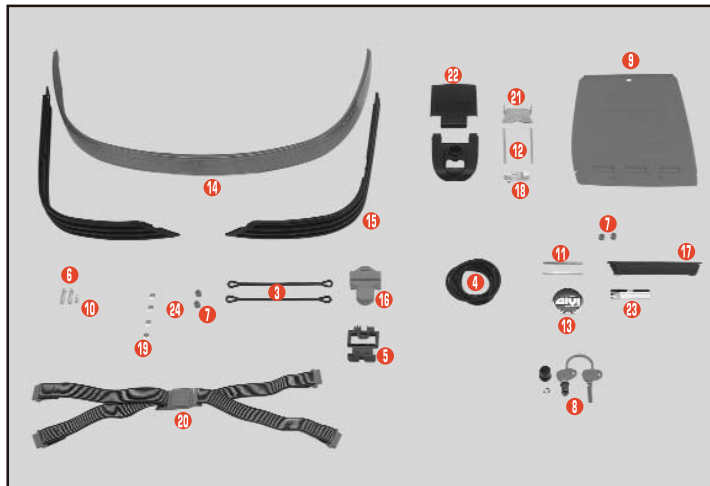


- 1 **Z460CN** E460 top-shell black
- 2 **Z360FN** E460 bottom-shell black
- 3 **Z115R** Stop bag opening yarn Nylon
- 4 **Z159R** Bag lock lining
- 5 **Z828** Stop lamp holder
- 6 **Z106** Bolt
- 7 **Z109** Long bolt springs
- 8 **Z112R** Red pulley
- 9 **Z140R** Lock key
- 10 **Z160** Inner document holder
- 11 **Z1237** Push button spring with washer
- 12 **Z194** \* Pin medium size 66 mm
- 13 **Z195** Hinge pin 78 mm
- 14 **Z200** GIVI logo Monokey
- 15 **Z214** Top-case reflector

- 16 **Z215N** Rear band black
- 17 **Z217** Top-case push button
- 18 **Z220N** ▲ Handle cover black
- 19 **Z236** Hinge spring
- 20 **Z277** Plate below lock
- 21 **Z280** Rear band plate
- 22 **Z285** Spare elastic belt
- 23 **Z312** Hinge plate
- 24 **Z314N** Hinge black
- 25 **Z829** Light holder (black)
- 26 **Z827** Top-case reflector
- 27 **Z362** Light seat chromed
- 28 **Z405** Name holder
- Z358** Circuit with lamps for version with stop light already mounted
- Z155** Pass belt

\* \*ITEM OUT OF STOCK

E 3 6 0



- 1 **Z360CN** E360 top-shell black
- 2 **Z360FN** E360 bottom-shell black
- 3 **Z115R** Stop bag opening yarn nylon
- 4 **Z159R** Bag lock lining
- 5 **Z106** Bolt
- 6 **Z109** Long bolt springs
- 7 **Z112R** Red pulley
- 8 **Z140R** Lock key
- 9 **Z160** Inner document holder
- 10 **Z1237** Push button spring with washer
- 11 **Z194** \* Pin medium size 66 mm
- 12 **Z195** Hinge pin 78 mm
- 13 **Z200** GIVI logo Monokey
- 14 **Z214** Top-case reflector
- 15 **Z215N** Rear band black
- 16 **Z217** Top-case push button

- 17 **Z220N** ▲ Handle cover black
- 18 **Z277** Plate below lock
- 19 **Z280** Rear band plate
- 20 **Z285** Spare elastic belt
- 21 **Z312** Hinge plate
- 22 **Z314N** Hinge black
- 23 **Z405** Name holder
- Z155** Pass belt

\* \*ITEM OUT OF STOCK