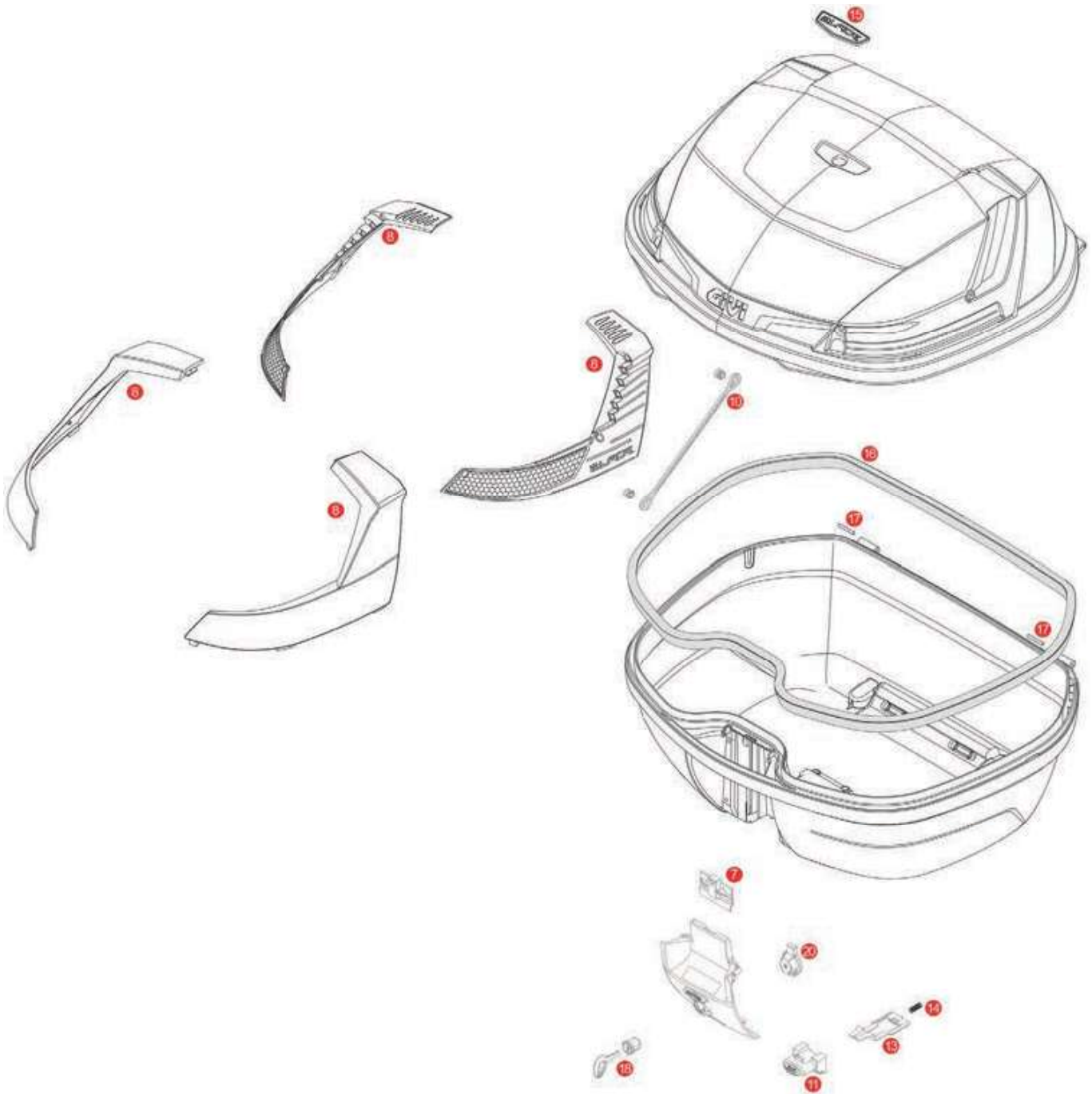


B47 BLADE / B47 BLADE TECH



| | | | | |
|----|-----------------|--|--|--|
| | ZB47CNM | B47 Blade assembled top-shell black | | |
| | ZB47CNTM | B47 Blade Tech assembled top-shell black | | |
| | ZB47FNM | B47 Blade assembled bottom-shell black | | |
| | ZB47FNTM | B47 Blade Tech assembled bottom-shell black | | |
| | Z3007NM | Mounted lock set | | |
| | Z3007NTM | Mounted lock set NT | | |
| 7 | Z3012R | Closure system mounted on the lid | | |
| 8 | Z4506R | Red reflectors with stop lamp holder (for B47 Blade) | | |
| 8 | Z4506FR | Smoked reflectors with stop lamp holder (for B47 Blade Tech) | | |
| 10 | Z599 | Nylon stop bag opening yarn | | |

| | | | | |
|----|----------------|--|--|--|
| 11 | Z1983R | Push button red | | |
| 11 | Z645CR | Opening push button chromed | | |
| 13 | Z761NR | Bolt, 1 pcs. | | |
| 14 | Z191R | Push button spring, 1 pcs. | | |
| 15 | Z4504AR | Chromed Blade logo | | |
| 16 | Z790R | Trim | | |
| 17 | Z590R | Pin, Medium, 2 pcs. | | |
| 18 | Z140R | Key locks with corresponding bush with red handle | | |
| | Z661A | Key locks with corresponding bush with silver handle | | |
| 20 | Z3006R | Plate below lock, for standard key | | |
| | Z4512R | Plate below lock for Security Lock key | | |