



# Certificate of Analysis

Sample: M000716029-001

Harvest/Lot ID: 205.T1

Seed to Sale #N/A

Batch Date :N/A

Batch#: 205.T1

Sample Size Received: 5 gram

Retail Product Size: 5 gram

Ordered : 07/16/20

Sampled : 07/16/20

Completed: 07/20/20 Expires: 07/20/21

Sampling Method: SOP Client Method

**PASSED**

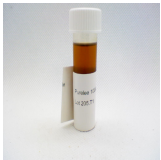
Page 1 of 1

Jul 20, 2020 | Partnered Process LLC

402 Travis Ln STE 64,  
Waukesha, Wisconsin, 53189




PRODUCT IMAGE SAFETY RESULTS




  
Pesticides  
NOT TESTED

  
Heavy Metals  
NOT TESTED


  
Microbials  
NOT TESTED

  
Mycotoxins  
NOT TESTED

  
Residuals  
Solvents  
NOT TESTED

  
Filtration  
NOT TESTED

  
Water Activity  
NOT TESTED

  
Moisture  
NOT TESTED

  
Terpenes  
NOT TESTED

MISC.

CANNABINOID RESULTS



Total THC  
**0.120%**



Total CBD  
**3.353%**



Total Cannabinoids  
**3.720%**

D9-THC	THCA	CBD	CBDA	D8-THC	THCV	CBN	CBDV	CBC	CBG	CBGA
0.120%	ND	3.353%	ND	ND	ND	ND	ND	0.189%	0.058%	ND
1.200 mg/g	ND	33.530 mg/g	ND	ND	ND	ND	ND	1.890 mg/g	0.580 mg/g	ND
LOD 0.0001 %	0.001 %	0.0001 %	0.001 %	0.001 %	0.001 %	0.001 %	0.001 %	0.001 %	0.001 %	0.001 %

Cannabinoid Profile Test

Analyzed by 19	Weight 3.0233g	Extraction date : 07/17/20 03:07:13	Extracted By : 19
Analysis Method - SOP.T.40.020, SOP.T.30.050		Reviewed On - 07/20/20 17:10:33	
Analytical Batch - M0000805POT		Instrument Used : HPLC Potency Analyzer Batch Date : 07/17/20 15:52:36	

Reagent	Dilution	Consums. ID
	40	

Full spectrum cannabinoid analysis utilizing High Performance Liquid Chromatography with UV detection (HPLC-UV). (Method: SOP.T.30.050 for sample prep and Shimadzu High Sensitivity Method SOP.T.40.020 for analysis. LOQ for all cannabinoids is 1 mg/L). Measurement of Uncertainty: 2.7%

This report shall not be reproduced, unless in its entirety, without written approval from Kaycha Labs. This report is an Kaycha Labs certification. The results relate only to the material or product analyzed. Test results are confidential unless explicitly waived otherwise. Void after 1 year from test end date. Cannabinoid content of batch material may vary depending on sampling error. IC=In-control QC parameter, NC=Non-controlled QC parameter, ND=Not Detected, NA=Not Analyzed, ppm=Parts Per Million, ppb=Parts Per Billion. Limit of Detection (LoD) and Limit Of Quantitation (LoQ) are terms used to describe the smallest concentration that can be reliably measured by an analytical procedure. RPD=Reproducibility of two measurements. Action Levels are State determined thresholds for human safety for consumption and/or inhalation. The result >99% are variable based on uncertainty of measurement (UM) for the analyte. The UM error is available from the lab upon request. The "Decision Rule" for the pass/fail does not include the UM. The limits are based on F.S. Rule 64-4.310.

David Greene  
Lab Director

State License # 19-05-02P  
ISO Accreditation #  
17025:2017 #97164



Signature

07/20/2020

Signed On