



PRODUCT CATALOGUE

2022-2023



OUR PURPOSE

Poolrite exists to provide pool owners with hassle-free, eco-friendly products and solutions creating a healthier and more enjoyable pool for you, your family, and our environment

Established in 1978, Poolrite Manufacturing Pty Ltd is one of Australia's largest and most experienced manufacturers of pool and spa equipment. With a name Australians can trust, Poolrite leads the way in design and technology. Poolrite celebrates 44 years in the industry and with exciting new management shifts & developments in the company, the future only looks brighter. Our job is to make sure you enjoy season after season in your pool – easier, smarter, more efficient, and safe than ever.

FIND MORE POSSIBILITIES AT [POOLRITE.COM](https://www.poolrite.com)





Contents

MINERALS	8
FILTRATION MEDIA	9
FILTERS	10-11
MEDIA FILTERS	10
S SERIES	10
CARTRIDGE FILTERS	11
C SERIES	11
PUMPS	12-16
ENERGY EFFICIENT PUMPS	12-13
GEMINI EP TWIN SPEED SERIES	13
GEMINI SQ TWIN SPEED SERIES	13
SINGLE SPEED PUMPS	14-16
ENDURO EP SERIES	14
JUNIOR SQ SERIES	15
QUIETLINE SQI SERIES	16
SANITISING SYSTEMS	17
CHLORINATORS	17
XTREME SERIES	17
SKIMMER BOXES	18-19
INNOSKIM	18-19
PLUMBING & FITTINGS	20-21
EYEBALL FITTINGS	20
MAIN DRAIN	21
HYDROSTATIC VALVE	21
SPARE PARTS	22-34



Innovative Since 1978

Ever since our start in 1978, our passion for innovation, development, and precision has led to a long line of successful products and solutions across the pool industry with market-leading reliability for customers around the globe. Today, our commitment to increasing research and development with our regard for innovation is guiding us to create the future gold standard within the pool industry, all whilst paying homage to the vast Poolrite heritage.



Our Heritage



1978: AUSTRALIA'S LARGEST AND OLDEST

Established in 1978, Poolrite's first plant was located in Western Sydney led by founder Peter Wolpert. Poolrite Manufacturing Pty Ltd is one of Australia's largest and most experienced manufacturers of pool and spa equipment. With a name Australians can trust, Poolrite leads the way in design and technology.



1982: POOL INDUSTRY INNOVATION

Poolrite's expertise in the pool market is utilized in new product areas. Over the years, Poolrite has successfully introduced many new innovative products, including the PM Super Quiet (SQI) pump (1982), the first salt chlorination systems for Australia and overseas (1986), and the Smart Valve (2000).



2007: SUSTAINABLE SOLUTIONS

In Australia each year 3 billion litres of water are lost and over one hundred thousand tonnes of sodium chloride is released into the ecosystem. At Poolrite we have forever been focused on developing solutions to reverse this damage. Our aim is to help the world conserve and replenish its most precious resources. And it can all start with your backyard pool by using innovative sustainable solutions. So every time you use your Poolrite product, you are becoming part of the solution



2013: PROUDLY AUSTRALIAN OWNED AND MADE

The Poolrite competitive advantage comes from having our own ISO9001 accredited Australian manufacturing facility where we manage all product creation, design and development. Our mission is to bring manufacturing back to Australia, with the assignment to place Australian Made pool equipment back on its pedestal and position Poolrite as a recognise world-class leading brand.



2022: THE FUTURE OF POOLRITE


Poolrite has been proudly Australian Made for over 40 years, has globally recognized innovations and is arguably the most reliable pool pumps and filters on the market. These are proud achievements that have fortified Poolrite's brand recognition into the hearts and minds across so many generations. That's something we look to uphold and write into the history books of the future.


FIND MORE POSSIBILITIES AT POOLRITE.COM

We'll keep you up to date Online

Follow us on social media

On our Instagram & Facebook pages are great ways you can get in touch with us at Poolrite, and meet Poolrite users from all over the world. Tell us what you think of our products and services, share your own stories and see exclusive pics and videos directly from the Poolrite Team

 facebook.com/poolrite/

 instagram.com/poolrite/

User information Online

Ever wondered how to get the most out of your Poolrite equipment? Then it's time to visit our website! There you'll find our guided video tutorials, blog posts, routine maintenance information, and guideline to keep your pool and your Poolrite equipment thriving for years to come.

Subscribe to our YouTube channel

Watching our high-quality videos is one of the best ways to find out the features and benefits of our products, as well as get useful tips and tricks on usage, maintenance, and servicing procedures for your Poolrite equipment. Stay up to date by subscribing to our YouTube channel!

 www.youtube.com/poolrite





Interact with our QR codes

Our mobile QR codes provide convenient and instant access to updated product information and useful support for your equipment, including, a library of instructional videos, user manuals, routine maintenance directions, and contact details.

New customer portal

The new customer portal includes an improved overview of our product range and pricing, spare parts and documents, and your exclusive contact directory. To sign up, contact customer service to create an account with us.

Visit our website

Here you'll find updated information on our company and products including brochures, catalogues, complete product technical data, service literature, user manuals, interactive online tools, news, and much much more. You'll also be able to find your nearest local supplier and inquire about products.

 www.poolrite.com



Revive Minerals

Revive Minerals replace the use of traditional sodium chloride salts in your pool. Revive Minerals contain several essential elements. These ingredients provide a superior alternative to sodium chloride salt, both in chloride content, environmental impact, and the well-being of the bather.

Poolrite pioneered the research of transdermal magnesium absorption in the swimming pool industry, revolutionising the swimming experience. Revive represents the next generation of advanced mineral and trace element science.

For the first time ever, our team have scientifically proven that topically applied magnesium and other minerals can permeate through the skin, providing significant long-term health benefits.

The Revive formulation provides biologically significant concentrations of vital minerals to help restore the body's natural equilibrium whilst relaxing in your pool.

Poolrite's Revive Balanced Mineral System is the world's first scientifically backed mineral product for your pool that has clinically proven benefits for not just your skin and hair, but your entire body.

Swimming in a Revive pool relieves stress and anxiety, moisturises your skin, improves water clarity, and helps with your overall well-being.

Revive was developed to offer a better quality and more affordable solution to allow every pool owner to experience the proven benefits of a Revive multi-mineral swimming pool.



- ✓ Moisturises skin
- ✓ Relaxes muscles
- ✓ Reduces fatigue
- ✓ Restores electrolyte balance
- ✓ Improves systemic mineral absorption
- ✓ Improves skin's barrier function
- ✓ Improves sleep quality and reduces stress
- ✓ Improves bone strength and wound healing
- ✓ Improves metabolism
- ✓ Improves thyroid function
- ✓ Improves cardiovascular function
- ✓ Helps to alleviate symptoms of mineral deficiency and aids prevention of major ailments
- ✓ Improves immune function

Model	Product Description	Product Code
Revive multi-mineral formula	10kg Bag	11120003

Diamond Kleen

Diamond Kleen is the only glass filtration media that has been treated with our industrial autoclaving sterilisation process. All other non-sterilised glass tested contained harmful levels of ecoli, faecal chloroforms and other dangerous bacteria.

Diamond Kleen is an integral part of any quality filtration system, it provides superior water flow reducing pressure with outstanding results.

Ideally it works in conjunction with the mineral pool flocculation process, amalgamating finer parts together which are caught in the filter, but is also effective with salt systems.

When compared to a sand, zeolite, D.E. filter or cartridge filter, Diamond Kleen filtration typically can save between 2,000 and 10,000 litres of water per year. The larger spaces between the particles which allows for a more efficient water flow.

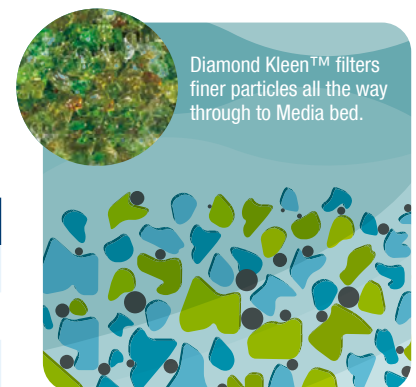
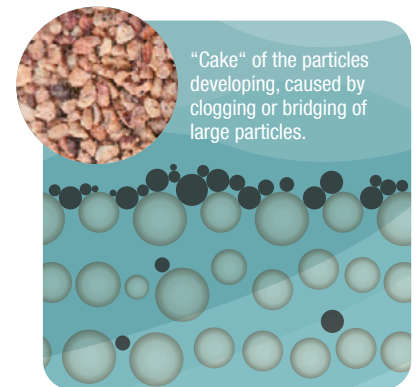
This efficiency also results in a reduction of electrical power required, therefore lowering the amount of carbon emissions.

The better the flow rate through your pool's filter, the more water you circulate each minute or hour. Simply by increasing your water flow rate with Diamond Kleen, cumulative energy savings can be realised with more effective filtration.

- ✔ Environmentally friendly; reduces your carbon footprint.
- ✔ Made from 100% recycled material.
- ✔ Longer lifetime (by up to 3 times).
- ✔ Exceptional cleaning ability; significantly reducing chemical usage.
- ✔ Less likely to block or channel; better filtration.
- ✔ Saves energy through easier pump loads and extended pump life.

Filter	Diamond Kleen M10 - Fine Grade		Diamond Kleen M20 - Coarse Grade
S-5000	45kg (3 bags)	(+)	30kg (2 bags)
S-6000	90kg (6 bags)	(+)	45kg (3 bags)
S-8000	120kg (8 bags)	(+)	45kg (3 bags)

Model	Product Description	Product Code
M10	Fine Grade - 15kg Bag	11110000
M20	Coarse Grade - 15kg Bag	11110001





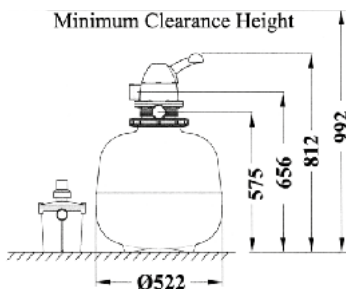
S Series Media Filter

The S series Media Filters are constructed from commercial strength polymer, field-tested for over 35 years bear testament to the quality and reliability of Poolrite's S Series filters.

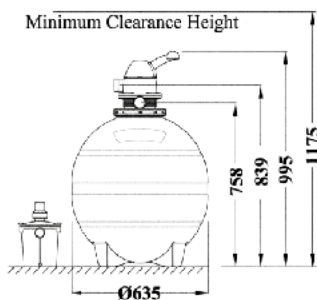
- ✓ True one piece seamless rotationally moulded tank designed for maximum strength
- ✓ Made from medium density polyethylene for strength & durability
- ✓ Clever designed dispersion inlet overdrain for smooth even flow of water into the filter tank
- ✓ Later underdrain design ensures maximum flow for fast and efficient backwashing which increases time between backwash cycles
- ✓ Equipped with Poolrite's award winning Multiport Valve

Dimensions

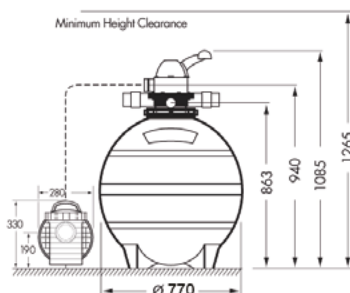
S-5000



S-6000



S-8000



Specifications

Model	S-5000	S-6000	S-8000
Filter Tank Diameter	522mm (20 in)	635mm (25 in)	770mm (30 in)
Max Flow Rate (L/hr)	15,000	18,000	27,000
Diamond Kleen media M10 fine (kg)	45	90	120
Diamond Kleen media M20 coarse (kg)	30	45	45
Recommended Pump Model	0.5 - 1.0hp	1.25 - 1.5hp	1.5hp

Model	Product Description	Product Code
S-5000	522mm (20") with V2000 Valve	17010024
S-6000	635mm (25") with V2000 Valve	17010025
S-8000	762mm (30") with V2000 Valve	17010026
V2000	Multiport Valve - Complete	11050001

C Series Cartridge Filter

The C series Cartridge Filters are compact, economical filters designed to effectively filter your pool from any unwanted debris. With an internal element fabricated from pleated reusable polyester fabric designed to maximize cleaning abilities .

- ✔ Robust lock-ring mechanism
- ✔ Fast easy access to the element for maintenance and a safe reliable method of sealing the lid
- ✔ Automatic air bleeding eliminates the need for continual manual bleeding
- ✔ Internal automatic pressure release prevents damage to pump & filter in the event of a blockage
- ✔ Offering four different models over three different sizes, ensuring you get the right size for your application

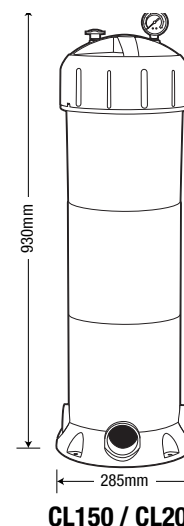
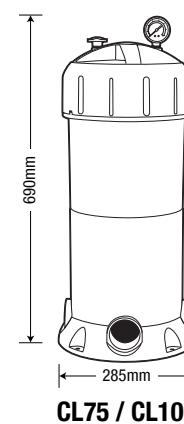
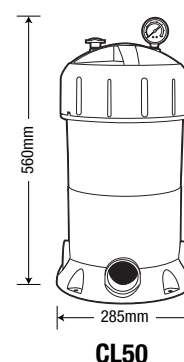
Specifications

Model	CL50	CL100	CL150	CL200
Max Flow Rate (L/min)	325	370	470	470
Minimum Element Removal Height	870mm	1075mm	1564mm	1564mm
Recommended Pump Model	0.75hp	1.0hp	1.25 hp	2.0 hp
Maximum Working Pressure	280 kPa	280 kPa	280 kPa	280 kPa

Model	Product Description	Product Code
CL50	50 Sq ft Cartridge Filter	11070020
CL100	100 Sq ft Cartridge Filter	11070022
CL150	150 Sq ft Cartridge Filter	11070023
CL200	200 Sq ft Cartridge Filter	11070024



Dimensions



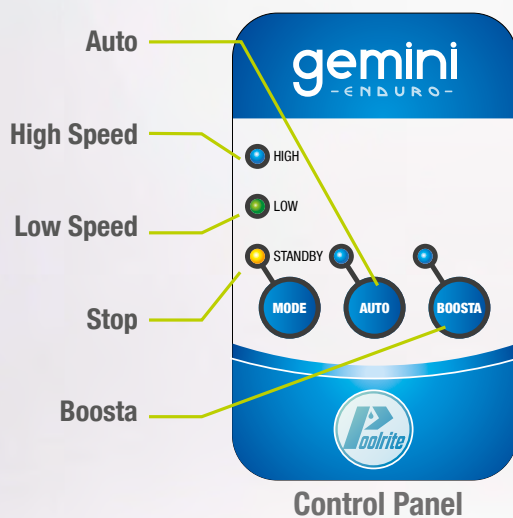
gemini twin™

SUPER EFFICIENT TWIN SPEED PUMP

Ahead Of The Curve In Energy Efficiency

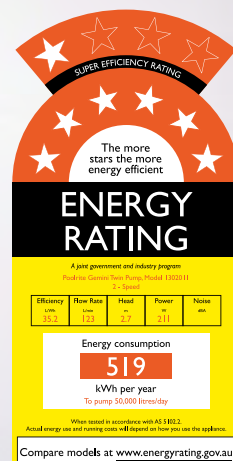
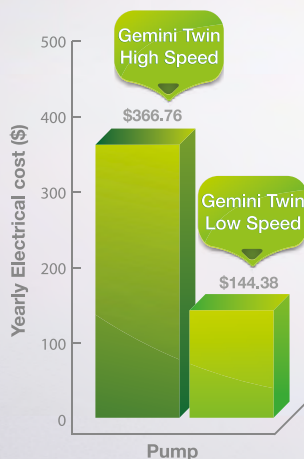
Equipped with Poolrite's Patent Twin speed technology, the Gemini twin pump significantly reduces energy consumption and carbon emissions with its ability to Change speed from HIGH to LOW on each power-up automatically. Unlike most multi-speed pumps the Gemini Twin is powered by a traditional induction motor that has been proven to stand the test of time.

The Gemini Twin can save up to 90% on your energy costs per year effortlessly. Along with all the added benefits of reliable motor technology and unique automatic modes.



AUTO mode: Automatically changes speed between HIGH and LOW on each power-up to enhance effectiveness of pool cleaning and filtering equipment all whilst optimising power consumption effortlessly.

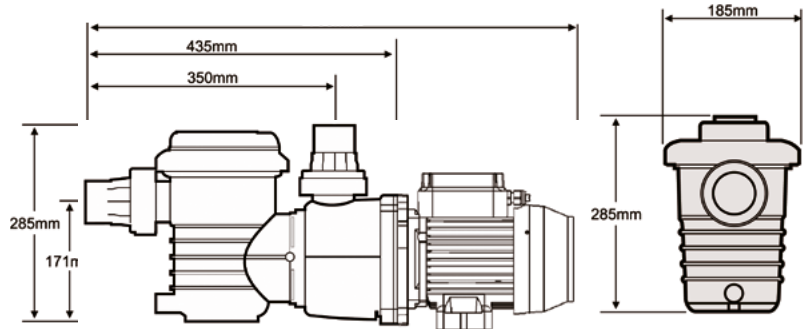
BOOSTA mode: Immediately runs the pump on HIGH speed for 30 minutes (no matter what the pump is doing) for rapid cleaning prior to or after swimming. Providing the user with trouble-free control at their fingertips.



Gemini Enduro Twin Series



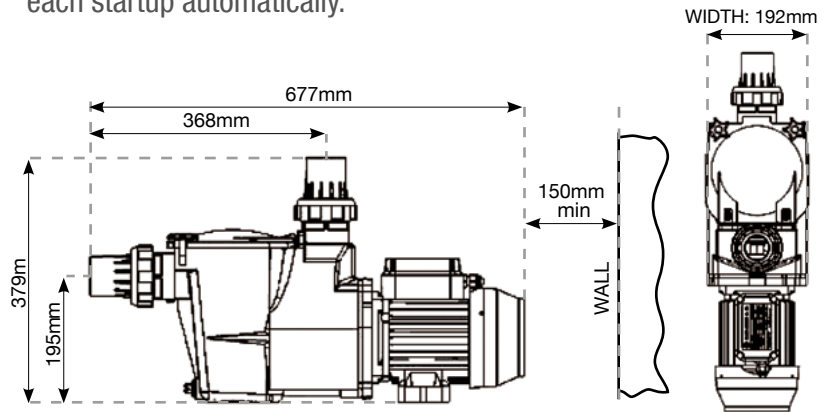
Utilising the efficiency of the Gemini Twin Speed motor combined with the cost-effective manufacturing of the Enduro Pump, the Poolrite Gemini-Enduro pump significantly reduces energy consumption and carbon emissions while keeping initial setup costs considerably lower.



Gemini Twin SQ Series



The SQ Gemini is built to stand the test of time with its proven chassis design, equipped with an energy-saving twin speed motor that offers ultra-low speeds whilst providing unique operating modes that enhance pool cleaning effectiveness that it requires on each startup automatically.



Specifications

Model	SQ Gemini 1.0hp	SQ Gemini 1.5hp	Enduro Gemini 1.0hp	Enduro Gemini 1.5hp
Horsepower	0.15 - 1.0Hp	0.15 - 1.5Hp	0.15 - 1.0Hp	0.15 - 1.5Hp
Volts	240	240	240	240
Min Suction Pipe Size	40/50mm	40/50mm	40/50mm	40/50mm
Weight	16kg	18.5kg	14kg	16.5kg

Model	Product Description	Product Code
Enduro Gemini 1.0hp	Energy-efficient Twin speed	11030020
Enduro Gemini 1.5hp	Energy-efficient Twin speed	11030019
SQ Gemini 1.0hp	Energy-efficient Twin speed	11030011
SQ Gemini 1.5hp	Energy-efficient Twin speed	11030013

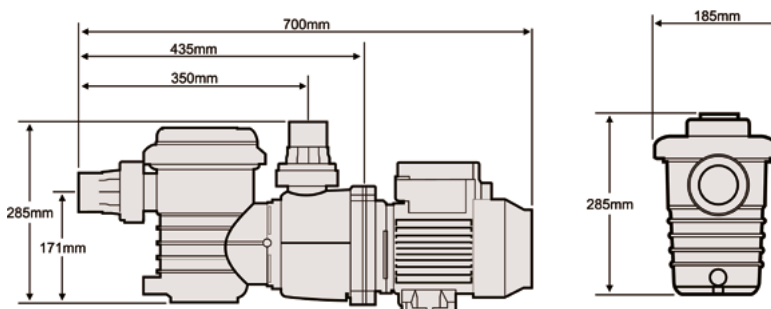
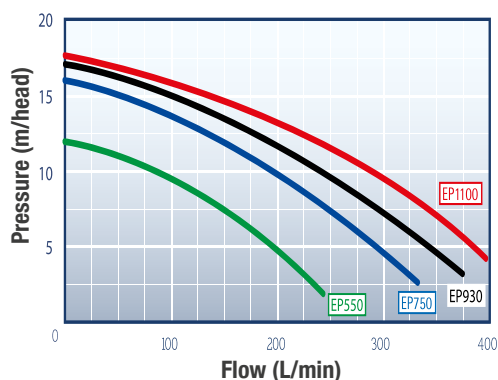


Enduro EP Series Pumps

Poolrite's Enduro pump series are ideal for in-ground and above-ground swimming pools, spas, solar systems, and feature pumps.

- ✓ Low operating noise is achieved with a precisely matched chassis & motor design.
- ✓ High flow and pressure capabilities mean for an efficient filtration and vacuum cleaning abilities.
- ✓ Electrically double-insulated and in-built automatic thermal overload instrument for added safety.
- ✓ Easy installation and service thanks to the self-aligning unions and a discharge port that can be easily positioned at the top or side to accommodate different piping configurations.

Pump performance



Specifications

Model	EP 550	EP 750	EP 930	EP 1100
Input (watts)	1170	1170	1500	1500
Output (watts)	550	750	930	1100
Output (hp)	0.75	1.00	1.25	1.50
Volts	240	240	240	240
Hz.	50	50	50	50

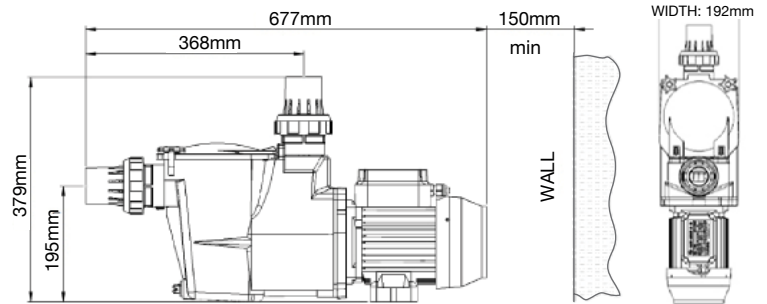
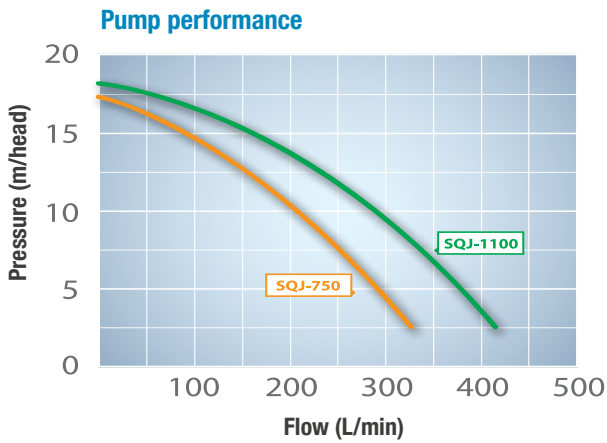
Model	Product Description	Product Code
EP-550	Input 1170w / Output 550w - 0.75hp	11030005
EP-750	Input 1170w / Output 750w - 1.0hp	11030006
EP-930	Input 1500w / Output 930w - 1.25hp	11030007
EP-1100	Input 1500w / Output 1100w - 1.5hp	11030008

Junior SQ Series Pumps

The SQJ Junior series is designed for modern-day pool solutions. Equipped with a super quiet high-performance motor that provides efficient filtration all whilst delivering the proven features of the Quietline SQI chassis.



- ✓ Ideal for use during off-peak times. Achieved through intelligent noise suppression design with thicker housing material and efficient impellor design.
- ✓ Tried Tested and proven reliable performance from Quietline SQI chassis



Specifications

Model	SQJ-750	SQJ-1100
Input (watts)	1170	1500
Output (watts)	750	1100
Output (hp)	1.00	1.50
Volts	240	240
Hz.	50	50

Model	Product Description	Product Code
SQ Junior-750	Input 1170w / Output 750w - 1.0hp	11030009
SQ Junior-1100	Input 1500w / Output 1100w - 1.5hp	11030010

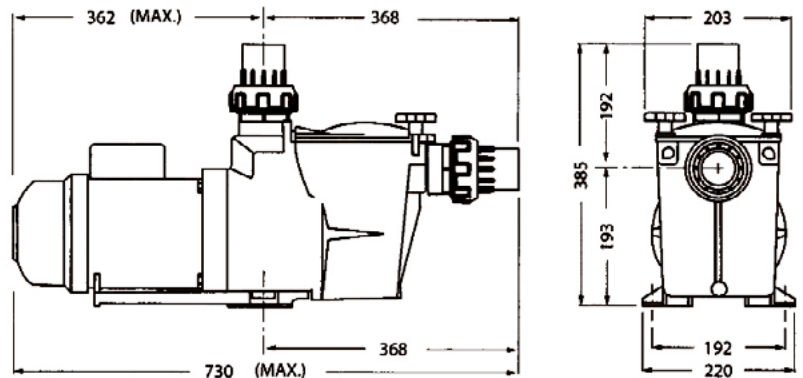
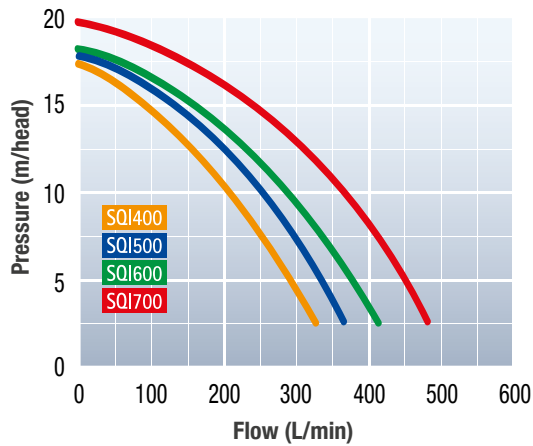


Quietline SQI Series

The Quietline SQI Series pumps are powered by a CMG light industrial motor rated for reliability and durability. The iconic SQI pump design has endured over decades delivering whisper-quiet operation and guaranteed reliability to pool owners for over 20 years and is the premium choice for commercial and residential pool owners.

- ✓ Field tested for over 20 years
- ✓ Twist knobs for easy basket access
- ✓ Glass-reinforced closed face impellor partnered with a low noise designed Internal diffuser

Pump performance



Specifications

Model	SQI-400	SQI-500	SQI-600	SQI-700
Horsepower	1.0	1.25	1.5	2.0
KW Output	0.75	0.93	1.1	1.5
Volts	240	240	240	240
Min Suction Pipe Size	40/50mm	40/50mm	40/50mm	50mm
Weight	16.6kg	19kg	20kg	23.5kg

Model	Product Description	Product Code
SQI-400	Input 1200w / Output 750w - 1.0hp	11030001
SQI-500	Input 1300w / Output 930w - 1.25hp	11030002
SQI-600	Input 1550w / Output 1100w - 1.5hp	11030003
SQI-700	Input 2000w / Output 1500w - 2.0hp	11030004

Xtreme Chlorinator

Xtreme chlorinator works with a standard salt pool and also with Poolrite's Revive Multi-Mineral Formula.

Designed and built to be the most reliable and durable Chlorinator on the market using only quality electrical components and commercial grade cell materials in a compact fully sealed design built for all conditions.

Using industry-proven technology, XTreme's embedded micro controller delivers an intelligent and responsive system not only for our commercial users but also for our domestic customers that are efficient, reliable, and easy to operate.

Suitable for both Mineral & Sodium Salt Pools 3500 - 7000PPM

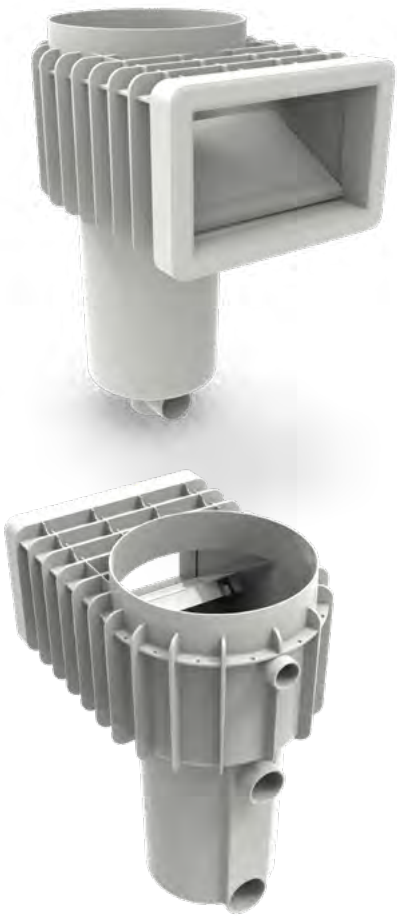


- ✔ Self-cleaning chlorinator cell
- ✔ Super-chlorinate and backwash mode
- ✔ In-built salt and flow protection
- ✔ Extra-large cell surface for prolonged life
- ✔ Synchronous Timer with battery backup

Specifications

Model	Chlorine Production	Max Pool capacity (L)
XT15	15 Grams/Hour	30,000
XT20	20 Grams/Hour	40,000
XT25	25 Grams/Hour	50,000
XT30	30 Grams/Hour	60,000
XT35	35 Grams/Hour	70,000
XT50	50 Grams/Hour	100,000
XT75	75 Grams/Hour	150,000
XT100	100 Grams/Hour	200,000

Model	Product Description	Product Code
XT15	15 Grams/Hour Chlorine Production	110215
XT20	20 Grams/Hour Chlorine Production	110220
XT25	25 Grams/Hour Chlorine Production	110225
XT30	30 Grams/Hour Chlorine Production	110230
XT35	35 Grams/Hour Chlorine Production	110235
XT50	50 Grams/Hour Chlorine Production	110250
XT75	75 Grams/Hour Chlorine Production	110275
XT100	100 Grams/Hour Chlorine Production	110210



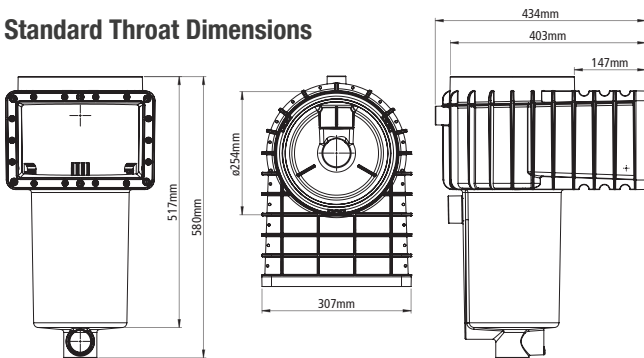
innoSkim Pool Skimmer

Poolrite's InnoSkim is engineered for a range of residential and commercial applications. Rated to robust quality standards our true unibody mold is one of the strongest in the industry. Non-corrosive, non-conductive and virtually indestructible, they're the preferred choice of professional pool builders.

Designed in consultation with industry leaders to deliver the most advanced, feature-packed skimmer on the market. Constructed from engineering grade polymer materials that have been field-tested for over 25 years, fully automated and manufactured in an ISO accredited facility in Brisbane, ensures absolute consistency and the highest quality product possible.

- ✔ Complies with Australian Standards AS1926.3-2010
- ✔ Suitable for Concrete, Vinyl and Fibreglass pools
- ✔ True one piece skimmer body
- ✔ Lockable skimmer basket and Speed controlled vac plate
- ✔ Main drain port & Provisions for water flow and auto levelling port

Standard Throat Dimensions



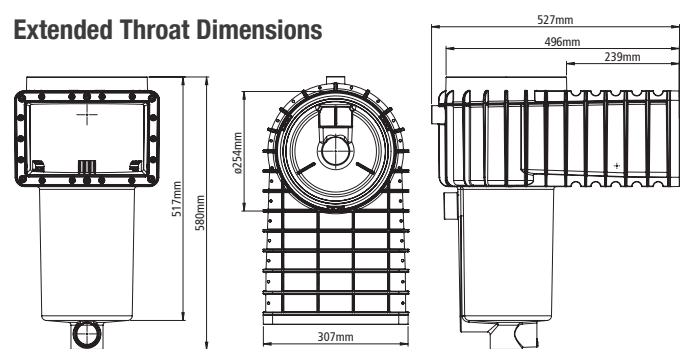
innoSkim Concrete Standard

Model	Colour	Product Code
innoSkim Concrete Standard Throat	White	11090100
innoSkim Concrete Standard Throat	Grey	11090102

innoSkim Fibreglass Standard

Model	Colour	Product Code
innoSkim Fibreglass Kit Standard Throat	White	11090113
innoSkim Fibreglass Kit Standard Throat	Grey	11090115

Extended Throat Dimensions



innoSkim Concrete Extended

Model	Colour	Product Code
innoSkim Concrete Extended Throat	White	11090101
innoSkim Concrete Extended Throat	Grey	11090103

innoSkim Fibreglass Extended

Model	Colour	Product Code
innoSkim Fibreglass Kit Extended Throat	White	11090114
innoSkim Fibreglass Kit Extended Throat	Grey	11090116

Lockable Skimmer Deck Lid

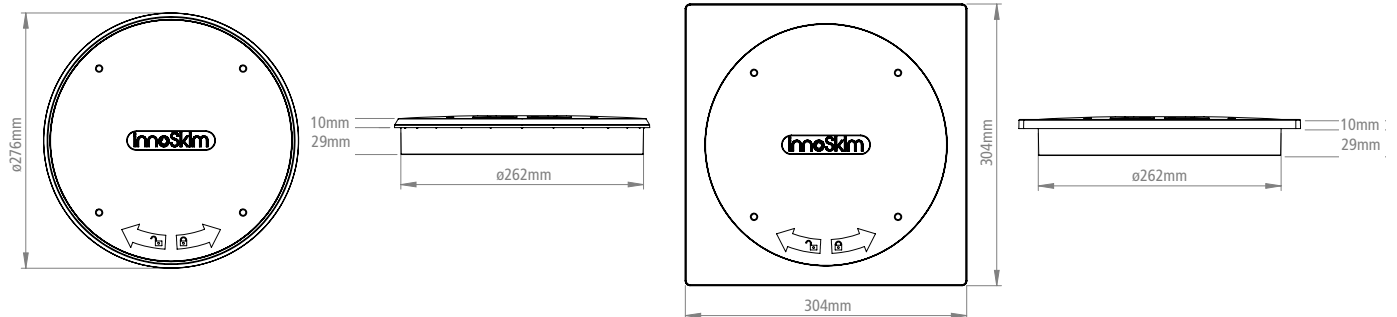
Poolrite's innovative lockable skimmer deck lid carries the highest levels of child-proof safety, with secure access only available via its unique innoSkim key. Robust construction materials and non-slip surface comes as standard and ensures peace of mind in all regions.



- ✔ Childproof lockable lid that is only accessible with supplied key
- ✔ Non-slip surface
- ✔ Complies with Australian Standards AS1926.3-2010
- ✔ Available in Round and Square
- ✔ Available in Grey, White or Beige (Dress ring only)



Skimmer Dress Dimensions



innoSkim Round Lid

Model	Colour	Product Code
innoSkim Lockable Deck Lid Round	White	11090050
innoSkim Lockable Deck Lid Round	Grey	11090049
innoSkim Lockable Deck Lid Round	Beige	11090048

innoSkim Square Lid

Model	Colour	Product Code
innoSkim Lockable Deck Lid Square	White	11090053
innoSkim Lockable Deck Lid Square	Grey	11090052
innoSkim Lockable Deck Lid Square	Beige	11090051



Eyeball Fittings - Concrete

- ✔ Easy push on fitting suitable for 40mm pipe connections
- ✔ Adjustable eyeball to assist directional water flow
- ✔ Flush fitting collar

Model	Colour	Product Code
Poolrite Push/Glue In 40mm Connect	White	11090023
Poolrite Push/Glue In 40mm Connect	Grey	11090019



Eyeball Fittings - Fibreglass

- ✔ Purpose design to suit Fibreglass pools
- ✔ Adjustable eyeball to assist directional water flow
- ✔ Flush fitting collar

Model	Colour	Product Code
Poolrite Fibreglass 40mm Threaded Eyeball	White	11090024
Fibreglass Eyeball Kit	White	11090025



Eyeball Fittings - Vinyl Liner

- ✔ 40mm pipe connections
- ✔ Purpose design to suit Vinyl pools
- ✔ Adjustable eyeball to assist directional water flow
- ✔ Suitable for walls thickness of ~25mm

Model	Colour	Product Code
Poolrite Vinyl Liner Fitting to suit wall thickness 6-25mm	White	11090026
Poolrite Vinyl Liner Fitting to suit wall thickness 0-6mm	White	11090028
Vinyl Eyeball Repair Kit	White	11090027



Main Drain

Poolrite Main Drains are constructed from engineering grade ABS plastic that have been field tested for over 25 years, fully automated and manufactured in an ISO accredited facility in Brisbane. Incorporated into the center of the main drain is the Hydrostatic Valve.

This valve will protect and prevent your pool's housing from the threat of lifting or unwanted shifting. This is caused by a build up of high pressure ground water below your pool.

The Drains lower stem detects underground water at a greater depth and causes the hydrostatic valve to release it before it can build up to a level that may cause significant damage to your pool.

✔ **Material:** High Strength ABS

Model	Colour	Product Code
Main Drain	White	11090017
Hydrostatic Valve Complete - Concrete	White	11090037



Fibreglass Hydrostatic valve

Poolrite Fibreglass Pool Hydrostatic Valves will safeguard and prevent your fibreglass pool from lifting out of the ground or unwanted shifting when the pool is exposed to a build up of high pressure ground water below your pool.

✔ **Material:** High Strength ABS

Model	Colour	Product Code
Hydrostatic Valve Fibreglass	White	11090022
Hydrostatic Valve Fibreglass	Grey	11090021





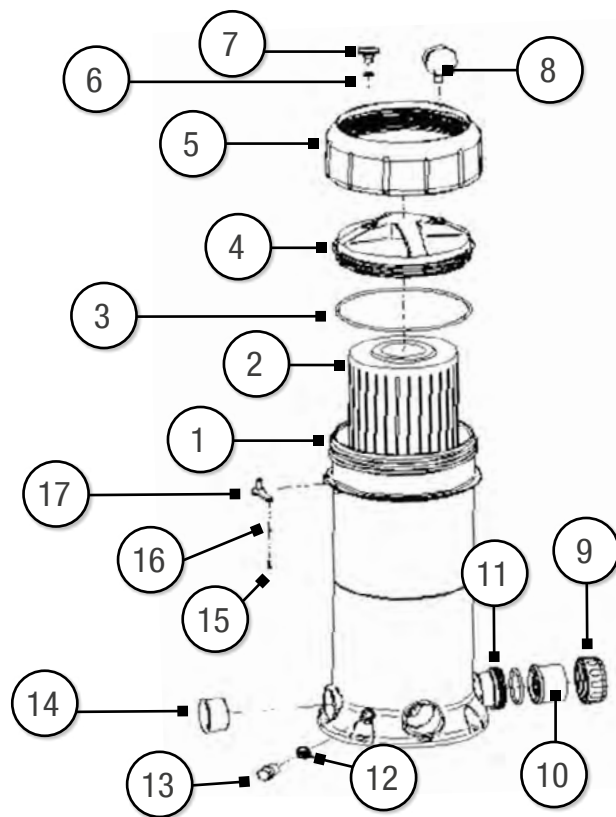
Spare Parts Contents

FILTERS	24-27
C SERIES CARTRIDGE FILTER	24
S SERIES MEDIA FILTER	25
V2000 MULTIPOINT VALVE	26
PUMPS	28-31
ENDURO EP SERIES	28
JUNIOR SQ SERIES	29
QUIETLINE SQI SERIES	30
GEMINI SQ TWIN SPEED SERIES	31
GEMINI EP TWIN SPEED SERIES	31
SKIMMER BOXES	33
INNOSKIM	33
PLUMBING & FITTINGS	34
MAIN DRAIN	34
HYDROSTATIC VALVE	34

C Series Cartridge Filter

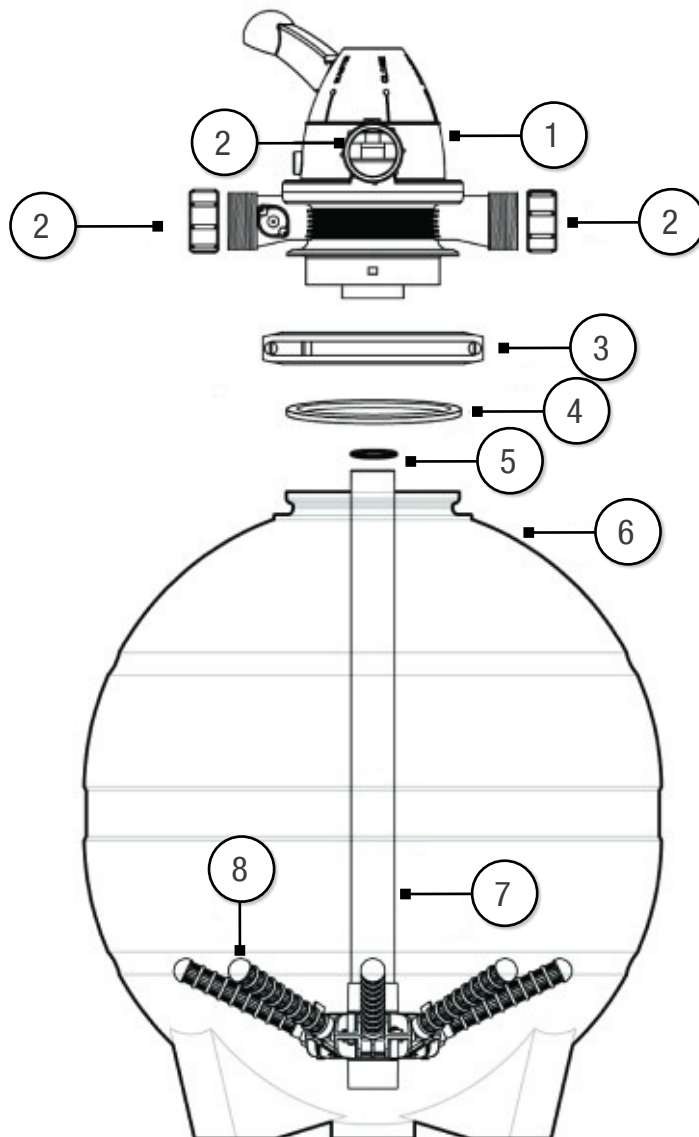
Part No.	Product Description	Diagram No.
11080022	CL Series Filter 50sq Tank Base	1
11080023	CL Series Filter 75/100sq Tank Base	1
11080024	CL Series Filter 150sq Tank Base	1
11080025	CL Series Filter 200sq Tank Base	1
11080030	CL Series Filter 50sq Element	2
11080031	CL Series Filter 75sq Element	2
11080032	CL Series Filter 100sq Element	2
11080033	CL Series Filter 150sq Element	2
11080034	CL Series Filter 200sq Element	2
11080011	CL Series Filter Lid O'Ring	3
11080010	CL Series Filter Lid	4
11080017	CL Series Filter Locking Ring	5

Part No.	Product Description	Diagram No.
11080012	CL Series Filter Air Release Valve With O'Ring	6, 7
11080016	CL Series Filter Union	9, 10, 11
11080019	CL Series Filter Bung O'Ring	12
11080015	CL Series Filter Bung	13
11080014	CL Series Filter Locking Lever	15, 16, 17
11080018	CL Series Filter Blanking Bush	
11080020	CL Series Filter 40mm Straight Tail	
11080021	CL Series Filter 50mm Extended Tail	
11080026	CL Series Filter 50sq Pipe Centre	
11080027	CL Series Filter 75/100sq Centre Pipe	
11080028	CL Series Filter 150sq Centre Pipe	
11080029	CL Series Filter 200sq Centre Pipe	



S Series Media Filter

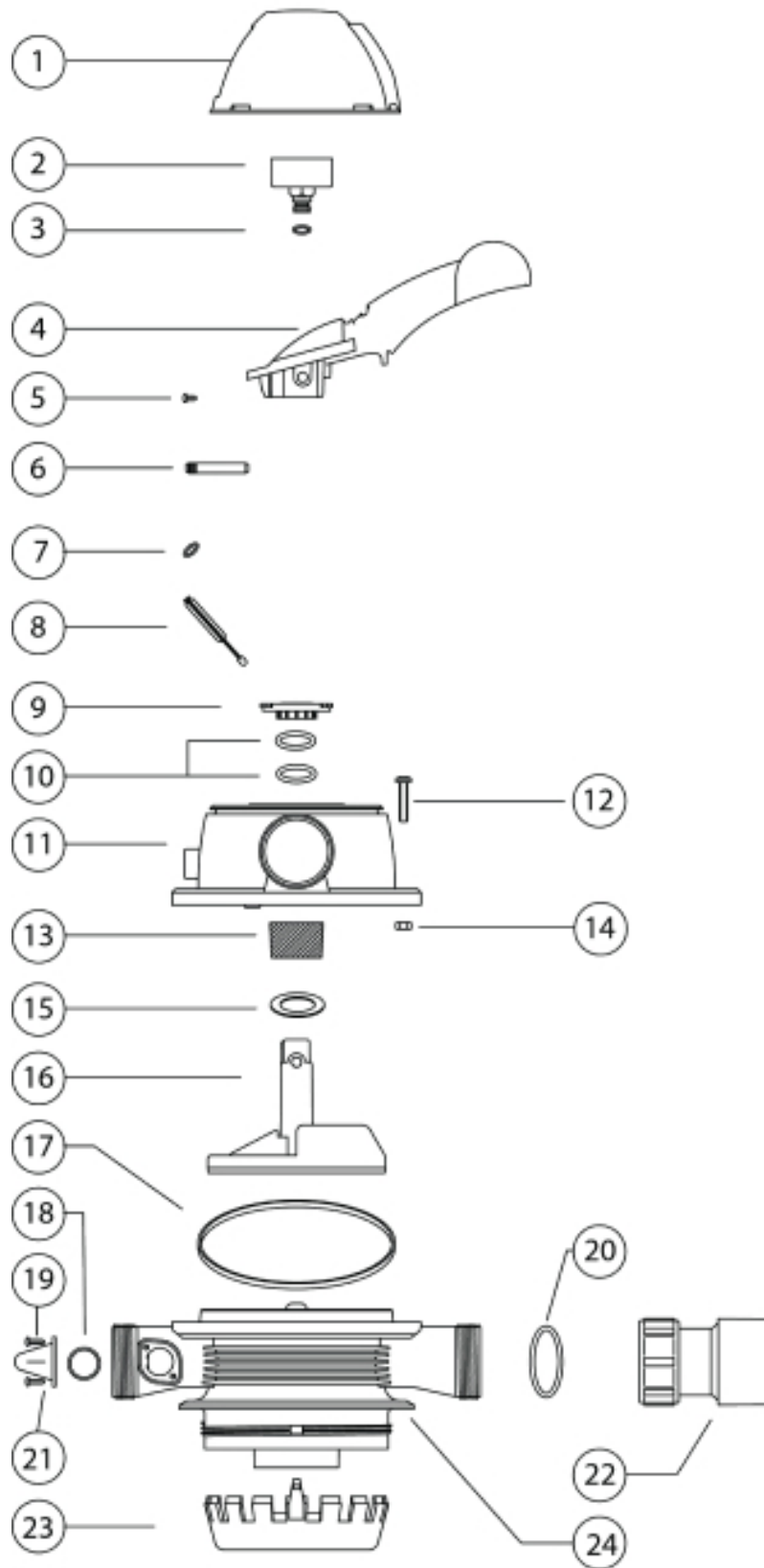
Part No.	Product Description	Diagram No.
11050001	V2000 - Complete	1
11040001	Take off union - 50mm	2
11080005	S-5000/ S-6000 / S-8000 Tank Clamp Kit	3, 4
22020002	S-5000/ S-6000 / S-8000 Valve Tank Gasket	4
11070001	S-5000 Tank with Lateral Assembly	6, 7, 8
11070002	S-6000 Tank with Lateral Assembly	6, 7, 8
11070003	S-8000 Tank with Lateral Assembly	6, 7, 8
11080004	S-5000 Standpipe / Lateral Assembly	7, 8
11080003	S-6000 Standpipe / Lateral Assembly	7, 8
11080002	S-8000 Standpipe / Lateral Assembly	7, 8



V2000 Multiport Valve

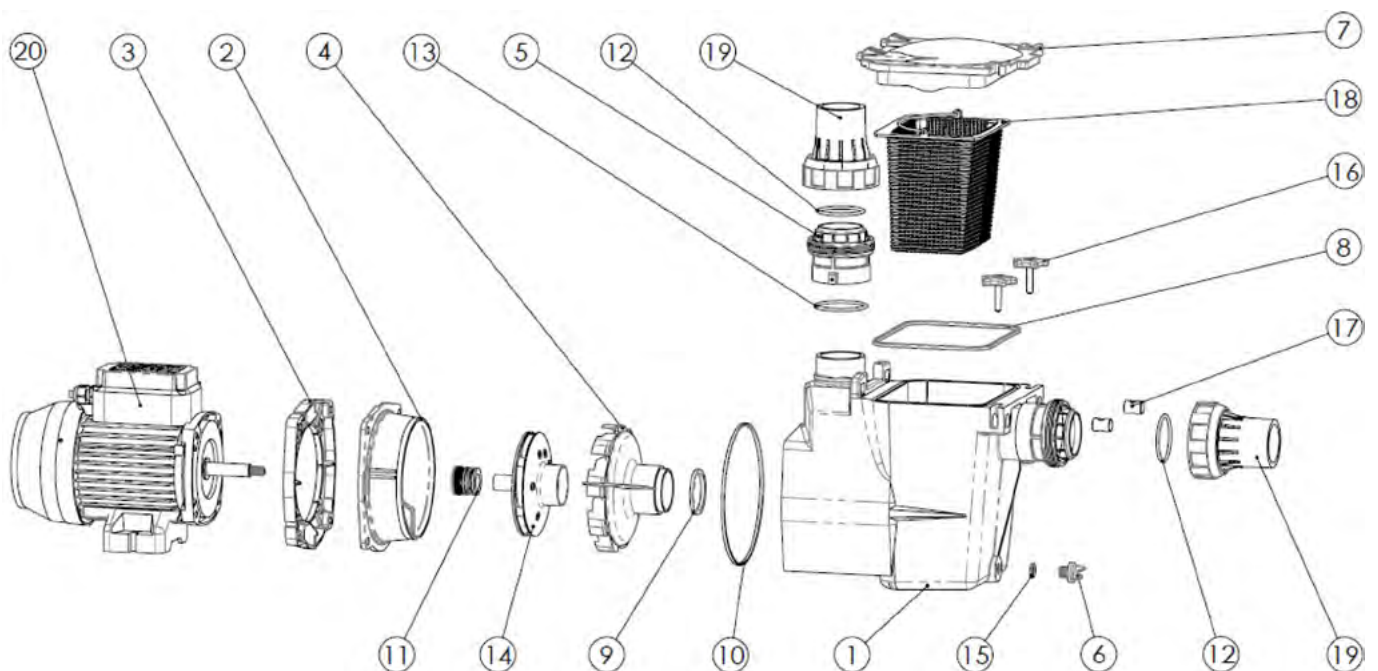
Part No.	Product Description	Diagram No.
23010034	Tinted Valve Cover	1
31111	Pressure Gauge Replacement Kit	
	28010002 - Pressure Gauge	2
	22010004 - Pressure Gauge O-Ring	3
	21030004 - Screw self tapping 6G x 5/16	5
11060001	Valve Top Assembly	
	23010040 - Valve Handle	4
	21070006 - Valve PIN HANDLE BRASS 50MM	6
	22010002 - O-RING FLEXIFLAP	7
	23010074 - Valve Flexiflap	8
	23010041 - Anti Friction Bush	9
	22010011 - O-RING valve shaft	10
	23010022 - Valve Top	11
	21030001 - Screw 1/4 x 1 1/4 Pan X Recess 316ss	12
	25020001 - Valve spring	13
	21010008 - Nut Hex Brass Low 1/4"	14
	21040001 - WASHER FLAT 28MM	15
	23010143 - Selector plate	16
23010000	Valve Flange Gasket	17
31112	Sight Glass Replacement Kit	
	22010001 - Sight Glass O-RING	18
	21020003 - Sight Glass Screws	19
	23010043 - Valve sight glass	21
22010014	O-Ring - Backnut	20
11040001	Take off union - 50mm	22
11060004	Valve Base Assembly	24
23010039	Valve Diffuser - s5000, s6000, s8000	23

Exploded View



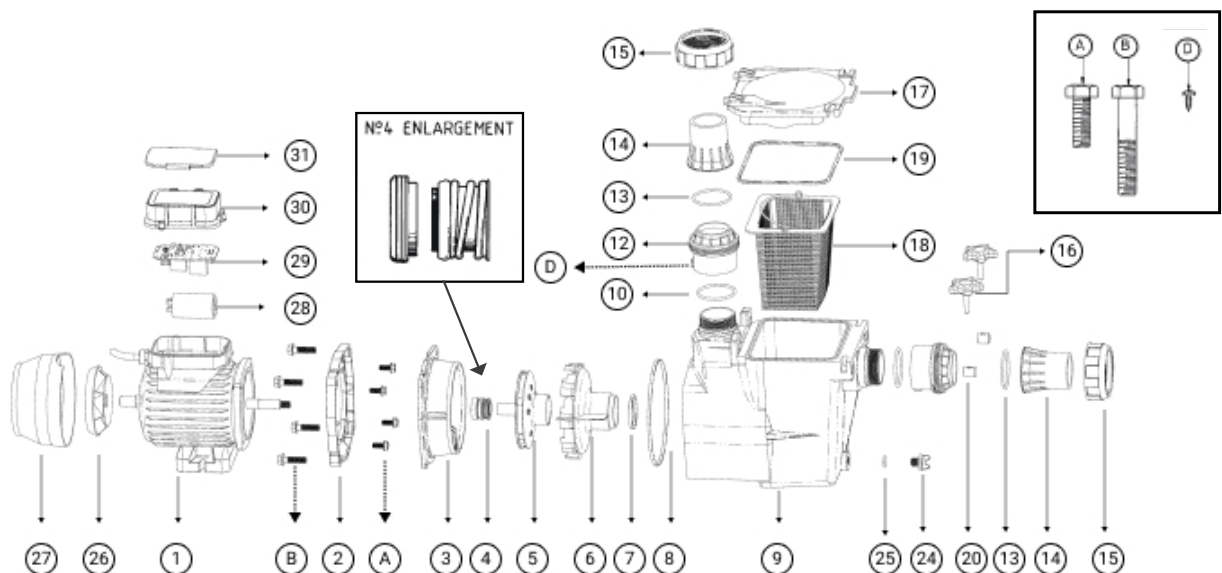
Junior SQJ Pump Series

Part No.	Product Description	Diagram No.
22020005	Mechanical Seal	11
32212	Impellor Replacement Kit - Yellow SQJ-750	
	11040032 - Impellor - SQJ-750 Yellow	14
	23010028 - Diffuser Plate	4
	22020006 - Diffuser Gasket	9
32214	Impellor Replacement Kit - Black SQJ-1100	
	11040033 - Impellor - SQJ-1100 Black	14
	23010028 - Diffuser Plate	4
	22020006 - Diffuser Gasket	9
22020007	Housing Gasket	10
22010021	Discharge O-Ring	13
23010075	Threaded Coupling - Outlet Fitting	5
22010017	Swivel Coupling O-Ring	12
11040003	Swivel Coupling Complete - (2 of each)	12, 19
32216	Lid Fastening Replacement Kit	
	21030045 - Hand Knob (x2)	16
	21010001 - Brass Knuckle (x2)	17
23010026	Pump Lid	7
23010027	Pump Basket	18
22020008	Pump Lid Gasket	8



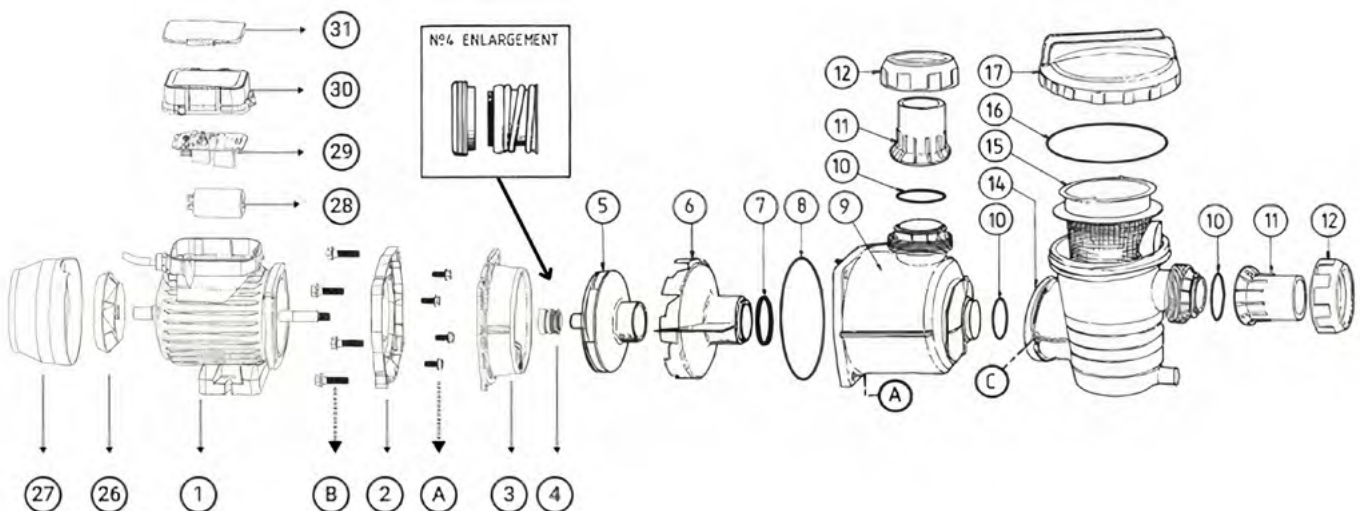
Gemini SQ Twin Speed

Part No.	Product Description	Diagram No.
22020005	Mechanical Seal	4
34412	Impellor Replacement Kit - Red 1.0HP	
	11040045 - Impellor - SQ Red	5
	23010028 - Diffuser Plate	6
	22020006 - Diffuser Gasket	7
32214	Impellor Replacement Kit - Black 1.5HP	
	11040033 - Impellor - SQ Black	5
	23010028 - Diffuser Plate	6
	22020006 - Diffuser Gasket	7
22020007	Housing Gasket	8
22010021	Discharge O-Ring	10
23010075	Threaded Coupling - Outlet Fitting	12
22010017	Swivel Coupling O-Ring	13
11040003	Swivel Coupling Complete - (2 of each)	13, 14, 15
32216	Lid Fastening Replacement Kit	
	21030045 - Hand Knob (x2)	16
	21010001 - Brass Knuckle (x2)	20
23010026	Pump Lid	17
23010027	Pump Basket	18
22020008	Pump Lid Gasket	19
11040046	1.0hp - 14uF - Gemini - PCB Replacement Kit	28, 29
35112	1.5hp - 30uF - Gemini - PCB Replacement Kit	28, 29



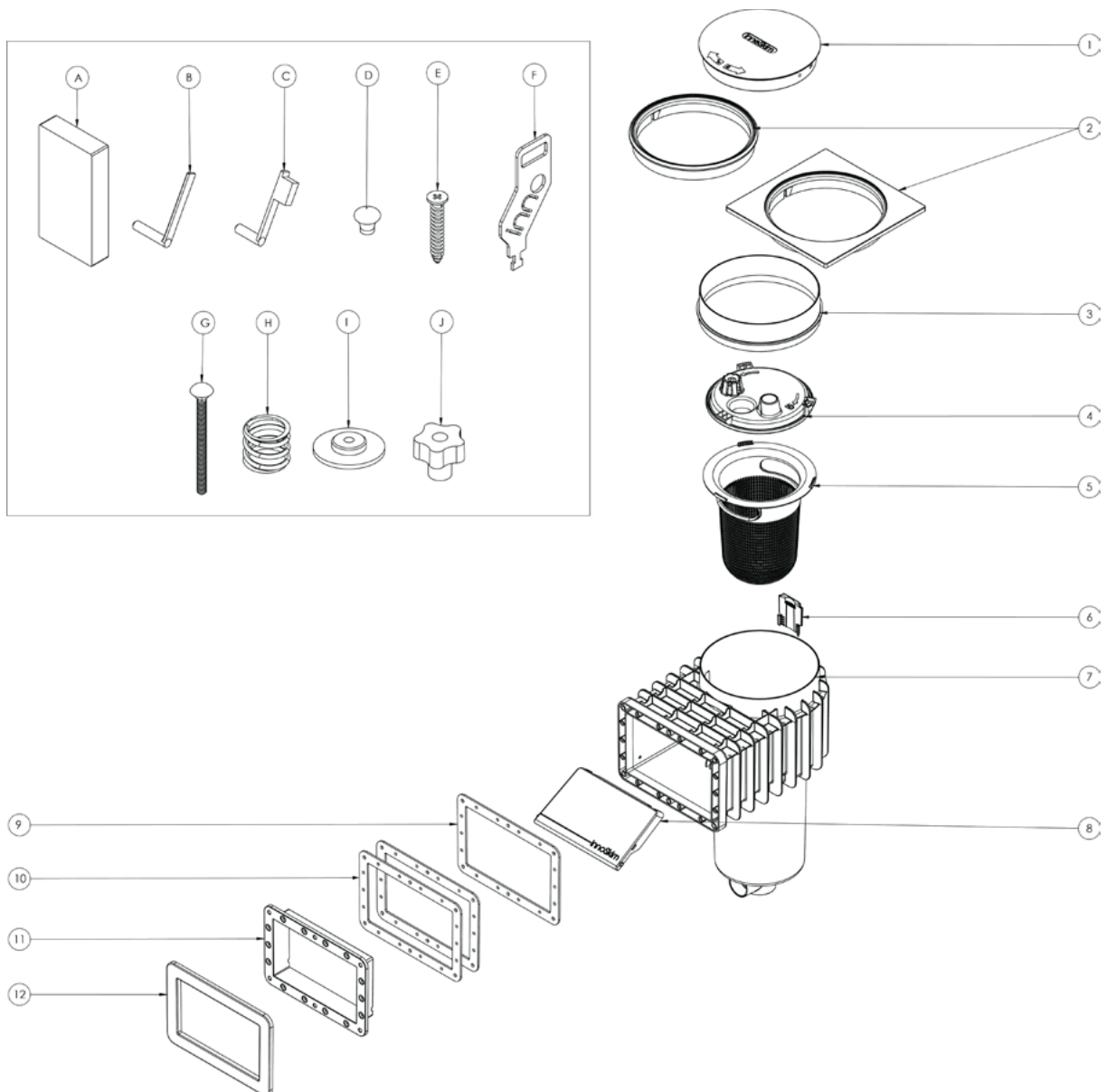
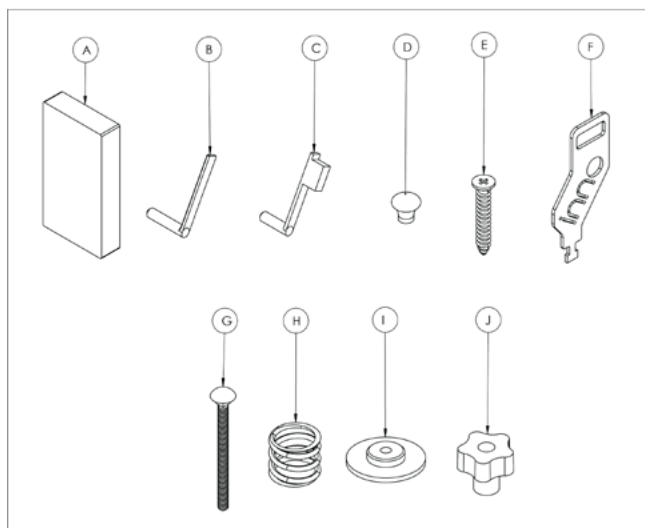
Gemini Enduro Twin Speed

Part No.	Product Description	Diagram No.
22020005	Mechanical Seal	4
34412	Impellor Replacement Kit - Red 1.0HP	
	11040045 - Impellor - SQ Red	5
	23010028 - Diffuser Plate	6
	22020006 - Diffuser Gasket	7
32214	Impellor Replacement Kit - Black 1.5HP	
	11040033 - Impellor - SQ Black	5
	23010028 - Diffuser Plate	6
	22020006 - Diffuser Gasket	7
22020007	Housing Gasket	8
23010068	Body Pump - EP Enduro Black	9
22010017	Swivel Coupling O-Ring	10
11040003	Swivel Coupling Complete - (2 of each)	10, 11, 12
23010144	Pot Strainer - EP Pump Black	14
23010063	Pump Basket	15
23010000	Pump Lid Gasket	16
23010066	Pump Lid	17
11040046	1.0hp - 14uF - Gemini - PCB Replacement Kit	28, 29
35112	1.5hp - 30uF - Gemini - PCB Replacement Kit	28, 29



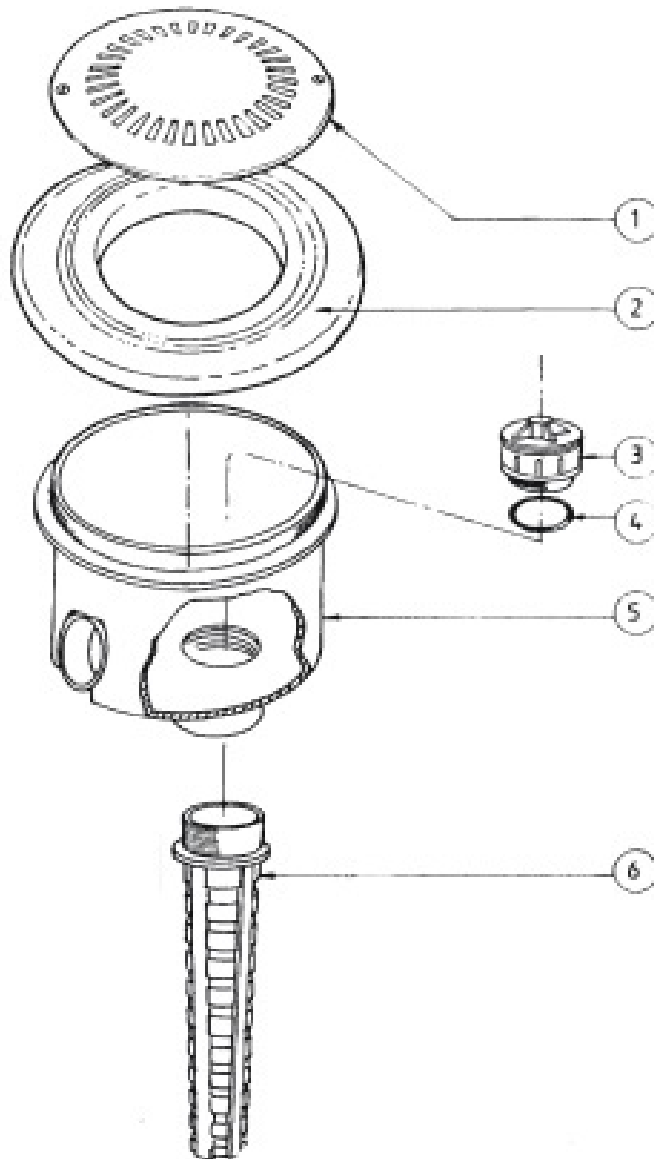
innoSkim Skimmer

Part No.	Product Description	Diagram No.	Part No.	Product Description	Diagram No.
11090048	innoSkim Lockable Deck Lid Round Beige	1, 2	23010629	InnoSkim Deep Leaf Basket	5
11090049	innoSkim Lockable Deck Lid Round Grey	1, 2	11100008	Innoskim Weir Door Assembly Complete White	8
11090050	innoSkim Lockable Deck Lid Round White	1, 2	11100009	Innoskim Weir Door Assembly Complete Grey	8
11090051	innoSkim Lockable Deck Lid Square Beige	1, 2	11100011	Innoskim Vinyl Gasket Kit	10
11090052	innoSkim Lockable Deck Lid Square Grey	1, 2	11090112	Innoskim Escutcheon Plate F/G Adaptor Kit Grey	11
11090053	innoSkim Lockable Deck Lid Square White	1, 2	11090111	Innoskim Escutcheon Plate F/G Adaptor Kit White	11
23010640	Innoskim Extension Ring White	3	23010627	InnoSkim Clip On Cover White	12
23010641	Innoskim Extension Ring Grey	3	23010628	InnoSkim Clip On Cover Grey	12
11100007	Innoskim Vacuum Plate Complete	4	11100010	Innoskim Key With Lanyard	F



Main Drain

Part No.	Product Description	Diagram No.
1100004	Main Drain Cover Kit with Screws	1, 2
11090037	Hydrostatic Valve Complete - Concrete	3, 4
23010604	Main Drain Stem - White	6





+61 7 3155 6531

splash@poolrite.com | orders@poolrite.com

poolrite.com