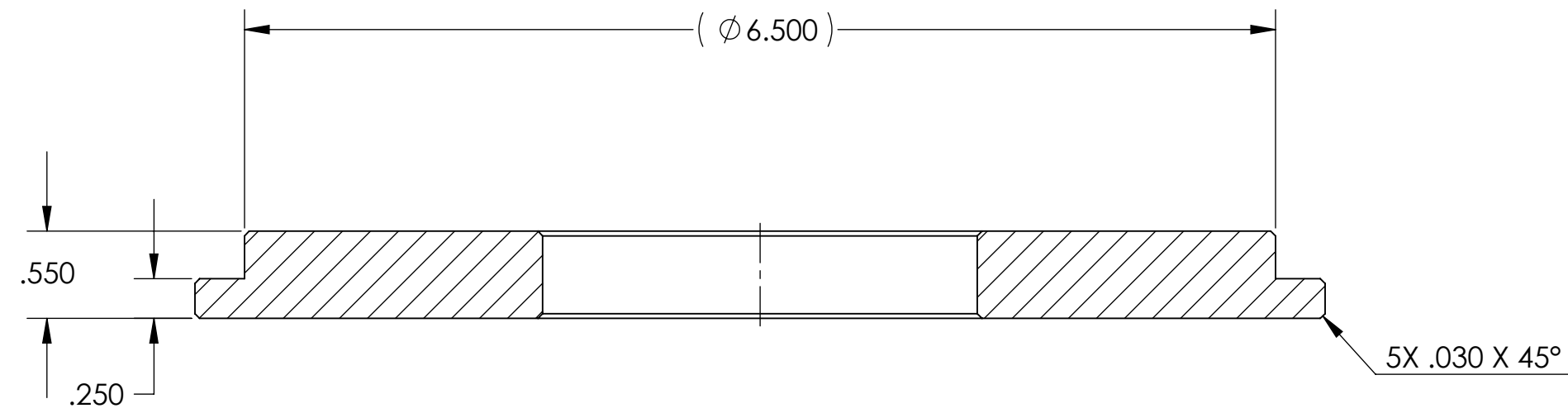
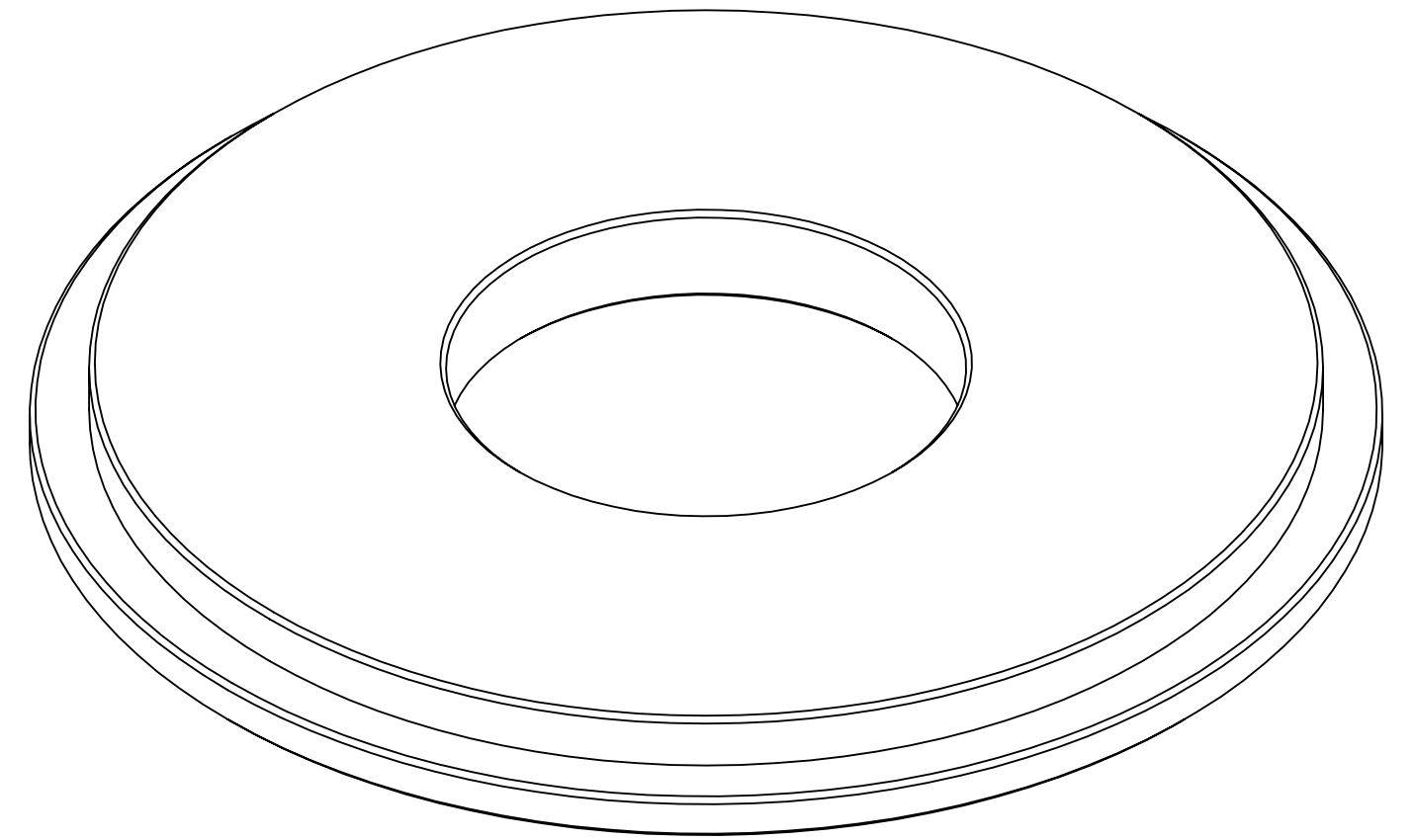
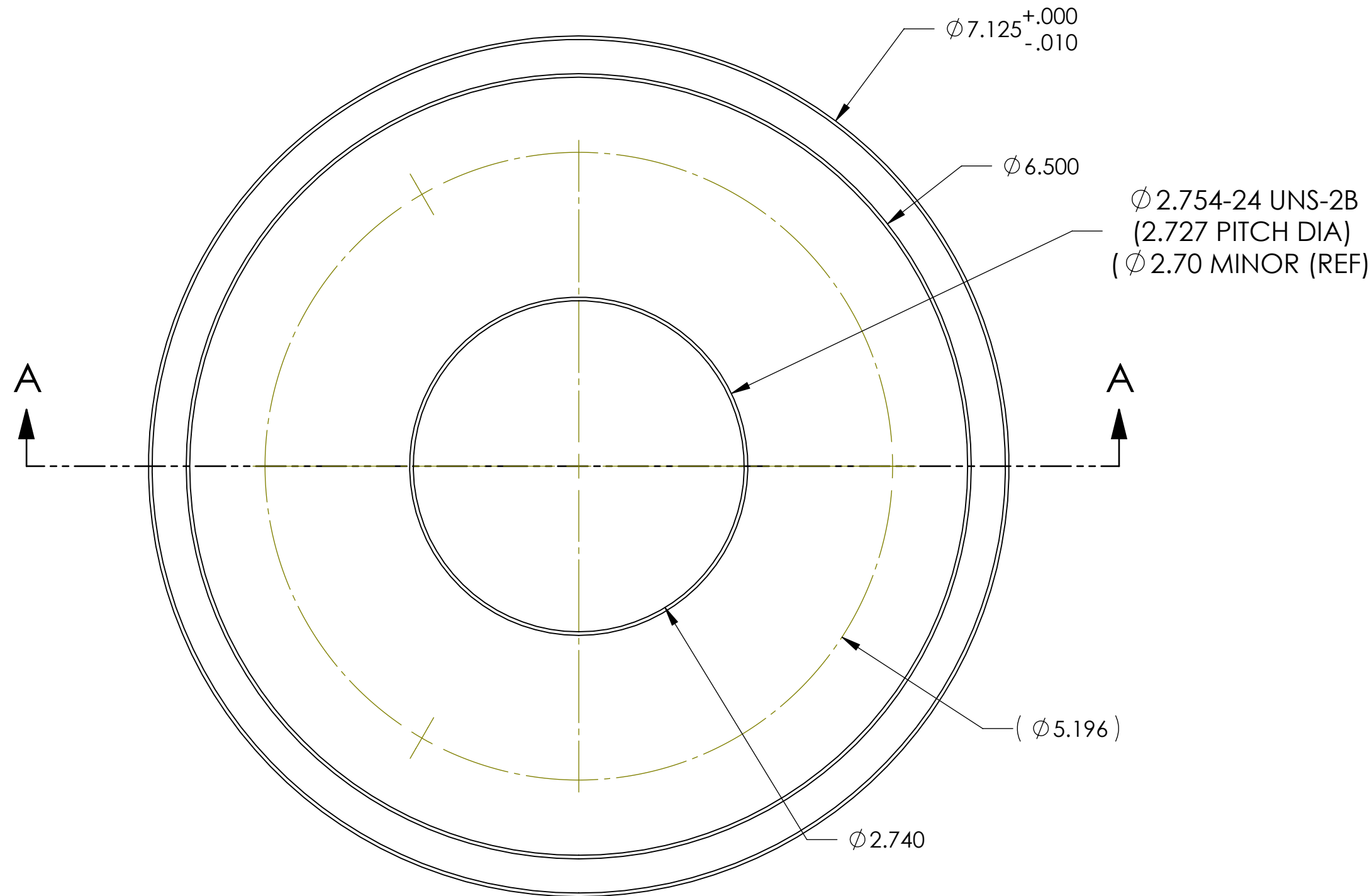


8 7 6 5 4 3 2 1

F
E
D
C
B
A

F
E
D
C
B
A



SECTION A-A

2. ANODIZE PER MIL-A-8625F, TYPE 2, CLASS 2, BLACK.
 1. ALL DIMENSIONS APPLY AFTER FINISH.
 NOTES: UNLESS OTHERWISE SPECIFIED

| | | | | | |
|---|------------------|------------------|------|-----------------------|-----------------------------|
| UNLESS OTHERWISE SPECIFIED TOLERANCES | | NAME | DATE | PlaneWave Instruments | |
| DECIMAL DIM | ANGULAR DIM | DRAWN | BP | | |
| .XXXX ± .0005 | MACHINED ±0° 30' | CHECKED | | | TITLE |
| .XXX ± .005 | LOCATING ±0° 30' | ENG APPR. | | | ADAPTER, CDK20 TO AP FEMALE |
| .XX ± .02 | FORMED ±1° | | | | |
| SURFACE FINISH | CHAMFERS ±5° | MATERIAL | | SIZE | DWG. NO. |
| MAX R 0.015 | | 6061-T6 AL ALLOY | | C | 600332 |
| BREAK ALL SHARP EDGES & REMOVE BURRS. | | FINISH | | REV. | |
| | | SEE NOTE | | A | |
| PROPRIETARY AND CONFIDENTIAL THE INFORMATION CONTAINED IN THIS DRAWING IS THE SOLE PROPERTY OF PLANEWAVE INSTRUMENTS. ANY REPRODUCTION IN PART OR AS A WHOLE WITHOUT THE WRITTEN PERMISSION OF PLANEWAVE INSTRUMENTS IS PROHIBITED. | | SCALE: 1:1 | | CAD FILE | 600332A |
| | | | | SHEET 1 OF 1 | |

8 7 6 5 4 3 2 1