

ENGLISH



exoplan

THE NEXT GENERATION

IMPLANT PLANNING SOFTWARE



exocad



“ Comprehensive digital solutions turned dentistry into a whole new experience.

As an early adopter for many years, I have observed, experienced and consulted on the development of guided surgery software.

The barrier to digital dentistry has been how to combine the crucial pieces of information and external skills needed to treat patients. The development of open and integrated platforms is transforming dentistry in much the same way as social media did with the Internet.

Now, with exoplan, I have a comprehensive solution to combine crucial pieces of implant planning information and turn them into results. The unique software platform from exocad allows me to connect and benefit from every possible device, free of barriers.

All tools are immediately accessible, from smile design through guided surgery to the manufacturing of the final prosthetic.

It continually improves our daily work and makes our treatments even more successful. It is an excellent benefit for our patients and the entire team, and it makes my life easier!

Uli Hauschild, owner of the dental laboratory Uli Hauschild Dental Design in San Remo and vice president of the Digital Dentistry Society

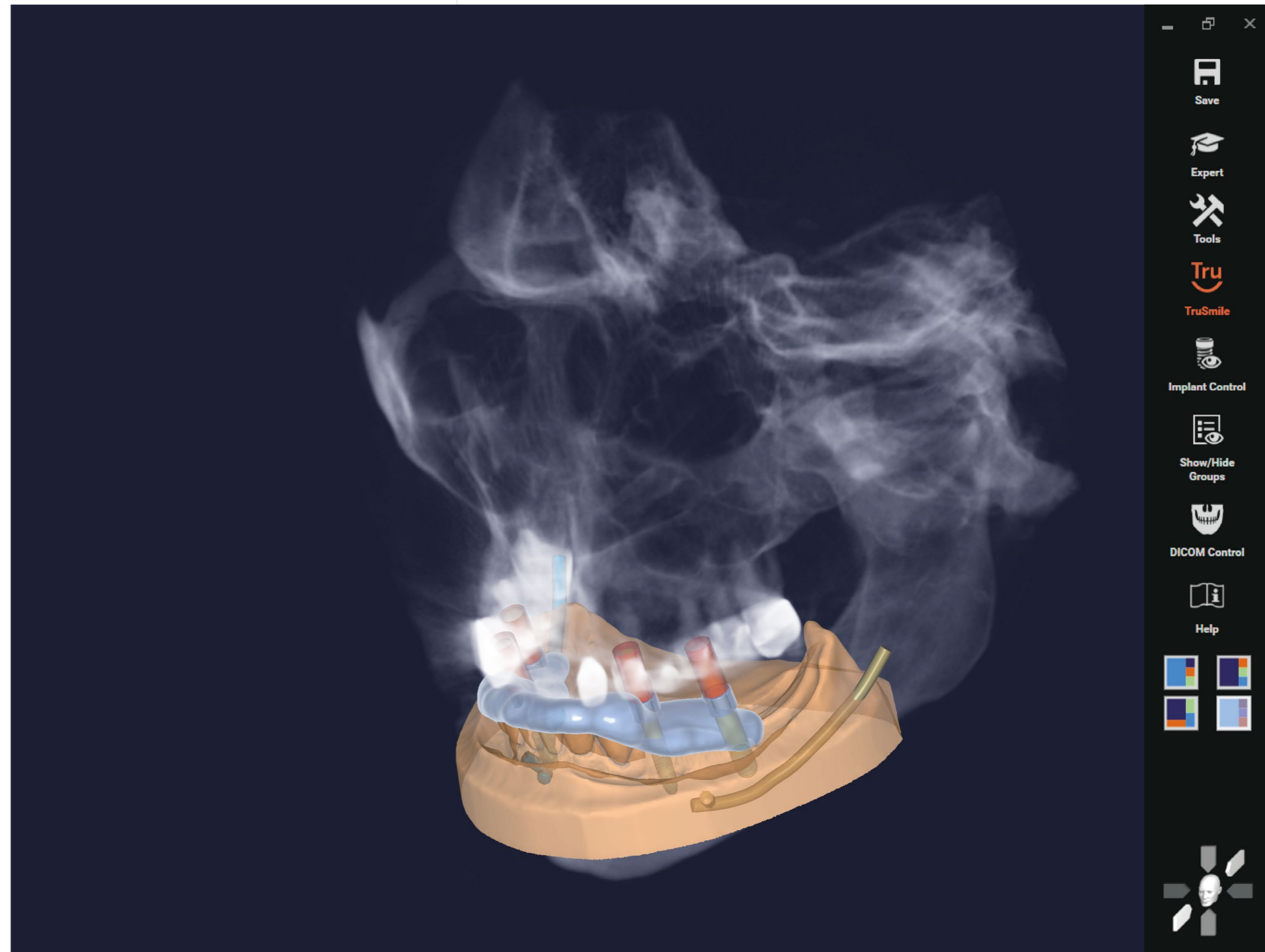
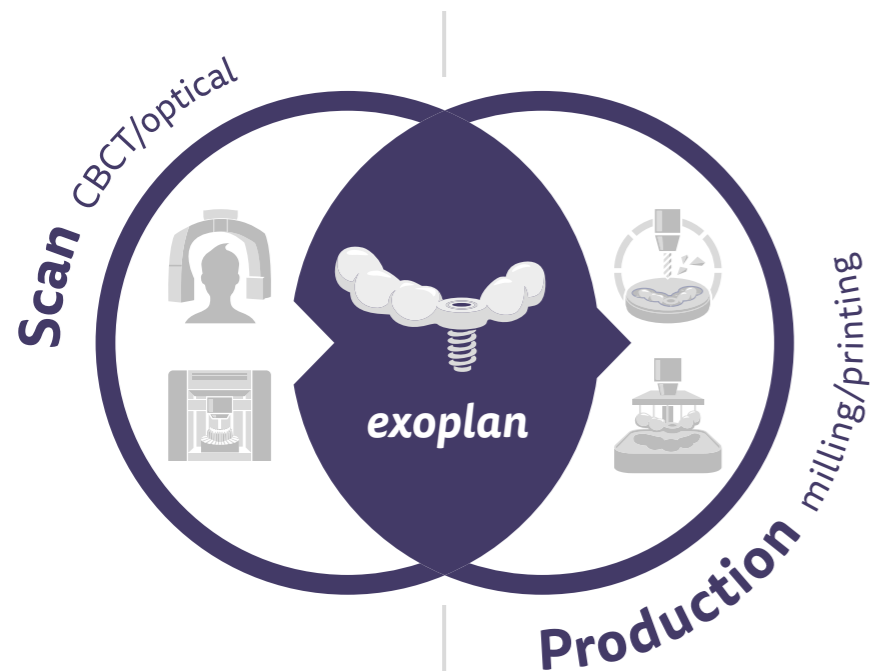
Innovative, intuitive, integrated

Your **implant planning** with *exoplan*

Discover our powerful implant planning and surgical guide design software *exoplan* – created to provide dental labs, dentists, implant specialists and surgeons with maximum flexibility. Based on the renowned *exocad* platform, *exoplan* guarantees a seamless digital workflow and the highest usability and performance.

exoplan guides dental professionals through the planning of implants and the design of surgical guides in one intuitive, digital workflow. Thanks to the open, vendor-neutral software architecture, open 3D scanners, 3D printers or milling machines can be used. Our integrated software solutions guarantee the seamless functionality of the digital workflow – from virtual, prosthetic-oriented implant planning with *exoplan* to designing surgical guides with our *Guide Creator*. Especially edentulous patients can be treated particularly precisely and predictably with guided surgery. In addition, *exoplan* users can take advantage of seamless integration with *DentalCAD*, *exocad*'s dental CAD software, to facilitate their planning and production of implant-supported, temporary and final prostheses. With the immediate load feature, popular for provisionals, the original prosthesis scan is automatically loaded into *DentalCAD*.

***exoplan* – our high-performance, user-friendly open software solution for your implant planning and surgical guide design.**

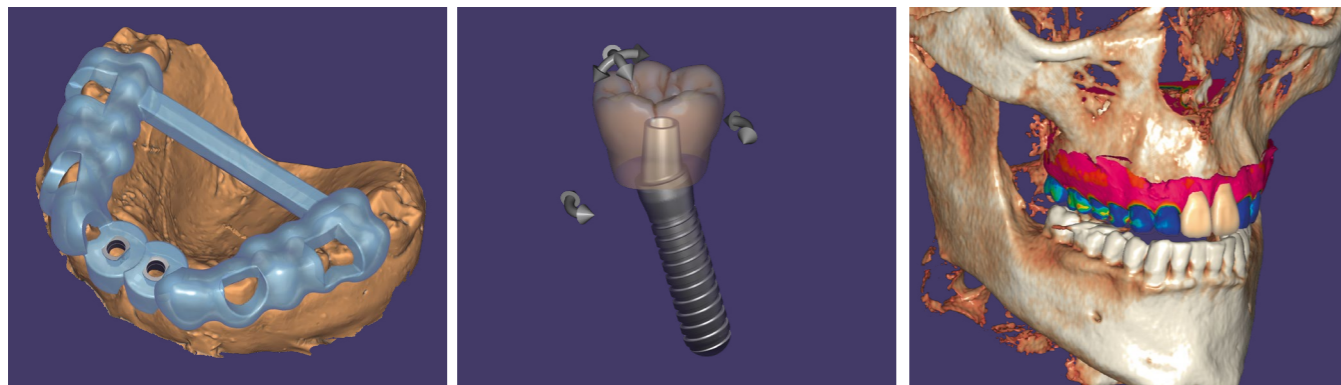




For more videos, information or contact details, visit [exocad.com/exoplan](https://www.exocad.com/exoplan) or simply scan the QR code.

Visualize, plan, create

Expand your service offerings with our innovative implant planning platform *exoplan* and its extensive features. With *exoplan*, the choice is yours! You can either plan and produce surgical guides in-house or outsource the planning, design or manufacturing. *exocad*'s proven wizard-based workflows guide you through each step of the process. Benefit from our broad library of implant systems and prosthetic components, which offer you and your customers greater flexibility and choice.



In-house surgical guides – with *Guide Creator* module

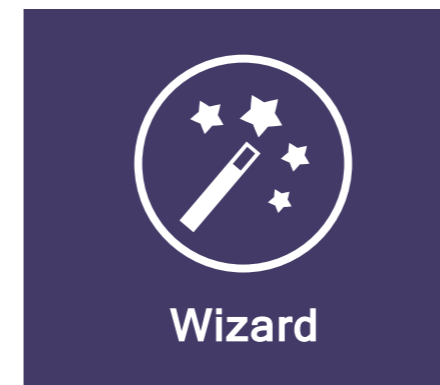
Design your own surgical guides and manufacture them in-house with your 3D printer or milling machine to maximize the return on hardware investments. Thanks to the standard data format STL, you have the freedom to choose your hardware and production center.

Free choice – comprehensive implant and component library

The *exoplan* library comprises over 520 different implant systems from top-tier manufacturers – such as Straumann, Nobel Biocare, Dentsply Sirona, Zimmer and Camlog – as well as numerous local suppliers. Users can also access *exocad*'s comprehensive library of over 60,000 compatible prosthetic components.

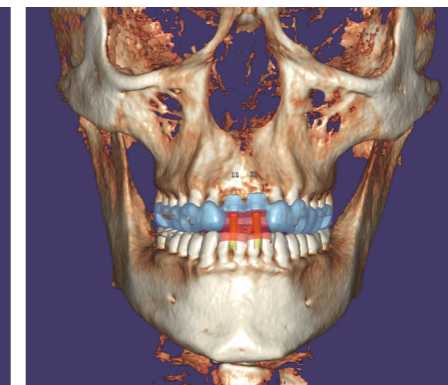
Highest accuracy – alignment of scan data

Combine CBCT and surface scan data of a model by taking advantage of *exoplan*'s robust alignment tools. Additional refinement features maximize the accuracy of the aligned scans.



High usability – wizard and expert modes

Thanks to *exoplan*'s intuitive guided approach, implant planning with consistent results has never been easier. *exocad*'s proven wizard-based workflow guides you through every step of the process. In *exoplan*'s expert mode, you can access extensive supplementary features and tools.



Ultra-fast – *exoplan*'s DICOM viewer

Get enthused with *exoplan*'s high speed in processing large CBCT files. Due to optimized data-handling algorithms and snappy graphics rendering, *exoplan* provides market-leading DICOM loading and visualization speed.



Secure – planning reports and surgical protocols

Facilitate your communication with surgeons through detailed reports and surgical protocols. Document every case and component configuration automatically.

Gain further insights on YouTube

Visit us on YouTube! On our channel, you will find stunning technology previews, useful video tutorials and informative quick guides which will help you to handle our products even better: [videos.exocad.com](https://www.youtube.com/exocad)



One of the most exciting advantages of *exoplan* is its platform – the worldwide renowned and leading *exocad* CAD software. It makes *exoplan* a very proven and stable software application with numerous user benefits. *exoplan* can easily and seamlessly be integrated with all *exocad* products and modules related to implant indications. Our software solutions offer you the perfect symbiosis of prosthetics and implant planning – for reliable results that are cost and time efficient.

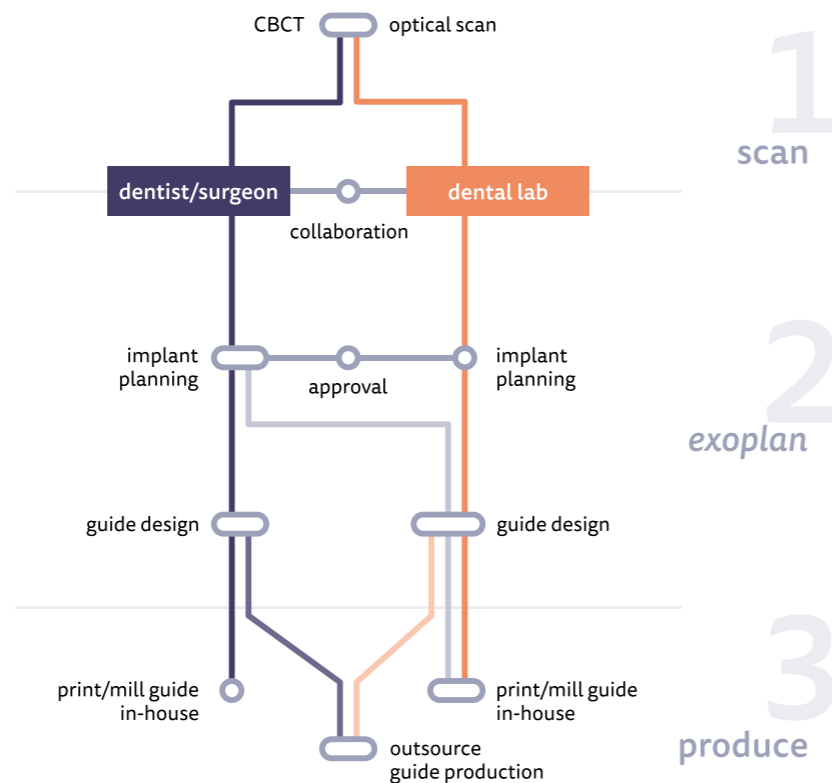
**ONE
PLATFORM**
all digital dentistry
solutions

Exceptional flexibility with *exoplan*

Control every step according to your requirements

Implantology is an integral part of modern patient treatment. It can involve many steps and parties from implant planning to surgical guide design and manufacturing. Enjoy freedom of choice and manage your individual process for guided surgery with *exoplan*!

Thanks to open yet integrated solutions for digital dentistry, you are in control of the desired workflows. While surgeons may only need our *exoplan* planning tools, dental practices and laboratories benefit from the complete solution, including our *Guide Creator* module.



Diversity in every field

Comprehensive selection of implant libraries

To allow for the optimum use of *exoplan*, exocad provides a large range of validated and tested implant, drill and drill sleeve libraries for customers to download free of charge. The range is expanded every day. Manufacturer-independent platform switching concepts are supported, as is the option of using

compatible components from third-party providers in the original manufacturer workflow. The extensive selection of leading implant manufacturers allows for the free choice and use of any preferred implant system. Find the latest overview at: [exocad.com/exoplan-libraries](https://www.exocad.com/exoplan-libraries)

A selection of *exoplan* library partners

AlphaBio Implantology alpha-bio.net	Anthogyr PRIME MOVER IN IMPLANTOLOGY anthogyr.com	ARGON ARGON DENTAL & DENTAL SUPPORT argon-dental.de	BIOHORIZONS SCIENCE • INNOVATION • SERVICE biohorizons.com	camlog camlog.com	Conexão Sistemas de Prótese conexao.com.br
Dentsply Sirona dentsplyimplants.de	IMPLANT DIRECT implantdirect.com	implant system KLOCKNER klockner.es	MEDENTIKA A Straumann Group Brand medentika.de	MEGA GEN imegagen.com	MIS MAKE IT SIMPLE mis-implants.com
Neo Biotech Satisfaction to Dentists neobiotech.eu.com	NEODENT A Straumann Group Brand neodent.com.br	neoss neoss.com	Nobel Biocare nobelbiocare.com	NT digital implant technology nt-trading.com	OSSTEM IMPLANT osstem.de
S. I. N. Implant System sinimplantsystem.com.br	SOUTHERN IMPLANTS southernimplants.de	straumann straumann.com	sweden & martina sweden-martina.com	THOMMEN Medical thommenmedical.de	ZIMMER BIOMET Your progress. Our promise. zimmerbiometdental.com

Please note that some libraries detailed on this page may not be regulatory cleared, released or licensed for sale in all markets.

No hidden costs

Maximize your profits with our simple and transparent pricing model. *exoplan* has no click fees and no hidden costs. With a low annual fee – which includes updates to future versions – you have access to our software for an unlimited number of cases. The modular software structure with our implant planning component and *Guide Creator* module ensure that you only pay for what you really need. Thanks to its open and vendor-neutral software architecture, you can use *exoplan* with your existing equipment, such as any open 3D scanner, milling machine or 3D printer.

Purchase exocad through one of our many partners

Rather than selling directly, exocad works with manufacturers, system integrators and dealers to provide integrated solutions, tailored for you. Our resellers provide their customers with extensive training and competent support. For comprehensive product support, offers or more information, contact one of our partners.

Find your partner at: [exocad.com/partners](https://www.exocad.com/partners)

At a glance

Why dental experts trust our software solutions

1 Faster and more efficient
Our users save time with our robust, high-performance software that runs quickly, even when processing large and complex cases.

2 Complex cases simplified
The cases may be complex, but using our software is easy.

3 Flexible software, flexible business model
We offer maximum flexibility and freedom through our modular and open approach. Customers can mix and match modules, buy perpetual CAD software licenses or rent the software at attractive rates.

4 Reliable
We focus on the details when developing our software. That's why exocad products are known for their reliability.

5 Independent and innovative
Our open platform software puts our customers at the forefront of digital dentistry. Our engineers and researchers continuously push the boundaries of dentistry.

6 Truly future-proof
We're the dental CAD/CAM software provider with a wide choice of integrated solutions using third-party scanners, mills, printers and materials. We are always open to new ideas, ready to support today's and tomorrow's best innovations.

exocad and exoplan

Your benefits at a glance

For general dentists and implant specialists

Improve your restorative results
exoplan supports prosthetic-driven planning.

Work with your preferred implant system
exoplan offers extensive implant libraries.

Opt for in-house or outsourced production
exoplan offers flexible workflows.

Make the most of your devices
exoplan is compatible with open systems.

Engage patients during the implant planning process
exoplan provides previews of the esthetic outcome.

Collaborate effortlessly with partners
exoplan's output can be directly imported into leading lab CAD/CAM systems.

Simplify your documentation
exoplan generates automatic case reports.

Benefit from a transparent pricing model
exoplan has no hidden costs or click fees.

Produce your own surgical guides
exoplan supports open 3D printers or milling machines.

Benefit from our proven software platform – exocad software has been established in labs for more than 10 years.

For dental laboratories

Expand your service offerings
exoplan enables implant planning and surgical guide designs for in-house production.

Reduce rework and corrections
exoplan allows for prosthetic-driven planning.

Create predictable restorations
exoplan accesses exocad's comprehensive library of over 3,500 systems with more than 60,000 prosthetic components.

Work with your existing equipment
For surgical guide production, *exoplan* supports 3D printers and milling systems that can process open file formats.

Improve collaboration
exoplan facilitates the communication with your clients for improved and predictable outcomes.

Integrate workflows seamlessly
exoplan interoperates with exocad's *DentalCAD*.

Benefit from a transparent pricing model
exoplan has no hidden costs or click fees.

Apply your experience using exocad's *DentalCAD*
exoplan offers you a familiar user experience.

SUCCESSFUL FOR
10+
YEARS

USERS IN OVER
150
COUNTRIES

MORE THAN
45,000
INSTALLATIONS

Our solid foundation – dental CAD software from exocad

exocad was founded under the principle of being truly open and connected. As the leading OEM manufacturer for dental CAD software worldwide, our core competence is to establish interoperability standards. Manufacturers can thus integrate their databases, products, libraries and services. These integrations allow companies to focus on their core business while we continue to expand the depth of supported indications.

Headquarters, Germany

exocad GmbH
Julius-Reiber-Str. 37
64293 Darmstadt
Germany

+49 6151 629489-0
info@exocad.com

America

exocad America, Inc.
7 Wheeling Ave, Suite 1
Woburn, MA 01801
USA

+1855 - EXO-4CAD (396-4223)
info@us.exocad.com

Asia

exocad Asia Ltd.
Unit 1001, 10/F, Mira Place Tower A,
132 Nathan Road, Tsim Sha Tsui,
Kowloon, Hong Kong

+852 392 85-593
info@asia.exocad.com

Benelux

exocad Benelux S.à.r.l.
2, rue de Drinklange
9911 Troisvierges
Luxembourg

+352 278061-456
info@exocad.com

UK

exocad UK Ltd.
Queensway Business Centre
Middlesbrough, TS3 8BQ
UK

+44 1642 843-016
info@exocad.com

Your exocad dealer

No dealer stamp here? Please visit [exocad.com/partners](https://www.exocad.com/partners)

Some products may not be regulatory cleared/released for sale in all markets.
Please contact your local exocad reseller for current product assortment and availability.