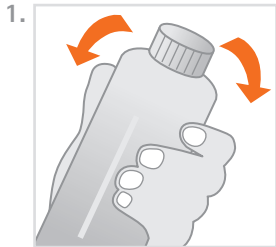


Generative Resin GR-13.1 LCD model

Instructions

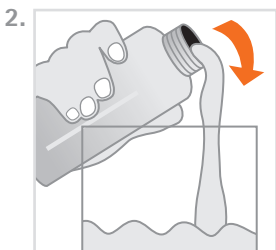
pro3dure medical GmbH

Am Burgberg 13
D - 58642 Iserlohn
Tel. +49 (0)2374 920050-0
Fax +49 (0)2374 920050-50
info@pro3dure.com
www.pro3dure.com



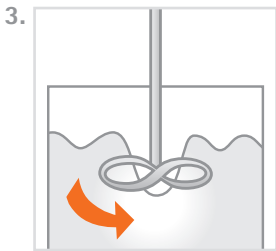
1. Product description

pro3dure's generative resin **GR-13.1 LCD model** is a resin for the production of dental models based on a LCD image projection system (≥ 405 nm). The formulation of **GR-13.1 LCD model** is optimized for the requirements of a robust production guaranteeing constant high quality. The material can be used for build processes with layer thicknesses from 10 up to 100 μm . It is recommended to use the pro3dure medical curing device **CD-1** or **CD-2** for post curing.



2. Processing

- **GR-13.1 LCD model** bottles should be well shaken before use (fig 1).
- Make sure that **GR-13.1 LCD model** material is temperature adjusted up to 23 °C to 30 °C.
- Carefully pour **GR-13.1 LCD model** into the vat of the image projection-unit (fig 2).
- Bubbles can be removed with a cleaned spatula or by a recoater routine.
- For the machine parameter adjustment please refer to the Technical Data Sheet.
- After the build process is finished a direct post treatment is recommended. If this cannot be guaranteed leave the produced objects in the liquid **GR-13.1 LCD model** resin.
- After cleaning of the parts with isopropanol $\geq 97\%$ (approx. 3-5 min. in an ultrasonic bath) the objects are postcured in an adequate light curing unit (e.g. pro3dure's **CD-1** or **CD-2** for a period of 3-4 min.) in a protective gas atmosphere.
- Dental models generated out of the generative resin **GR-13.1 LCD model** can be coated and repaired as usual. For this purpose the pro3dure products e.g. L-1 UV lacquer are recommended.
- Impurities due to operation mistakes cannot be excluded. With respect to the low viscosity of the resin it is possible to filtrate the **GR-13.1 LCD model**. It is recommended to filtrate and stir up the resin on a regular base. If opaque material is used additionally mix the content with a propeller mixer carefully. To avoid bubbles let **GR-13.1 LCD model** rest for 30 min. before usage.



Contains: Alkoxilated bisphenole-A-dimethacrylate, initiators, dyes, stabilisers, and pigments

3. Important

- To avoid detrimental effects on material quality do not expose the liquid material to irradiation under any circumstances.
- Deviations from the described manufacturing process may lead to different mechanical and optical properties of the **GR-13.1 LCD model** material.
- Ensure personal protective gear during processing.
- Caution: Polymerised resins are chemically resistant - avoid stains on clothing!
- Avoid any contact with skin and eyes. In case of accidental contact, rinse with adequate running water, consulting a doctor if necessary.
- The lot number and the best before date are indicated on each **GR-13.1 LCD model** packaging. In case of claims please always indicate the lot number of the product. Do not use the product after expiry of the best before date.

**GR-13.1
LCD model**

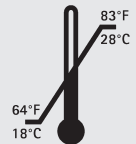
Safety advice

pro3dure medical GmbH is not liable for any damages caused by improper application of the material. To be used by trained specialist personnel for the purpose indicated only.

Product description:
photopolymerizable resin for LCD based production of dental models

Technical data:

- Colour: creme white opaque
- Density: ca. 1.1 g/ml
- Viscosity: ca. 0,7 Pa s
- Post cured material: (depends on postcuring unit)
Elastic modulus: ca. 1700 MPa
Flexural strength: ca. 90 MPa
Elongation at break: ca. 10 %
Hardness: ca. 80 Shore D
- Storage:



Ordering information:

Standard packing:

1 kg bottle,
creme white opaque
item no.: D1001606

These data result from measurements of a representative sample, which were determined within the scope of our quality assurance.

idea to product.