

**Data Sheet**

- 01 Product Name**  
Temp Esthetic
- 02 Material Description**  
Esthetic Provisional
- 03 Manufacturer**  
Harvest Dental Products, LLC  
905 Columbia Street  
Brea, California 92821  
Phone: +1 714 674 7400  
Email: hello@harvestdental.com  
Web: www.harvestdental.com
- 04 Product Description**  
Temp Esthetic is a multi-layer composite PMMA suitable for cemented and screw restrained dental prosthetics for long term and provisional prosthetics.
- 05 Strength**  
Double cross link polymer (>100 Mpa)
- 06 Composition**  
Methyl Poly-methyl and Nontoxic Pigments
- 07 Package**  
1 part
- 08 Heights (mm)**  
16, 20, 25
- 09 Shades**  
BL2, A1, A2, A3, A3,5, A4, B1, B2, C1, C2, C3, D2, D3

**Instructions for Use**

- 10 User Instructions:**  
Temp Esthetic is used in milling techniques to manufacture cemented or screw retained provisional and removable prosthetics.
  1. Attach the block on the machine following the equipment manufacturer's instructions.
  2. When using Temp Esthetic, the incisal intensity in the element is provided by the crown position in the shaft perpendicular to the block layers [Images on right 1, 2, 3].
  3. After the machining, remove the block from the equipment and remove the element from the block. For finishing, handpiece polish using Harvest Temp Finish and a HP bristle brush.

**11 Important Notes**

Avoid overheating during the machining and finishing.

- 12 Limits**  
Posterior: Max. 2 fixed pontics.  
Minimum thickness: 1 mm occlusion and 0.6 mm cervical.  
Minimum connection diameters: Anterior: 3.6 mm;  
Posterior: 4.4 mm.

The provisional can be fixed with all cements for temporary fixation. Note: Eugenol temporary cements may decrease the effectiveness of resin cements.

- 13 Storage**  
Keep away from light and heat.

**14 Typical mechanical properties of the blocks**

<b>Elasticity Module</b>	> 2.200 Mpa
<b>Bending Resistance</b>	> 100 Mpa
<b>Impact Resistance [Charpy]</b>	> 10 KJ/m2 [zod]: >1.3 KJ/m2
<b>Traction Resistance</b>	> 75 Mpa
<b>Vickers Hardness [0.05/10]</b>	> 135
<b>Eater Sorption ISO 10477</b>	< 20µg/mm3
<b>Eater Solubility</b>	< 0,8 µg/mm3
<b>Residual monomer</b>	[24 h at 37°C and 30 min in air]: <0.7%
<b>Burning Residue</b>	[2 h 500°C] [Colorless]

- 15 FDA 510K Register# K132937**

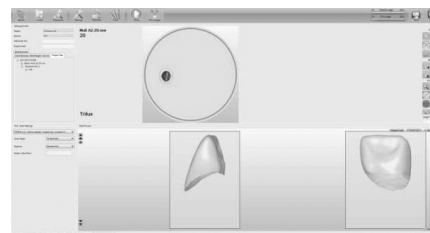


Image 1

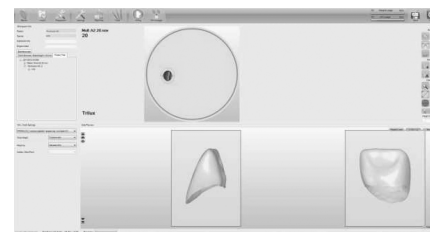


Image 2

Illustrative images of the element placed in different heights show the increase or decrease of dentin and enamel variants. To each CAD/CAM system there is a different way of placement

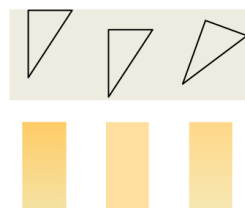


Image 3



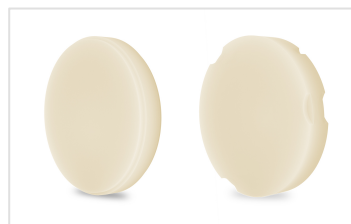
Image 4

16

**Ordering information**

10034-16	Temp Esthetic	Open	98.5 x 16 mm	BL2
10034-20	Temp Esthetic	Open	98.5 x 20 mm	BL2
10034-25	Temp Esthetic	Open	98.5 x 25 mm	BL2
10036-16	Temp Esthetic	Open	98.5 x 16 mm	A1
10036-20	Temp Esthetic	Open	98.5 x 20 mm	A1
10036-25	Temp Esthetic	Open	98.5 x 25 mm	A1
10038-16	Temp Esthetic	Open	98.5 x 16 mm	A2
10038-20	Temp Esthetic	Open	98.5 x 20 mm	A2
10038-25	Temp Esthetic	Open	98.5 x 25 mm	A2
10040-16	Temp Esthetic	Open	98.5 x 16 mm	A3
10040-20	Temp Esthetic	Open	98.5 x 20 mm	A3
10040-25	Temp Esthetic	Open	98.5 x 25 mm	A3
10039-16	Temp Esthetic	Open	98.5 x 16 mm	A3.5
10039-20	Temp Esthetic	Open	98.5 x 20 mm	A3.5
10039-25	Temp Esthetic	Open	98.5 x 25 mm	A3.5
10043-16	Temp Esthetic	Open	98.5 x 16 mm	A4
10043-20	Temp Esthetic	Open	98.5 x 20 mm	A4
10043-25	Temp Esthetic	Open	98.5 x 25 mm	A4
10041-16	Temp Esthetic	Open	98.5 x 16 mm	B1
10041-20	Temp Esthetic	Open	98.5 x 20 mm	B1
10041-25	Temp Esthetic	Open	98.5 x 25 mm	B1
10042-16	Temp Esthetic	Open	98.5 x 16 mm	B2
10042-20	Temp Esthetic	Open	98.5 x 20 mm	B2
10042-25	Temp Esthetic	Open	98.5 x 25 mm	B2
10045-16	Temp Esthetic	Open	98.5 x 16 mm	C1
10045-20	Temp Esthetic	Open	98.5 x 20 mm	C1
10045-25	Temp Esthetic	Open	98.5 x 25 mm	C1
10046-16	Temp Esthetic	Open	98.5 x 16 mm	C2
10046-20	Temp Esthetic	Open	98.5 x 20 mm	C2
10046-25	Temp Esthetic	Open	98.5 x 25 mm	C2
10047-16	Temp Esthetic	Open	98.5 x 16 mm	C3
10047-20	Temp Esthetic	Open	98.5 x 20 mm	C3
10047-25	Temp Esthetic	Open	98.5 x 25 mm	C3
10049-16	Temp Esthetic	Open	98.5 x 16 mm	D2
10049-20	Temp Esthetic	Open	98.5 x 20 mm	D2
10049-25	Temp Esthetic	Open	98.5 x 25 mm	D2
10050-16	Temp Esthetic	Open	98.5 x 16 mm	D3
10050-20	Temp Esthetic	Open	98.5 x 20 mm	D3
10050-25	Temp Esthetic	Open	98.5 x 25 mm	D3
30060-16	Temp Esthetic	Zirkon	95 x 16 mm	BL2
30060-20	Temp Esthetic	Zirkon	95 x 20 mm	BL2
30060-25	Temp Esthetic	Zirkon	95 x 25 mm	BL2
30062-16	Temp Esthetic	Zirkon	95 x 16 mm	A1
30062-20	Temp Esthetic	Zirkon	95 x 20 mm	A1
30062-25	Temp Esthetic	Zirkon	95 x 25 mm	A1
30064-16	Temp Esthetic	Zirkon	95 x 16 mm	A2
30064-20	Temp Esthetic	Zirkon	95 x 20 mm	A2
30064-25	Temp Esthetic	Zirkon	95 x 25 mm	A2

30066-16	Temp Esthetic	Zirkon	95 x 16 mm	A3
30066-20	Temp Esthetic	Zirkon	95 x 20 mm	A3
30066-25	Temp Esthetic	Zirkon	95 x 25 mm	A3
30063-16	Temp Esthetic	Zirkon	95 x 16 mm	A3.5
30063-20	Temp Esthetic	Zirkon	95 x 20 mm	A3.5
30066-25	Temp Esthetic	Zirkon	95 x 25 mm	A3.5
30065-16	Temp Esthetic	Zirkon	95 x 16 mm	A4
30065-20	Temp Esthetic	Zirkon	95 x 20 mm	A4
30065-25	Temp Esthetic	Zirkon	95 x 25 mm	A4
30067-16	Temp Esthetic	Zirkon	95 x 16 mm	B1
30067-20	Temp Esthetic	Zirkon	95 x 20 mm	B1
30067-25	Temp Esthetic	Zirkon	95 x 25 mm	B1
30068-16	Temp Esthetic	Zirkon	95 x 16 mm	B2
30068-20	Temp Esthetic	Zirkon	95 x 20 mm	B2
30068-25	Temp Esthetic	Zirkon	95 x 25 mm	B2
30071-16	Temp Esthetic	Zirkon	95 x 16 mm	C1
30071-20	Temp Esthetic	Zirkon	95 x 20 mm	C1
30071-25	Temp Esthetic	Zirkon	95 x 25 mm	C1
30072-16	Temp Esthetic	Zirkon	95 x 16 mm	C2
30072-20	Temp Esthetic	Zirkon	95 x 20 mm	C2
30072-25	Temp Esthetic	Zirkon	95 x 25 mm	C2
30073-16	Temp Esthetic	Zirkon	95 x 16 mm	C3
30073-20	Temp Esthetic	Zirkon	95 x 20 mm	C3
30073-25	Temp Esthetic	Zirkon	95 x 25 mm	C3
30075-16	Temp Esthetic	Zirkon	95 x 16 mm	D2
30075-20	Temp Esthetic	Zirkon	95 x 20 mm	D2
30075-25	Temp Esthetic	Zirkon	95 x 25 mm	D2
30076-16	Temp Esthetic	Zirkon	95 x 16 mm	D3
30076-20	Temp Esthetic	Zirkon	95 x 20 mm	D3
30076-25	Temp Esthetic	Zirkon	95 x 25 mm	D3



17

**Contact Harvest Dental**

If you would like to place an order, or need technical Support, please contact us using the info below.

Harvest Dental Products  
+ 1 714 674 7400  
hello@harvestdental.com  
[www.harvestdental.com](http://www.harvestdental.com)

**Thank you for reading. We appreciate your time.**