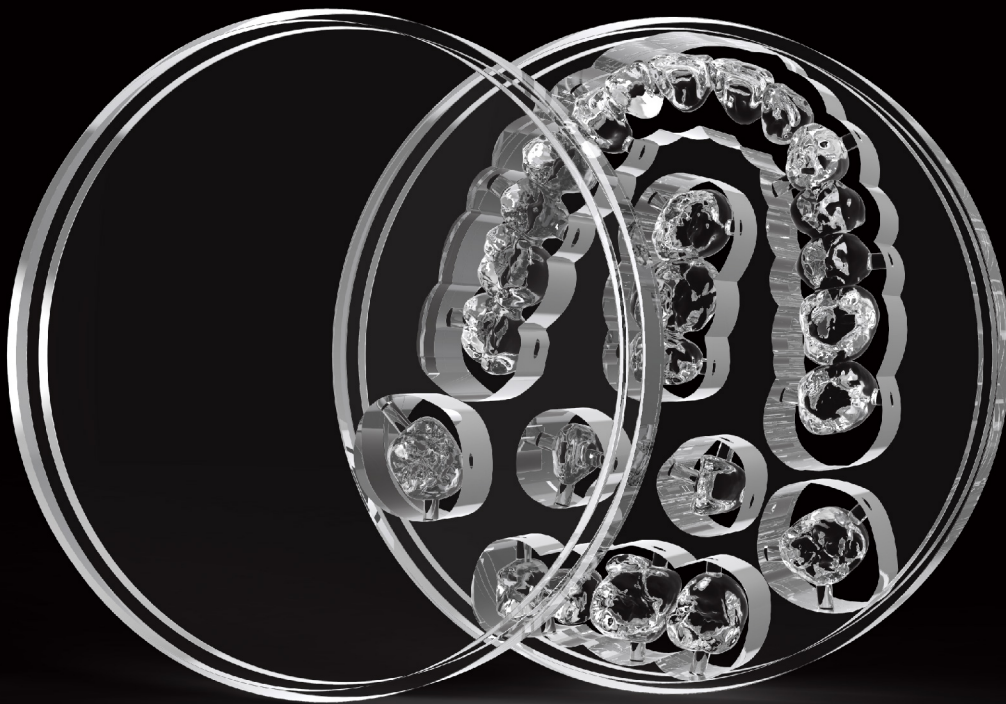


Aidite

Pmma Transparent Resin Use Guidance



■ Make People Healthier and More Beautiful



Building Dental Ecosphere with Science and Technology

CONTENTS

I Product description	01
• Material ingredient	01
• Material composition	01
• Code information	01
• Indications	01
• Storage	01
• Danger warning	01
II Production process	02
• Scanning	02
• CAD design	02
• Typesetting cutting	02
• Polished	02



I .Product Introduction

The PMMA transparent resin block is composed of machinable PMMA colorless resin with good transparency and effective strength. It is mainly used for the production of occlusal pads, and can also be used for cutting and casting of dental support implant guides.

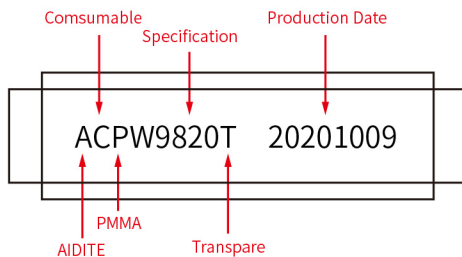
1.Material composition

Polymethylmethacrylate (PMMA)

2.Material properties

Bending strength	≥120[MPa]
Density	≥1.17 [g/cm ³]
Vickers hardness	≥25[HV1]
Water absorption value	≤25[μg/mm ³]
Solubility value	≤5[μg/mm ³]
system	Wieland/Amann/Zirkon/Sirona
Thickness	12/14/16/18/20/22/25/30

3.Code information



4.Indications

- Applicable repair type



Before casting



After casting



5.Storage

Store in a dry area between 10 °C and 30 °C to prevent direct sunlight and excessive humidity.

6.Danger warning

Dust is produced when cutting PMMA blocks, which can irritate to the eyes and respiratory tract. Therefore, it is necessary to ensure the normal operation of the exhaust system of the cutting machine and workplace and wear personal protective equipment. It is forbidden for those allergic to acrylate compounds and dust.

II Production process

1. Scanning

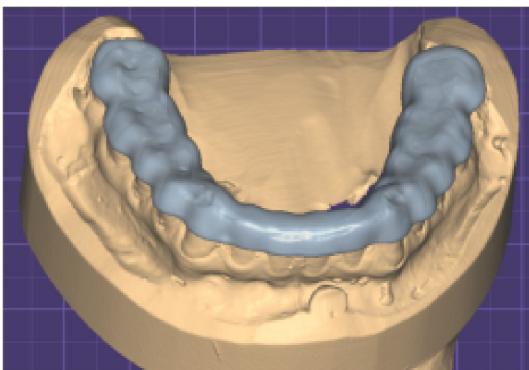
The intraoral scanner with an accuracy of 20-30 μm is used for scanning (Cameo intraoral scanner is recommended) to obtain the corresponding intraoral data model and transmit the scanning data to CAD design software for design.



2. CAD design

* Exo CAD is recommended for occlusal splint design.

- ① Choose the right track.
- ② Adjust the parameters of the virtual occlusal frame according to the actual occlusal frame.
- ③ Draw an edge line at the high point of tooth shape as far as possible.
- ④ Make the corresponding guiding surface according to the type of occlusal splint.
- ⑤ Remove bite and trim.



3. Typesetting cutting

- ① Regular maintenance and calibration of equipment. There is no shaking or abnormal noise during cutting. Parts should be replaced in time if there is any problem.
- ② Before cutting, check whether the needle sequence is correct.
- ③ Check whether the fixture is tightened before cutting to prevent the resin block from loosening during cutting, resulting in inaccurate cutting data.
- ④ The needle that has been cut with resin can't cut zirconia products.
- ⑤ During the cutting process, the air pressure should be kept at 6-8 bar, and the whole process should be free of water and oil to avoid pollution.
- ⑥ A large amount of debris will be produced in the process of resin cutting, which should be cleaned up with a vacuum cleaner in time.



4. Polished

It is very important to use the correct grinding tools to grind and adjust the restoration. If improper grinding tools are used, there will be edge grinding marks, or excessive temperature.

* Please follow the following grinding procedures:

- ① Use aidite resin special grinding head to repair the surface of the restoration, and use the following steps to make the surface smooth.

(1) Use a tungsten steel needle to remove the connecting rod.



(2) After removing the connecting rod, use a blade-shaped tungsten steel turning needle to grind off the excess connecting rod.



Completion effect

② Before grinding, please lay a towel on the tabletop to avoid damage when the restoration falls off the table.

③ Using appropriate grinding instruments, low rotation speed and light pressure can make the restoration not appear lamellar separation.

④ When grinding, the resin should not be overheated.

⑤ In the next step of treatment, make sure that the prosthesis has been carefully cleaned. And the excess grinding dust has been removed.

en.aidite.com



Aidite (Qinhuangdao) Technology Co.,Ltd.
Tel : 0086-335-8587898
Fax: 0086-335-8587198
Web: en.aidite.com
Email: info@aidite.com