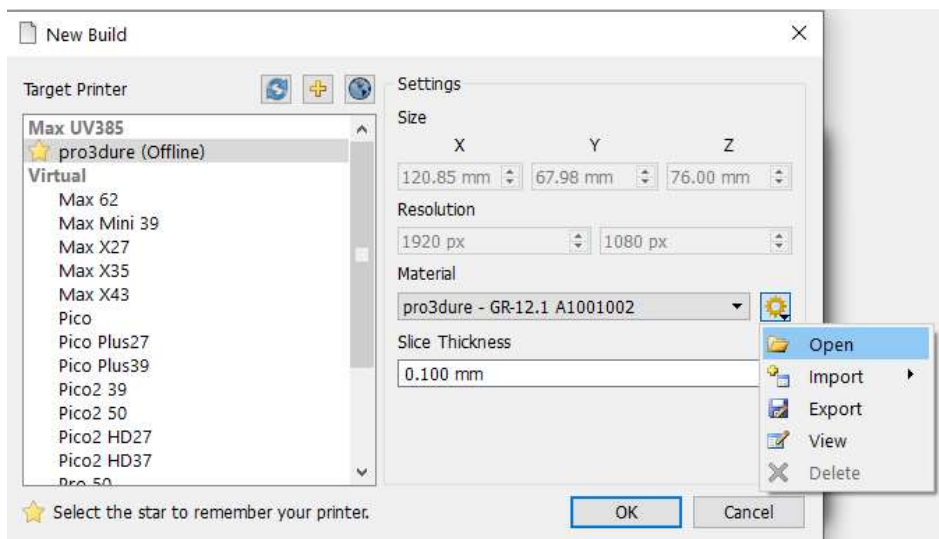


**Date: 09/14/2020**

Adding new material files to Asiga Composer.

1. First open Asiga Composer and select new build
2. Click on the sprocket wheel next to the material file.



3. There are two options to add material files
  - a. Select Open, this will bring you to where the material files are stored on your computer and simply drag and drop the new files in place
  - b. Select Import and add the material files you have to this folder
4. After files are added exit Asiga Composer and open Composer again to verify files have installed
5. You can also add or delete files you do not wish to have by going to the file location:  
C:\Program Files\Asiga\Composer\Materials
6. After adding or deleting any material files close Composer and restart the program.