



# plusfloor

## STORM PATHWAY

Storm Pathway is a competitive designer collection, inspired by colours and delineations created by stormy weather. A selection of functional colourways brought together, to give you a design that works alongside surrounding aesthetics in open plan spaces.

Contract  
Designer Carpet Tile

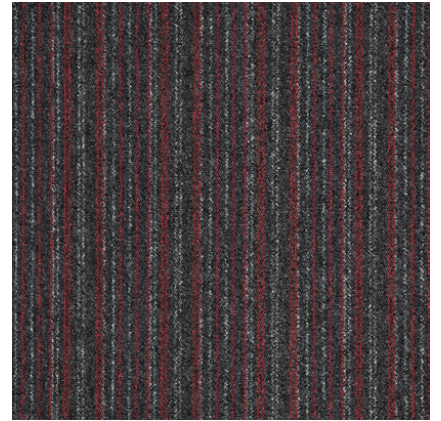




Gale Grey



Lightening Grey



Tornado Grey



Blizzard Blue

# plusfloor STORM PATHWAY

STORM PATHWAY is a competitive designer range, produced in four functional colourways with a modern linear design. This competitive heavy wear tile is ideal for hiding soil, making it suitable for a wide range of locations such as commercial workplaces, institutions and education environments.

- **Heavy Wear** – STORM PATHWAY has a 10 year commercial wear guarantee and is 550gr/m<sup>2</sup> which is designed to give excellent functionality in heavy wear areas
- **Design & Appearance** – With a colour palette of 4 linear designs this gives you flexibility and functionality when creating your space

## TECHNICAL SPECIFICATION

|                    |          |                                 |
|--------------------|----------|---------------------------------|
| Product definition |          | : Tufted loop pile              |
| Pile fibre         |          | : 100% Nylon SDN                |
| Pile weight        | ISO 8543 | : 550 gr/m <sup>2</sup> ± 5%    |
| Total thickness    | ISO 1765 | : 5 mm ± 7,5%                   |
| Total weight       | ISO 8543 | : 4000 gr/m <sup>2</sup> ± 7,5% |
| Tile size          |          | : 50 x 50 cm                    |
| Tile backing       |          | : Polyflex 70% Recycled         |
| Tiles per box      |          | : 20                            |

## PERFORMANCE

|   |                      |                                     |
|---|----------------------|-------------------------------------|
| Use classification                      |                      | : Class 33                          |
| Castor chair test                       | EN 985               | : A, continuous use                 |
| Thermal isolation Dimensional stability | ISO 8302<br>ISO 2551 | : 0.06 m <sup>2</sup> K/W<br>: Pass |

## ELECTROSTATIC PROPERTIES

|                |          |               |
|----------------|----------|---------------|
| Walk on test   | ISO 6356 | : -0.3 kV     |
| Static loading |          | : Anti-static |

## FLAME PROPERTIES

|                    |                                 |                        |
|--------------------|---------------------------------|------------------------|
| Reaction to fire   | EN ISO 11925-2<br>EN ISO 9239-1 | : B <sub>fl</sub> – s1 |
| Hot metal nut test | BS 4790                         | : Low Radius           |

## COLOUR FASTNESS PROPERTIES

|              |             |       |
|--------------|-------------|-------|
| Light        | ISO 105 B02 | : 7-8 |
| Rubbing, dry | ISO 105 X12 | : 4.5 |
| Rubbing, wet | ISO 105 X12 | : 5.0 |
| Shampoo      | BS 1006     | : 4.5 |
| Water        | ISO 105 E01 | : 5.0 |

## GENERAL

Recommended maintenance: Best results are obtained when cleaned with a dry shampoo method.

Pile direction: Directional arrows are printed on the back of each tile, can be laid Monolithic or Directional for best effect.

Laying instructions: PLUSFLOOR flooring products are to be installed in full accordance with recommended installation instructions. It is advisable to install using tackifier or spray adhesive.

PLUSFLOOR reserves the right to amend this specification without giving prior notice. For the latest version of the technical specifications email [info@plusfloor.com](mailto:info@plusfloor.com).

Please email [info@plusfloor.com](mailto:info@plusfloor.com) for further product details and sample requests.