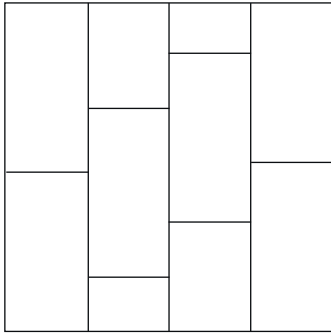


Nature's Core

Glue Down Vinyl Tile

Contact
 +44 (0) 1524 481 118
 info@plusfloor.com
 plusfloor.com



Tile
 610 x 305 x 2.5mm

Product

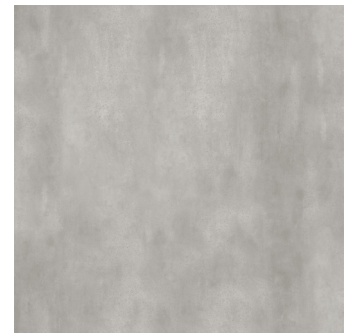
Fixing	Glue Down	
Finish	TrueGrain embossing	
Profile	Butt Joint	
Edge	Bevelled	
Wear Layer	0.55mm	
Pack Size	2.973m ²	16 tiles per box

Technical

Slip Resistance	36+ PTV (wet)	BS 7976-2 DIN51130
Water Resistance	Resistant	
Stain Resistance	Resistant	EN 423
Scratch Resistance	MSR-A2	EN 16094
Underfloor Heating	Suitable, max. 29°C	
Inflammability	Bfl-S1	EN 13501
Squareness	≤ 0.20mm	
Straightness	≤ 0.30mm	
Residual Indentation	~ 0.03mm	EN ISO 24343-1
Curling	≤ 2mm	EN ISO 23999
Dimensional Stability	≤ 0.15mm%	EN ISO 23999
Thermal Resistance R	0.039m ² K/W	EN 12667
Formaldehyde Group	E1	EN 717-1:2014
Castor Chair Resistance	Resistant	EN ISO 4918
Light Fastness	≥6	EN ISO 105-B02
Static Electrical Propensity	Antistatic (≤ 2 kV)	EN 1815
LRV	PLF2575	37.37%
	PLF2576	34.72%
	PLF2577	41.59%
	PLF2578	22.70%
Warranty (Years)	30 (Residential)	10 (Commercial)



Terrazzo
 PLF2575



Rocksalt
 PLF2577



Silestone
 PLF2576



Quartzite
 PLF2578

Installation and Warranty

All **PlusFloor** floors must be installed by a competent installer who will have the necessary skills and take individual site circumstances into account. **PlusFloor's** warranty will apply only to floors which have been installed by a competent flooring installer comparable to BS8201 in the UK or equivalent standard worldwide.

© This technical data sheet was written by **PlusFloor**, Carnforth Business Park, Oakwood Way, Carnforth, Lancashire, LA5 9FD. At the time of writing and publication of this document, all information is specified correctly. The company reserves the right to change the specifications of this product at any time without prior notice to third parties.