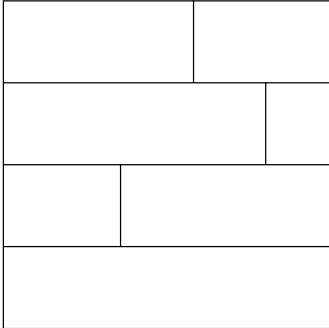


Kaleido

Carpet Plank

Contact
 +44 (0) 1524 481 118
 info@plusfloor.com
 plusfloor.com



Plank
1000 x 333 x 5mm

Nellim
PLF1503

Fjord
PLF1501

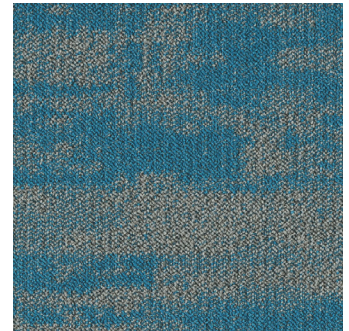
Abisko
PLF1502

Product

Surface Texture	Tufted multi-loop pile	
Pile Fibre	100% Solution Dyed Nylon	
Tile Backing	BaseZero	
Pile Weight	ISO 8543	580 g/m ² (+/- 5%)
Pile Height	3.4-4mm	
Total Thickness	ISO 1765	5.2mm (+/- 5%)
Total Weight	ISO 8543	3000 g/m ² (+/- 7.5%)
Plank Size	1000 x 333 x 5mm	
Planks Per Box	15	5m ² coverage



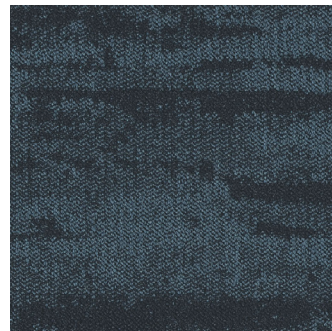
Orkney
PLF1506



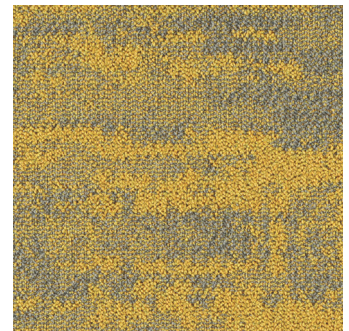
Skye
PLF1512

Technical

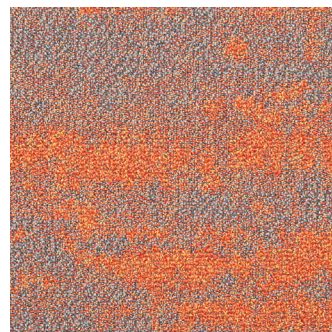
Use Classification	Method EN 1307	Class 33
Castor Chair Test	EN 985	A, Continuous Use
Dimensional Stability	EN 986	Pass
Thermal Isolation	ISO 8302	0.08 m ² K/W
Sound Absorption	ISO 140-8	26 DB
Walk On Test - Static Loading	ISO 6356	< -0.1 kV Antistatic
Reaction to fire	EN ISO 11925-1	BFL-S1
Light Fastness	ISO 105 B02	>5
Warranty	15 Years (Commercial)	



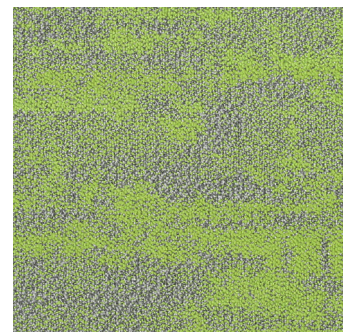
Tromso
PLF1505



Kiruna
PLF1508



Yukon
PLF1510



Luosto
PLF1511

Installation and Warranty

All **PlusFloor** floors must be installed by a competent installer who will have the necessary skills and take individual site circumstances into account. **PlusFloor's** warranty will apply only to floors which have been installed by a competent flooring installer comparable to BS8201 in the UK or equivalent standard worldwide.

© This technical data sheet was written by **PlusFloor**, Carnforth Business Park, Oakwood Way, Carnforth, Lancashire, LA5 9FD. At the time of writing and publication of this document, all information is specified correctly. The company reserves the right to change the specifications of this product at any time without prior notice to third parties.