

PlusFloor®

Vinyl  
Nature's Core



# Nature's Core

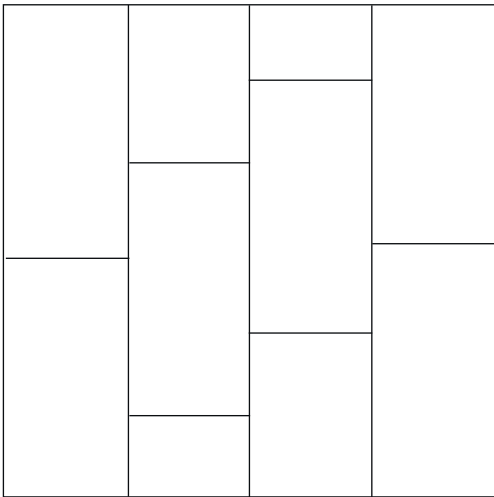
Glue Down Vinyl Tile

Our collection of stone-effect glue-down LVT tiles are perfect for an industrial, interior finish. Finished with stone-effect embossing and a matt film, these tiles look and feel hyper-realistic.

- + Four beautiful stone colours
- + Stone-effect embossing
- + 36 PTV Rating (Wet)



PLF2575 Terrazzo



Panel  
610 x 305 x 2.5mm



Stone effect  
embossing

30

Year  
Residential  
Guarantee

10

Year  
Commercial  
Guarantee

Scan for more  
information or call  
us on **01524 481 118**

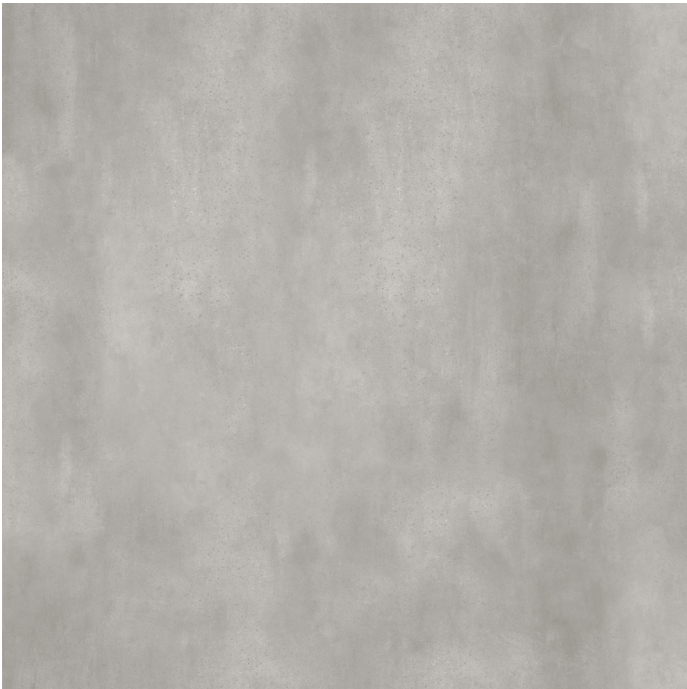




**PLF2575 Terrazzo**



**PLF2576 Silestone**



**PLF2577 Rocksalt**



**PLF2578 Quartzite**



**Terrazzo**



PLF2575

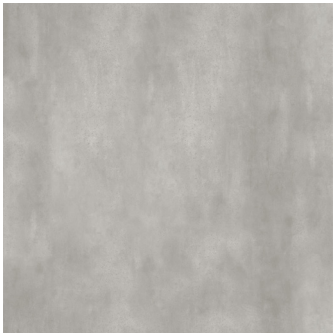
# Silestone



PLF2576



# Rocksalt



PLF2577





**Quartzite**

PLF2578

# Vinyl

## Nature's Core

### Product

Fixing	Glue Down	
Finish	TrueGrain embossing	
Profile	Butt Joint	
Edge	Bevelled	
Wear Layer	0.55mm	
Pack Size	2.973m <sup>2</sup>	16 tiles per box

### Technical

Slip Resistance	36+ PTV (wet)	BS 7976-2 DIN51130
Water Resistance	Resistant	
Stain Resistance	Resistant	EN 423
Scratch Resistance	MSR-A2	EN 16094
Underfloor Heating	Suitable, max. 29°C	
Inflammability	Bfl-S1	EN 13501
Squareness	≤ 0.20mm	
Straightness	≤ 0.30mm	
Residual Indentation	~ 0.03mm	EN ISO 24343-1
Curling	≤ 2mm	EN ISO 23999
Dimensional Stability	≤ 0.15mm%	EN ISO 23999
Thermal Resistance R	0.039m <sup>2</sup> K/W	EN 12667
Formaldehyde Group	E1	EN 717-1:2014
Castor Chair Resistance	Resistant	EN ISO 4918
Light Fastness	≥6	EN ISO 105-B02
Warranty (Years)	30 (Residential)	10 (Commercial)

# PlusFloor®

01524 481 118  
info@plusfloor.com  
plusfloor.com

**London Showroom**  
66a Turnmill Street  
Clerkenwell  
London, EC1M 5RR

**Innovation + Distribution Centre**  
11 Oakwood Way  
Carnforth Business Park  
Carnforth, LA5 9FD