

PlusFloor®

Carpet
City Grounds



City Grounds

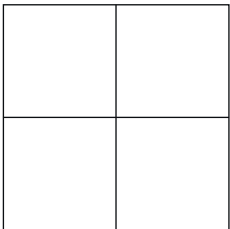
Cushion-backed for extra comfort.

Inspired by pockets of serenity hidden within the energetic communities of central London. City Grounds is a superior quality, plush, tufted carpet tile. It brings comfort and style to a fast-paced, bustling workplace environment.

- + 100% recycled BaseZero backing
- + Multi-level Pattern Loop
- + Superior comfort backing



All colour mix laid in a quarter-turn directional format



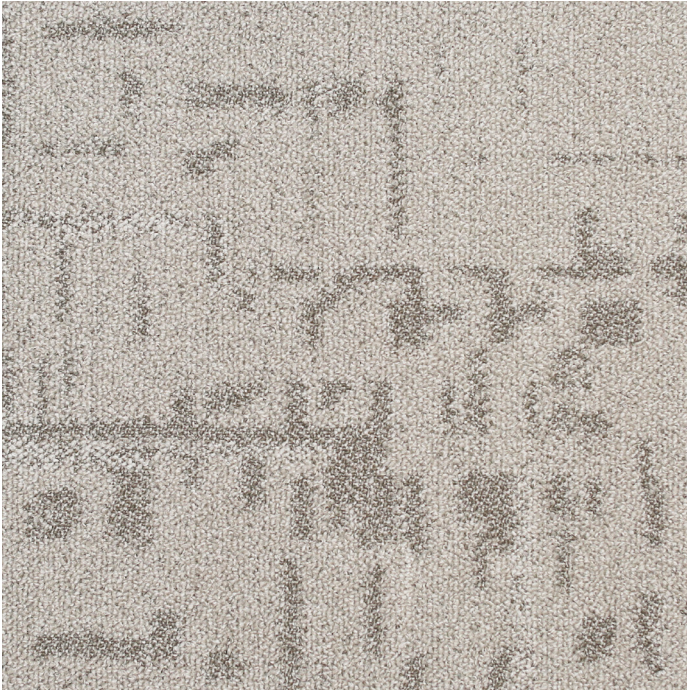
Tile
500 x 500 x 9mm

Our BaseZero carpet tile backing is made from 100% recycled materials and contains zero toxins. It is completely recyclable as part of our LoopBack initiative*.

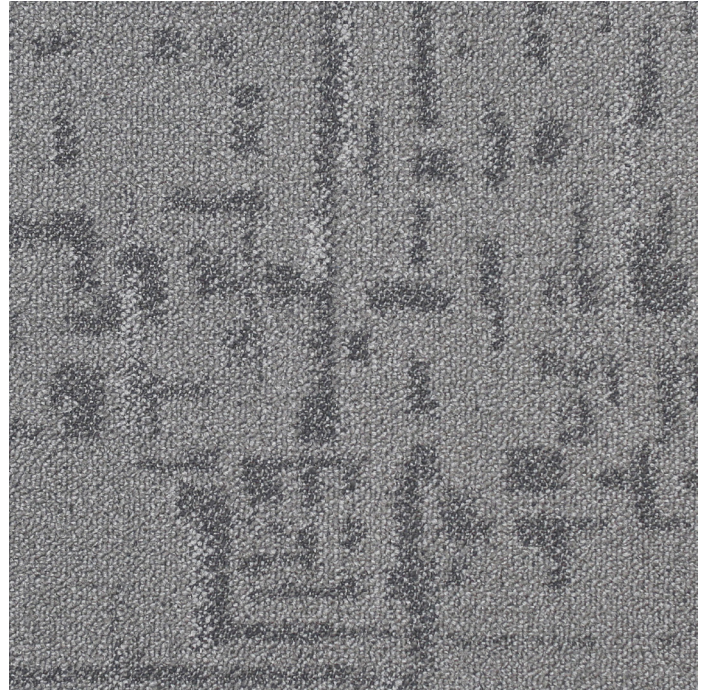


Scan for more information or call us on **01524 481 118**

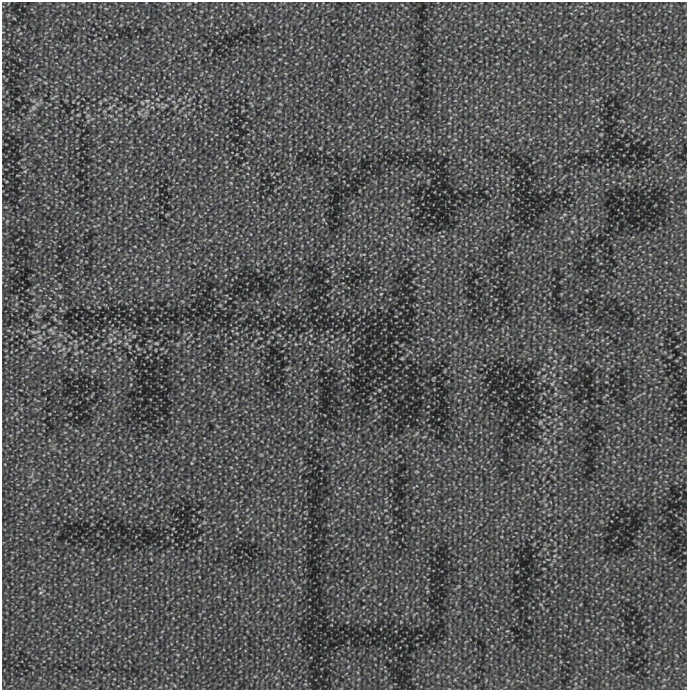




PLF1703 Whitechapel



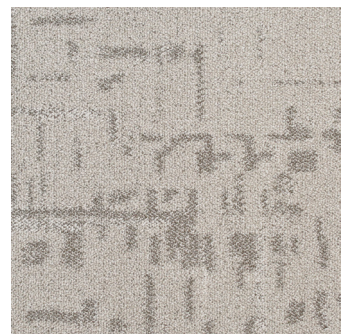
PLF1702 Pimlico



PLF1701 Barbican

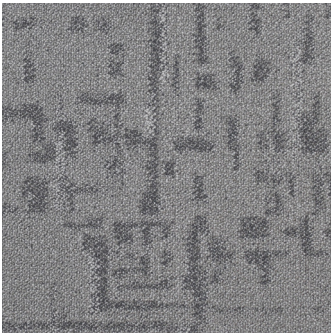


Whitechapel



PLF1703

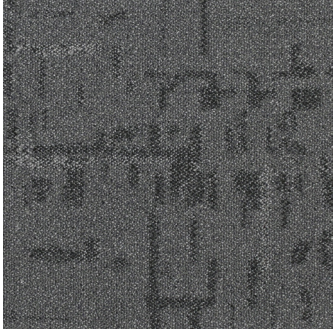
Pimlico



PLF1702



Barbican



PLF1701





All colour mix

Carpet

City Grounds

Product

Surface Texture	Tufted multi-loop pile	
Pile Fibre	100% Solution Dyed Nylon	
Tile Backing	BaseZero	
Pile Weight	ISO 8543	600 g/m ² (+/- 5%)
Pile Height	3.4-3.8mm	
Total Thickness	ISO 1765	9.3mm (+/- 5%)
Total Weight	ISO 8543	3700 g/m ² (+/- 7.5%)
Tile Size	500 x 500 x 9mm	
Tiles Per Box	20	5m ² coverage

Technical

Use Classification	Method EN 1307	Class 33
Castor Chair Test	EN 985	A, Continuous Use
Dimensional Stability	EN 986	Pass
Thermal Isolation	ISO 8302	0.08 m ² K/W
Sound Absorption	ISO 140-8	26 DB
Walk On Test - Static Loading	ISO 6356	< -0.1 kV Antistatic
Reaction to fire	EN ISO 11925-1	BFL-S1
Light Fastness	ISO 105 B02	>5
Warranty	15 Years (Commercial)	

PlusFloor®

01524 481 118
info@plusfloor.com
plusfloor.com

London Showroom
66a Turnmill Street
Clerkenwell
London, EC1M 5RR

Innovation + Distribution Centre
11 Oakwood Way
Carnforth Business Park
Carnforth, LA5 9FD

The warranty covers manufacturing defects and premature wear in the event of normal use.

* Our LoopBack scheme enables carpet tiles to be uplifted from site, cleaned and reused in non-critical locations to extend their useful life.