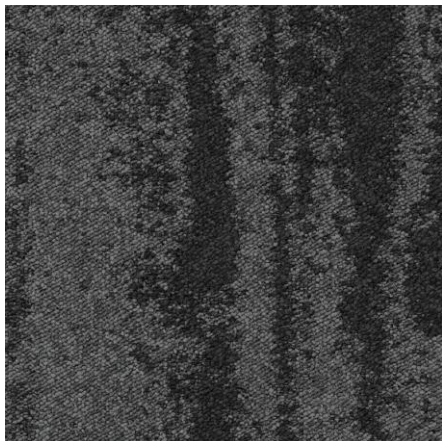


# plusfloor

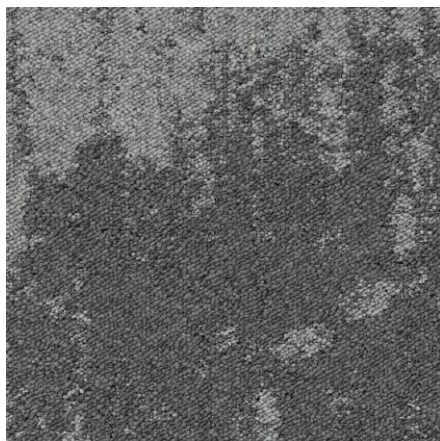
LUONTO

Luonto is Finnish for Nature. We love the texture and design this range portrays; that of natural expression bringing an atmosphere of purity and nature to your floor.

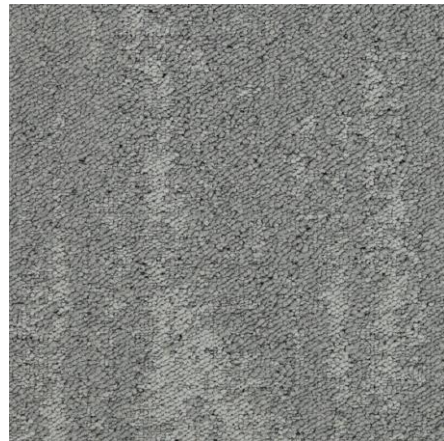
Heavy Contract  
Designer Carpet Tile



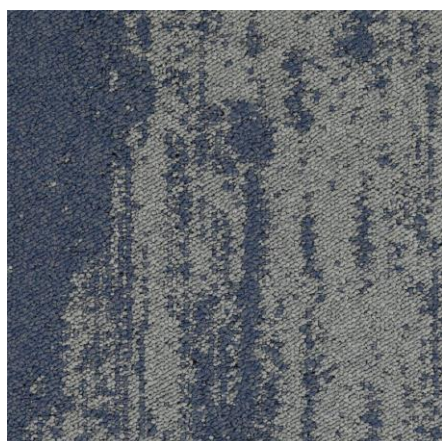
Burnt Trunk



Weathered Bark



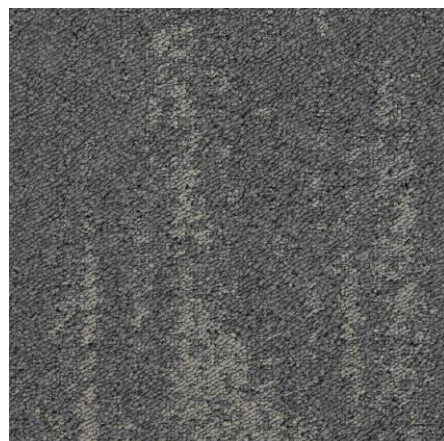
Branch Lichen



Seaside Lichen



Soaked Bark



Forest Floor



Earthy Roots



Loose Clay



Dusty Soil



INSTALL INSPIRATION

# plusfloor LUONTO

Luonto is Finnish for; Nature. We love the texture and design this range portrays; that of natural expression bringing an atmosphere of purity and nature to your floor. We looked at natural elements such as that of weathered barks, lichen and waterscapes to bring this beautiful colour palette together.

- **Heavy Wear** – Luonto has a 10 year commercial wear guarantee and is 810gr/m<sup>2</sup> which is designed to give excellent functionality in heavy wear areas
- **Design & Appearance** – With a colour palette of 9 natural shades giving you the freedom to create a space that can bring the outside in.

## TECHNICAL SPECIFICATION

Product definition		: Tufted- colour placement loop pile
Pile fibre		: 100% polyamide 6 – solution dyed
Pile weight	ISO 8543	: 810 gr/m <sup>2</sup> ± 5%
Total thickness	ISO 1765	: 7.90 mm ± 5%
Total weight	ISO 8543	: 4712 gr/m <sup>2</sup> ± 7,5%
Tile size		: 50 x 50 cm
Tile backing		: Polyflex 70% Recycled
Tiles per box		: 20

## PERFORMANCE

Use classification	Method EN 1307	: 33
Castor chair test	EN 985	: A, continuous use
Dimensional stability	EN 986	: Pass
Luxury/Comfort	EN 1307	: Class 1
Sound Absorption	ISO 140-8	: 24 dB

## ELECTROSTATIC PROPERTIES

Walk on test	ISO 6356	: < 2.0 kV
Static loading		: anti-static

## FLAME PROPERTIES

Reaction to fire	EN ISO 11925-2	
	EN ISO 9239-1	: B <sub>fl</sub> – s1
Hot metal nut test	BS 4790	: Low Radius

## COLOUR FASTNESS PROPERTIES

Light	ISO 105 B02	: > 5
Rubbing, dry	ISO 105 X12	: 4.5
Rubbing, wet	ISO 105 X12	: 5.0
Shampoo	BS 1006	: 4.5
Water	ISO 105 E01	: 4.5



## GENERAL

Recommended maintenance: Best results are obtained when cleaned with a dry shampoo method.

Pile direction: Directional arrows are printed on the back of each tile, can be laid Monolithic or Non-Directional for best effect.

Laying instructions: PLUSFLOOR flooring products are to be installed in full accordance with recommended installation instructions. It is advisable to install using tackifier or spray adhesive.

PLUSFLOOR reserves the right to amend this specification without giving prior notice. For the latest version of the technical specifications email [info@plusfloor.com](mailto:info@plusfloor.com).

Please email [info@plusfloor.com](mailto:info@plusfloor.com) for further product details and sample requests.