



plusfloor

Cloud Space collection delivers an organic appearance with subtle cloudy variation in colour and texture. We have carefully selected neutral colourways to match today's trend of homely aesthetics in commercial spaces.

CLOUD SPACE

Contract
Designer Carpet Tile



CS458



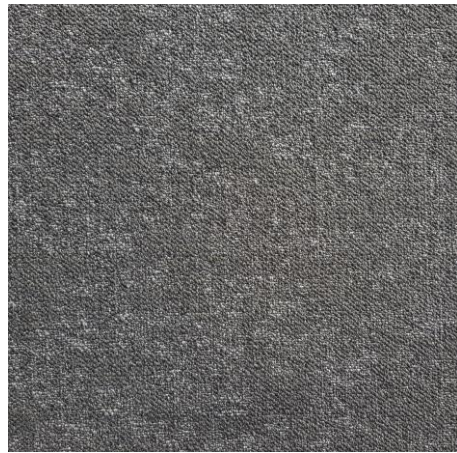
CS457



CS456



CS450



CS452



CS451



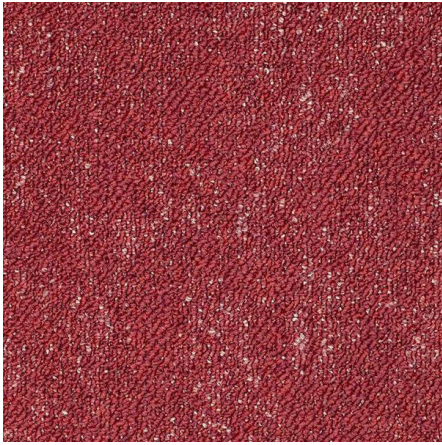
CS454



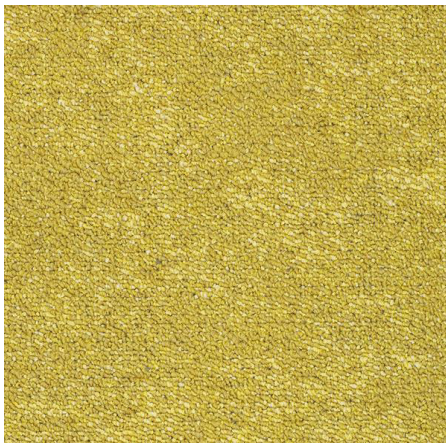
CS455



CS453



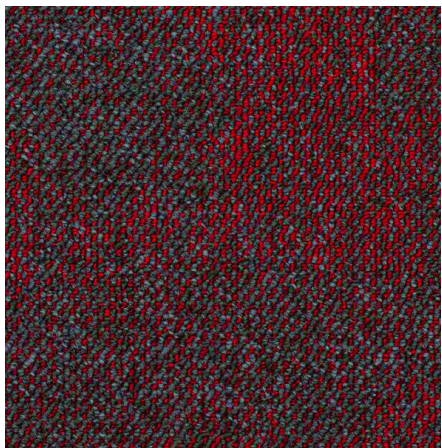
CS459



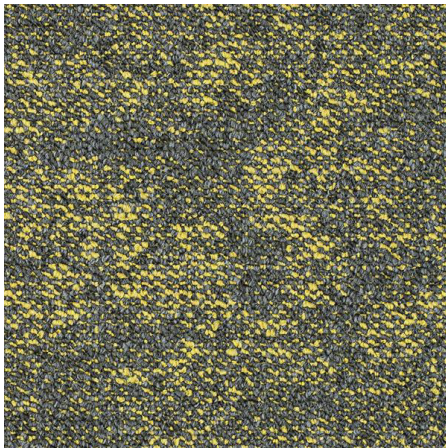
CS461



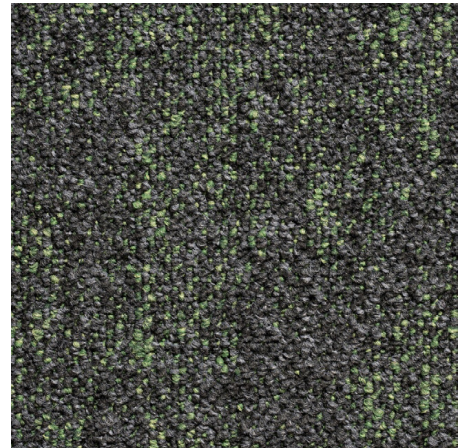
CS460



CS462



CS463



CS464



INSTALL INSPIRATION

plusfloor

CLOUD SPACE

plusfloor CLOUD SPACE

We have carefully created the CLOUD SPACE range with a subtle cloudy design, mixing together yarns in homely colourways which are richly enhanced by its tufted loop texture.

- **Heavy Wear** – has a 10 year commercial wear guarantee and is 740gr/m² which is designed to give excellent functionality in heavy wear areas
- **Design & Appearance** – A subtle cloudy variation in colour and texture, numerous opportunities with 15 neutral colourways to match today's trend of homely aesthetics.

TECHNICAL SPECIFICATION

Product definition		: Tufted loop pile
Pile fibre		: 100% Nylon SDN
Pile weight	ISO 8543	: 740 gr/m ² ± 5%
Total thickness	ISO 1765	: 5 mm ± 5%
Total weight	ISO 8543	: 4200 gr/m ² ± 7,5%
Tile size		: 50 x 50 cm
Tile backing		: Polyflex 70% Recycled
Tiles per box		: 20

PERFORMANCE

Use classification	EN 985	: Class 33
Castor chair test	ISO 8302	: A, continues use
Thermal isolation Dimensional stability	ISO 2551	: 0.08 m ² K/W : Pass

ELECTROSTATIC PROPERTIES

Walk on test	ISO 6356	
Static loading		: -0.1 kV
Sound Absorption	ISO 140-8	: Anti-static : 24dB

FLAME PROPERTIES

Reaction to fire	EN ISO 11925-2 EN ISO 9239-1	
Hot metal nut test	BS 4790	: B _{fl} – s1 : Low Radius

COLOUR FASTNESS PROPERTIES

Light	ISO 105 B02	
Rubbing, dry	ISO 105 X12	: >5
Rubbing, wet	ISO 105 X12	: 5.0
Shampoo	BS 1006	: 5.0
Water	ISO 105 E01	: 5.0 : 4.0

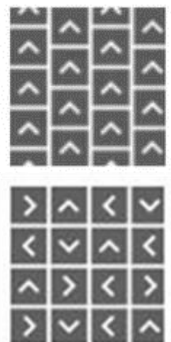
GENERAL

Recommended maintenance: Best results are obtained when cleaned with a dry shampoo method.

Pile direction: Directional arrows are printed on the back of each tile, can be laid Ashlar or Non-Directional for best effect.

Laying instructions: PLUSFLOOR flooring products are to be installed in full accordance with recommended installation instructions. It is advisable to install using tackifier or spray adhesive

PLUSFLOOR reserves the right to amend this specification without giving prior notice. For the latest version of the technical specifications email info@plusfloor.com.



Please email info@plusfloor.com for further product details and sample requests.