



1

Place the U-SHAPED SPACER (PART G) over the preinstalled black screw on the HINGE (PART D). Place the 2 LONG SILVER SCREWS (PART H) into aligned holes on the HINGE. Refer to Fig A.



Fig. A

2

Place the VITAMINI WING (PART A) with the shiny side facing up towards you and screw the U-SHAPED SPACER onto the VITAMINI WING. Refer to Fig B.

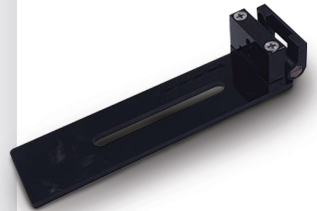


Fig. B

3

Place the ACRYLIC HOLDER (PART B) under the VITAMINI WING. Now thread the 2 THICK PLASTIC SCREWS (PART C) onto the VITAMINI WING.

\*NOTE\* The shorter THICK PLASTIC SCREW closest to the HINGE is used for adjusting the distance of your VITAMINI. Fully tighten when you're happy with your ACRYLIC HOLDER placement. The longer THICK PLASTIC SCREW (furthest from the HINGE) is used to hold the VITAMINI in place.

Refer to Fig C.



Fig. C

4

Repeat steps 1 to 3 with the other VITAMINI ROTATABLE CLIP. Once both are assembled you can now proceed to install on your BLAZE lighting fixture. To do so, push the HINGE of the assembled VITAMINI ROTATABLE CLIP into the outermost fin space on the BLAZE lighting fixture.

\*NOTE\* Push firmly and make sure the HINGE is pushed down all the way.  
Refer to Fig D.



Fig. D



5

Now very carefully slide your VITAMINI fixture in place by facing it to the side and rotating it into position.

Refer to Fig E.

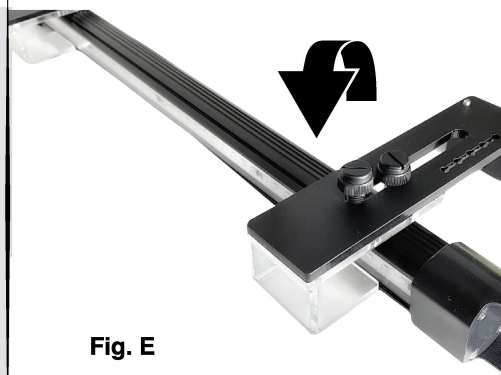


Fig. E

## NOTES AND HANDY HINTS

➔ The additional METAL SCREWS (Part E) and NUTS (Part F) are only needed if you install the ROTATABLE CLIP onto an ILLUMAGIC RAIL MOUNTING SYSTEM (RMS).

➔ Here are some of the versatile mounting options with the VITAMINI ROTATABLE CLIP and the RAIL MOUNTING SYSTEM (RMS)

