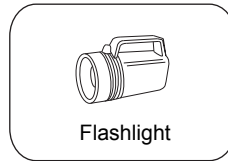
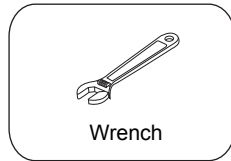
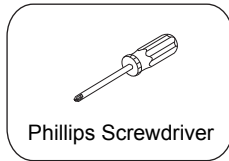
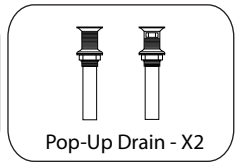
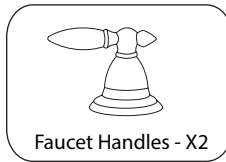
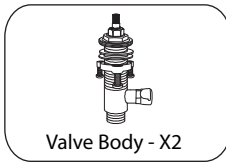
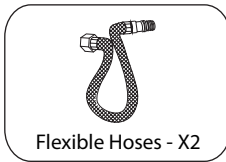
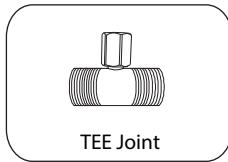
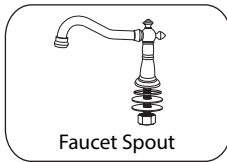


WYNDHAM COLLECTION

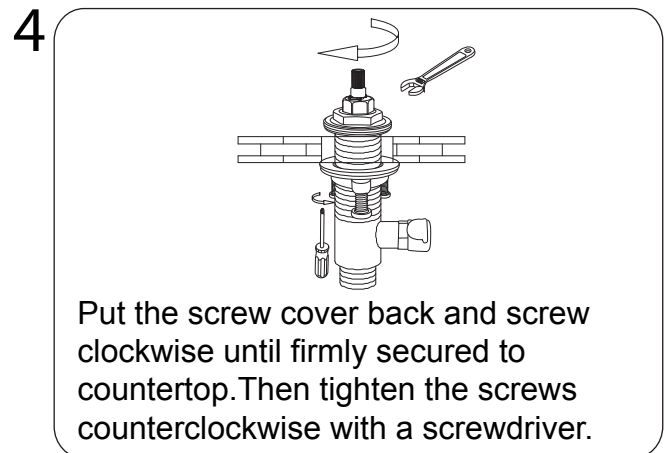
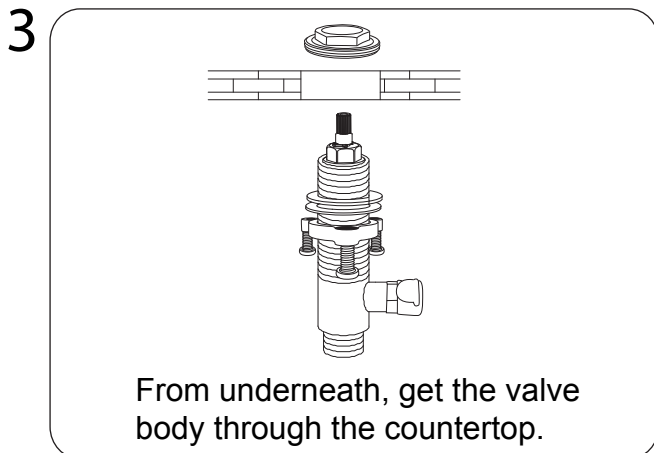
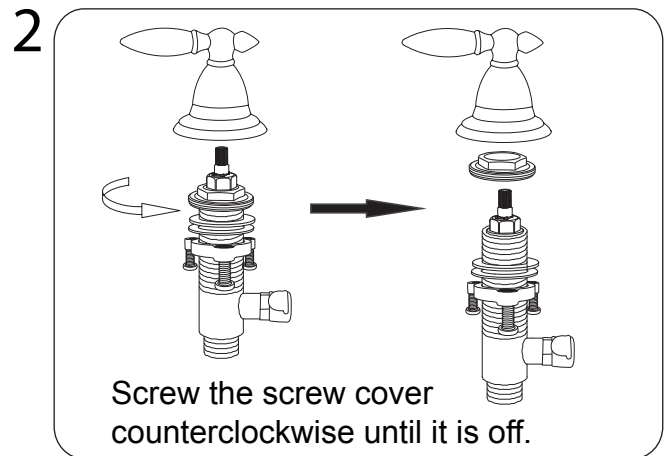
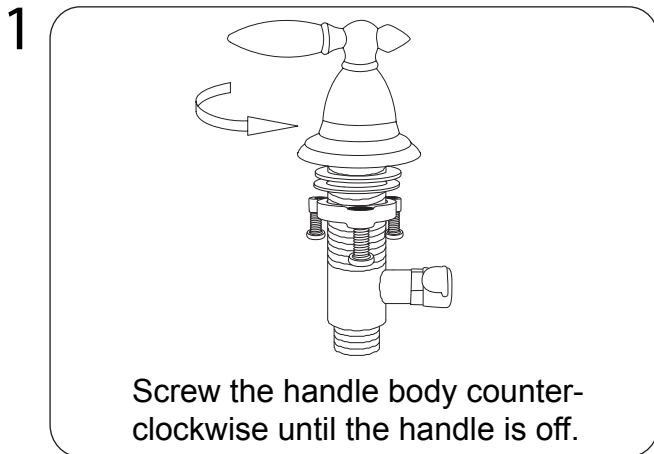
SUGGESTED TOOLS AND MATERIALS



PARTS / HARDWARE INCLUDED



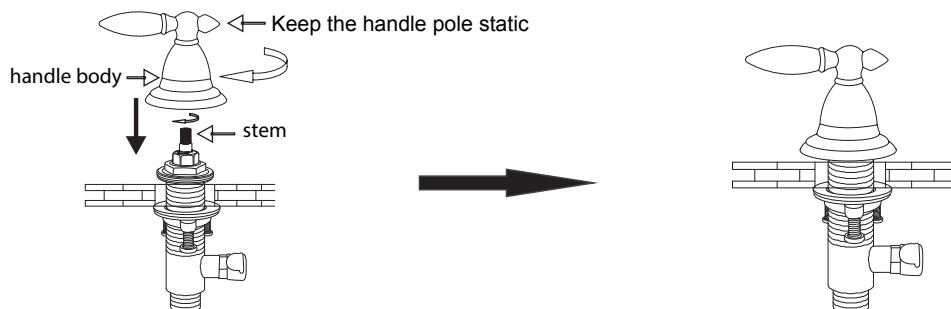
SPLIT HANDLE INSTALLATION



THREE HOLE FAUCET
INSTALLATION GUIDE

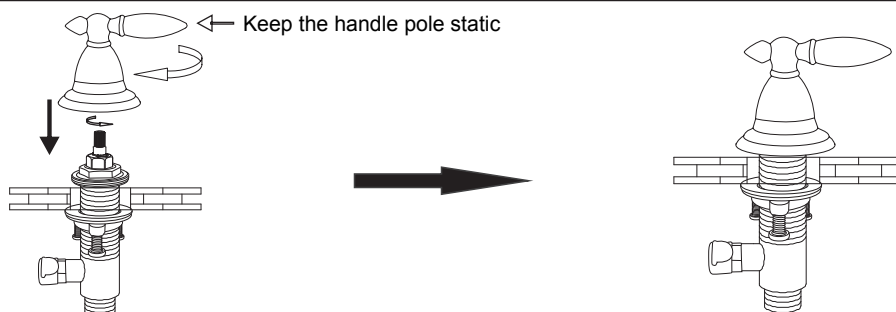
WYNDHAM COLLECTION

5



Screw the stem part (shown in picture) clockwise. Put the left handle in the same direction as the picture, keep the handle pole static, while rotating the handle body clockwise until it is firmly secured.

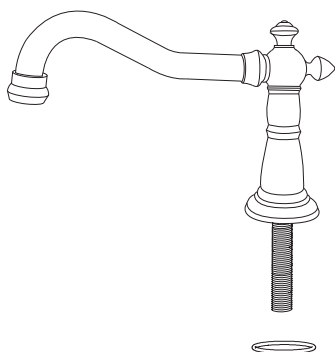
6



Screw the stem part (shown in picture) counterclockwise. Put the right handle in the same direction as the picture, keep the handle pole static, while rotating the handle body clockwise until firmly secured.

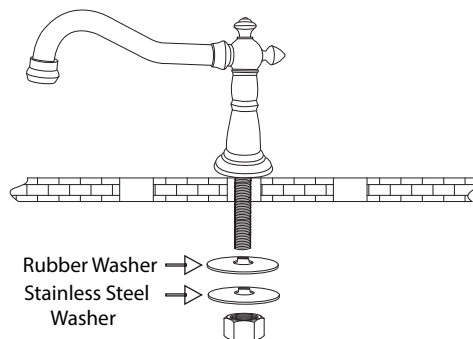
FAUCET INSTALLATION

7



Confirm the O-ring is underneath faucet.

8

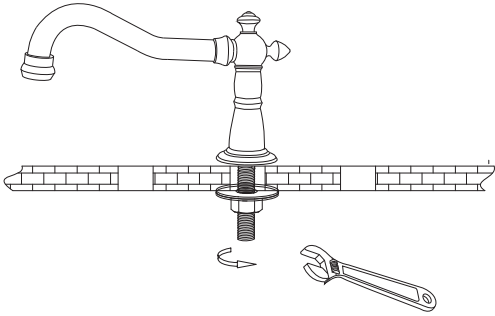


From underneath the countertop, feed the washers and mounting nut.

THREE HOLE FAUCET INSTALLATION GUIDE

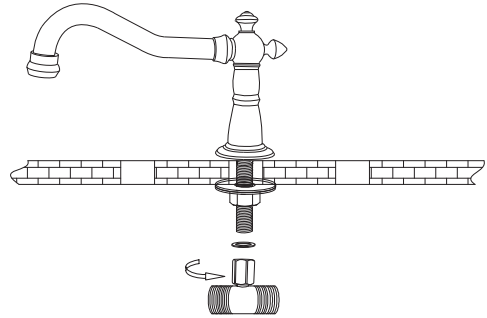
WYNDHAM COLLECTION

9



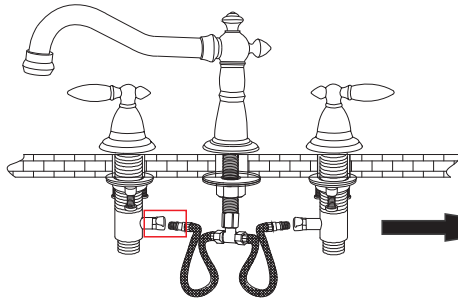
Screw the mounting nut counterclockwise, until the nut is firmly secured.

10

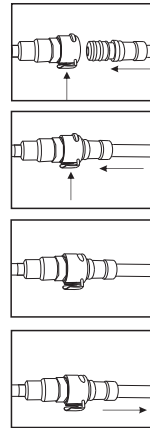
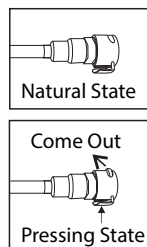


Screw the nut of the TEE joint counterclockwise, until the TEE is firmly secured.

11



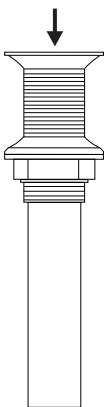
Connect the flexible hoses with the nut side going into the TEE and the other side going into the valve body.



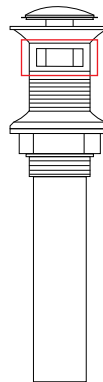
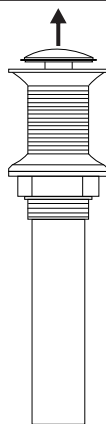
Press the quick connector button in using your fingers. Simultaneously, push in the flexible quick connect hose. Take finger off the connector button and carefully pull the flexible hose, so they snap in together.

ONE TOUCH SPRING ACTION POP-UP DRAIN

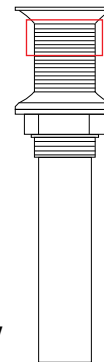
12



Push down on drain center until it clicks open. Push down again for drain to click closed.



Pop up drain is for sinks with an Overflow



Pop up drain is for sinks with no Overflow

THREE HOLE FAUCET INSTALLATION GUIDE