



LEXINGTON-M28-LE

### Features

- Durable poplar wood frame
- Beveled-edge mirror
- Mirror hangs vertically and horizontally
- Wall cleat for easy hanging and leveling

### Colors / Finishes

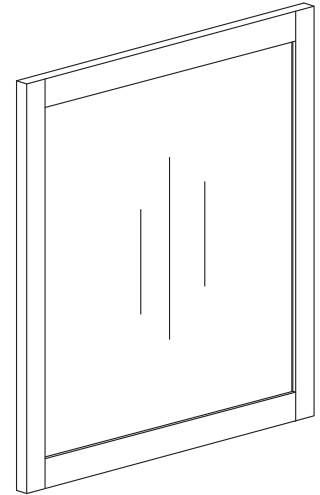
- Light Espresso

### Nominal Dimension

- 28W x 1.2D x 32H (inches)

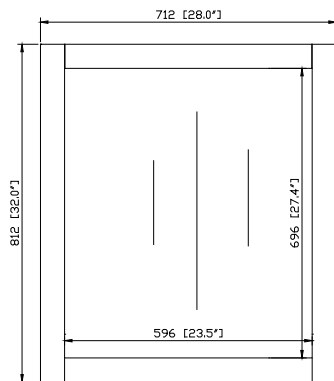
### Components

Vanity	LEXINGTON-V36-LE	LEXINGTON-V48-LE	LEXINGTON-V60-LE
--------	------------------	------------------	------------------

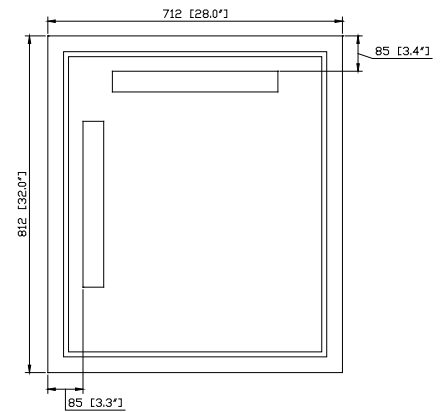


### Product Diagrams

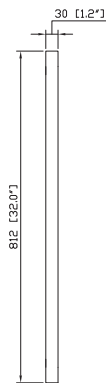
Front



Back



Side



Top

