

Soulcaster!
How to build instructions

Small soulcaster:

Step #1: Take the larger (14 gage wire) and wrap a small loop in the middle of the wire.



Step #2: Add the large acrylic gem.



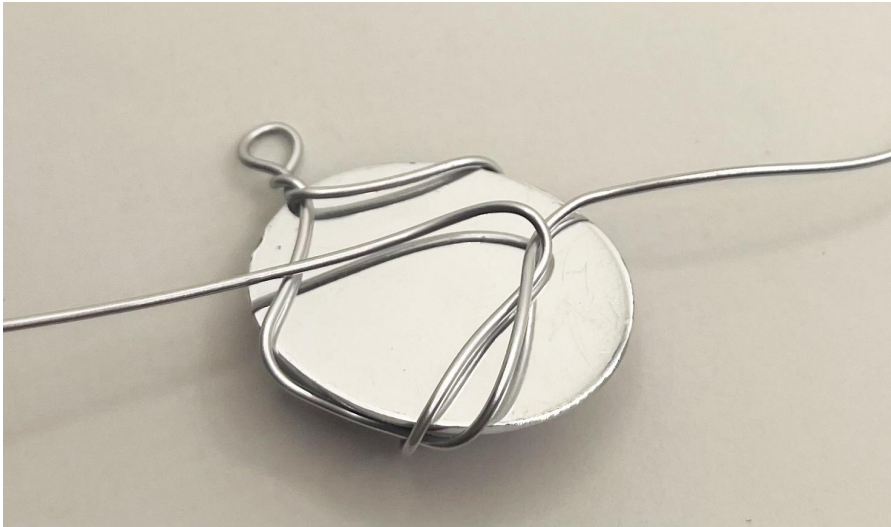
Step #3: Cris-cross the gem in front with the Wire.



Step #4: turn the gem over and wrap the wire in back.



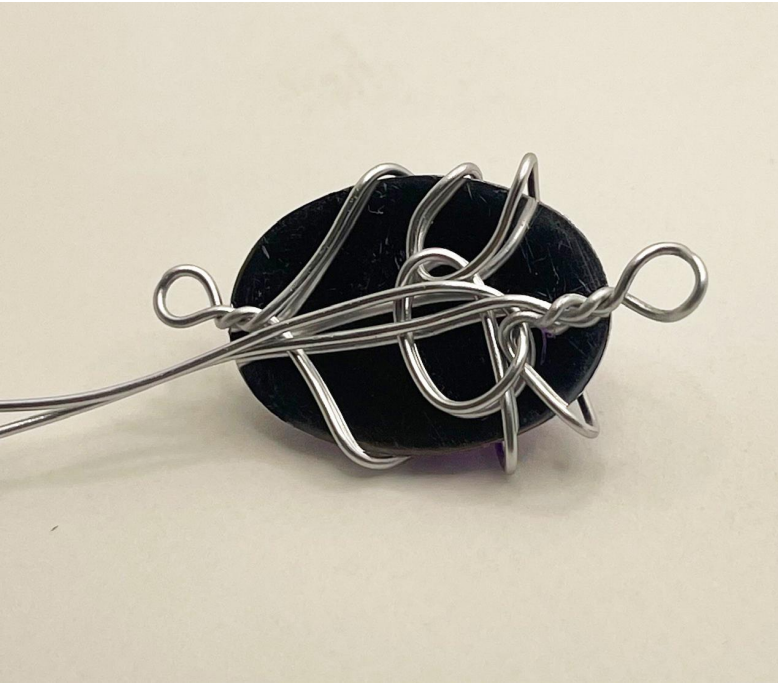
Step #5: Twist the wire.



Step #6: wrap one end around the front again.



Step #7: Use the other side of the wire to create another loop, and twist, so there is a loop on each end.



Step #8: Trim the ends short and glue them down with either E6000 or another comparable Brand. Set aside to dry, while you construct other pieces.



Step #9: lay out the different jewels in the pattern you want.



Step #10: Measure the chain around your index, or other finger. Make sure there is enough room to be able to put it around your finger with ease.



Step #11: Cut the chain.



Step #12: With the needle nose pliers, open a jump ring and use it to attach both ends of the chain to the top of the first gem and close.



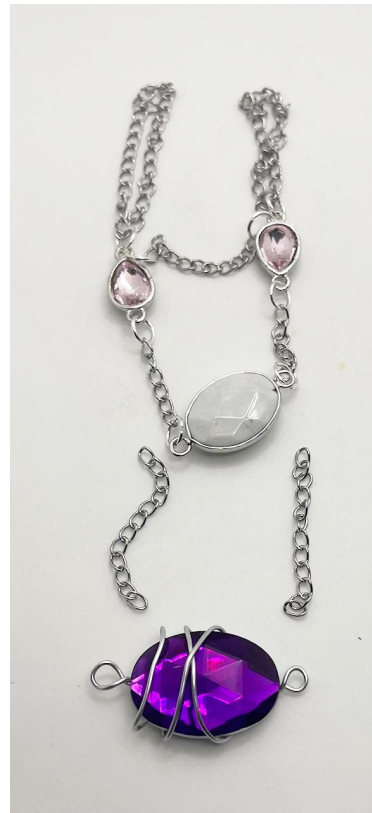
Step #13: Repeat for other gem.



Step #14: Cut chain to fit between the two small gems and attach with jump rings.



Step #15: measure 6-8 links per side
Step #16: measure 12-14 links per side.
Connect the small gems to the larger
Stone with jump rings.



Step #17: Connect the chains
To the large acrylic gem using
jump rings.



Step #18: Attach jump rings to 2 3-1
connector.



Step #19: Attach 3-1 connector on
Each end of the large acrylic gem.



Step #20: using a jump ring attach a
Lobster claw to one 3-1 connector and
A jump ring to the other.



Step #21: Measure 16-18 links and cut 6 pieces.



Step #22: Attach the chain to one end of the 3-1 connector using a jump ring.



Step #23: Repeat step 22 on all 6 ends of the 3-1 connector.



Step #24: line up the chain with the 3-1 connector on gem. Attach the other end of the chain to the connector.



Step #25: Repeat step 24 for all 3 ends of the connector.



Step #25: Repeat the other side.



Step #26: Wear and enjoy!



Large Soulcaster

Step #1: Take the larger (14 gage wire) and wrap a small loop in the middle of the wire.



Step #2: Add the large acrylic gem.



Step #3: Cris-cross the gem in front with the Wire.



Step #4: turn the gem over and wrap the wire in back.



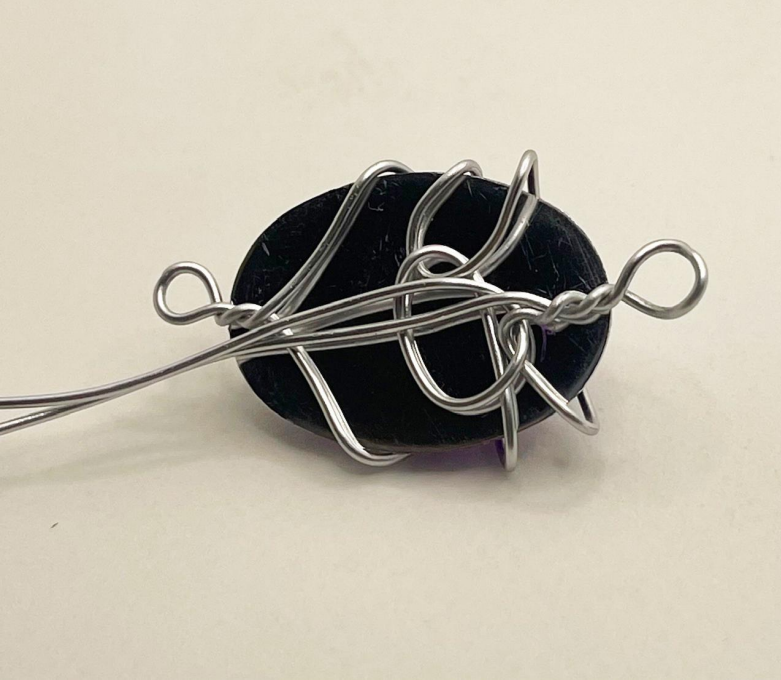
Step #5: Twist the wire.



Step #6: wrap one end around the front again.



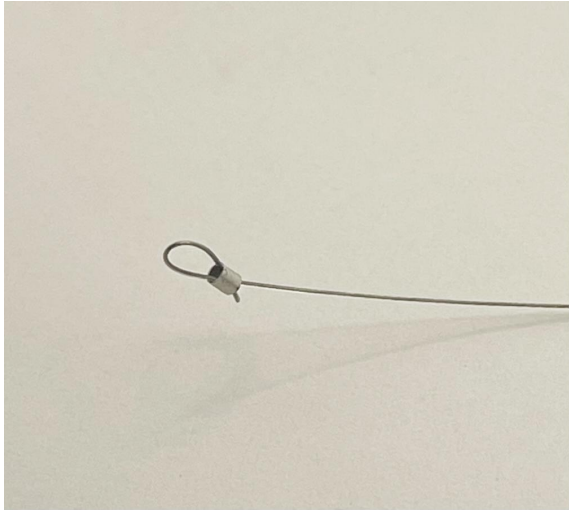
Step #7: Use the other side of the wire to create another loop, and twist, so there is a loop on each end.



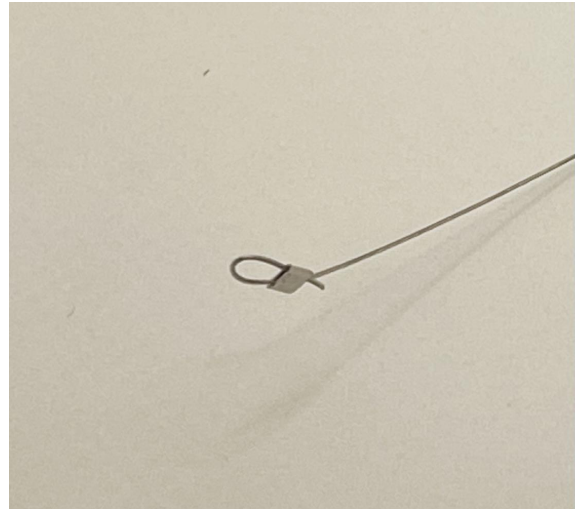
Step #8: Trim the ends short and glue them down with either E6000 or another comparable Brand. Set aside to dry, while you construct other pieces.



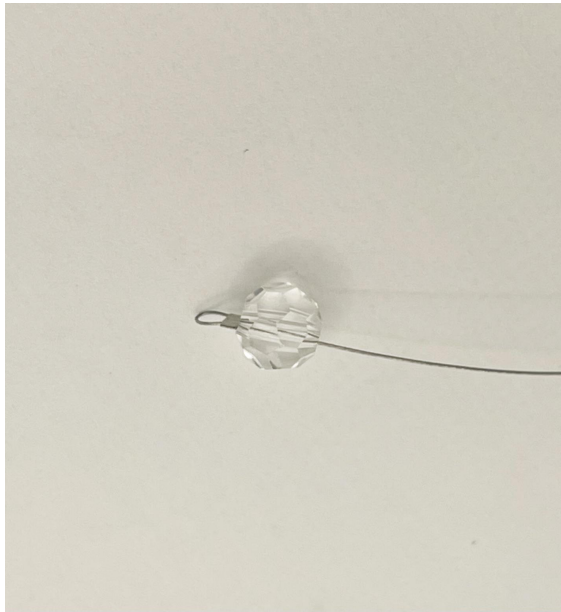
Step #9: Use the 24 gage wire and string it through the crimp bead/tube.



Step #10: using the plier, push down gently and crimp the bead.



Step #11: String the bead.



Step #12: trim wire and add a crimp bead.



Step #13: loop the end through the crimp bead.



Step #14: Crimp the bead gently with pliers.



Step #15: Attach the bead to the 5-1 connector using jump rings.



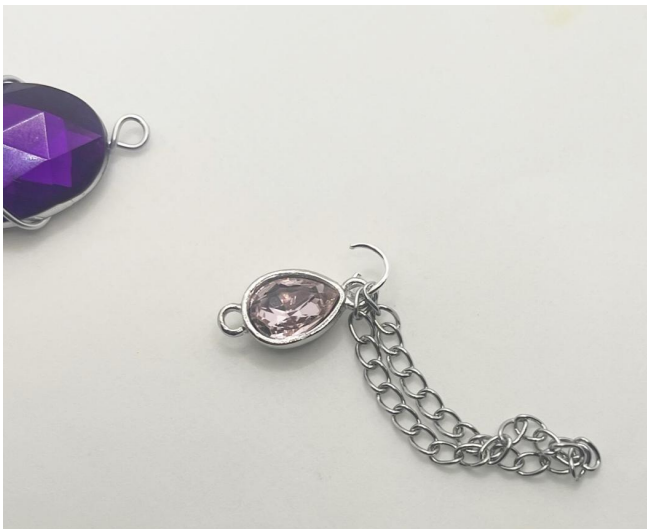
Step #16: lay out the different jewels in the

Step #17: Step #10: Measure the chain pattern you
around fingers, or other finger. Make sure
There is enough room to be able to put it
Around your finger with ease.



Step #18: attach each end of ring loop to top
Of jewel via jump ring.

Step #19: Repeat this process for each
finger.



Step #20: Measure 6-8 links per jewel and attach the bottom end of small jewel to each end of the 5-1 connector via jump rings.



Step #21: Measure 12-14 links of chain
Cut and attach from 5-1 connector to
Large gem via jump rings.



Step #22: Attach jump rings to 2 3-1



Step #23: Attach 3-1 connector on
Each end of the large acrylic gem.



Step #24: using a jump ring attach a lobster claw to one 3-1 connector and a jump ring to the other.



Step #25: Measure 16-18 links and cut 6 pieces.



Step #26: Attach the chain to one end of the 3-1 connector using a jump ring.



Step #27: Repeat step 22 on all 6 ends of the 3-1 connector.



Step #28: line up the chain with the 3-1 connector on gem. Attach the other end of the chain to the connector.



Step #29: Repeat step 24 for all 6 ends of the connector.



Step #30: Enjoy your large Soulcaster.

