



NEWS

Issue 45

November 2023

Vale Lin Bloomfield

It is with great sadness and loss that we have to advise that Lin Bloomfield (our Mum) died on 17 October after some very difficult months with health issues.

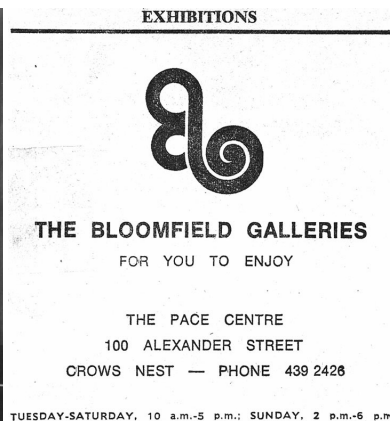
Lin's love of art began with the wonderful collection of Norman Lindsay works from the Howard Hinton collection, many of which lined the halls of Armidale Teacher's College in the 1950s when she studied there. After being posted to the central west NSW town of Trundle, The Swingle Bar gallery was opened with two friends in the late 1960s. From these humble beginnings she moved to Sydney in 1973 and Bloomfield Galleries was established in Crows Nest. In 1974, Odana Editions was launched with the release of the first eleven editions, in three folios, of the Norman Lindsay Facsimile Etchings.

In 1975 the gallery moved to Paddington, first to Gurner Street and from 1977 we had a gorgeous little stone house in Union Street. Finally, in 1980, we moved to the purposely renovated building on the corner of Elizabeth and Sutherland Streets where the gallery remained until the end of 1994. From 1973 to 1988, Lin curated exhibitions every three weeks for the majority of the year of established and emerging artists. Artists included Norman Lindsay, Frank Hinder, Charlie Cooper, Ken Reinhard, Dorrit Black, Keith Looby, Angus Nivison, Ralph Balson, J.J., Bim and Kim Hilder, Jeremy Gordon, Vincent Brown, Bill Pidgeon, J.S. Watkins, Col Jordon, Margery Dennis, Janet Dawson, Lewis Morley, Barry Otto, Virginia Cuppaidge and Hadyn Wilson, among others. Our more unusual exhibitions included *Wild and Witty Wearables*, *Persian Copperware*, *The Pig in Art* and who could forget the Annual World Melting Moment Competition held on 7 August 1982 and judged by the doyen of cooking, Margaret Fulton?

From the beginning of 1993, Lin moved from the day to day operations of the gallery to become a full-time author and to concentrate on her major publication, *The Complete Etchings of Norman Lindsay*, researched with Josef Lebovic and published in 1998. Jane took over the running of the gallery in 1993 and assisted Lin with the research of the etching book. In 2000 the gallery was moved to Bungendore and Rebecca joined the family business.

During the 1980s, Lin served as Chairman of the Australia Commercial Galleries Association and in 1989 she was awarded a Fellowship of the New South Wales Institute of the Arts in recognition of an outstanding contribution to Education and the Arts. In 1999, *The Complete Etchings of Norman Lindsay* was shortlisted for the Douglas Stewart Prize for Non-Fiction as part of the NSW Premier's Literary Awards. In the same year Lin won the Distinguished Book Award from The Society of Women Writers NSW Inc.

Many of you will remember Lin from the Crows Nest days and the various premises we had in Paddington. Those of you who never met Lin will know of her through her books and the values and ethics we have in running the gallery. We have some photos we would like to share with you and in time, these will be added to our website, with others from our archives.



Lin at the opening exhibition on 15 July 1973. This photo was taken by prominent photographer George Young, husband of Rita Young. Rita was Norman Lindsay's most recognised and well known model.

Not probably the best way to start — our first ad in the *Sydney Morning Herald*, in which the logo was printed upside down.

Lin with Rose Lindsay at the Crows Nest gallery during the opening of the *Norman Lindsay: Master Craftsman Etcher/Rose Lindsay: Master Etching Printmaker* exhibition on 26 April 1974.

