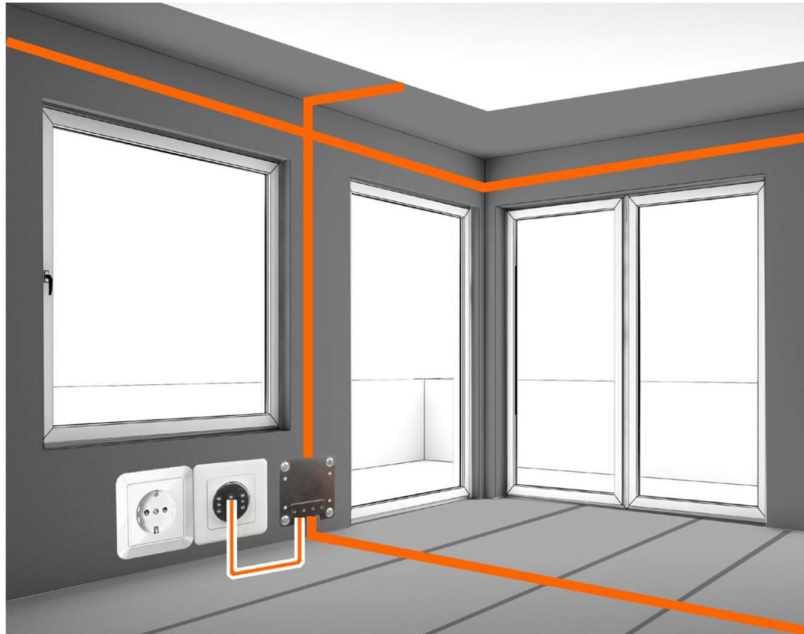


## Shielding paint - instructions

YSHIELD shielding paints block radiofrequency (wireless) radiation and power-frequency electric fields. It is easy to install and can be applied with a brush or roller.

### What you'll need:

1. You can work out the approximate amount of paint you need by dividing the number of square metres to be shielded by 7.5 (for single coat application).
2. Brush, roller and tray, masking tape (to cover edges you don't want painted) and drop sheet.
3. If there are cracks on the wall to be shielded, use grounding strap EB2 to cover them.
4. If painting a large area, such as a whole room, you will need to do one of two things.
  - Either mix one 90 ml container of AF3 fibre additive to a 5L tub of paint and stir thoroughly with an electric mixer
  - **OR** use grounding strap EB2 before painting. Run it from under the grounding plate, across each area to be painted and connect the strips of tape with each other. This is to connect different walls in one room together. It covers cracks in the wall, ensuring that no part is cut off from the grounding.



### Painting tips:

5. Cover surfaces not to be painted carefully to avoid spills.
6. Apply 1 coat of shielding paint evenly over surface to be shielded. Leave 24 hours to dry.
7. If desired, paint a second coat and leave 24 hours to dry.
8. Cover with a sealing coat of normal paint (to prevent colour bleeding through final coat).

9. Paint with desired colour.

## Grounding instructions - internal

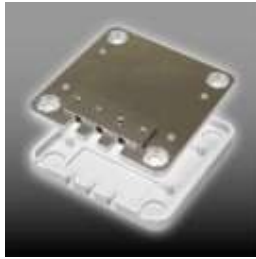
In order to work effectively, your shielding paint needs to be grounded to the wiring inside your house by an electrician. The easiest place for the electrician to do this is at a powerpoint.

The grounding should be installed before finishing the painting job.

### What you'll need:

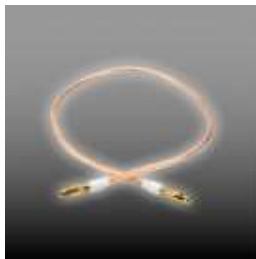
We recommend you consult your electrician about your requirements for grounding.

1. Work out how many grounding points you will need.
  - You will need a grounding connection for each series of connected surfaces eg two or three adjoining walls. If you're two painting walls that aren't physically connected to each other, you'll need to ground each one separately.
2. Select your equipment for grounding at the first location.
  - You will need a Grounding Plate Wall (GW) – suitable for locating on a wall next to a powerpoint. It comes with the plugs and the screws you'll need to attach the plate to the wall.



GW

- You will need a grounding cable to connect the plate to the wiring at the powerpoint. Our grounding cable is 20 cm in length and looks like this:



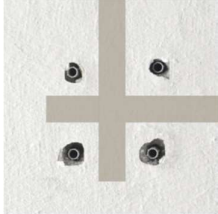
- If there isn't a powerpoint on or near the wall that you are shielding, you will need to paint a strip of paint that extends to the nearest powerpoint.

## How to install grounding inside a building:

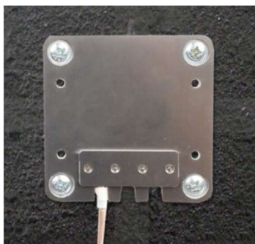
The grounding should be installed by a licensed electrician.

Make sure grounding is installed directly over the shielding paint and before overpainting with regular paint.

1. If you use the grounding tape (EB2), place it on the wall under the grounding plate as shown:



2. Paint the wall to be grounded with shielding paint, with the desired number of coats. (If you're not sure how many, use our wireless meter to measure.)
3. After painting, locate the grounding plate as close to a power point as possible.
4. Drill four 6mm holes in the wall to match the holes in the grounding plate. Make sure that the drill does not come into contact with electrical cables.
5. When the paint is dry, screw the grounding plate (GW or GB) onto the wall.
6. Attach the plugs to the grounding plate



7. Attach one end of the grounding cable to the grounding plate and the other end to the earth wiring at the power point.
8. Clip the cover on to the ground plate.

Now your grounding is complete and you can paint a sealing coat and your desired colour.