

INSTALLATION MANUAL FOR MCU RYZEN

The tools you will need for the installation



Auto Panel Removal Tool



E10 TORX Socket



Torx Bit Socket T20



Pocket-Clip Screwdriver



Ratchet or impact driver

To help you with the installation, here's a video which explains step by step how to install the product in your car:



Step 1 - Remove the glove box



1. Remove the instrument panel end cap



2. Lift the upper decor trim



3. Remove the upper trim of the A pillar



4. Release the topmost clip on the LH lower A-pillar trim (You can use the Poket-clip screwdriver to help you)



5. Pull the rearmost part of the LH lower lar trim upward to release the clips and tabs, and then pull the entire trim rearward to remove the trim from the vehicle



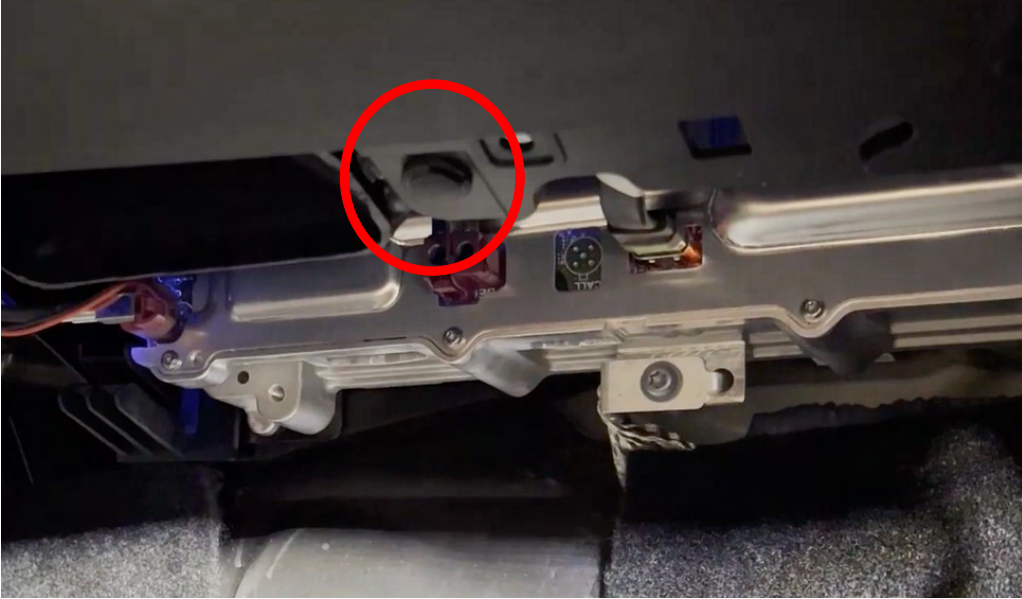
6. Use a Torx T20 socket to unscrew the 4 upper screws that holds the glove box



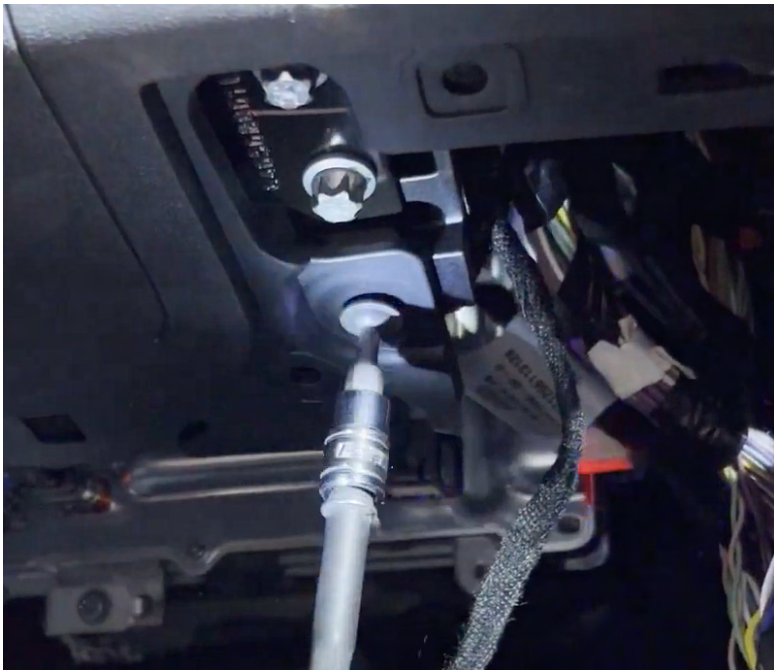
7. Release the clips that attach the passenger footwell cover to the vehicle (see video at 1:35)



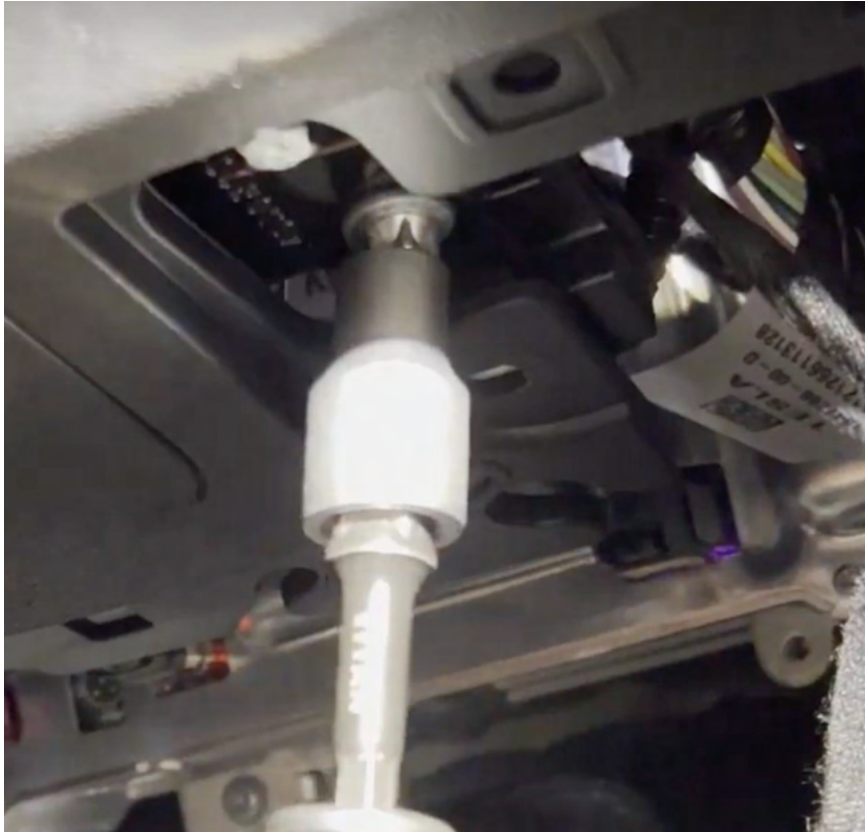
8. Disconnect the electrical wiring harness connectors from the puddle light and emergency speaker



9. Release the clip that attach the vent duct



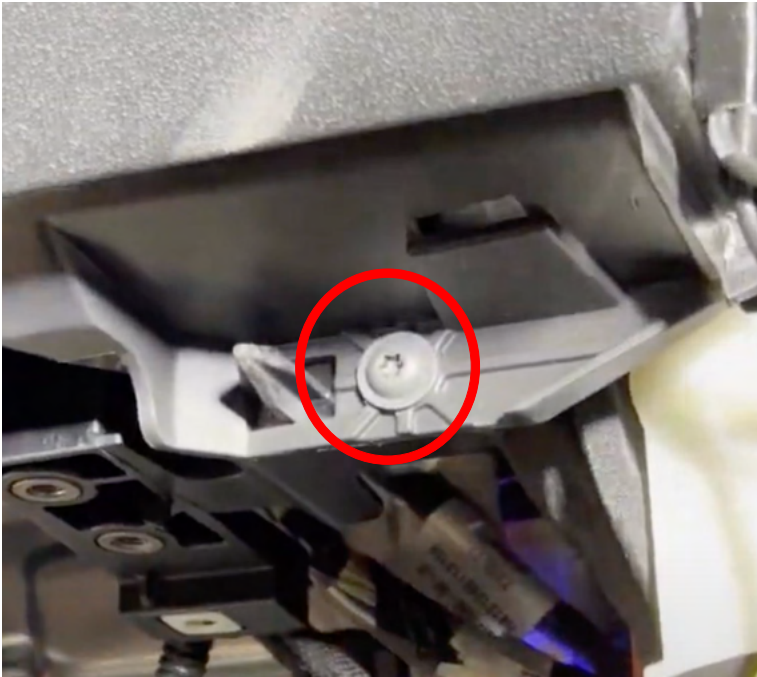
10. Use a Torx T20 socket to unscrew the screws (X2) that attach the front passenger knee airbag to the instrument panel



11. While supporting the front passenger knee airbag, use a external Torx E10 to remove the bolts (X4) that attach the front passenger knee airbag to the instrument panel



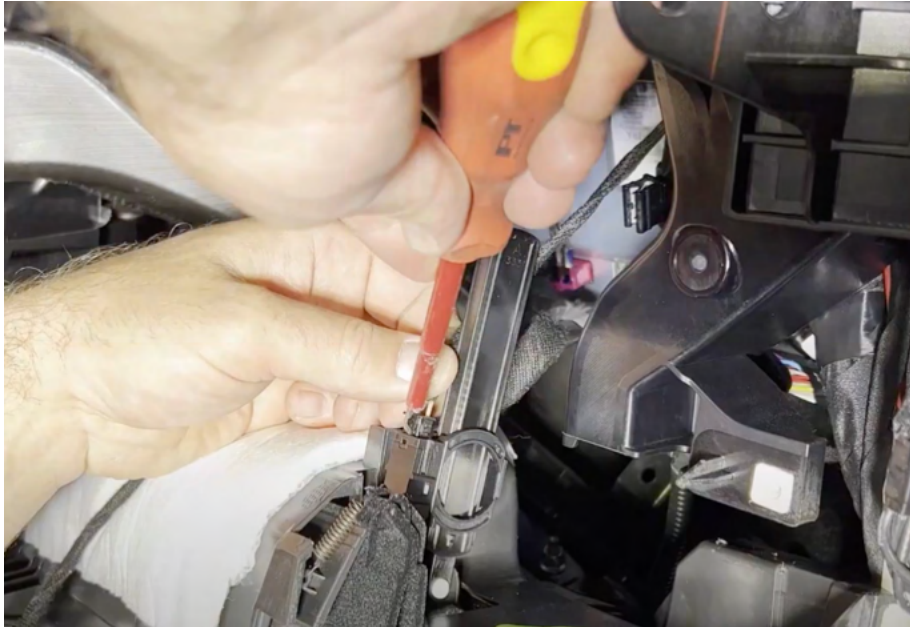
12. Gently pull towards you to unclip the plastic (video 2:35) **Do NOT disconnect the airbag.**



13. Use a Torx T20 socket to unscrew the screws (X2) that hold the glove box



14. Gently pull towards you to unclip the glove box



15. Unplug the 3 connectors that are connected to the glove box. You can unplug the USB plug directly to the MCU (You can use the Poket-clip screwdriver to help you)

Step 2 - Plug the module into the vehicle



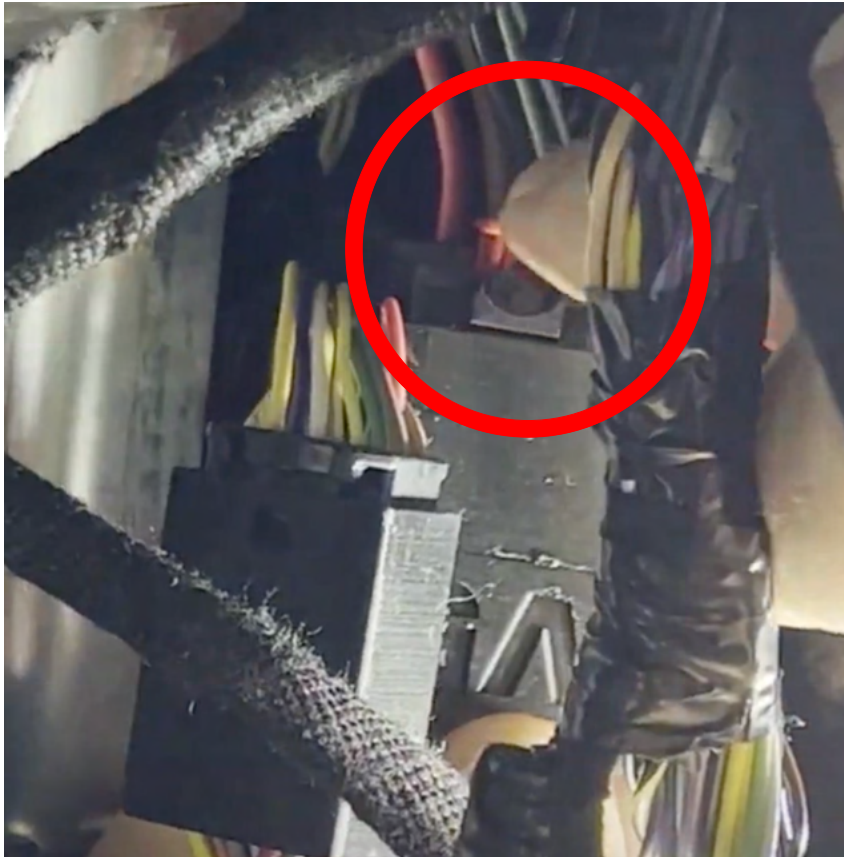
16. Unplug the connector X175 from the MCU (You can use the Poket-clip screwdriver to help you)
See video at 3:46



17. Unplug the connector X170 from the MCU (You can use the Poket-clip screwdriver to help you)



18. You can connect the 2 connectors of the vehicle to the female connectors of the Ingenext module



19. Push the red lock to lock the connector in place

20. You can now plug the connector X170 and X175 of the Ingenext module in the MCU

Tip: To reconnect these 2 connectors, we suggest you replace some of the vehicle harnesses to make some space.

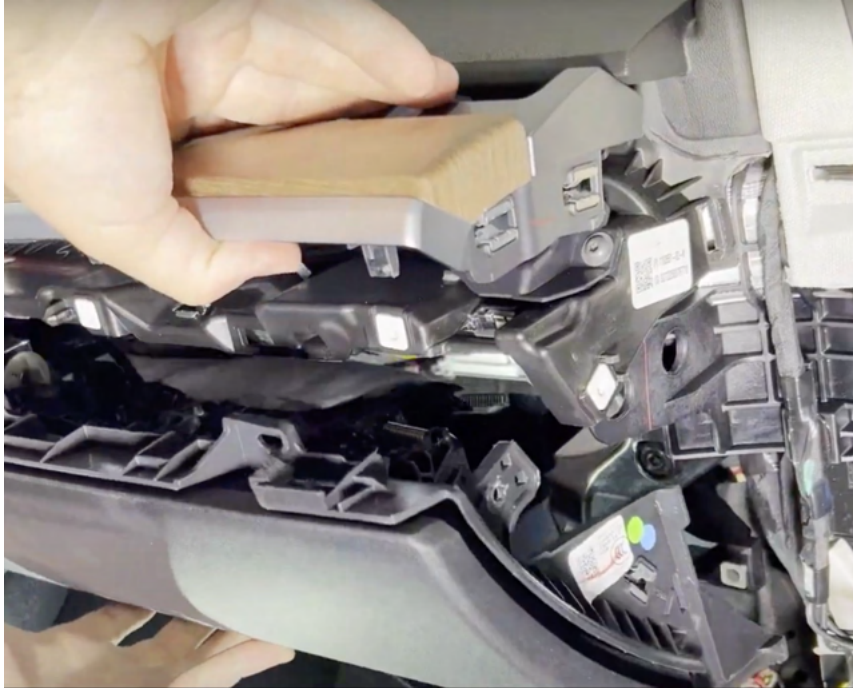
21. Before reassembling the dashboard, wait 2 minutes for the central screen to come back on and turn on the car to put it in DRIVE and check that there is no alert.

Connect to the Ingenext web application and activate the hard reset button. If everything is ok, you can reassemble the dashboard

See the [user manual](#) to help you connect

STEP – 3 Reassembling the glove box

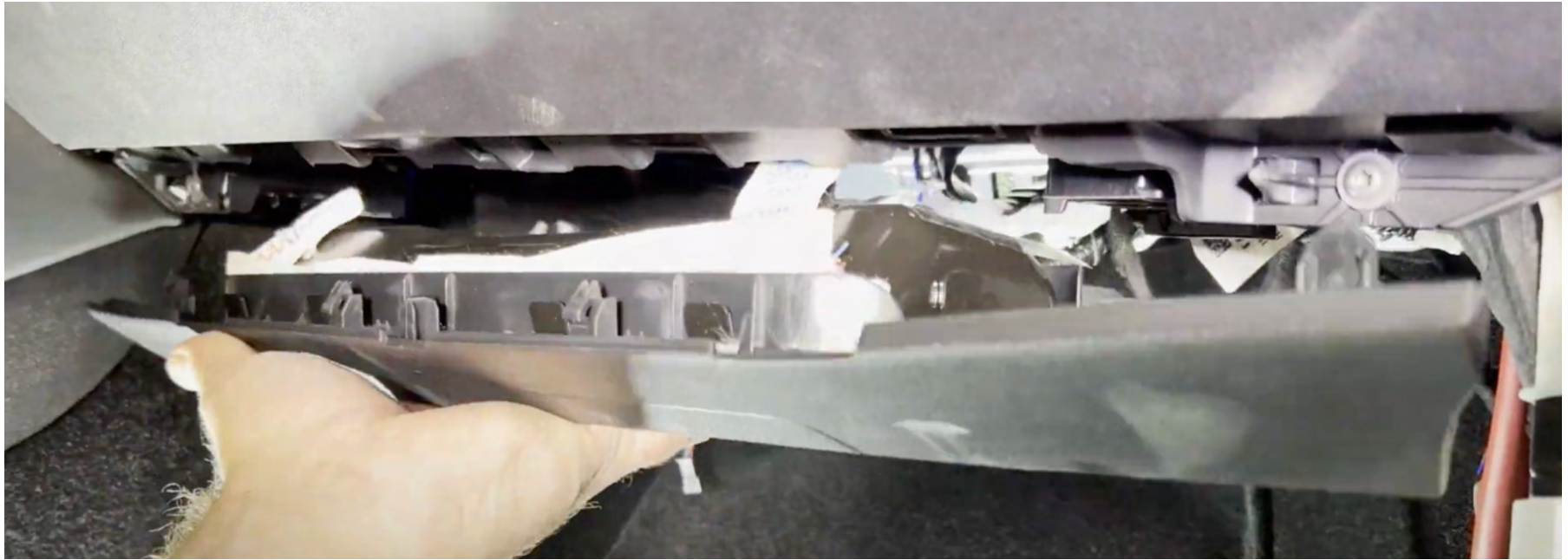
22. Reconnect the 3 connectors of the glove box and the USB



23. Align the top and bottom guides to push the glove box into place



24. Use a Torx T20 socket to screw (X2) that hold the glove box



25. Align the guides to push the airbag into place



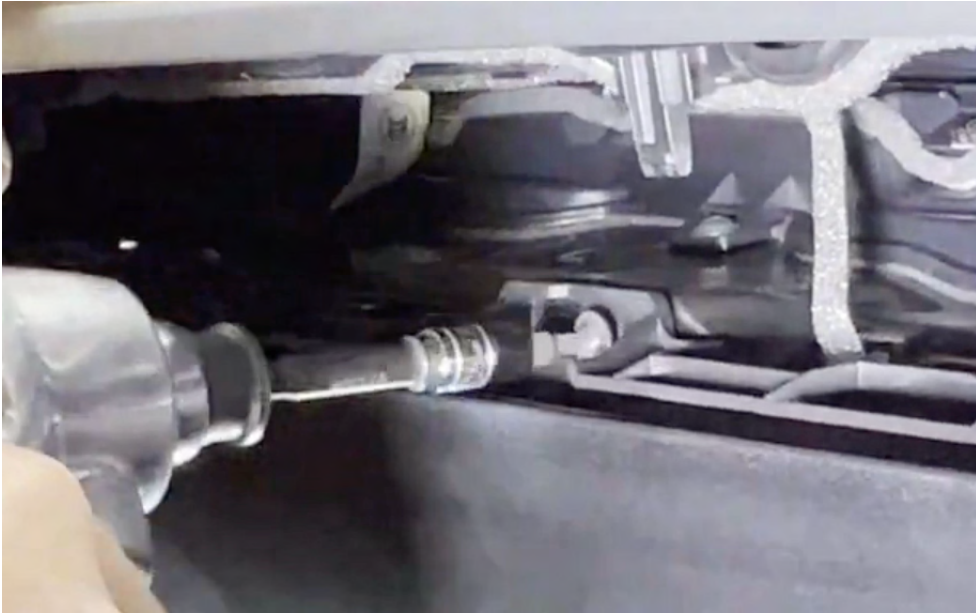
26. Use an external Torx E10 to screw bolts (X4) that attach the front passenger knee airbag to the instrument panel



27. Use a Torx T20 socket to screw in the screws (X2) that attach the front passenger knee airbag to the instrument panel



28. Reinstall the plastic clip that holds the vent duct



29. Use a Torx T20 socket to screw the 4 upper screws that hold the glove box



30. Reconnect the light wire to the panel. You will hear a click sound and the light will come back once properly plugged in



31. Reconnect the emergency speaker



32. Place the 2 modules above the airbag plastic



33. Install the plastic cover on the passenger footwell aligning the guides and reinstall the clips that attach the passenger footwell cover to the vehicle



34. Reinstall the LH lower lar trim and align the clips that insert into the body



35. Replace the rubber lip over the plastic



36. Reinstall the topmost clip on the LH lower A-pillar trim



37. Reinstall the upper trim of the A Pillar



38. Reinstall the upper décor trim



39. Reinstall the instrument panel end cap and...GOOD JOB...you have completed the installation. **You can do a hard reset with Ingenext web app and go have fun!**

**** By connecting the 2 bypass supplied with the product in replacement of the 2 Ingenext modules, your vehicle will be back to stock ****