

INGENEXT

EXTEND THE POWER

USER MANUAL

BOOST LFP



VERSION 2.3.1 - 2023

TABLE OF CONTENTS

Connection **P.1-4**

Drift mode **P.5-6**

WiFi AP control **P.7-8**

Regen control **P.9**

Hard reset **P.10**

Reset WiFi AP password **P.11**

Tesla updates **P.12**

YOUR MODULE IS PROGRAMMED WITH PRESET SETTINGS. YOU CAN CHANGE THEM ACCORDING TO YOUR PREFERENCES. PAY SPECIAL ATTENTION TO THE CHANGES YOU WILL MAKE, THEY COULD AFFECT THE PERFORMANCE OF SOME FEATURES.

CONNECTION

After installing the module in your car:

- 1** Find the Ingenext WiFi access point on your smartphone, tablet or laptop. The name of the access point (AP) will be "BoostLFP_XXXXXX" , with the last portion being the unique serial number for each module.
- 2 Log in with the following password: ingenext**
- 3** On IOS devices , a captive screen will appear (the same type when you log into an hotel AP). Then click on the "Cancel" button and click on "Use without Internet " option at the bottom. You also need to make sure that you are not connected to a VPN. [See figure 1](#)
- 4** Open a new web browser page and type 192.168.0.1 in the address bar. A window will ask you to change the default AP password. You then need to choose a personal password with a combination of letters and numbers with at least 8 characters. [See figure 2](#)

CONNECTION

5 After changing the password, you will be disconnected from the active WIFI AP connection from the module. You then need to reconnect to the WIFI AP with your new password and return to the web browser window. We recommend using the “Forget this network” option to make adding the new password easier. [See figure 3](#)

6 We also recommend that you deactivate the "Auto-join" feature for the Ingenext AP in the WIFI settings of your wireless device. [See figure 4](#)

On some Android devices you might need to turn off the cellular data function in order to be able to access the Ingenext app web page.

CONNEXION

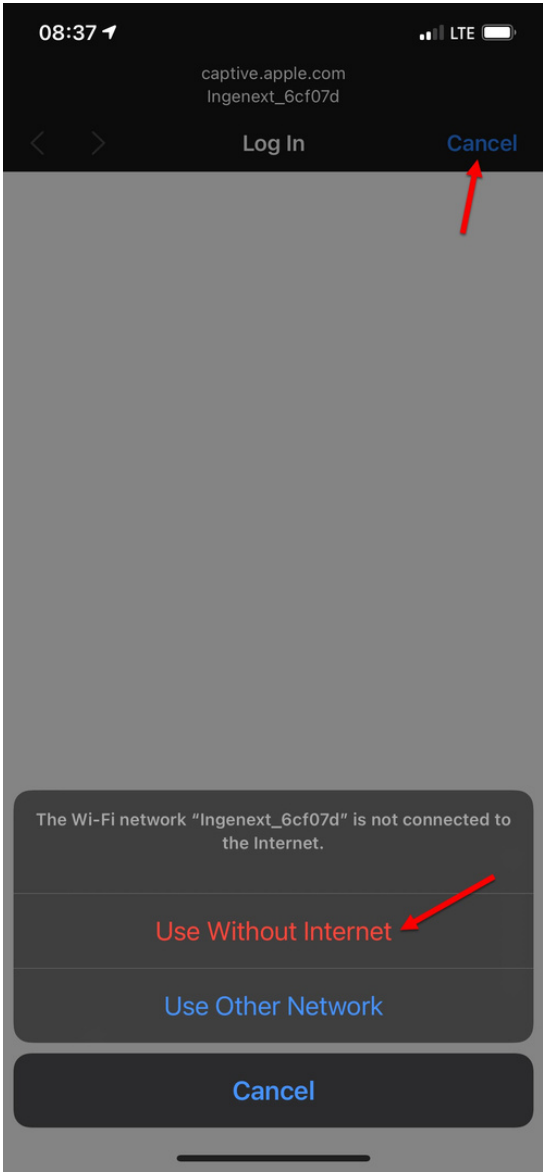


Figure 1

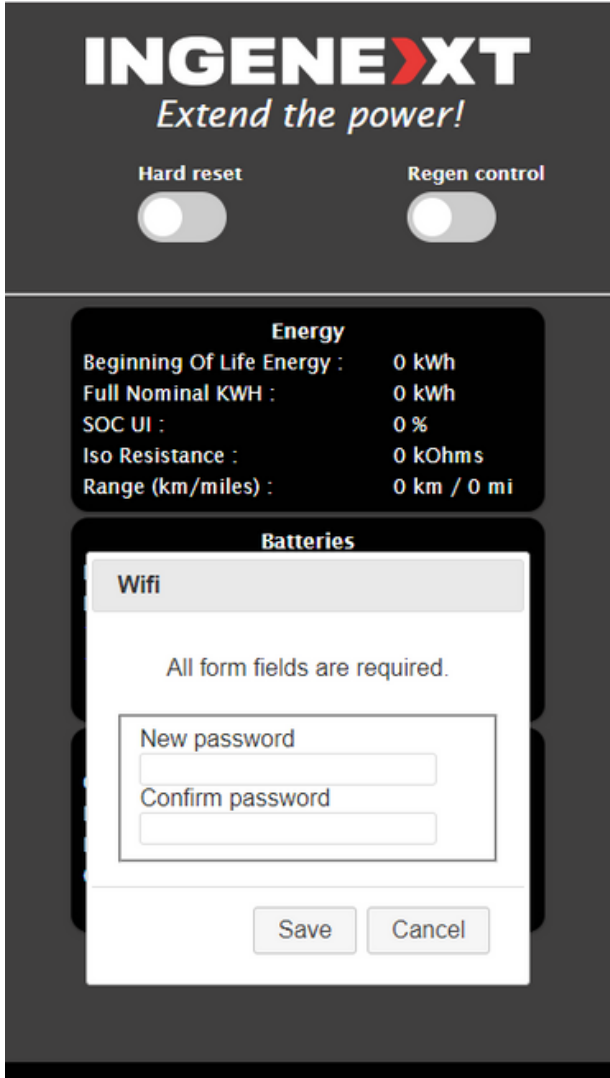


Figure 2

CONNEXION

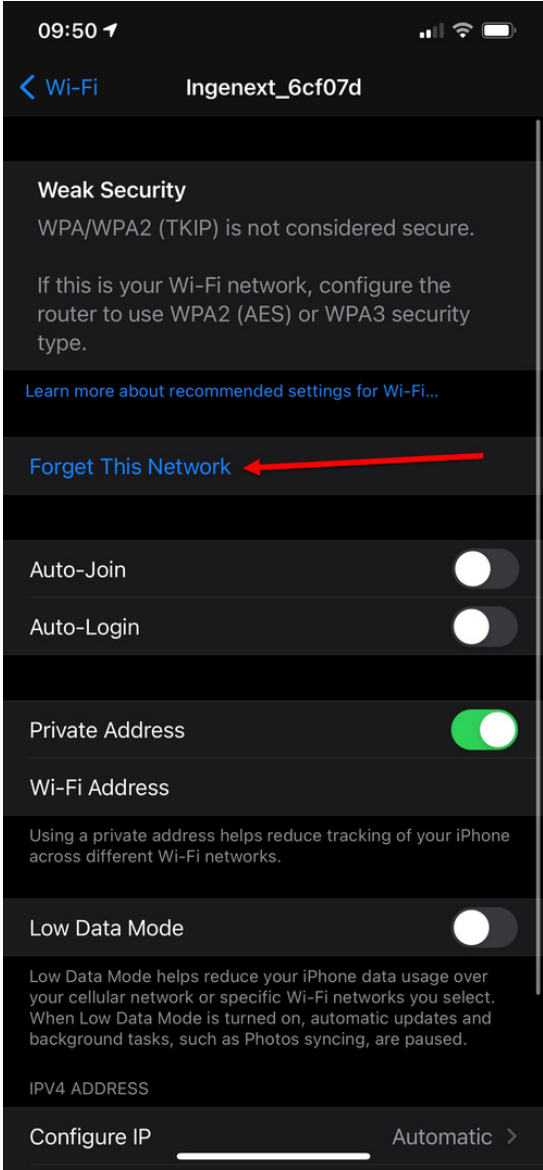


Figure 3

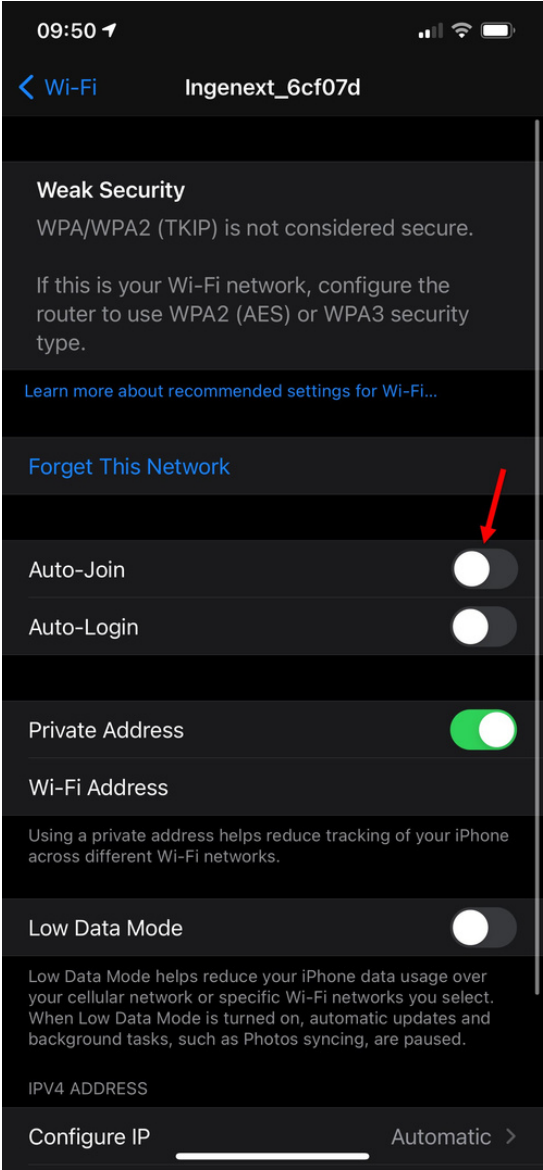


Figure 4

DRIFT MODE

You can only activate it when the car is in Park. The drift mode deactivate all the following driving aids :

- Automatic emergency braking
- Regenerative braking
- Stability control system.
- Traction control system.

➤ To activate the Drift Mode, you must first enable it in the Ingenext app. See figure 5. Then you must restart the car by going in the Safety & Security menu and click on the POWER OFF button. [See figure 5](#)

➤ The center display in the car will go off. Wait 5 seconds and depress the brake pedal to restart the car. Once the car is restarted , the center display should show a telltale of a yellow car drifting and multiple alarm message related to the driving aids being turned off should be shown . [See Figure 6](#)

To deactivate the Drift Mode, you must:

- • Turn off the feature in the Ingenext app
- Restart your car and wait 5 seconds
- Press the brake pedal to restart the vehicle

DRIFT MODE

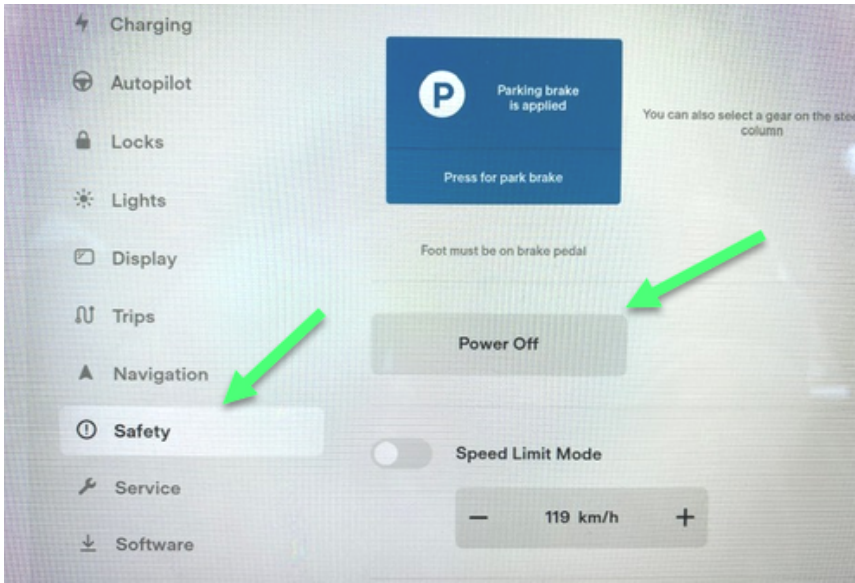


Figure 5

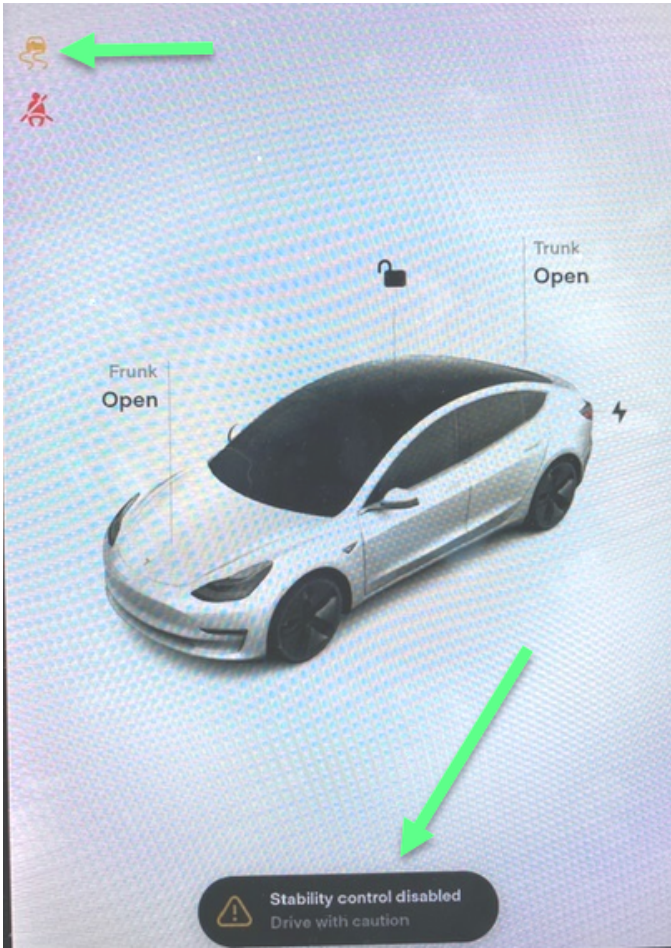


Figure 6

WIFI AP CONTROL

➤ This function is used to turn on or off the Ingenext WIFI AP function.

- 1** While in Park, in the center display of the car, you need to first turn off the Windows Locked button. Then switch the center display WIFI interface from ON to the OFF position. **See Picture 20 and 21**
- 2** Then click on the Windows Locked button in the center display to turn it ON. Then wait approx. one second and then turn it OFF. Then wait one more second and click again on the Windows Locked button to turn it ON. Finally, wait one second and then turn it OFF again. **See Picture 20.**
- 3** Finally, turn the UI WIFI interface back to ON in the center display of the car, and put back the Windows Locked button to the state it was prior to this sequence.

WIFI AP CONTROL

- 4 You can repeat the same sequence to switch the WIFI AP interface between ON or OFF.

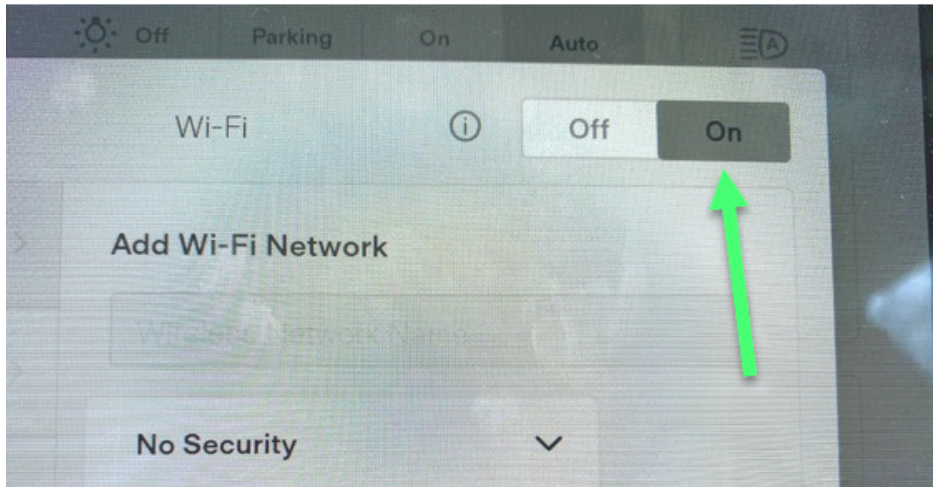


Figure 7

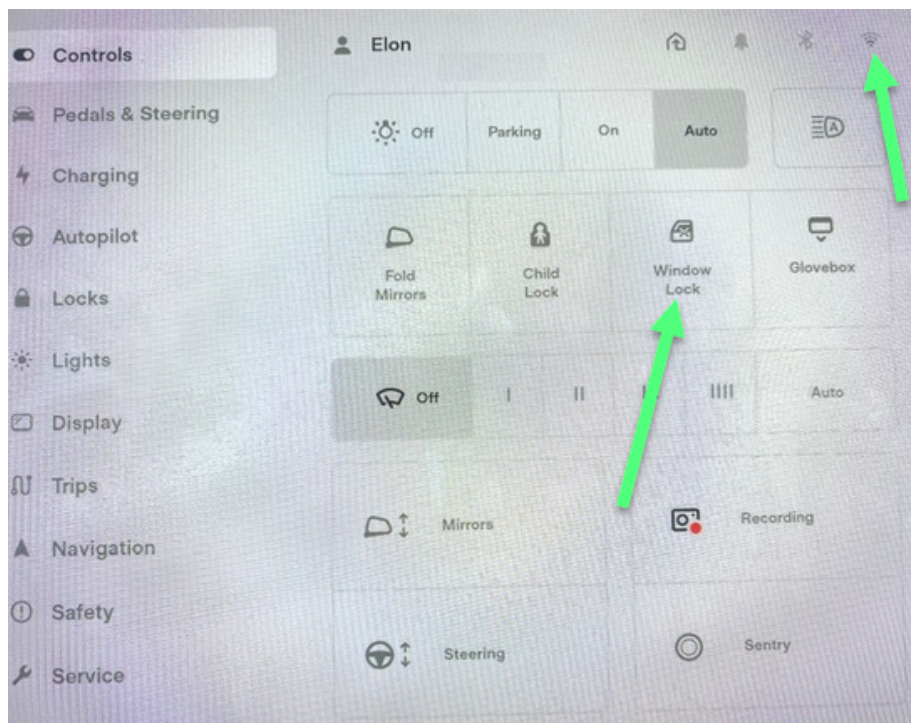


Figure 8

REGEN CONTROL

- This feature is used to control the total percentage of regen allowed by the battery.
- The feature can be activated while parked or driving

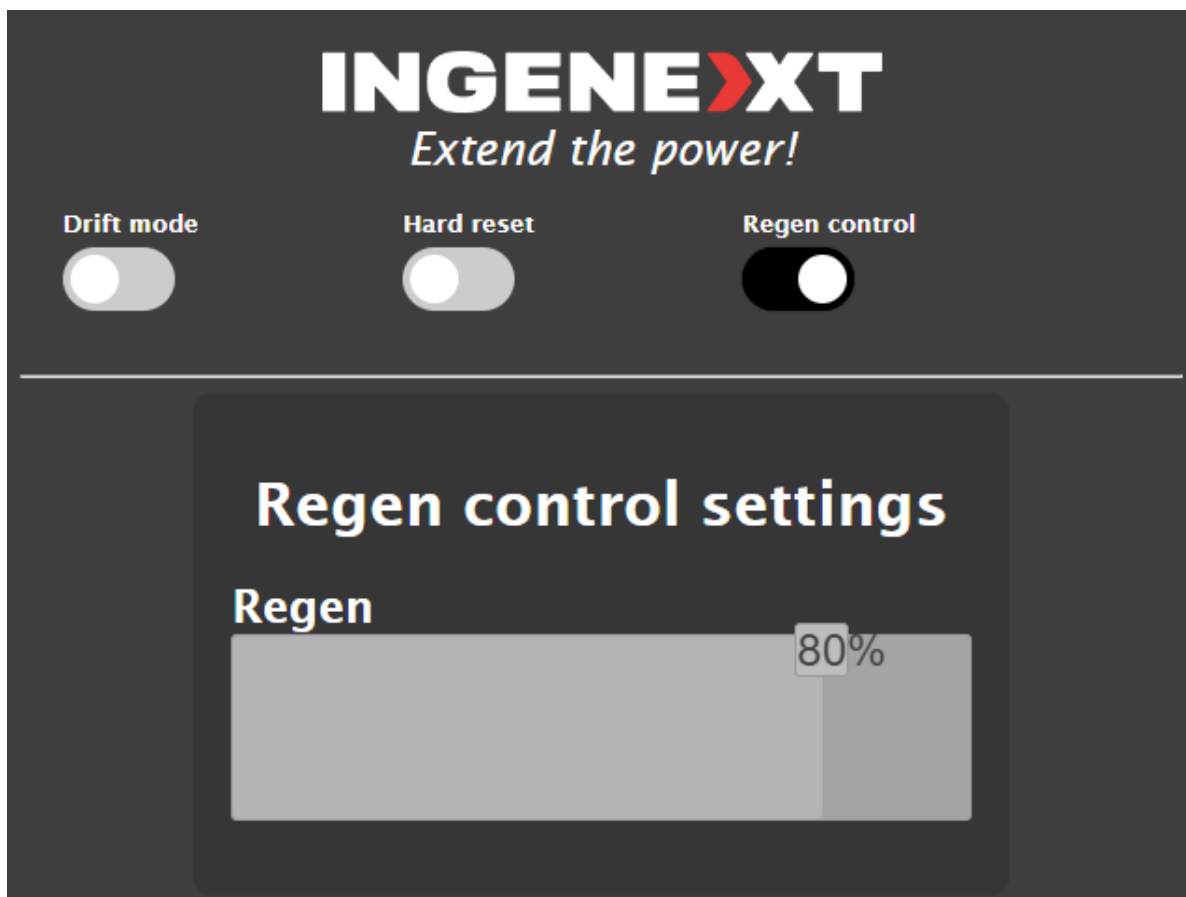


Figure 9

HARD RESET

- This feature resets the vehicle's systems. The feature will automatically turn off after the hard reset. You must be in park to activate it
- All those who own a 2021 and above must do a hard reset after installing the product.

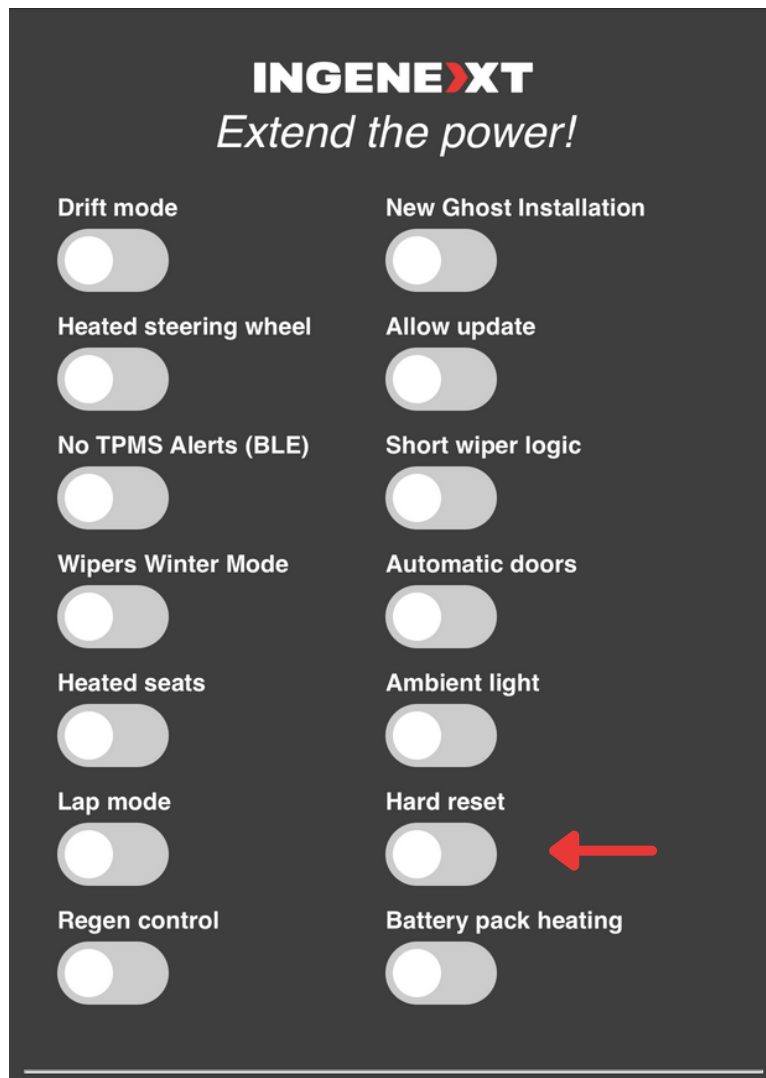


Figure 10

RESET WIFI AP PASSWORD

- 1** You should start this sequence with the center display in the Service Menu
- 2** While in Park, cycle every second between the WIPER SERVICE MODE ON and OFF Position
- 3** You should do this sequence (from ON to OFF) at least 4 times in order to reset the AP password to the default one : ingenext.

TESLA UPDATES

- 1** To do a Tesla update you need to turn off your car
- 2** Then, unplug the Boost LFP module from the harness and plug the second Bypass
- 3** Make the Tesla update from your car screen
- 4** Once the update is complete, turn off your car and unplug the Bypass and plug back the Boost LFP module

**YOU CAN'T DO ANY TESLA UPDATES
IF THE BOOST LFP MODULE IS
PLUGGED TO THE HARNESS**

Any reproduction or use in any form in whole or in part of this document is strictly prohibited without the authorization of the authors.

